

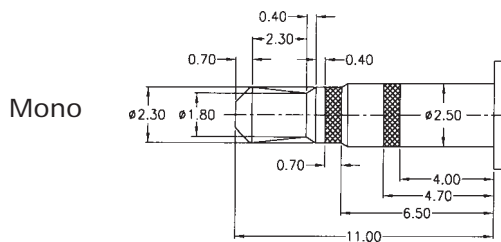


General Specifications for AJ Series

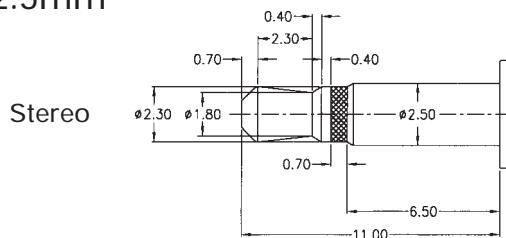
| | |
|------------------------|-----------------------------|
| Insulation Resistance: | 100MΩ min. at 500 V DC |
| Withstanding Voltage: | 500 V AC for 1 minute |
| Contact Resistance: | 50mΩ max. (initial) |
| Soldering Heat Test: | 260 ±5°C for 5±1 seconds |
| Insertion Force: | 0.3 to 2.0 Kg |
| Extraction Force: | 0.3 to 2.0 Kg |
| Mating Cycles: | 5,000 times |
| Soldering Temp.: | 220°C / 60 sec., 250°C peak |

Mating Plugs for AJ Series (SMT Earphone Jacks)

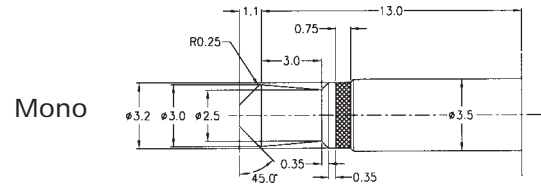
Ø 2.5mm



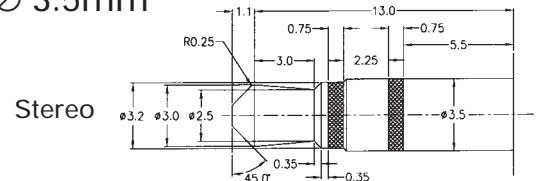
Ø 2.5mm



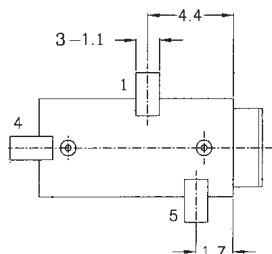
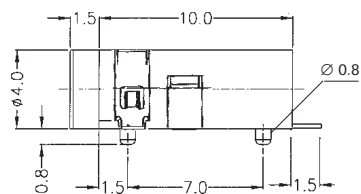
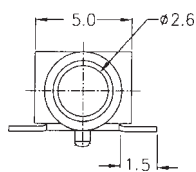
Ø 3.5mm



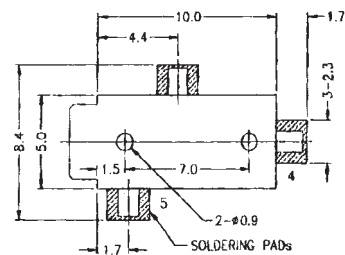
Ø 3.5mm



AJ406-3-SMT

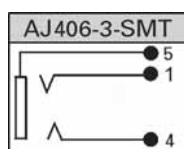


PCB-Layout (Bottom View)

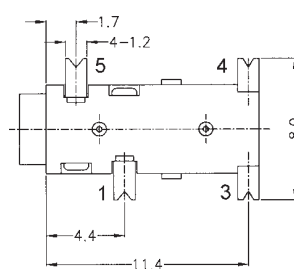
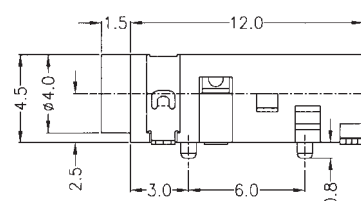
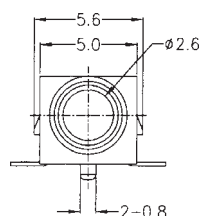


Pad Layout (mounting side)

Part No. (Details)



AJ403-*-SMT

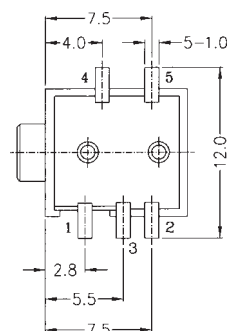
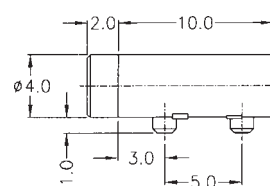
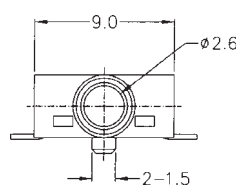


PCB-Layer (Bottom View)

Part No. (Details)

| AJ403-4T-SMT | AJ403-3-SMT |
|--------------|-------------|
| | |

AJ404-*-SMT

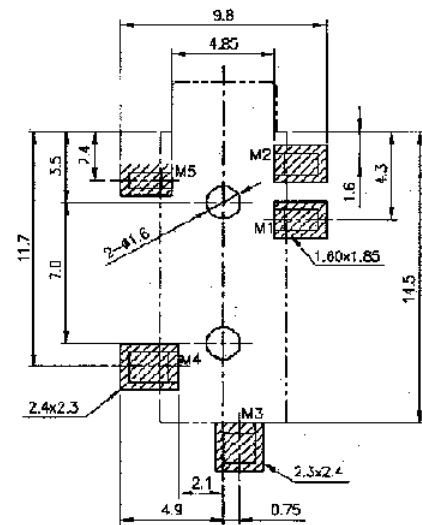
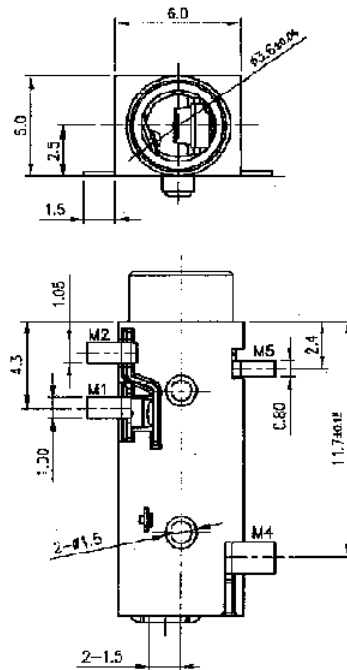
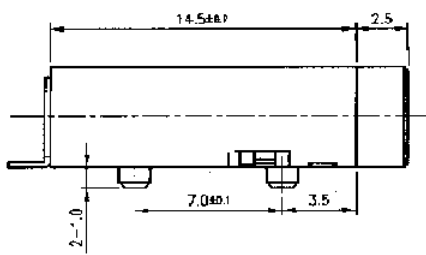


PCB-Layer (Bottom View)

Part No. (Details)

| AJ404-5-SMT | AJ404-3M-SMT |
|-------------|--------------|
| | |

AJ330-*-SMT

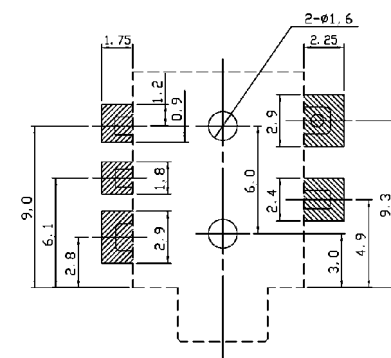
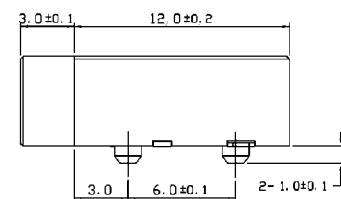
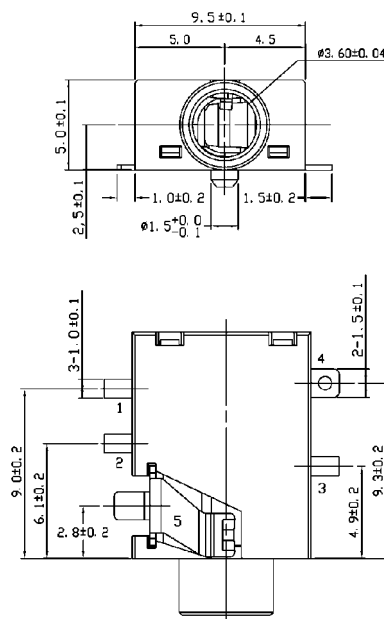
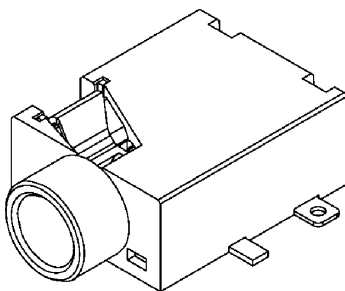


PCB-Layout (Top View)

Part No. (Details)

| AJ330-4T-SMT | AJ330-3-SMT |
|--------------|-------------|
| | |

AJ332-*-SMT



PCB-Layout (Mounting Side)

Part No. (Details)

| AJ332-5-SMT | AJ332-3M-SMT |
|-------------|--------------|
| | |