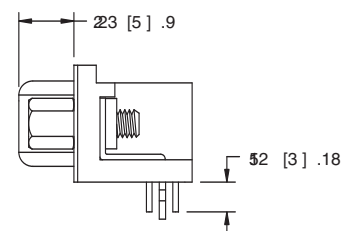
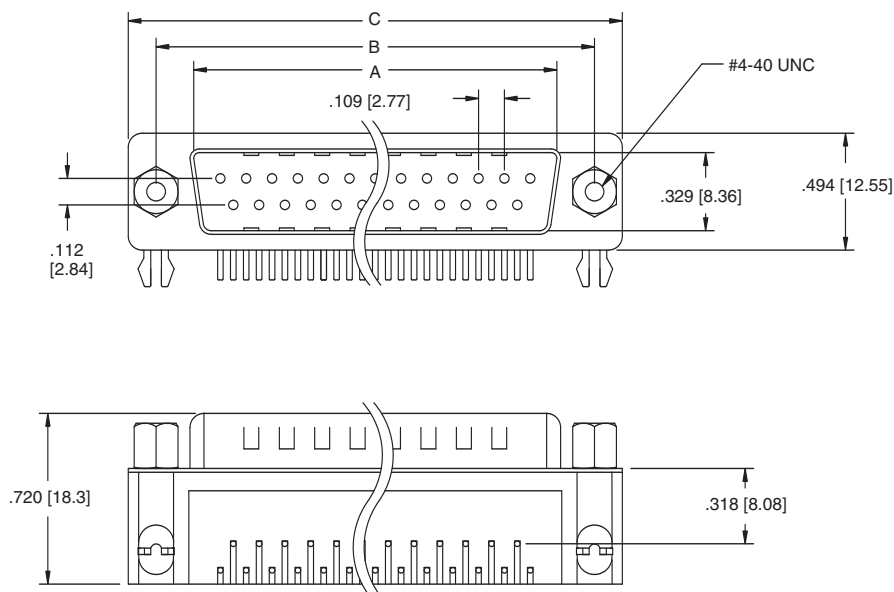
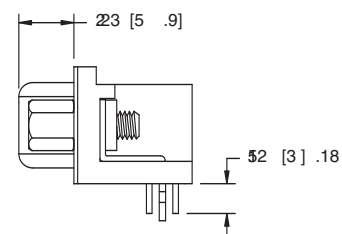
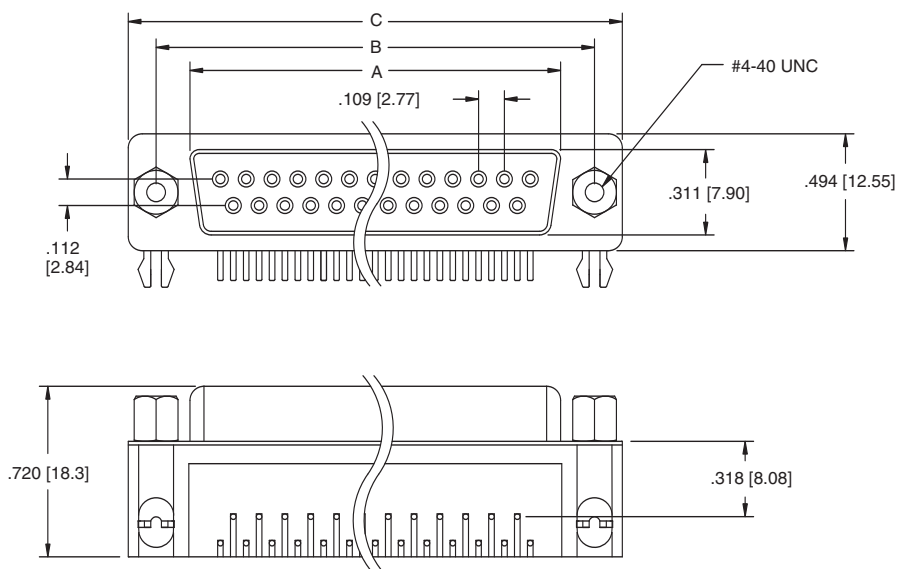


#### PLUG



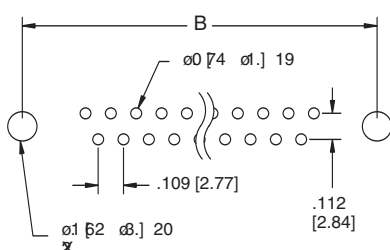
DB25-PL-25

#### SOCKET

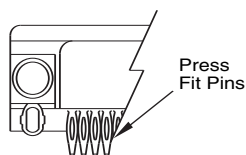


DB25-SL-24

Unit: Inch [mm]



Recommended PCB Layout



Press Fit Option

Pos.	PLUG	SOCKET	DIMENSIONS	
	A	A	B	C
9	.666 [16.92]	.643 [16.33]	.984 [24.99]	1.213 [30.81]
15	.994 [25.25]	.971 [24.66]	1.312 [33.32]	1.541 [39.14]
25	1.534 [38.96]	1.511 [38.38]	1.852 [47.04]	2.088 [53.04]
37	2.182 [55.43]	2.159 [54.84]	2.500 [63.50]	2.729 [69.32]

### MATING FACE & PCB MOUNTING OPTIONS

<p><b>OPTION 13</b></p>	<p><b>OPTION 14</b></p>	<p><b>OPTION 15</b></p>
<p><b>OPTION 16</b></p>	<p><b>OPTION 23</b></p> <p><i>* Standard Stocked Item</i></p>	<p><b>OPTION 23-R OPTION 27</b></p>
<p><b>OPTION 24</b></p> <p><i>* Standard Stocked Item</i></p>	<p><b>OPTION 24-F</b></p>	<p><b>OPTION 25</b></p> <p><i>* Standard Stocked Item</i></p>
<p><b>OPTION 26</b></p>	<p><b>OPTION 33</b></p>	<p><b>OPTION 34</b></p>
<p><b>OPTION 35</b></p>	<p><b>OPTION 36</b></p>	<p><b>OPTION 43</b></p>
<p><b>OPTION 44</b></p>	<p><b>OPTION 45</b></p>	<p><b>OPTION 46</b></p>