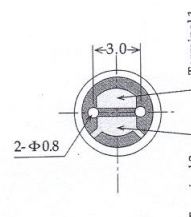
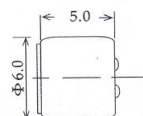
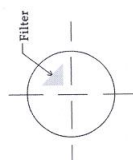
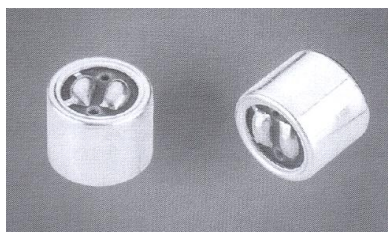




## EM6035N

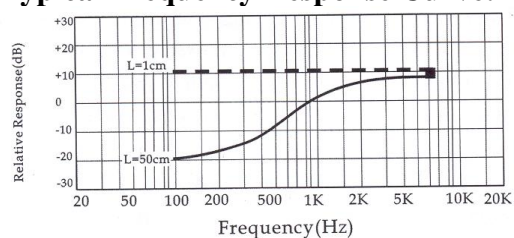
*Noise Canceling Electret Condenser Microphone*

## EM6050N

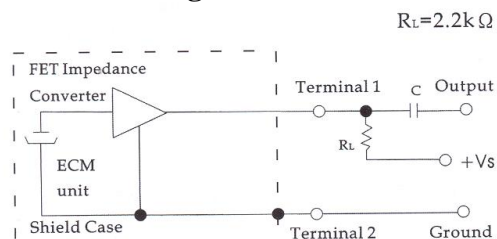


Sensitivity	0dB = 1V/Pa. 1KHz
Directivity	Omnidirectional
Impedance	Low Impedance
Current Consumption	Max. 0.5mA
Standard Operation Voltage	2.0V
Sensitivity Reduction	Within -3dB at 1.5V
S/N Ratio	More than 58dB
Sensitivity Range	<b>-51 ± 4dB, -54 ± 4dB</b>

### Typical Frequency Response Curve:



### Schematic Diagram:



Unit: mm