



FE-0720A SERIES

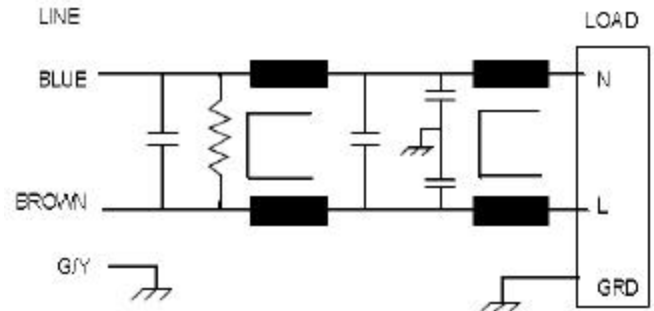
The FE-720A series filters are the same as our standard 720A series filters except that the connector is a standard IEC outlet.

The connector is located on the output of the filter and is intended to provide filtered power for accessories etc.

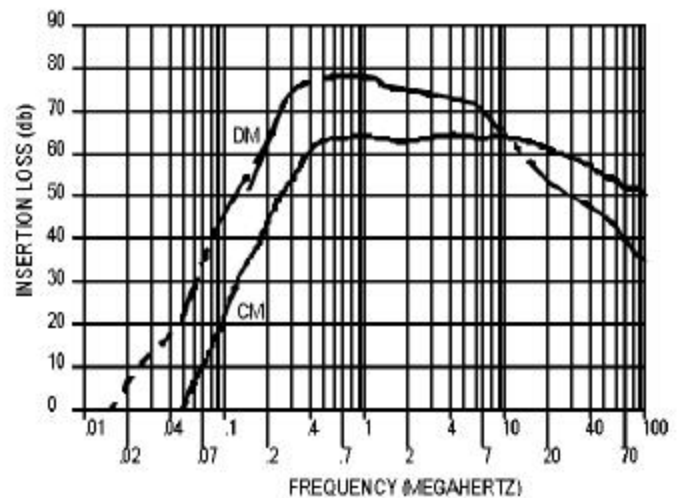
This filter will provide excellent common mode and differential filtering.

This filter carries the UL, CSA, and TUV safety approvals

FILTERED OUTLET



Operating Voltage: 115/250 V~
 Operating Current: 6, 8, 10 amps
 Operating Freq: 50 / 60 Hz
 Operating Temp: -20 / 40o C
 Diel. Withstand (L-C): 1500 V~ (1.0 min)
 Diel. Withstand (L-L): 1500 Vdc (1.0 min)
 Leakage Current: 1.0 ma @ 250 V, 60 Hz
 Max. Residual volt: 32 volts after 1.0 sec.
 Insertion Loss: Curve shown is for 10 A



Order Part number:
 FE-0720A-6 for 6 amps
 FE-0720A-8 for 8 amps
 FE-0720A-10 for 10 amps

