

QUAD DIFFERENTIAL PECL RECEIVERS

FEATURES

- Low-Voltage Functional Replacements for the Agere BRF1A, BRF2A, BRS2A, and BRS2B
- Pin-Equivalent to General Trade 26LS32 Devices
- High-Input Impedance Approximately 8 k Ω
- 3.5-ns Maximum Propagation Delay
- TB3R1 Provides 50-mV Hysteresis
- TB3R2 With -125-mV Threshold Offset for Preferred State Output
- -0.5-V to 5.2-V Common Mode Range
- Single 3.3 V $\pm 10\%$ Supply
- Slew Rate Limited (0.5 ns min 80% to 20%)
- TB3R2 Output Defaults to Logic 1 When Inputs Left Open or Shorted to V_{CC} or GND
- ESD Protection HBM > 3 kV, CDM > 2 kV
- Operating Temperature Range: -40°C to 85°C
- Available SOIC (D) Package

APPLICATIONS

- Digital Data or Clock Transmission Over Balanced Lines

DESCRIPTION

These quad differential receivers accept digital data over balanced transmission lines. They translate differential input logic levels to TTL output logic levels.

The TB3R1 is a pin- and function-compatible replacement for the Agere Systems BRF1A and BRF2A; it includes 3-kV HBM and 2-kV CDM ESD protection.

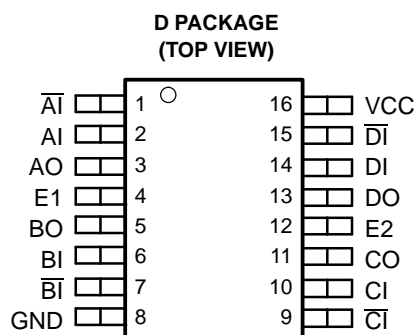
The TB3R2 is a pin- and function-compatible replacement for the Agere Systems BRS2A and BRS2B and incorporates a -125-mV receiver input offset, preferred state output, 3-kV HBM and 2-kV CDM ESD protection. The TB3R2 preferred state feature places the output in the high state when the inputs are open, shorted to ground, or shorted to the power supply.

The power-down loading characteristics of the receiver input circuit are approximately 8 k Ω relative to the power supplies; hence they do not load the transmission line when the circuit is powered down.

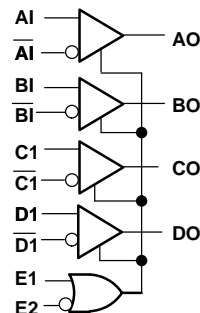
The package for these differential line receivers is the 16-pin SOIC (D) package.

The enable inputs of this device include internal pullup resistors of approximately 40 k Ω that are connected to V_{CC} to ensure a logical high level input if the inputs are open circuited.

PIN ASSIGNMENTS



FUNCTIONAL BLOCK DIAGRAM



ENABLE TRUTH TABLE

E1	E2	CONDITION
0	0	Active
1	0	Active
0	1	Disabled
1	1	Active



Please be aware that an important notice concerning availability, standard warranty, and use in critical applications of Texas Instruments semiconductor products and disclaimers thereto appears at the end of this data sheet.



These devices have limited built-in ESD protection. The leads should be shorted together or the device placed in conductive foam during storage or handling to prevent electrostatic damage to the MOS gates.

ORDERING INFORMATION

PART NUMBER	PART MARKING	Package	LEAD FINISH	STATUS
TB3R1D	TB3R1	SOIC	NiPdAu	Production
TB3R2D	TB3R2	SOIC	NiPdAu	Production
TB3R1LD	TB3R1	SOIC	SnPb	Production
TB3R2LD	TB3R2	SOIC	SnPb	Production

POWER DISSIPATION RATINGS

PACKAGE	CIRCUIT BOARD MODEL	POWER RATING $T_A \leq 25^\circ\text{C}$	THERMAL RESISTANCE, JUNCTION-TO-AMBIENT WITH NO AIR FLOW	DERATING FAC- TOR ⁽¹⁾ $T_A \geq 25^\circ\text{C}$	POWER RATING $T_A = 85^\circ\text{C}$
D	Low-K ⁽¹⁾	763 mW	131.1 $^\circ\text{C/W}$	7.6 mW/ $^\circ\text{C}$	305 mW
	High-K ⁽²⁾	1190 mW	84.1 $^\circ\text{C/W}$	11.9 mW/ $^\circ\text{C}$	475 mW
DW	Low-K ⁽¹⁾	831 mW	120.3 $^\circ\text{C/W}$	8.3 mW/ $^\circ\text{C}$	332 mW
	High-K ⁽²⁾	1240 mW	80.8 $^\circ\text{C/W}$	12.4 mW/ $^\circ\text{C}$	494 mW

(1) In accordance with the low-K thermal metric definitions of EIA/JESD51-3.

(2) In accordance with the high-K thermal metric definitions of EIA/JESD51-7.

THERMAL CHARACTERISTICS

PARAMETER		PACKAGE	VALUE	UNIT
θ_{JB}	Junction-to-Board Thermal Resistance	D	47.5	$^\circ\text{C/W}$
		DW	53.7	$^\circ\text{C/W}$
θ_{JC}	Junction-to-Case Thermal Resistance	D	44.2	$^\circ\text{C/W}$
		DW	47.1	$^\circ\text{C/W}$

ABSOLUTE MAXIMUM RATINGS

over operating free-air temperature range unless otherwise noted⁽¹⁾

			UNIT
Supply voltage, V_{CC}			0 V to 6 V
Magnitude of differential bus (input) voltage, $ V_{AI} - V_I $, $ V_{BI} - V_I $, $ V_{CI} - V_I $, $ V_{DI} - V_I $			6.5 V
ESD	Human Body Model ⁽²⁾	All pins	± 3 kV
	Charged-Device Model ⁽³⁾	All pins	± 2 kV
Continuous power dissipation			See Dissipation Rating Table
Storage temperature, T_{stg}			-65°C to 150°C

(1) Stresses beyond those listed under „absolute maximum ratings“ may cause permanent damage to the device. These are stress ratings only, and functional operation of the device at these or any other conditions beyond those indicated under „recommended operating conditions“ is not implied. Exposure to absolute-maximum-rated conditions for extended periods may affect device reliability.

(2) Tested in accordance with JEDEC Standard 22, Test Method A114-A.

(3) Tested in accordance with JEDEC Standard 22, Test Method C101.

RECOMMENDED OPERATING CONDITIONS

	MIN	Nom	MAX	UNIT
Supply voltage, V_{CC}	3	3.3	3.6	V
Bus pin input voltage, V_{AI} , V , V_{BI} , V , V_{CI} , V , V_{DI} , V	-0.6 ⁽¹⁾		5.3	V
Magnitude of differential input voltage, $ V_{AI} - V $, $ V_{BI} - V $, $ V_{CI} - V $, $ V_{DI} - V $	0.1		5	V
Operating free-air temperature, T_A	-40		85	°C

- (1) The algebraic convention, in which the least positive (most negative) limit is designated as minimum is used in this data sheet, unless otherwise noted.

DEVICE ELECTRICAL CHARACTERISTICS

over operating free-air temperature range unless otherwise noted

PARAMETER	TEST CONDITIONS	MIN	TYP	MAX	UNIT
I_{CC} Supply current ⁽¹⁾	Outputs disabled			34	mA
	Outputs enabled			32	mA

- (1) Current is dc power draw as measured through GND pin and does not include power delivered to load.

ELECTRICAL CHARACTERISTICS

over operating free-air temperature range unless otherwise noted

parameter	test conditions	min	typ	max	unit
V_{OL} Output low voltage	$V_{CC} = 3\text{ V}$, $I_{OL} = 8\text{ mA}$			0.4	V
V_{OH} Output high voltage	$V_{CC} = 3\text{ V}$, $I_{OH} = -400\text{ }\mu\text{A}$	2.4			V
V_{IL} Low level enable input voltage ⁽¹⁾	$V_{CC} = 3.6\text{ V}$			0.8	V
V_{IH} High level enable input voltage ⁽¹⁾	$V_{CC} = 3.6\text{ V}$	2			V
V_{IK} Enable input clamp voltage	$V_{CC} = 3\text{ V}$, $I_I = -5\text{ mA}$			-1 ⁽²⁾	V
V_{TH+} Positive-going differential input threshold voltage ⁽¹⁾ , ($V_{XI} - V$)	$x = A, B, C, \text{ or } D$	TB3R1		100	mV
		TB3R2 ⁽³⁾		-50	mV
V_{TH-} Negative-going differential input threshold voltage ⁽¹⁾ , ($V_{XI} - V$)	$x = A, B, C, \text{ or } D$	TB3R1		-100 ⁽²⁾	mV
		TB3R2 ⁽³⁾		-200 ⁽²⁾	mV
V_{HYST} Differential input threshold voltage hysteresis, ($V_{TH+} - V_{TH-}$)	TB3R1		50		mV
I_{OZL} Output off-state current, (High-Z)	$V_{CC} = 3.6\text{ V}$	$V_O = 0.4\text{ V}$		-20 ⁽²⁾	μA
		$V_O = 2.4\text{ V}$		20	μA
I_{OS} Output short circuit current ⁽⁴⁾	$V_{CC} = 3.6\text{ V}$			-100 ⁽²⁾	mA
I_{IL} Enable input low current	$V_{CC} = 3.6\text{ V}$, $V_{IN} = 0.4\text{ V}$			-400 ⁽²⁾	μA
I_{IH} Enable input high current	$V_{CC} = 3.6\text{ V}$	$V_{IN} = 2.7\text{ V}$		20	μA
		$V_{IN} = 3.6\text{ V}$		100	μA
I_{IL} Differential input low current	$V_{CC} = 3.6\text{ V}$, $V_{IN} = -1.2\text{ V}$			-2 ⁽²⁾	mA
I_{IH} Differential input high current	$V_{CC} = 3.6\text{ V}$, $V_{IN} = 5.3\text{ V}$			1	mA
R_O Output resistance			20		Ω

- (1) The input levels and difference voltage provide no noise immunity and should be tested only in a static, noise-free environment.
(2) This parameter is listed using a magnitude and polarity/direction convention, rather than an algebraic convention, to match the original Agere data sheet.
(3) Outputs of unused receivers assume a logic 1 level when the inputs are left open. (It is recommended that all unused positive inputs be tied to the positive power supply. No external series resistor is required.)
(4) Test must be performed one lead at a time to prevent damage to the device.

SWITCHING CHARACTERISTICS

over operating free-air temperature range unless otherwise noted

parameter		test conditions	min	typ	max	unit
t _{PLH}	Propagation delay time, low-to-high-level output	C _L = 0 pF ⁽¹⁾ , See Figure 2 and Figure 4	1.8	3.5		ns
t _{PHL}	Propagation delay time, high-to-low-level output		1.8	3.5		
t _{PLH}	Propagation delay time, low-to-high-level output	C _L = 15 pF, See Figure 2 and Figure 4	2.3	4		ns
t _{PHL}	Propagation delay time, high-to-low-level output		2.3	4		
t _{PHZ}	Output disable time, high-level-to-high-impedance output ⁽²⁾	C _L = 5 pF See Figure 3 and Figure 5	4.4	12		ns
t _{PLZ}	Output disable time, low-level-to-high-impedance output ⁽²⁾		3.3	12		ns
t _{skew1}	Pulse width distortion, t _{PHL} - t _{PLH}	C _L = 10 pF, See Figure 2 and Figure 4		0.7		ns
		C _L = 150 pF, See Figure 2 and Figure 4		4		ns
Δt _{skew1p-p}	Part-to-part output waveform skew ⁽³⁾	C _L = 10 pF, T _A = 75°C, See Figure 2 and Figure 4	0.8	1.4		ns
		C _L = 10 pF, T _A = -40°C to 85°C, See Figure 2 and Figure 4		1.5		ns
Δt _{skew}	Same part output waveform skew ⁽³⁾	C _L = 10 pF, See Figure 2 and Figure 4		0.3		ns
t _{PZH}	Output enable time, high-impedance-to-high-level output ⁽⁴⁾	C _L = 10 pF, See Figure 3 and Figure 4	6	12		ns
t _{PZL}	Output enable time, high-impedance-to-low-level output ⁽⁴⁾		4	12		ns
t _{TLH}	Rise time (20%-80%)	C _L = 10 pF, See Figure 2 and Figure 4	0.5	2		ns
t _{THL}	Fall time (80%-20%)		0.5	2		ns

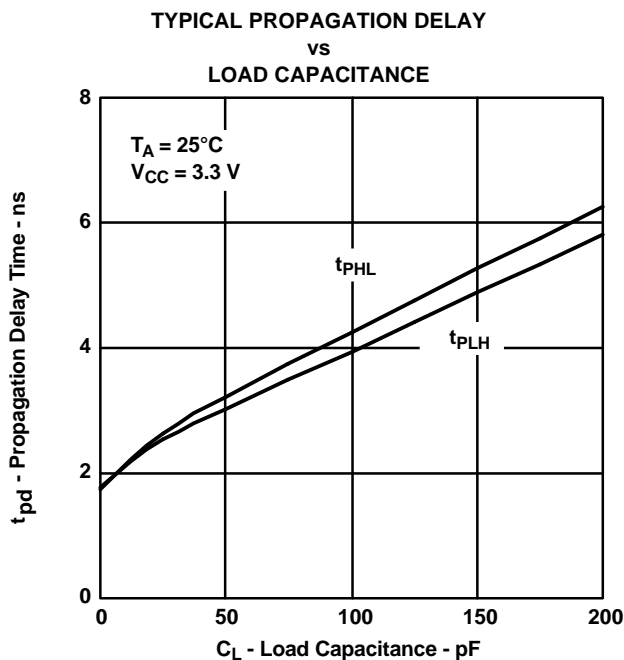
(1) The propagation delay values with a 0 pF load are based on design and simulation.

(2) See Table 1.

(3) Output waveform skews are when devices operate with the same supply voltage, same temperature, have the same packages and the same test circuits.

(4) See Table 1.

TYPICAL CHARACTERISTICS



- A. NOTE: This graph is included as an aid to the system designers. Total circuit delay varies with load capacitance. The total delay is the sum of the delay due to external capacitance and the intrinsic delay of the device. Intrinsic delay is listed in the table above as the 0 pF load condition. The incremental increase in delay between the 0 pF load condition and the actual total load capacitance represents the extrinsic, or external delay contributed by the load.

Figure 1. Typical Propagation Delay vs Load Capacitance at 25°C

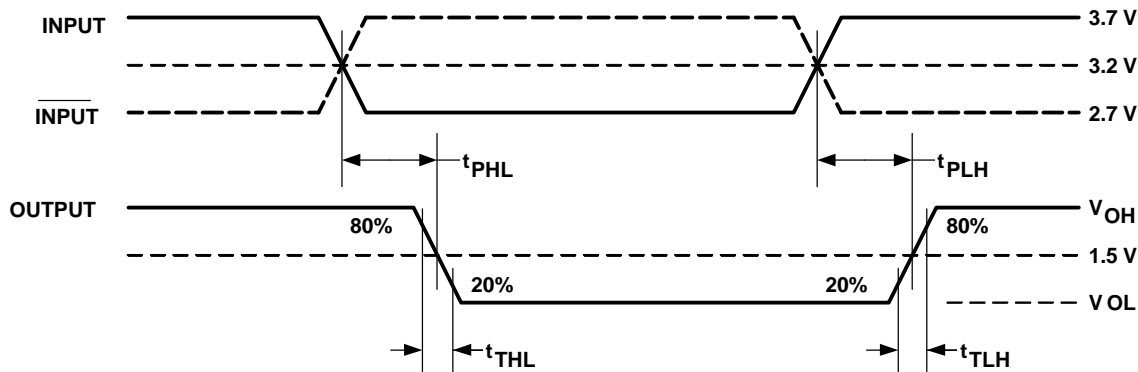
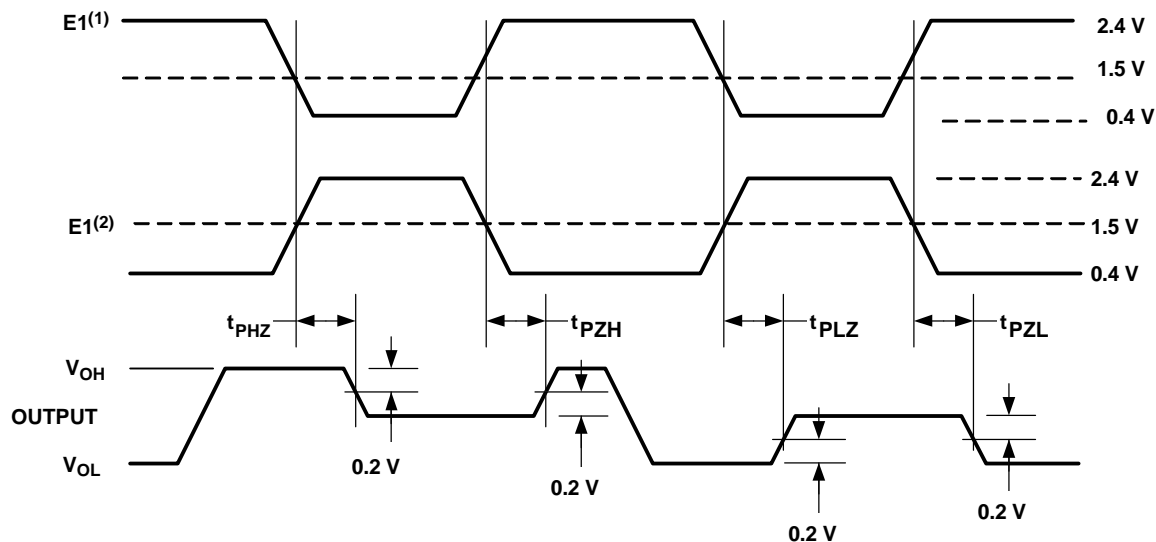


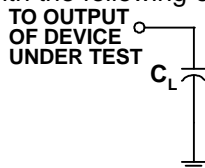
Figure 2. Receiver Propagation Delay Times

TYPICAL CHARACTERISTICS (continued)

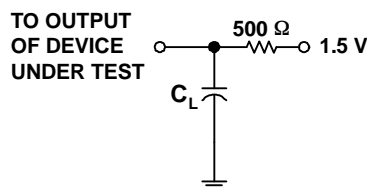
- A. E2 = 1 while E1 changes states.
- B. E1 = 0 while E2 changes states.

Figure 3. Receiver Enable and Disable Timing

Parametric values specified under the Electrical Characteristics and Timing Characteristics sections for the data transmission driver devices are measured with the following output load circuits.



C_L includes test-fixture and probe capacitance.

Figure 4. Receiver Propagation Delay Time and Enable Time (t_{PZH}, t_{PZL}) Test Circuit

C_L includes test-fixture and probe capacitance.

Figure 5. Receiver Disable Time (t_{PHZ}, t_{PLZ}) Test Circuit

TYPICAL CHARACTERISTICS (continued)

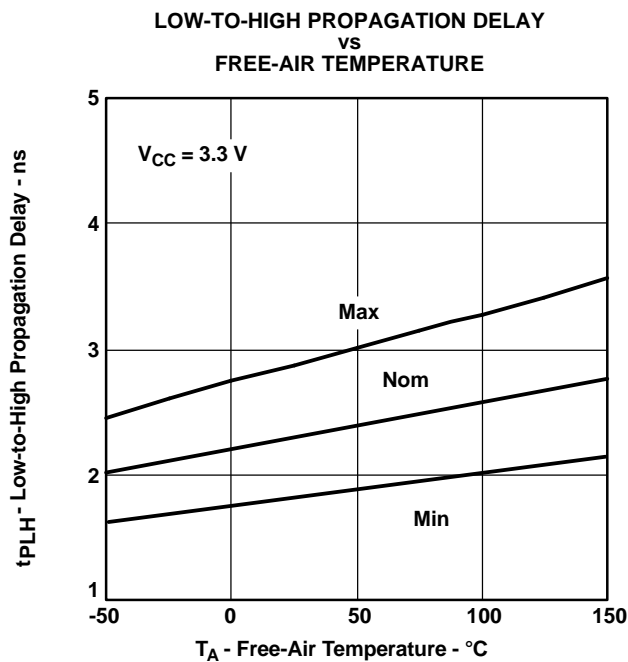


Figure 6.

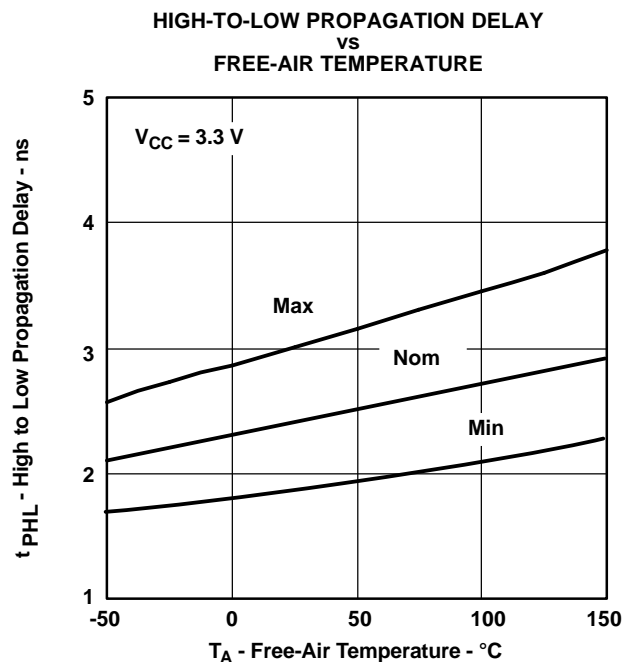


Figure 7.

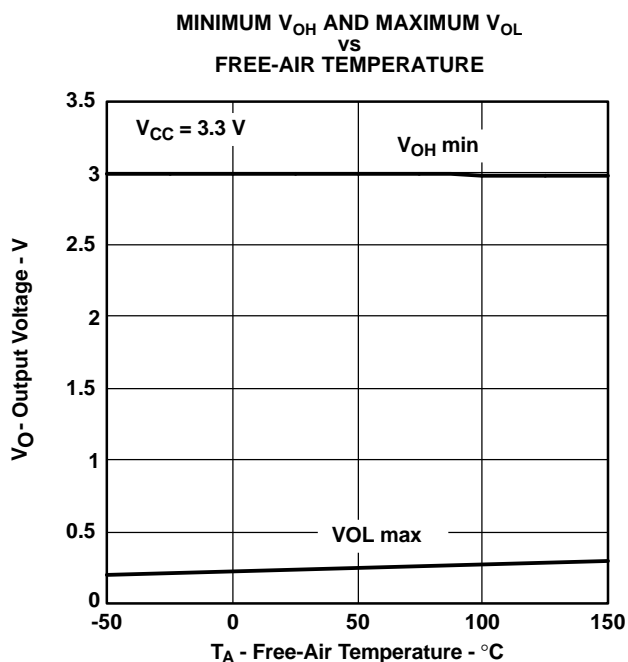


Figure 8.

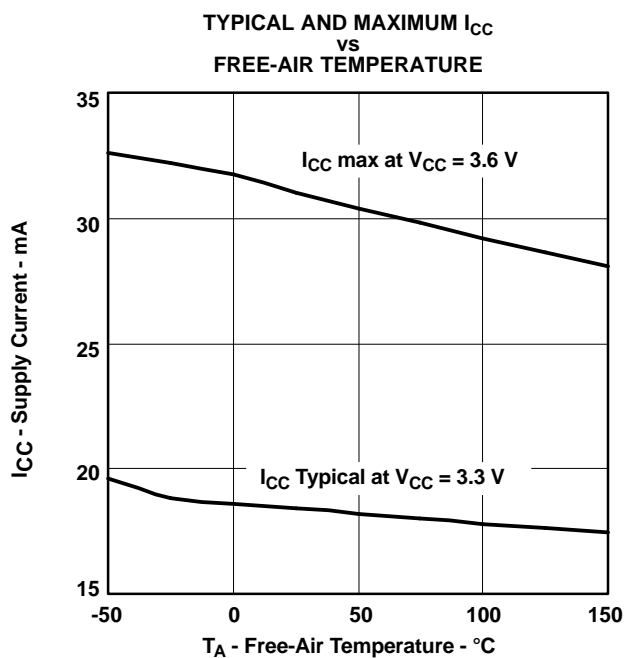


Figure 9.

APPLICATION INFORMATION

Power Dissipation

The power dissipation rating, often listed as the package dissipation rating, is a function of the ambient temperature, T_A , and the airflow around the device. This rating correlates with the device's maximum junction temperature, sometimes listed in the absolute maximum ratings tables. The maximum junction temperature accounts for the processes and materials used to fabricate and package the device, in addition to the desired life expectancy.

There are two common approaches to estimating the internal die junction temperature, T_J . In both of these methods, the device internal power dissipation P_D needs to be calculated. This is done by totaling the supply power(s) to arrive at the system power dissipation:

$$\sum (V_{Sn} \times I_{Sn}) \quad (1)$$

and then subtracting the total power dissipation of the external load(s):

$$\sum (V_{Ln} \times I_{Ln}) \quad (2)$$

The first T_J calculation uses the power dissipation and ambient temperature, along with one parameter: θ_{JA} , the junction-to-ambient thermal resistance, in degrees Celsius per watt.

The product of P_D and θ_{JA} is the junction temperature rise above the ambient temperature. Therefore:

$$T_J = T_A + (P_D \times \theta_{JA}) \quad (3)$$

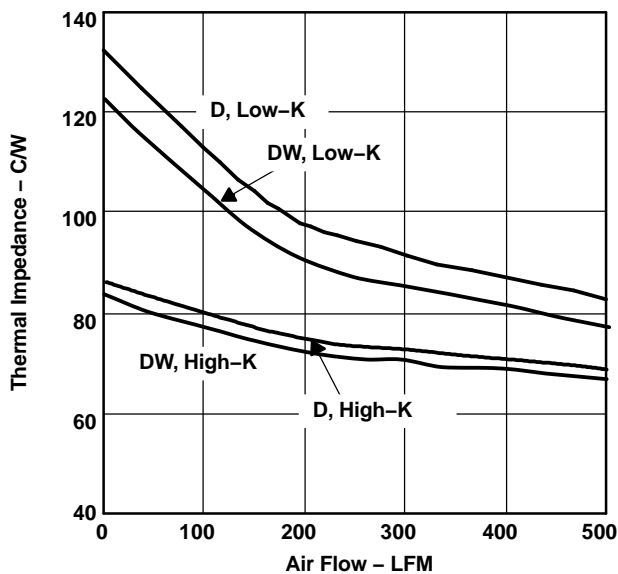


Figure 10. Thermal Impedance vs Air Flow

Note that θ_{JA} is highly dependent on the PCB on which the device is mounted, and on the airflow over the device and PCB. JEDEC/EIA has defined standardized test conditions for measuring θ_{JA} . Two commonly used conditions are the low-K and the high-K boards, covered by EIA/JESD51-3 and EIA/JESD51-7 respectively. Figure 10 shows the low-K and high-K values of θ_{JA} versus air flow for this device and its package options.

The standardized θ_{JA} values may not accurately represent the conditions under which the device is used. This can be due to adjacent devices acting as heat sources or heat sinks, to nonuniform airflow, or to the system PCB having significantly different thermal characteristics than the standardized test PCBs. The second method of system thermal analysis is more accurate. This calculation uses the power dissipation and ambient temperature, along with two device and two system-level parameters:

- θ_{JC} , the junction-to-case thermal resistance, in degrees Celsius per watt
- θ_{JB} , the junction-to-board thermal resistance, in degrees Celsius per watt
- θ_{CA} , the case-to-ambient thermal resistance, in degrees Celsius per watt
- θ_{BA} , the board-to-ambient thermal resistance, in degrees Celsius per watt.

In this analysis, there are two parallel paths, one through the case (package) to the ambient, and another through the device to the PCB to the ambient. The system-level junction-to-ambient thermal impedance, $\theta_{JA(S)}$, is the equivalent parallel impedance of the two parallel paths:

$$T_J = T_A + (P_D \times \theta_{JA(S)}) \quad (4)$$

where

$$\theta_{JA(S)} = \frac{[(\theta_{JC} + \theta_{CA}) \times (\theta_{JB} + \theta_{BA})]}{(\theta_{JC} + \theta_{CA} + \theta_{JB} + \theta_{BA})} \quad (5)$$

The device parameters θ_{JC} and θ_{JB} account for the internal structure of the device. The system-level parameters θ_{CA} and θ_{BA} take into account details of the PCB construction, adjacent electrical and mechanical components, and the environmental conditions including airflow. Finite element (FE), finite difference (FD), or computational fluid dynamics (CFD) programs can determine θ_{CA} and θ_{BA} . Details on using these programs are beyond the scope of this data sheet, but are available from the software manufacturers.

PACKAGING INFORMATION

Orderable Device	Status ⁽¹⁾	Package Type	Package Drawing	Pins	Package Qty	Eco Plan ⁽²⁾	Lead/Ball Finish	MSL Peak Temp ⁽³⁾
TB3R1D	ACTIVE	SOIC	D	16	40	Pb-Free (RoHS)	CU NIPDAU	Level-2-250C-1YEAR/ Level-1-220C-UNLIM
TB3R1DR	ACTIVE	SOIC	D	16	2500	Pb-Free (RoHS)	CU NIPDAU	Level-2-250C-1YEAR/ Level-1-220C-UNLIM
TB3R2D	ACTIVE	SOIC	D	16	40	Pb-Free (RoHS)	CU NIPDAU	Level-2-250C-1YEAR/ Level-1-220C-UNLIM
TB3R2DR	ACTIVE	SOIC	D	16	2500	Pb-Free (RoHS)	CU NIPDAU	Level-2-250C-1YEAR/ Level-1-220C-UNLIM

⁽¹⁾ The marketing status values are defined as follows:

ACTIVE: Product device recommended for new designs.

LIFEBUY: TI has announced that the device will be discontinued, and a lifetime-buy period is in effect.

NRND: Not recommended for new designs. Device is in production to support existing customers, but TI does not recommend using this part in a new design.

PREVIEW: Device has been announced but is not in production. Samples may or may not be available.

OBSOLETE: TI has discontinued the production of the device.

⁽²⁾ Eco Plan - May not be currently available - please check <http://www.ti.com/productcontent> for the latest availability information and additional product content details.

None: Not yet available Lead (Pb-Free).

Pb-Free (RoHS): TI's terms "Lead-Free" or "Pb-Free" mean semiconductor products that are compatible with the current RoHS requirements for all 6 substances, including the requirement that lead not exceed 0.1% by weight in homogeneous materials. Where designed to be soldered at high temperatures, TI Pb-Free products are suitable for use in specified lead-free processes.

Green (RoHS & no Sb/Br): TI defines "Green" to mean "Pb-Free" and in addition, uses package materials that do not contain halogens, including bromine (Br) or antimony (Sb) above 0.1% of total product weight.

⁽³⁾ MSL, Peak Temp. -- The Moisture Sensitivity Level rating according to the JEDEC industry standard classifications, and peak solder temperature.

Important Information and Disclaimer: The information provided on this page represents TI's knowledge and belief as of the date that it is provided. TI bases its knowledge and belief on information provided by third parties, and makes no representation or warranty as to the accuracy of such information. Efforts are underway to better integrate information from third parties. TI has taken and continues to take reasonable steps to provide representative and accurate information but may not have conducted destructive testing or chemical analysis on incoming materials and chemicals. TI and TI suppliers consider certain information to be proprietary, and thus CAS numbers and other limited information may not be available for release.

In no event shall TI's liability arising out of such information exceed the total purchase price of the TI part(s) at issue in this document sold by TI to Customer on an annual basis.

D (R-PDSO-G16)

PLASTIC SMALL-OUTLINE PACKAGE



- NOTES:
- All linear dimensions are in inches (millimeters).
 - This drawing is subject to change without notice.
 - Body dimensions do not include mold flash or protrusion not to exceed 0.006 (0,15).
 - Falls within JEDEC MS-012 variation AC.

IMPORTANT NOTICE

Texas Instruments Incorporated and its subsidiaries (TI) reserve the right to make corrections, modifications, enhancements, improvements, and other changes to its products and services at any time and to discontinue any product or service without notice. Customers should obtain the latest relevant information before placing orders and should verify that such information is current and complete. All products are sold subject to TI's terms and conditions of sale supplied at the time of order acknowledgment.

TI warrants performance of its hardware products to the specifications applicable at the time of sale in accordance with TI's standard warranty. Testing and other quality control techniques are used to the extent TI deems necessary to support this warranty. Except where mandated by government requirements, testing of all parameters of each product is not necessarily performed.

TI assumes no liability for applications assistance or customer product design. Customers are responsible for their products and applications using TI components. To minimize the risks associated with customer products and applications, customers should provide adequate design and operating safeguards.

TI does not warrant or represent that any license, either express or implied, is granted under any TI patent right, copyright, mask work right, or other TI intellectual property right relating to any combination, machine, or process in which TI products or services are used. Information published by TI regarding third-party products or services does not constitute a license from TI to use such products or services or a warranty or endorsement thereof. Use of such information may require a license from a third party under the patents or other intellectual property of the third party, or a license from TI under the patents or other intellectual property of TI.

Reproduction of information in TI data books or data sheets is permissible only if reproduction is without alteration and is accompanied by all associated warranties, conditions, limitations, and notices. Reproduction of this information with alteration is an unfair and deceptive business practice. TI is not responsible or liable for such altered documentation.

Resale of TI products or services with statements different from or beyond the parameters stated by TI for that product or service voids all express and any implied warranties for the associated TI product or service and is an unfair and deceptive business practice. TI is not responsible or liable for any such statements.

Following are URLs where you can obtain information on other Texas Instruments products and application solutions:

Products		Applications	
Amplifiers	amplifier.ti.com	Audio	www.ti.com/audio
Data Converters	dataconverter.ti.com	Automotive	www.ti.com/automotive
DSP	dsp.ti.com	Broadband	www.ti.com/broadband
Interface	interface.ti.com	Digital Control	www.ti.com/digitalcontrol
Logic	logic.ti.com	Military	www.ti.com/military
Power Mgmt	power.ti.com	Optical Networking	www.ti.com/opticalnetwork
Microcontrollers	microcontroller.ti.com	Security	www.ti.com/security
		Telephony	www.ti.com/telephony
		Video & Imaging	www.ti.com/video
		Wireless	www.ti.com/wireless

Mailing Address: Texas Instruments
Post Office Box 655303 Dallas, Texas 75265

Copyright © 2005, Texas Instruments Incorporated