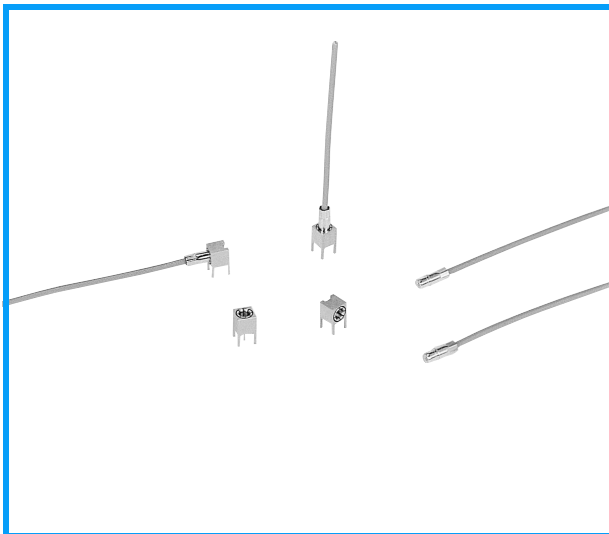


## Miniature, Low-profile Coaxial Connectors



- Y90 series are super mini-size type low profile coaxial cable connectors produced corresponding to minimization of communication equipment. (height from P.C.B is 4.4mm)
- High frequency connectors to be used up to 1GHz.

Note:

- Y90 series is intermateable with Y90A series.

## SPECIFICATION

Characteristic Impedance	50 $\Omega$
Dielectric withstanding voltage	1500V AC (rms) for 1 minute
Insulation resistance	1000M $\Omega$ min. at 500V DC
Contact resistance	10m $\Omega$ max.
VSWR	1.2max. at DC~1GHz

Specifications depends on each connector although these are basic specifications.

## MATERIAL/FINISH

Shell (male)	Copper alloy/Gold plating
Shell (female)	Copper alloy/Gold plating
Contact (male)	Copper alloy/Gold plating
Contact (female)	Copper alloy/Gold plating
Insulators	PTFE

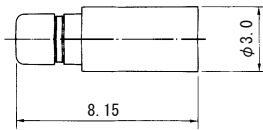
Y90A-LR-PC-1 ... PBT/black, Y90A-LR-SMT-A ... LCP/black

Please ask us for the cable assemblies to assure its performance.

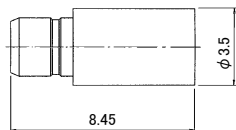
# Y90 Series

Unit : mm

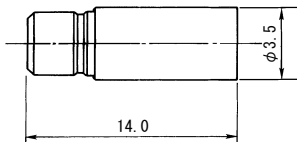
## ■ Plug



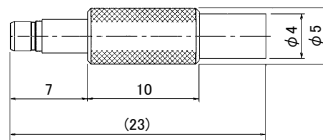
P/N	Applicable Cable	Hand Crimp Tool P/N
Y90-SP-A12B0320	A12B0098	CR-H-1151
	A12B0320	



P/N	Applicable Cable	Hand Crimp Tool P/N
Y90-SP-0.8C6V-CR	0.8C-6V	CR-H-13510

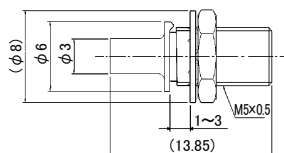


P/N	Applicable Cable	Hand Crimp Tool P/N
Y90-SP-0.8DV-CR	0.8D-QEV	CR-H-13510
	HR-0.8D-QEV · CW	



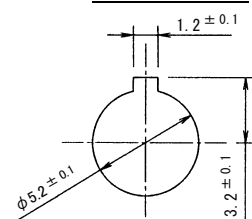
P/N	Applicable Cable	Hand Crimp Tool P/N
Y90-SP-1.5	1.5D-QEV	CR-H-1101
	1.5D-2V	

## ■ Bulkhead Jack



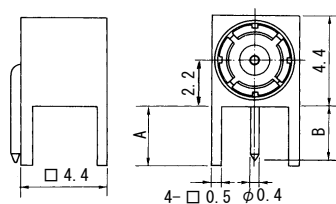
P/N	Applicable Cable	Hand Crimp Tool P/N
Y90-BJ-A12B0320-CR	A12B0098	CR-H-1151
	A12B0320	

### Mounting Hole



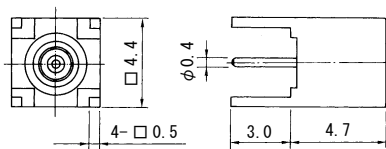
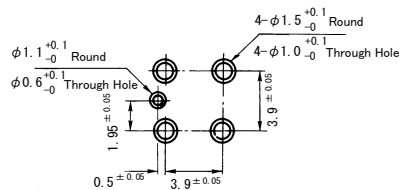
Unit : mm

## ■ Receptacle



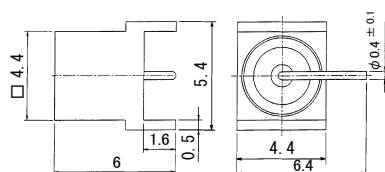
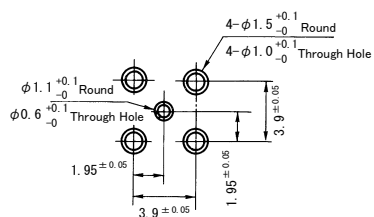
P/N	A	B
Y90-LR-PC	3.00	2.80
Y90-LR-PC-1	1.90	1.75
Y90-LR-PC-2	1.85	1.75
Y90-LR-PC-3	3.00	2.70

## PCB Mounting Dimensions



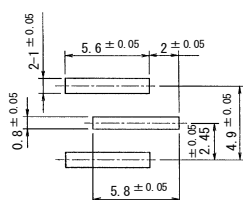
P/N
Y90-SR-PC

## PCB Mounting Dimensions



P/N
Y90-SR-PS

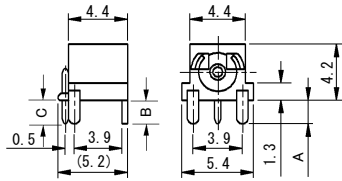
### PCB Mounting Dimensions



# Y90 Series

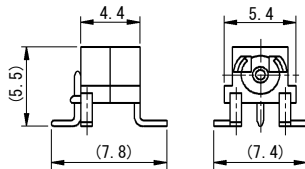
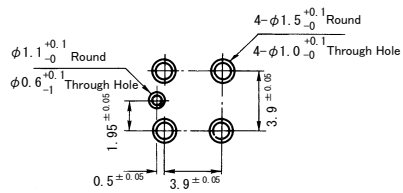
Unit : mm

## ■ Receptacle



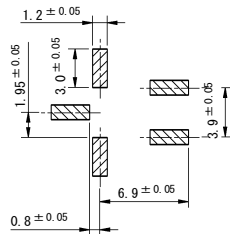
P/N	A	B	C
Y90A-LR-PC-1	1.90	1.90	1.75
Y90A-LR-PC-D1	2.50	2.80	2.70

### PCB Mounting Dimensions



P/N
Y90A-LR-SMT-A

### PCB Mounting Dimensions



## Pull-out Tool

Necessary tool for fitting-in and pulling-out of plug to/from receptacle connector, is available. (P/N:357J-12438)