

# TLP161G

Triac Drive

Programmable Controllers

AC-Output Module

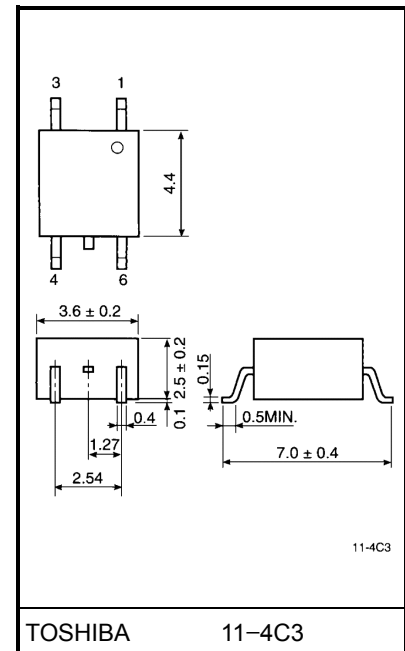
Solid State Relay

The TOSHIBA mini flat coupler TLP161G is a small outline coupler, suitable for surface mount assembly.

The TLP161G consists of a photo triac, optically coupled to a gallium arsenide infrared emitting diode.

- Zero-voltage crossing turn-on
- Peak off-state voltage: 400V(min.)
- Trigger LED current: 10mA(max.)
- On-state current: 70mA(max.)
- Isolation voltage: 2500Vrms(min.)
- UL recognized: UL1577, file no. E67349

Unit in mm



Weight: 0.09 g

## Trigger LED Current

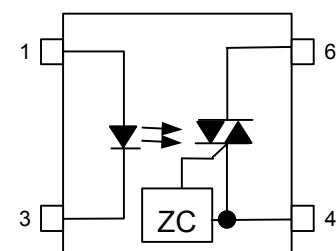
Classi- fication*	Trigger LED Current (mA)		Marking Of Classification
	V <sub>T</sub> =3V, T <sub>a</sub> =25°C		
	Min.	Max.	
(IFT5)	—	5	T5
(IFT7)	—	7	T5, T7
Standard	—	10	T5, T7, blank

\*Ex. (IFT5); TLP161G(IFT5)

(Note) Application type name for certification test, please use standard product type name, i.e.

TLP161G(IFT5); TLP161G

## Pin Configurations



1. ANODE
3. CATHODE
4. TERMINAL 1
6. TERMINAL 2

**Maximum Ratings (Ta = 25°C)**

Characteristic			Symbol	Rating	Unit
LED	Forward current		I <sub>F</sub>	50	mA
	Forward current derating (Ta ≥ 53°C)		ΔI <sub>F</sub> / °C	−0.7	mA / °C
	Peak forward current (100μs pulse, 100pps)		I <sub>FP</sub>	1	A
	Reverse voltage		V <sub>R</sub>	5	V
	Junction temperature		T <sub>j</sub>	125	°C
Detector	Off-state output terminal voltage		V <sub>DRM</sub>	400	V
	On-state RMS current	Ta=25°C	I <sub>T(RMS)</sub>	70	mA
		Ta=70°C		40	
	On-state current derating (Ta ≥ 25°C)		ΔI <sub>T</sub> / °C	−0.67	mA / °C
	Peak on-state current (100μs pulse, 120pps)		I <sub>TP</sub>	2	A
	Peak nonrepetitive surge current (PW=10ms, DC=10%)		I <sub>TSM</sub>	1.2	A
	Junction temperature		T <sub>j</sub>	115	°C
Storage temperature range			T <sub>stg</sub>	−55~125	°C
Operating temperature range			T <sub>opr</sub>	−40~100	°C
Lead soldering temperature (10s)			T <sub>sol</sub>	260	°C
Isolation voltage (AC, 1min., R.H.≤ 60%) (Note)			BV <sub>S</sub>	2500	Vrms

(Note) Device considered a two terminal device: Pins 1 and 3 shorted together and pins 4 and 6 shorted together.

**Recommended Operating Conditions**

Characteristic	Symbol	Min.	Typ.	Max.	Unit
Supply voltage	$V_{AC}$	—	—	120	Vac
Forward current	$I_F$	15	20	25	mA
Peak on-state current	$I_{TP}$	—	—	1	A
Operating temperature	$T_{opr}$	-25	—	85	°C

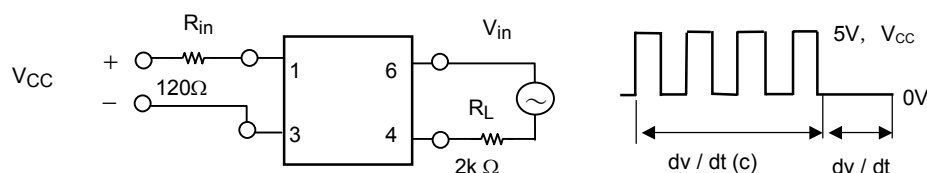
## Individual Electrical Characteristics (Ta = 25°C)

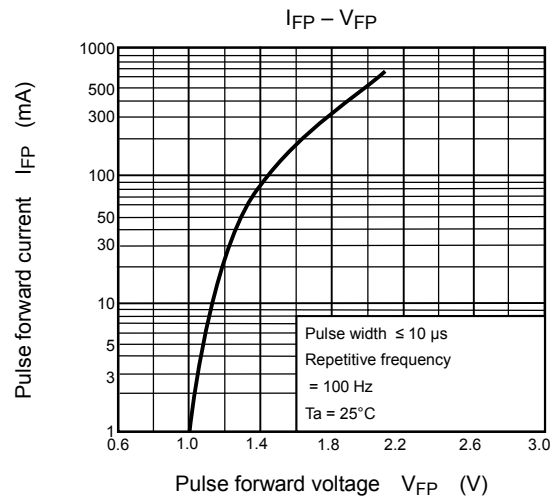
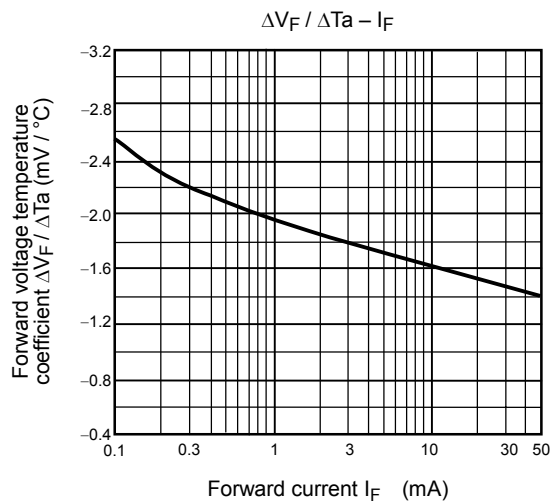
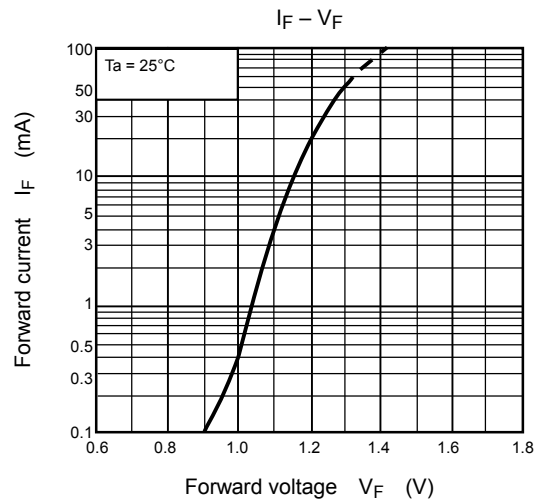
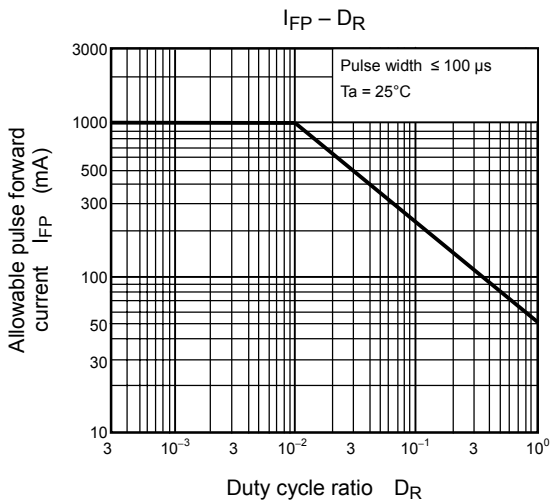
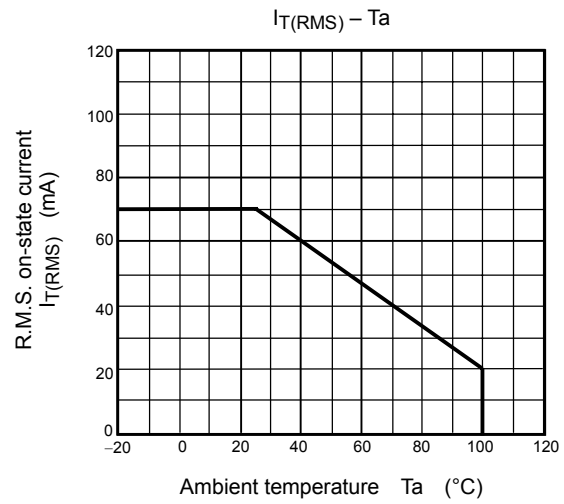
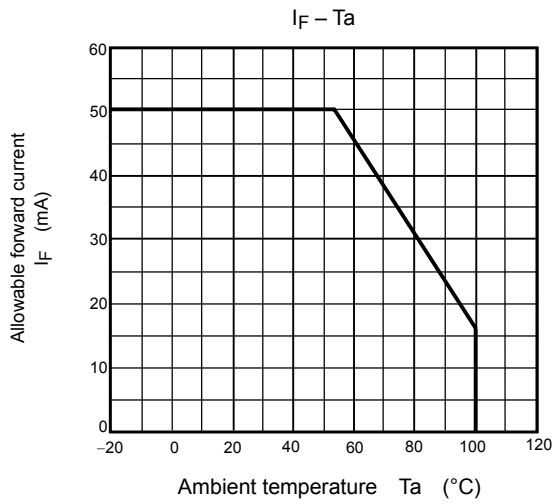
Characteristic		Symbol	Test Condition	Min.	Typ.	Max.	Unit
LED	Forward voltage	$V_F$	$I_F=10\text{mA}$	1.0	1.15	1.3	V
	Reverse current	$I_R$	$V_R=5\text{V}$	—	—	10	$\mu\text{A}$
	Capacitance	$C_T$	$V=0, f=1\text{MHz}$	—	30	—	pF
Detector	Peak off-state current	$I_{\text{DRM}}$	$V_{\text{DRM}}=400\text{V}$	—	10	1000	nA
	Peak on-state voltage	$V_{\text{TM}}$	$I_{\text{TM}}=70\text{ mA}$	—	1.7	2.8	V
	Holding current	$I_H$	—	—	0.6	—	mA
	Critical rate of rise of off-state voltage	$dv / dt$	$V_{\text{in}}=120\text{Vrms}, T_a=85^\circ\text{C}$ (Fig.1)	200	500	—	V / $\mu\text{s}$
	Critical rate of rise of commutating voltage	$dv / dt(c)$	$V_{\text{in}}=30\text{Vrms}, I_T=15\text{mA}$ (Fig.1)	—	0.2	—	V / $\mu\text{s}$

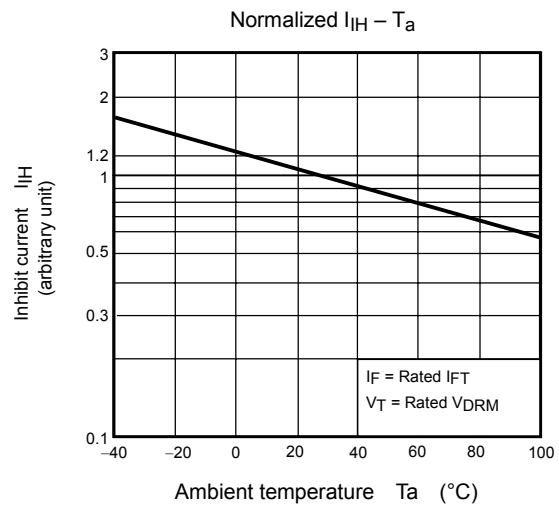
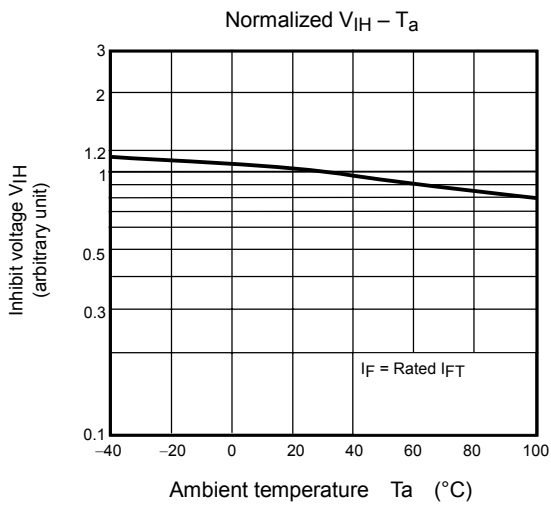
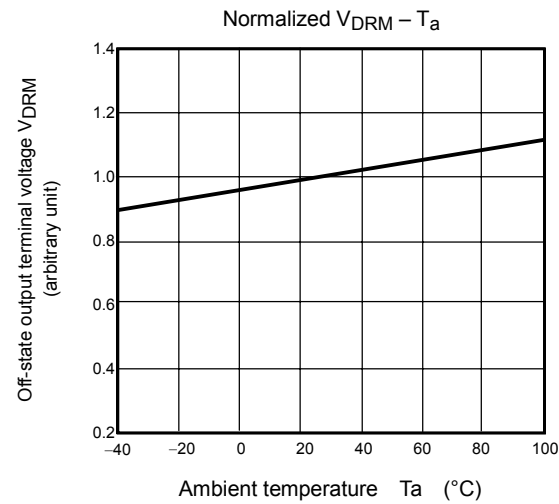
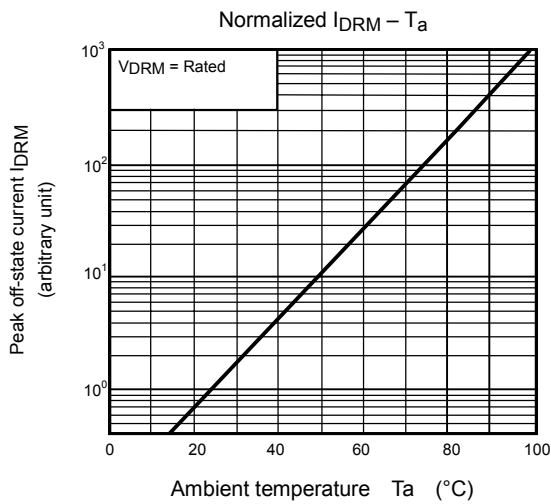
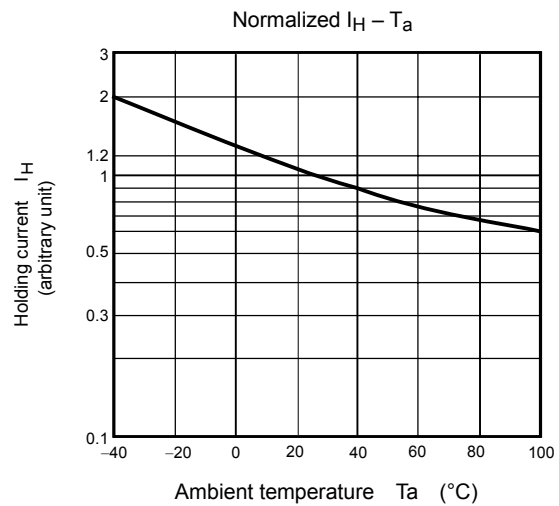
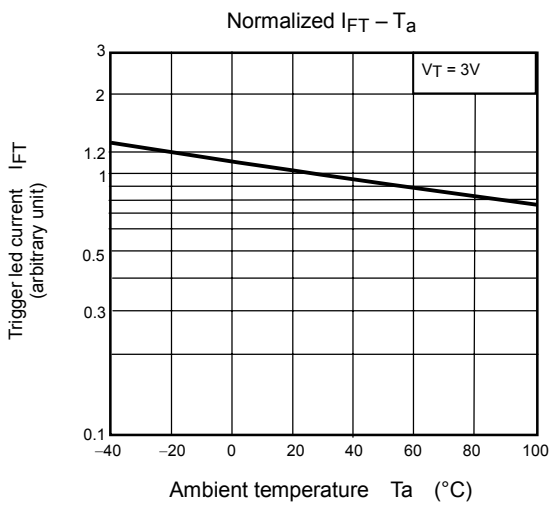
## Coupled Electrical Characteristics (Ta = 25°C)

Characteristic	Symbol	Test Condition	Min.	Typ.	Max.	Unit
Trigger LED current	$I_{\text{FT}}$	$V_T=3\text{V}$	—	5	10	mA
Inhibit voltage	$V_{\text{IH}}$	$I_F=\text{rated } I_{\text{FT}}$	—	—	40	V
Leakage in inhibited state	$I_{\text{IH}}$	$I_F=\text{rated } I_{\text{FT}}$ $V_T=\text{rated } V_{\text{DRM}}$	—	100	300	$\mu\text{A}$
Capacitance (input to output)	$C_S$	$V_S=0, f=1\text{MHz}$	—	0.8	—	pF
Isolation resistance	$R_S$	$V_S=500\text{V}, \text{R.H.} \leq 60\%$	$1 \times 10^{12}$	$10^{14}$	—	$\Omega$
Isolation voltage	$BV_S$	AC, 1 minute	2500	—	—	Vrms
		AC, 1 second, in oil	—	5000	—	
		DC, 1 minute, in oil	—	5000	—	Vdc

Fig.1  $dv / dt$  test circuit







**RESTRICTIONS ON PRODUCT USE**

000707EBC

- TOSHIBA is continually working to improve the quality and reliability of its products. Nevertheless, semiconductor devices in general can malfunction or fail due to their inherent electrical sensitivity and vulnerability to physical stress. It is the responsibility of the buyer, when utilizing TOSHIBA products, to comply with the standards of safety in making a safe design for the entire system, and to avoid situations in which a malfunction or failure of such TOSHIBA products could cause loss of human life, bodily injury or damage to property.  
In developing your designs, please ensure that TOSHIBA products are used within specified operating ranges as set forth in the most recent TOSHIBA products specifications. Also, please keep in mind the precautions and conditions set forth in the "Handling Guide for Semiconductor Devices," or "TOSHIBA Semiconductor Reliability Handbook" etc..
- The TOSHIBA products listed in this document are intended for usage in general electronics applications (computer, personal equipment, office equipment, measuring equipment, industrial robotics, domestic appliances, etc.). These TOSHIBA products are neither intended nor warranted for usage in equipment that requires extraordinarily high quality and/or reliability or a malfunction or failure of which may cause loss of human life or bodily injury ("Unintended Usage"). Unintended Usage include atomic energy control instruments, airplane or spaceship instruments, transportation instruments, traffic signal instruments, combustion control instruments, medical instruments, all types of safety devices, etc.. Unintended Usage of TOSHIBA products listed in this document shall be made at the customer's own risk.
- Gallium arsenide (GaAs) is a substance used in the products described in this document. GaAs dust and fumes are toxic. Do not break, cut or pulverize the product, or use chemicals to dissolve them. When disposing of the products, follow the appropriate regulations. Do not dispose of the products with other industrial waste or with domestic garbage.
- The products described in this document are subject to the foreign exchange and foreign trade laws.
- The information contained herein is presented only as a guide for the applications of our products. No responsibility is assumed by TOSHIBA CORPORATION for any infringements of intellectual property or other rights of the third parties which may result from its use. No license is granted by implication or otherwise under any intellectual property or other rights of TOSHIBA CORPORATION or others.
- The information contained herein is subject to change without notice.