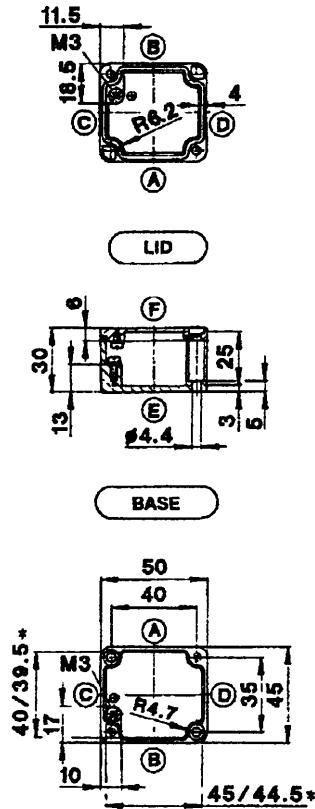


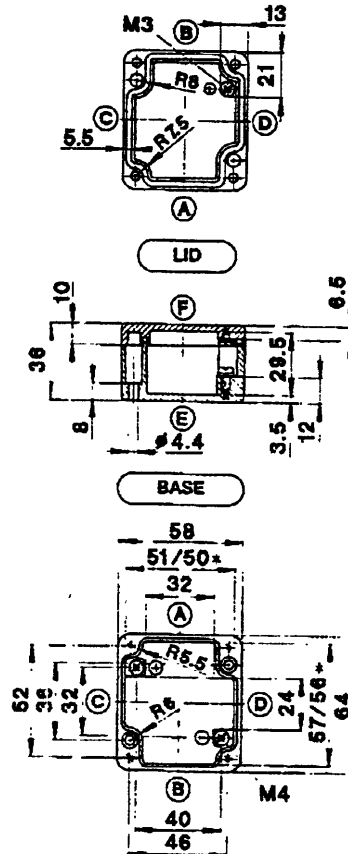
767 396

**50 x 45 x 30 mm**

CA-020 Aluminium enclosure

**58 x 64 x 36 mm**

CA-060 Aluminium enclosure

\* minimum dimensions  
of mounting plate support

type	CA-020
weight	(g) 70
external dimensions	(mm) 50 x 45 x 30
<b>complete enclosures</b>	<b>Part No.</b>
coated, with gasket and lid screws	102.0.0000.00 ●
coated, with gasket and quick release screws	—
coated, with gasket and hex.socket head screws	—
coated, with silicone gasket and lid screws	—
coated, with HF gasket and lid screws	—
saltwater-proof coating, with gasket and lid screws	102.0.0100.00
saltwater-proof coating, passivated, lid screws with gasket	102.0.0060.00
unwashed, unpainted, no accessories	102.0.0340.00
<b>accessories</b> (separate or as a mounting set)	
mounting plate	—
TS mounting rail	—
TS mounting rail	—
grounding rail	—
external attachment brackets	—
external hinges **	—
internal hinges, flexible, for quick-release enclosures	—
internal hinges with lid guiding **	—
silicone gasket for wider temperature range (piece goods)	—

**max. PG threads**

PG	7	9	11	13.5	16	21	29	36	42	48
side A / B	2	1	1	—	—	—	—	—	—	—
side C / D	1	1	—	—	—	—	—	—	—	—

\*\* mechanical enclosure machining required

● = kept in stock

\* minimum dimensions  
of mounting plate support

type	CA-060
weight	(g) 160
external dimensions	(mm) 58 x 64 x 36
<b>complete enclosures</b>	<b>Part No.</b>
coated, with gasket and lid screws	106.0.0000.00 ●
coated, with gasket and quick release screws	—
coated, with gasket and hex.socket head screws	—
coated, with silicone gasket and lid screws	106.0.0940.00
coated, with HF gasket and lid screws	106.0.0060.00
saltwater-proof coating, with gasket and lid screws	106.0.0100.00
saltwater-proof coating, passivated, lid screws with gasket	106.0.0060.00
unwashed, unpainted, no accessories	106.0.0380.00
<b>accessories</b> (separate or as a mounting set)	
mounting plate	951.1.0010.00 ●
TS 5 mounting rail	982.0.0000.00 ●
TS mounting rail	—
grounding rail	—
external attachment brackets	—
external hinges **	—
internal hinges, flexible, for quick-release enclosures	—
internal hinges with lid guiding **	—
silicone gasket for wider temperature range (piece goods)	923.1.0050.00 ●

**max. PG threads**

PG	7	9	11	13.5	16	21	29	36	42	48
side A / B	2	1	1	1	—	—	—	—	—	—
side C / D	1	1	1	1	—	—	—	—	—	—

\*\* mechanical enclosure machining required

● = kept in stock