

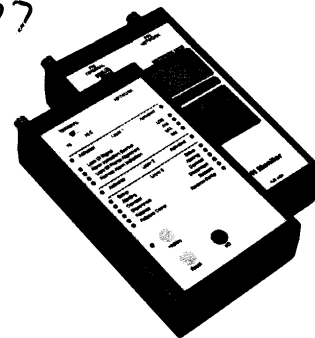
358-3326. Clone: 888-6773

HARRIS

358-3338. Clone: 888-6776

358-3340. Clone: 888-6777

Broadband Testing Products



**TS[®]320/TS[®]420/
TS[®]430 ISDN
Monitors**

Powerful, database driven

ISDN protocol analysis

TS320 Basic Rate Monitor

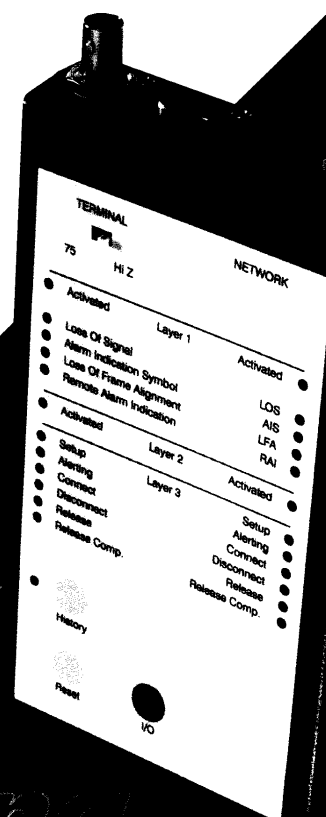
One of a family of monitors for troubleshooting Euro-ISDN lines at the network layer, the TS320 BRI monitor offers basic rate protocol monitoring to analyze the basic rate interface at Layer 1, 2 and 3. This makes the TS320 an ideal product for technicians to quickly and easily verify status in real time. And it is distributed at a competitive price point. Additionally, all units in this family can be used in conjunction with PC protocol analysis software to become powerful maintenance analysis tools that do not require a sophisticated ISDN tester as the network/terminal interface.

TS420 Primary Rate Monitor

The TS420 PRI Monitor is designed for use by installation and maintenance technicians to monitor a Euro-ISDN primary rate interface to verify that the terminal equipment to network protocol is functioning correctly at Layer 1, 2, and 3. LED's alert users, for example, that the 2Mbit/s G.704 frame is good. As a stand alone device, it is easy to use, requires no set up and very little training.

**TS430 Combination
BRI/PRI Monitor**

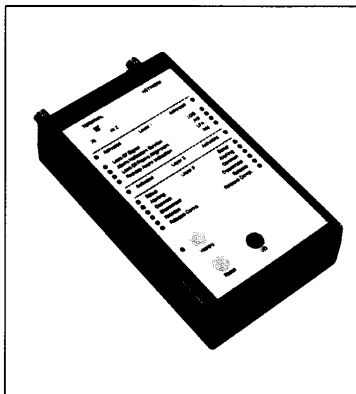
Basic rate and primary rate cannot be used at the same time – the TS430 alerts the technician which interface is active, and monitors for problems. The unit slow flashes green if the 2Mbit/s G.704 frame is good, or the S bus has completed its activation sequence. The TS430 decodes alarms in Layer 1 and indicates loss of signal, frame synchronization, and distant alarms, which can then be isolated and repaired. At Layer 3, the unit decodes a complete sequence for a specific call reference, and each message is decoded and latched until the last message release complete is decoded.



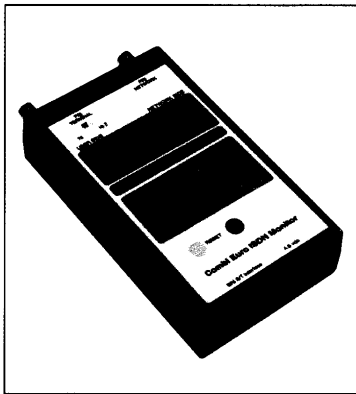
next level solutions

*eur
isdn
testing*

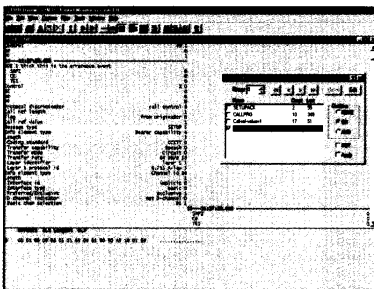
TS320/TS420/TS430 ISDN Monitors



TS420 Primary Rate Monitor



TS430 Combination BRI/PRI Monitor



Protocol Analysis Software

TS320 Features:

ISDN Line Interface:

ISDN Basic Rate S Bus Access CCITT 1.430

LED Indicators:

Layer 1 Status	Layer 2
INFO 0	Layer 3 Messages
INFO 1	SETUP
INFO 2	ALERTING
INFO 3	CONNECT
INFO 4	DISCONNECT
B1 active	RELEASE
B2 active	RELEASE COMPLETE

Accessories:

Carry Bag
S bus RJ45 to RJ45 lead
Serial data lead
Mains Power Supply
User Manual

TS420 Features:

ISDN Line Interface:

ISDN Primary Rate Access CCITT 1.420

LED Indicators:

Layer 1	Layer 3 Messages
Layer 2	SETUP
Loss of Signal	ALERTING
Alarm Indication Signal	CONNECT
Loss of Frame Alignment	DISCONNECT
Remote Alarm Indication	RELEASE
History	RELEASE COMPLETE

Accessories:

Carry Bag
BNC Lead
Serial data lead
Mains Power Supply
User Manual

TS430 Features:

ISDN Line Interface:

ISDN Basic Rate Access CCITT 1.430
ISDN Primary Rate Access CCITT 1.420

LED Indicators:

Layer 1	Layer 3 Messages
Layer 2	SETUP
Loss of Signal	ALERTING
Alarm Indication Signal	CONNECT
Loss of Frame Alignment	DISCONNECT
Remote Alarm Indication	RELEASE
Primary Rate	RELEASE COMPLETE
Basic Rate	

Accessories:

Carry Bag
BNC Lead
Serial data lead
Mains Power Supply
User Manual

Optional Protocol Analysis Software

Minimum PC Hardware Requirements:

Microsoft Windows 95 /
Windows NT
486 CPU with a minimum
of 4 MB RAM
10 MB available hard disk
space for installation
VGA display card

Physical specifications:

Size: 40mm high x 80mm x 170mm
Weight: 350gm
Case: High Impact Plastic

Product design and specifications subject to change without notice. All trademarks belong to their respective companies.