

Commercial MATE-N-LOK Connectors

Housings

Related Product Data

Product Specification

108-1000 Commercial MATE-N-LOK Connectors

Performance Characteristics — pg 41 and 42

Contacts — pg 43 and 44

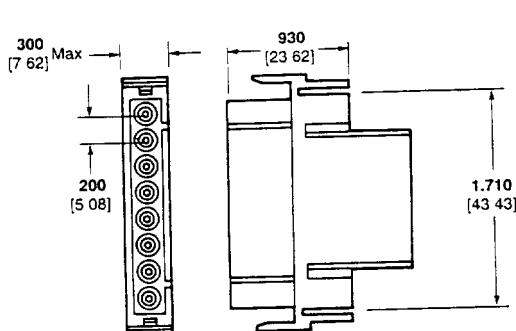
Keying Plug — pg 44

Commoning Tab — pg 43

Technical Documents — pg 60

Mating Pin Headers — pg 49

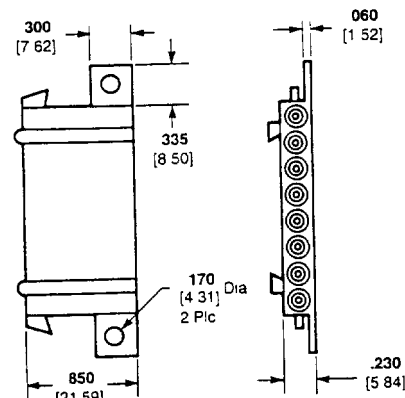
Flange Mount 8 Circuit, In-Line



Pin Housing (Cap)

Part Numbers

UL94V-2 Nylon material, natural color — 1-480460-0
UL94V-0 Nylon material, brck red color — 770861-1



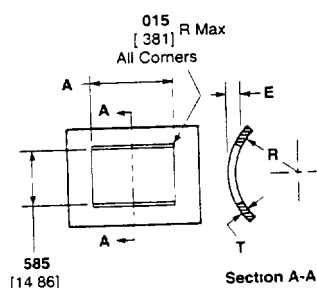
Socket Housing (Plug)

Part Number

UL94V-2 Nylon material, natural color — 1-480459-0

Recommended Panel Cutout for Motor Mount Pin Housing

View is from pin housing entry side



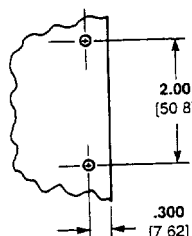
Note: Motor mount housings may be used in flat panels

Number Circuits	Dimension A
6	.715 18 16
8	.910 23 11
10	1.105 28 07
12	1.300 33 02
16	1 690 42 93

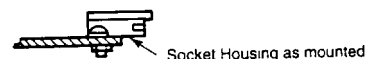
Mounting Information

- 1 Recommended panel thickness "E" is .040- .100 [1 02-2 54] and is dependent on "T" and "R"
- 2 The pin housing must be inserted in a rocking manner
- 3 The panel must be punched so that the housing enters the panel in the same direction as the punch

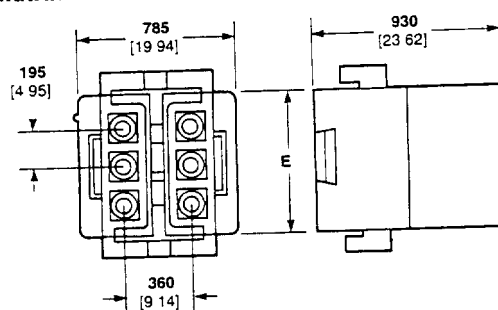
Dimensions are for reference only



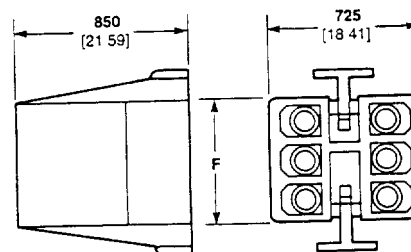
Recommended Socket Housing (Plug) Mounting



Motor Mount 6, 8, 10, 12 and 16 Circuit, Matrix



Pin Housing (Cap)



Socket Housing (Plug)

Number of Circuits	Dimensions		Part Numbers	
	E	F	Pin Housing (Cap)	Socket Housing (Plug)
			UL94V-2 Nylon, Natural	
6	.705 17 90	.610 15 49	1-480271-0	1-480270-0 ¹
8	.900 22 86	.805 20 45	1-480284-0	1-480283-0 ¹
10	1 095 27 81	1.000 25 4	1-480286-0	1-480285-0 ¹
12	1.290 32 77	1.195 30 35	1-480288-0	1-480287-0
16	1 680 42 67	1.585 40 26	1-480439-0	1-480438-0

¹Housing accepts double wire applications where individual insulation diameters do not exceed .115 [2 92]