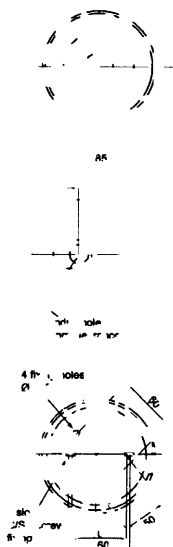
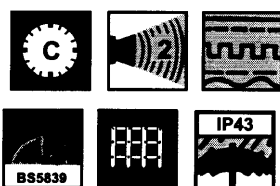
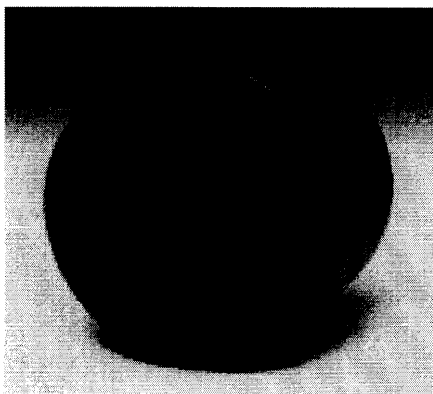


# SYREX ELECTRONIC MULTI TONE SOUNDERS



## Syrex Shrieker

The Syrex Shrieker is a low current fire alarm sounder ideally suited for long cable runs where a low current draw is required. Termination in the base allows quick and easy installation. The Shrieker range so far consists of the following specifications.

Type	Voltage	Current	dB at 1m	Frequency Tones	Ref No
Standard	12V/24V DC	8mA	100 ± 3dB	700/950 Hz	9 KN2424
Slow Whoop	12V/24V DC	18mA	100 ± 3dB	500/1200 Hz	2 KN2442
Afnor	12V/24V DC	5mA	97 ± 3dB	440/554 Hz	2 KN2467
High Output	12V/24V DC	30mA	114 ± 3dB	800/2850 Hz	4 KN2448
Australian	12V/24V DC	18mA	100 ± 3dB	500/1200 Hz	2 KN2460
Standard AC	230V AC	25mA	105 ± 3dB	660/750 Hz	11 KN2432

Distance: see Technical Information section at back of catalogue

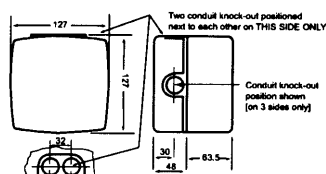
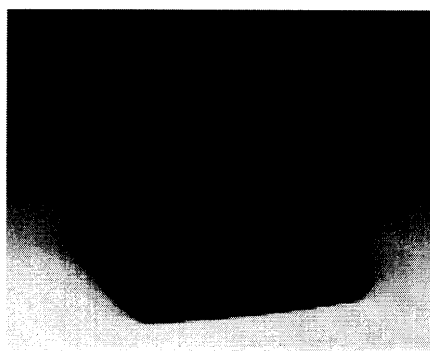
Rating: Continuous

Operating Temp: 0°C to +40°C

Case: High Impact ABS

Weight: 0.2Kg

Finish: Red, White or Grey  
Other colours available, quantities permitting



## Syrex 5 Standard

The Syrex 5 has a choice of 3 distinct sounds available, selectable on unit: continuous, warble and pip. Applications include fire and security systems, conveyor systems, process control alarms and other uses. Fitted with volume control. DC version suitable for synchronisation and remote switching facility.

Voltage Range	Current	Ref No
12V DC	19mA	KN1900
24V DC	20mA	KN1901
110/230V AC	40/12mA	KN1904/5

Audibility: 105 dB at 1m ± 3dB (Volume control)

Distance: see Technical Information section at back of catalogue

Frequency: 800/1000Hz

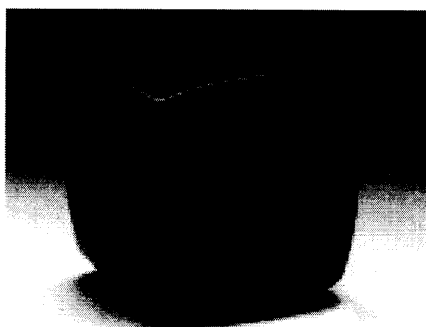
Rating: Continuous

Operating Temp: -40°C to +55°C

Case: High Impact ABS

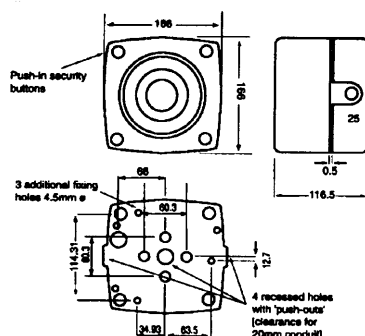
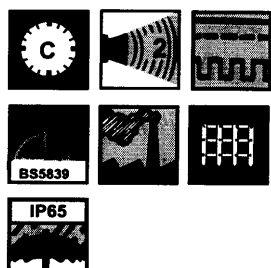
Weight: 0.38kg

Finish: Red  
Other colours available, quantities permitting



## Syrex LC

The Syrex LC is a high output low current consumption sounder having 3 different notes selectable on the same unit: continuous, warble and pip. High impact flame retardant ABS case. Protection to IP65 available as standard. Applications include fire and security systems, conveyor systems, process control alarm, cranes and other uses. Volume control: DC version suitable for synchronisation of units in a confined area. Remote switching facility.



Voltage Range	Current	dB at 1m	Ref No
12V DC	19mA	107	KN1684
24V DC	20mA	110	KN1685
110/230V AC	40/12mA	110	KN1682/3

Audibility: 110 dB at 1m ± 3dB (Volume control)

Distance: see Technical Information section at back of catalogue

Rating: Continuous

Frequency: 800/1000Hz

Operating Temp: -40°C to +55°C

Case: High Impact ABS Flame Retardant

Weight: DC - 0.6kg AC - 0.8Kg

Finish: Red  
Other colours available, quantities permitting