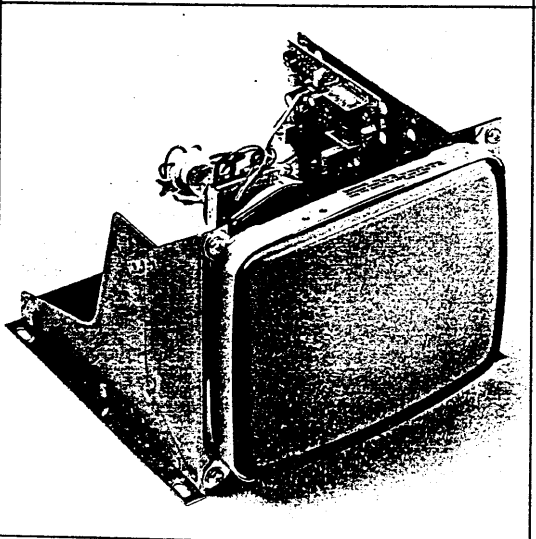
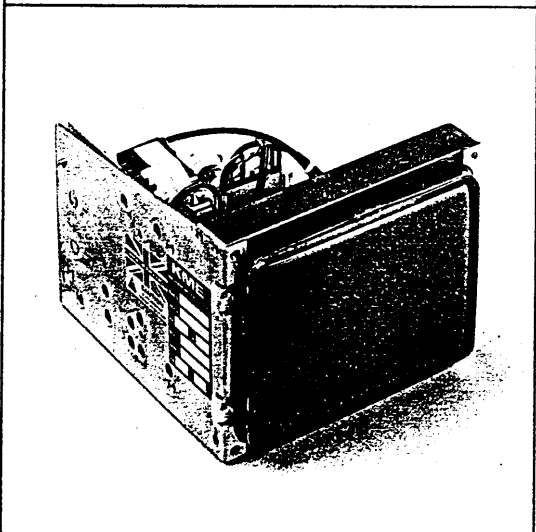
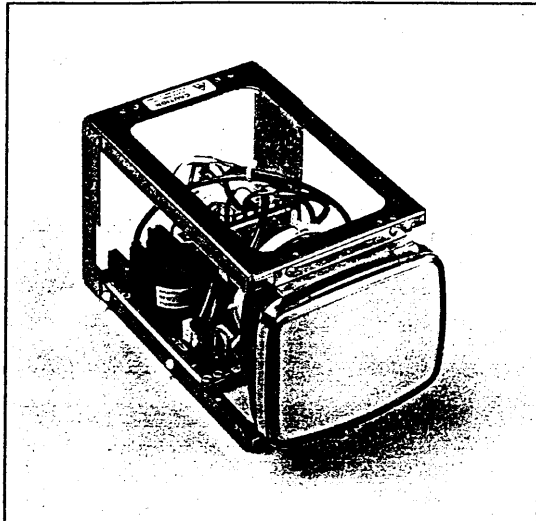


5/6/7/9" MONOCHROME MONITORS

20C SERIES



- 5", 6", 7" and 9" CRT Diagonal
- Alphanumeric or Graphics Display
- TTL or Composite Video Input
- Scanning Frequencies to 32 kHz
- High Video Bandwidth
- Phosphor Options (P4, P31, P39 standard)
- Built by robots
- Through-plated boards for good shock and vibration performance
- Designed and manufactured in the UK

Within the 20C Series of open frame chassis monitors, four models meet the majority of the requirements of the space/cost conscious system designer.

The designs provide for easy mounting in point-of-sale terminals, microcomputers, instrumentation and many other applications where crisp, stable displays are required.

Operational reliability in demanding applications is ensured by the use of through-plated boards.

All operate from 12 Vdc (1 amp) power sources and can be specified for TTL or Composite Video inputs. Power and video connection is made via an industry standard 10-way edge connector.

Display geometry and linearity are factory-set for minimum effort installation and all internal controls are easily accessed.

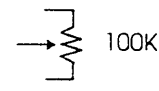
All models are available in board and CRT kit form and as OEM scan board sets only.

Custom chassis design is a KME specialty.

KME has over 10 years experience in the design and manufacture of high performance CRT displays. We set high standards of quality and reliability to which this range of monochrome monitors conforms.

SPECIFICATIONS

CRT				
DIAGONAL	5"	6"	7"	9"
NECK DIAMETER	20mm	20mm	20mm	20mm
DEFLECTION ANGLE	70°	70°	90°	90°
PHOSPHOR	P4, P31, P39	P4, P31, P39	P4, P31, P39	P4, P31, P39
DISPLAY DIMENSIONS	100 X 75 mm	110 x 75 mm	133 x 100 mm	165 x 124 mm
SCREEN FINISH	Polished or non-glare			

INPUT SIGNAL	TTL or Composite video
FORM	10 - way (0.156") Edge
CONNECTOR	1 Main earth
INPUT CONNECTOR	2)
	3) External brightness  100K
	4)
	5 NC
	6 Line sync TTL
	7 +12V
	8 Video TTL or comp signal
	9 Field sync TTL
	10 Signal earth

VIDEO AMPLIFIER	
BANDWIDTH	>25MHz at -3db
RISE AND FALL TIME	<20 nS
AMPLITUDE	2.5 to 5V pk-pk (TTL) 1.0V pk-pk (CV)

HORIZONTAL SCAN	
FREQUENCY	15.6 kHz (std) to 32kHz
AMPLITUDE	2.5 to 5V pk-pk (TTL)

VERTICAL SCAN	
FREQUENCY	40-80 Hz
AMPLITUDE	2.5 to 5V pk-pk (TTL)

POWER	
VOLTAGE	12 Vdc \pm 4% (110/220 Vac option on 9" only)
POWER CONS'N	12W typ. 16w max.

CONTROLS	
EXTERNAL (OPTION)	(contrast, brilliance)
INTERNAL	frequency, phase, amplitude, linearity
	contrast, brilliance, sub-brilliance, focus

ENVIRONMENTAL	
OPERATING TEMP.	0°C to +50°C
STORAGE TEMP.	-20°C to +70°C
HUMIDITY	5 to 90% RH (Non-condensing)

WEIGHT				
INCLUDING CRT	1.5 kg	1.5kg	3kg	4 Kg

SPECIFICATIONS

CRT

5" Monochrome VGA Chassis Monitor

CRT Size : 5"
CRT Phosphors : P4 (White) P31 (Green)
CRT Screen Finish : Non-Glare

INPUT SIGNALS

H. Scanning Frequency : 31.5kHz
V. Scanning Frequency : 49 - 72Hz
Signal Inputs : IBM VGA Specification -
Video : Analogue 0 - 1V pk-pk
H. Sync : TTL (>2.75V pk-pk) +/-ve *
V. Sync : TTL (>2.75V pk-pk) +/-ve *

* Sync Polarity in accordance with IBM:

<u>Pixel Mode</u>	<u>H. Sync</u>	<u>V. Sync</u>	<u>V. Freqy</u>
640 x 480	-	-	60Hz
640 x 400	+	-	60Hz
640 x 350	-	+	70Hz

Input Connectors : Video DSUB15-P (Female)
Pin 2 = Video
Pin 7 = Video Ground
Pin 10 = Sync Ground) Strapped
12 = " ")
Pin 13 = H. Sync
Pin 14 = V. Sync

Power Connection : 2-pin Molex Socket

Power Requirements : 12V dc @ 0.9A (5")
@ 1.2A (14")

DISPLAY

Display Geometry : 2% of Display Height
Display Linearity : Within 2% of Display Height

CONTROLS (On board)

General Linearity
H.LIN H.AMP V.AMP H.PHASE
V.FREQ H.FREQ V.SHIFT
Contrast, Brilliance, Focus

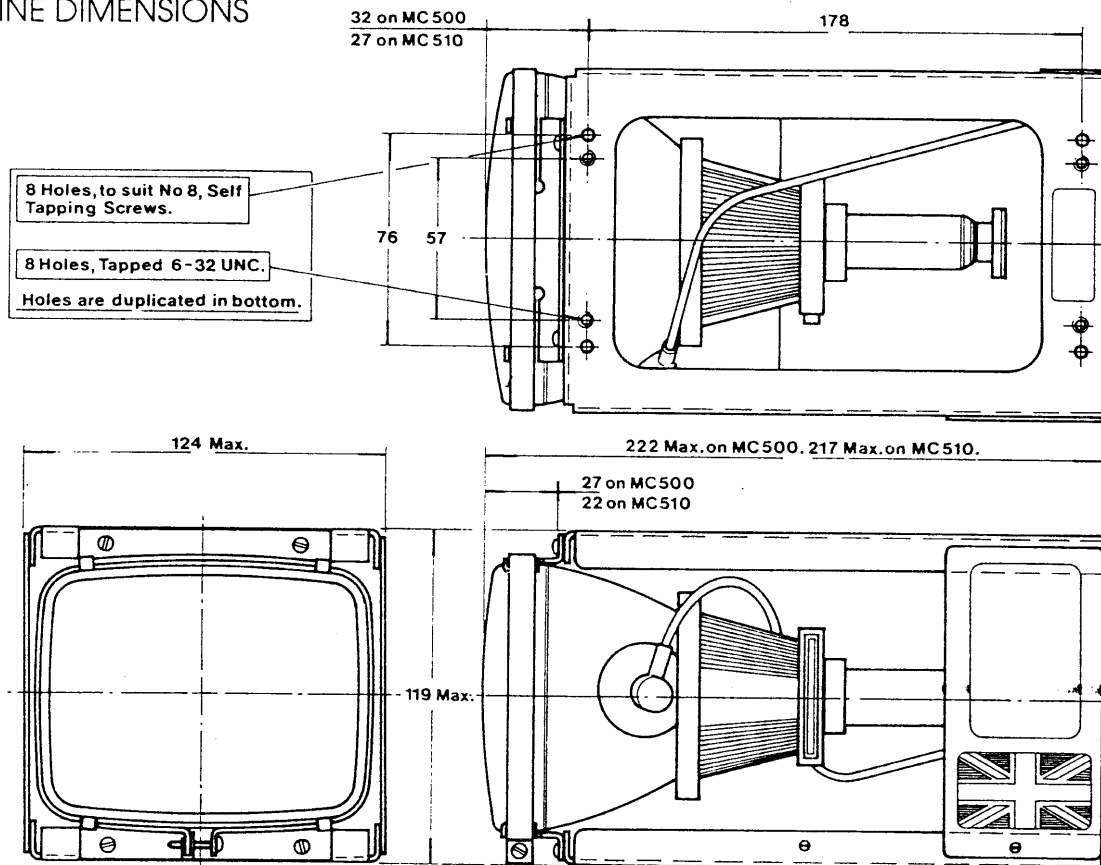
ENVIRONMENT

Operating Temperature : 0 - 55 Deg C
Storage Temperature : -20 to +70 Deg C
Humidity, non condensing : 90% RH
Altitude : 3000m operating
10000m non-operating

In accordance with our policy of continuous product improvement, KME reserves the right to alter specifications and descriptions without prior notification.

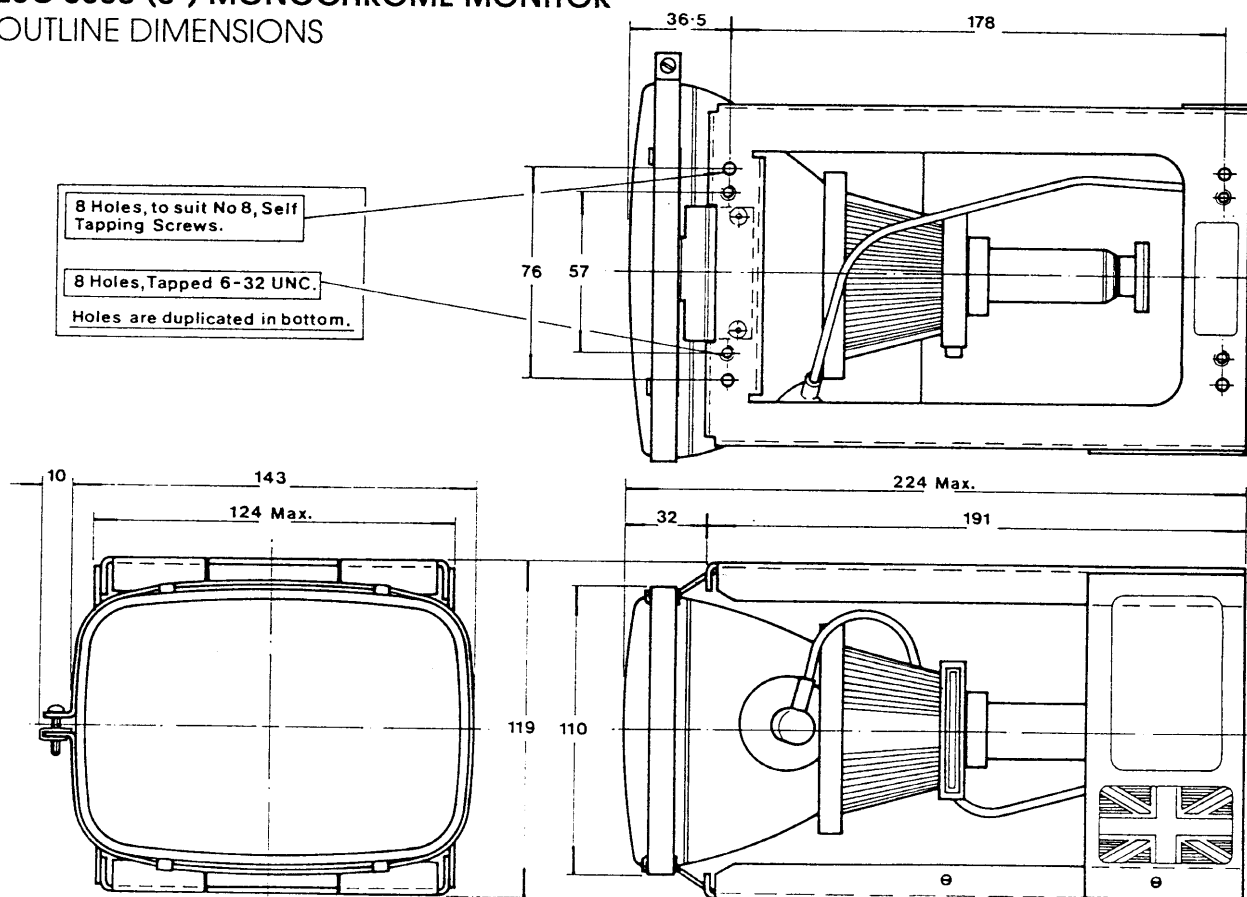
20C 0500 (5") MONOCHROME MONITOR

OUTLINE DIMENSIONS

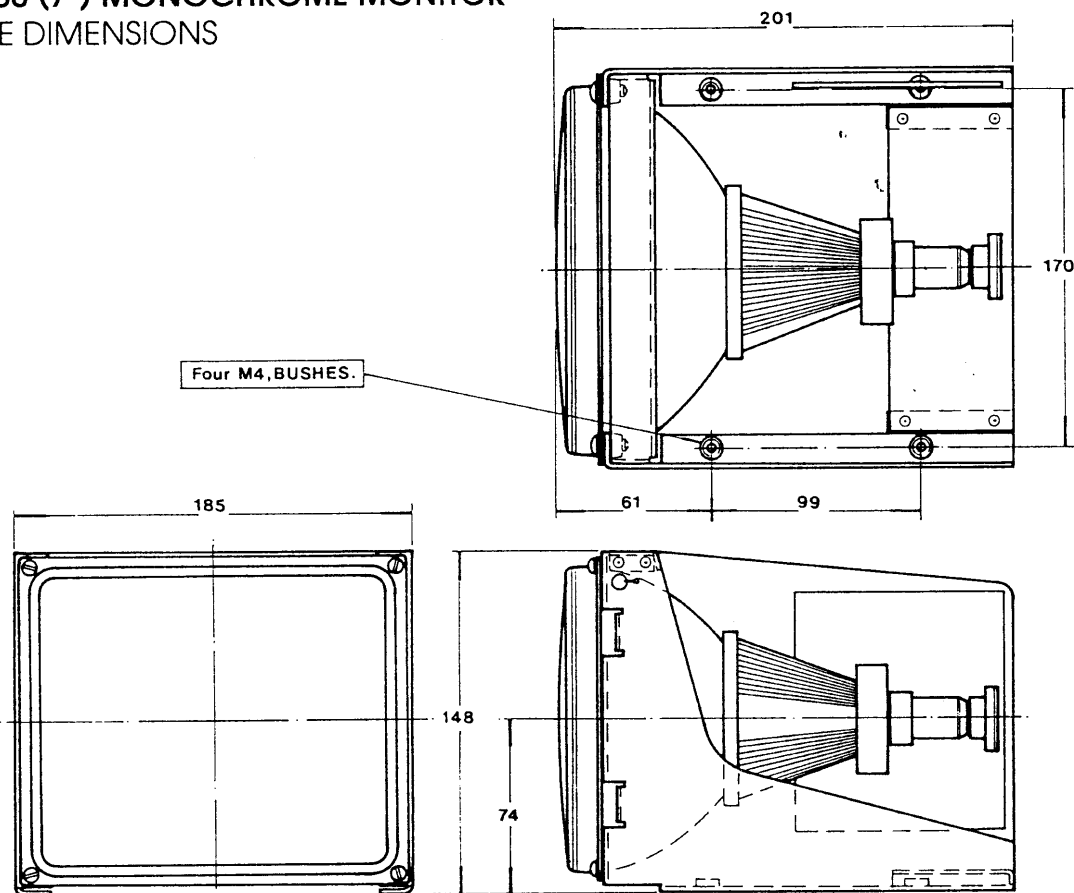


20C 0600 (6") MONOCHROME MONITOR

OUTLINE DIMENSIONS

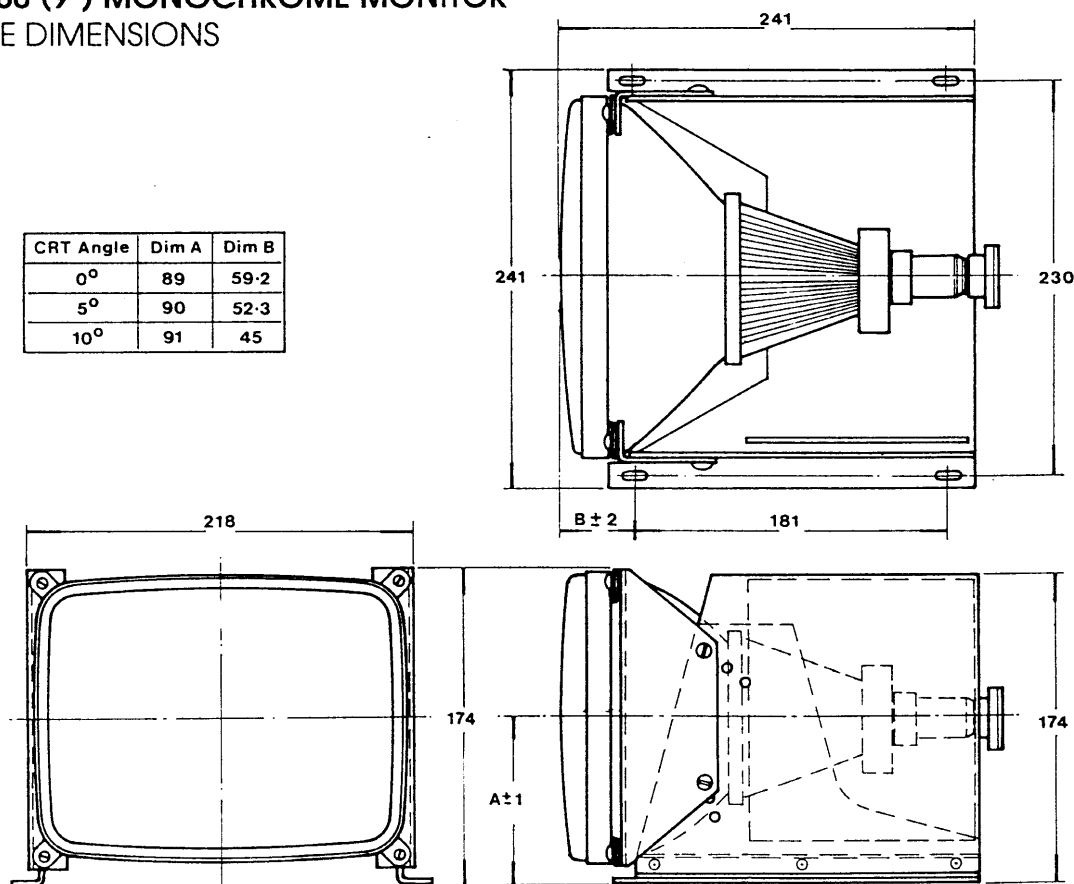


20C 0700 (7") MONOCHROME MONITOR OUTLINE DIMENSIONS



20C 0900 (9") MONOCHROME MONITOR OUTLINE DIMENSIONS

CRT Angle	Dim A	Dim B
0°	89	59.2
5°	90	52.3
10°	91	45



In accordance with our policy of continuous product improvement, KME reserves the right to alter specifications and descriptions without prior notification



Kent Modular Electronics Limited

Maidstone Road Rochester Kent ME1 3QL Tel 0634 830123 Fax 0634 830619