

[MAIN MENU](#)
[HELP](#)

[FAMILIES](#)
[RETURN TO SHOPPING CART](#)

**AMP Connect**


[\[ENGLISH\]](#)
[FRANÇAIS](#)
[DEUTSCH](#)
[ITALIANO](#)
[ESPAÑOL](#)
[日本語](#)
[中文](#)
[한국어](#)

[Alphabetical](#)
[Picture](#)
[Part Number](#)

[SEARCH](#)
[SEARCH](#)
[SEARCH](#)

Y2K - OK

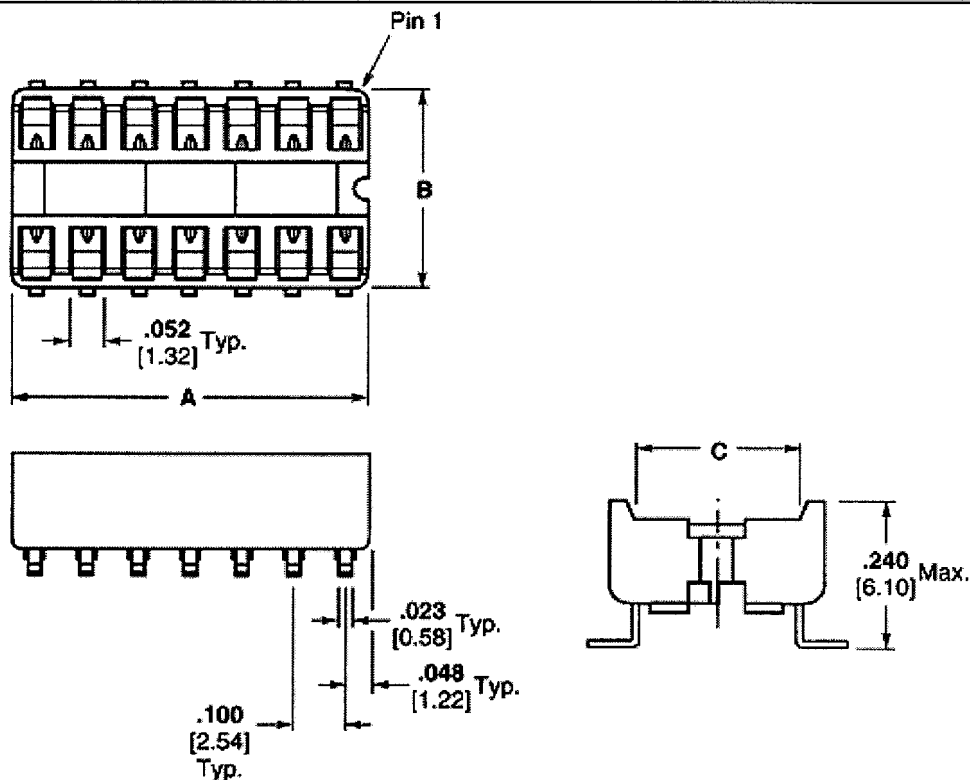
Go To Step Search™ Screen

2-382409-3 -- 1 of 1 products

Active

[General INFO](#)
[SPEC INFO](#)
[SUBCATEGORIES](#)
[SPECIFICATIONS](#)

**IC Sockets**  
**DIP Sockets**

Please use Customer Drawing or CAD file for design activity; line art and other pictures are general representations of product dimensions.



Line art represents typical product only.

- [Rec. Mounting Dimensions](#)
- [Product Photo](#)

<b>Searchable Features:</b>	
<b>Product Type</b>	Socket
<b>No. of Positions</b>	28
<b>Row-to-Row Spacing</b>	.650 [16.51] in. [mm]
<b>Profile</b>	Standard
<b>Contact Mount</b>	Surface Mount
<b>Frame Style</b>	Ladder

<b>Leg Style</b>	Surface Mt. 90° bend
<b>Contact Material</b>	Phosphor Bronze
<b>Contact Plating</b>	Tin
<b>Contact Style</b>	Stamped + Formed
<b>Max. Height Above PCB</b>	.205 [5.20] in. [mm]
<b>Temperature Rating</b>	105° C
<b>Packaging Method</b>	Tube
<b><i>Other Properties:</i></b>	
<b>AMP Proprietary Name</b>	DIPLOMATE DL
<b>Dim. A</b>	1.395 [35.43] in. [mm]
<b>Dim. B</b>	.694 [17.63] in. [mm]
<b>Dim. C</b>	.621 [15.77] in. [mm]
<b>Dim. D</b>	.650 [16.51] in. [mm]
<b>Product Series</b>	Standard
<b>Socket Type</b>	Dual Leaf-SMT
<b>Color</b>	Brown
<b>Centerline</b>	.100 [2.54] in. [mm]
<b>Housing Material</b>	PCT Glass Reinforced
<b>Housing Flammability Rating</b>	UL 94V-0
<b>Operating Temperature</b>	-55° to +105°C
<b>Application</b>	Production
<b>Qty./Tube</b>	15
<b>Qty. Tubes/Box</b>	100

---

[\[ Main Menu \]](#) | 
 [\[ Help \]](#) | 
 [\[ Family Search \]](#) | 
 [\[ Return to Shopping Cart \]](#) | 
 [\[ Feedback \]](#) | 
 [Top of Page](#)