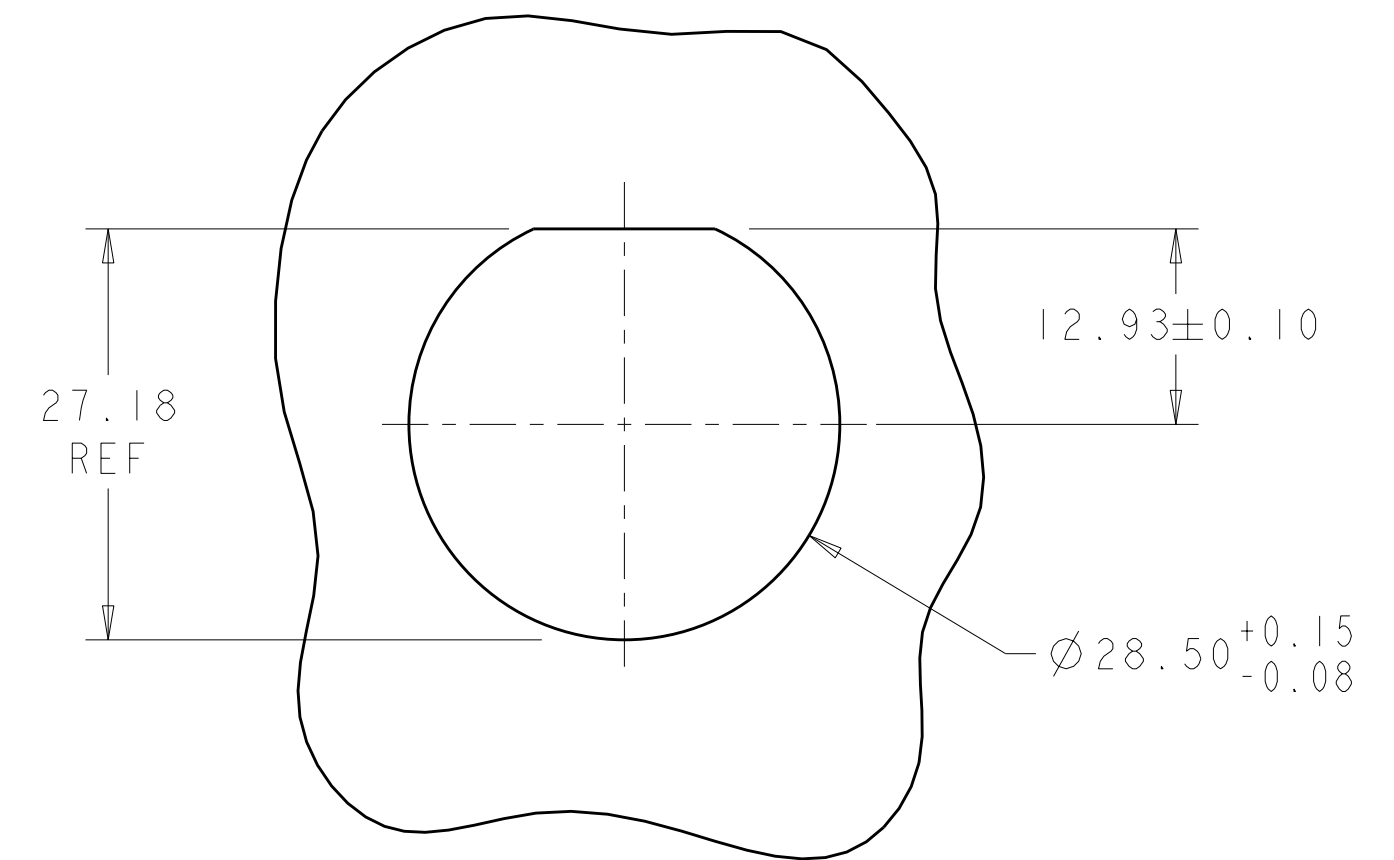
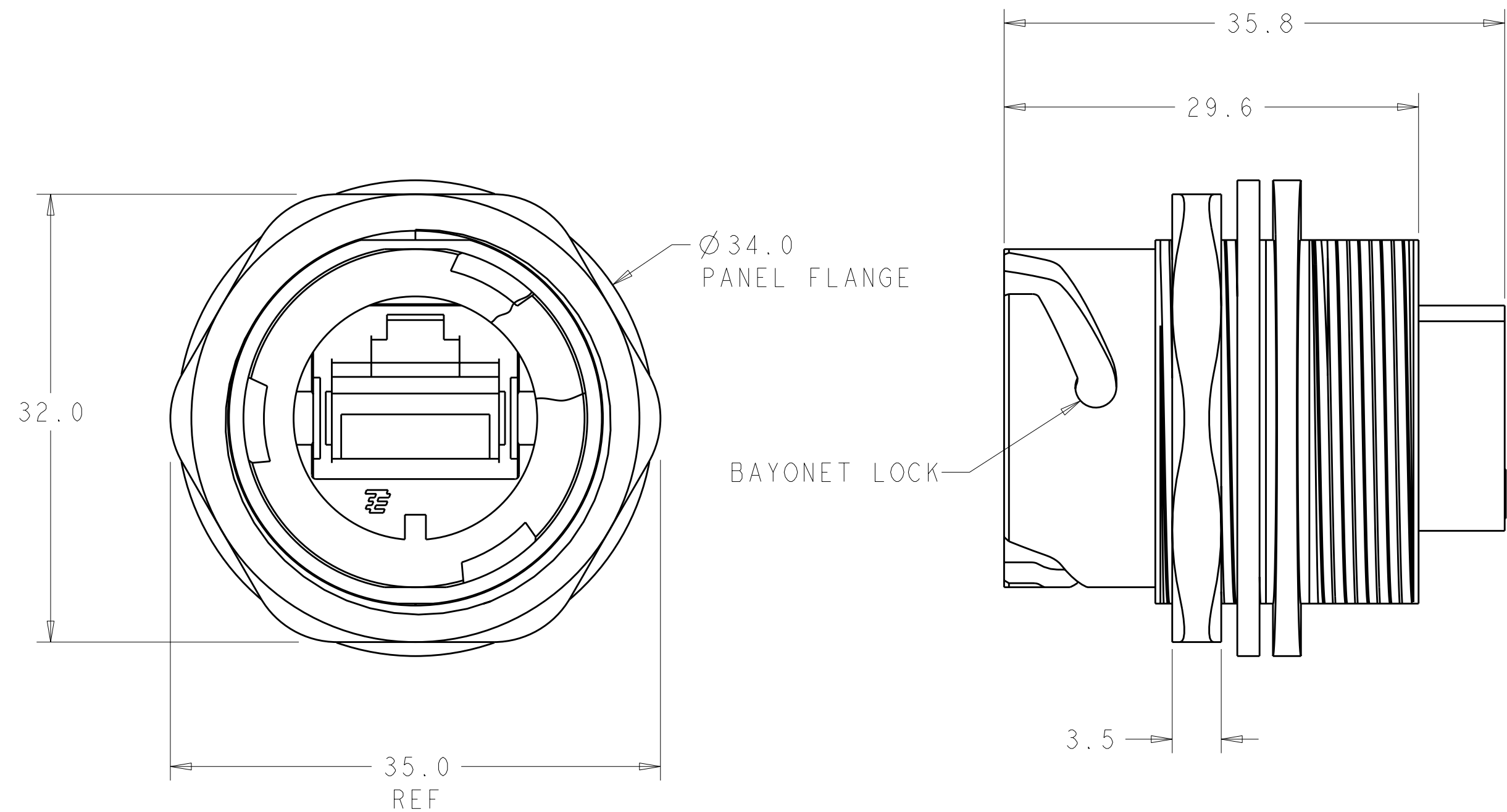
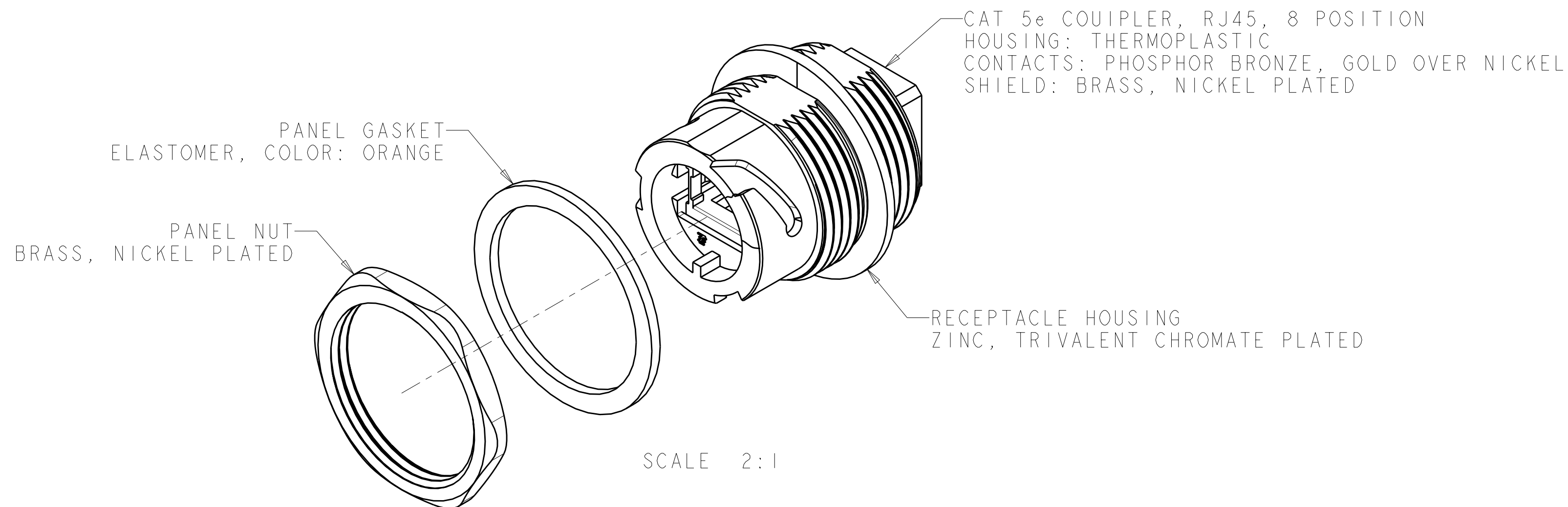


LOC	DIST	REVISIONS					
		P	LTR	DESCRIPTION	DATE	DWN	APVD
-	-		AI	REVISED PER ECO-09-010030	24APR2009	SS	MS




RECOMMENDED PANEL CUTOUT
3.2mm MAXIMUM PANEL THICKNESS



SCALE 2:1

SHIELDED	2008615-2
UNSHIELDED	2008615-1
DESCRIPTION	PART NUMBER

1. CONNECTOR MAY BE FRONT OR REAR PANEL MOUNTED. VIEWS SHOW PANEL NUT AND GASKET LOCATION FOR THE REAR PANEL MOUNTED VERSION.
2. COUPLER LINES CROSSOVER BETWEEN POSTS.
3. PANEL NUT AND PANEL GASKET ARE PACKAGED UNASSEMBLED IN POLYBAG.

THIS DRAWING IS A CONTROLLED DOCUMENT FOR TYCO ELECTRONICS CORPORATION IT IS SUBJECT TO CHANGE AND THE CONTROLLING ENGINEERING ORGANIZATION SHOULD BE CONTACTED FOR THE LATEST REVISION.		DWN S. WELDON 01 APR 2008		Tyco Electronics Harrisburg, PA 17105-3608	
DIMENSIONS:		TOLERANCES UNLESS OTHERWISE SPECIFIED:		NAME	
mm		0 PLC ±1.0 1 PLC ±0.2 2 PLC ±0.10 3 PLC ±0.000 4 PLC ±0.0000 ANGLES ±		RECEPTACLE KIT, 8 POSITION INDUSTRIAL ETHERNET CONNECTOR	
		PRODUCT SPEC -		-	
MATERIAL		APPLICATION SPEC -		RESTRICTED TO	
FINISH		WEIGHT -		-	
-		CUSTOMER DRAWING		SCALE 3.1 SHEET OF REV A	