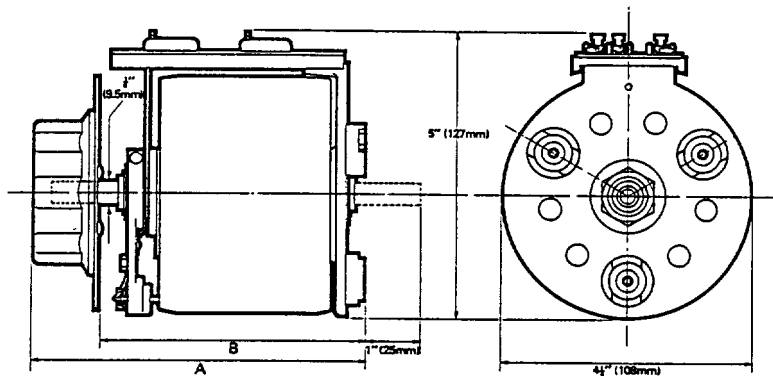
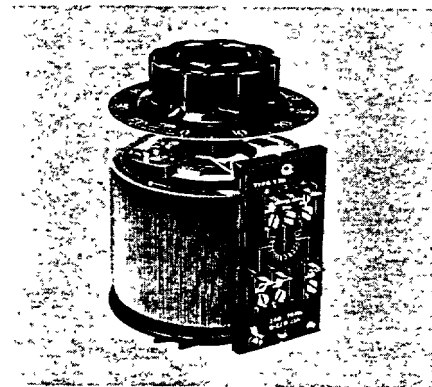
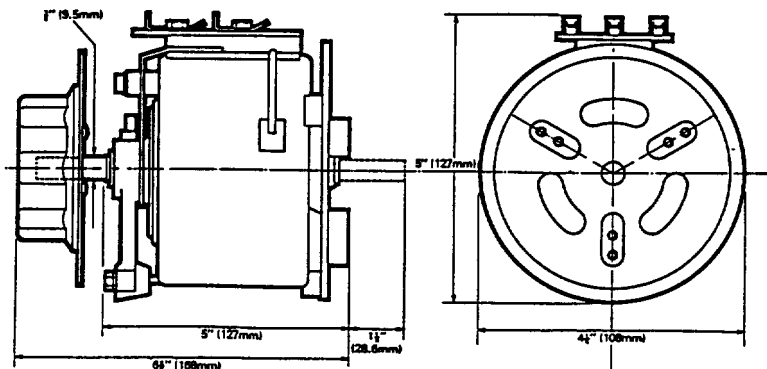
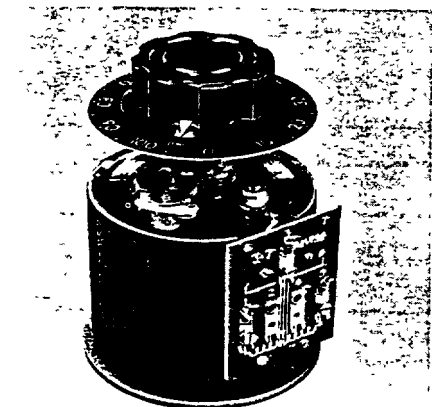


BASIC UNIT	A	B	C	D	E	F (FIXING HOLES)	DIAL FIXING
S1L	2 $\frac{1}{2}$ (73)	1 (25)	4 $\frac{1}{2}$ (112)	$\frac{3}{8}$ (9.53)	4 $\frac{1}{2}$ (121)	3 Holes M5 tap $\times \frac{3}{16}$ " (7) on 3" (76.2) P.C.D.	3 Holes $\frac{1}{2}$ " Dia. (4mm) 120° apart on 1 $\frac{1}{2}$ " (32) P.C.D.
S2L	3 $\frac{1}{2}$ (96)	1 (25)	4 $\frac{1}{2}$ (112)	$\frac{3}{8}$ (9.53)	4 $\frac{1}{2}$ (121)		
S3 & S3L	4 $\frac{1}{2}$ (112)	1 (25)	4 $\frac{1}{2}$ (112)	$\frac{3}{8}$ (9.53)	4 $\frac{1}{2}$ (121)		
S4	4 $\frac{1}{2}$ (118)	1 (25)	4 $\frac{1}{2}$ (112)	$\frac{3}{8}$ (9.53)	4 $\frac{1}{2}$ (121)		
33A & 33Y	2 $\frac{1}{2}$ (57)	1 $\frac{1}{4}$ (30)	3 $\frac{1}{2}$ (79)	$\frac{1}{2}$ (6.35)	3 $\frac{1}{2}$ (89)	3 Holes M4 $\times \frac{1}{8}$ " (15) on 1" (25.4) P.C.D.	3 Holes $\frac{1}{2}$ " Dia. (4mm) 120° apart on 1" (25.4) P.C.D.
34A, 34Y, 34Z	2 $\frac{1}{2}$ (64)	1 $\frac{1}{4}$ (30)	3 $\frac{1}{2}$ (89)	$\frac{1}{2}$ (6.35)	3 $\frac{1}{2}$ (100)		
36A & 36Y	3 $\frac{1}{2}$ (79)	1 $\frac{1}{4}$ (30)	3 $\frac{1}{2}$ (89)	$\frac{1}{2}$ (6.35)	3 $\frac{1}{2}$ (100)		
38Y	3 $\frac{1}{2}$ (98)	1 $\frac{1}{4}$ (30)	3 $\frac{1}{2}$ (89)	$\frac{1}{2}$ (6.35)	3 $\frac{1}{2}$ (100)		



BASIC UNIT	A	B
V3 & V3H	5 $\frac{1}{2}$ (130)	3 $\frac{1}{2}$ (98)
V5 & V5H	5 $\frac{1}{2}$ (146)	4 $\frac{1}{2}$ (114)
V6 V6H & V6EH	6 $\frac{1}{2}$ (162)	5 $\frac{1}{2}$ (130)
V8H	6 $\frac{1}{2}$ (168)	5 $\frac{1}{2}$ (137)

MOUNTING DETAILS—3 Holes M5 tap $\times \frac{1}{8}$ " (11) deep on 3" (76) P.C.D.
DIAL FIXING—3 Holes $\frac{1}{2}$ " (4) Dia. 120° apart on 1 $\frac{1}{2}$ " (32) P.C.D.



MOUNTING DETAILS—3 Holes M5 tap $\times \frac{1}{8}$ " (13) deep on 3" (76) P.C.D.
Alternative—3 Holes M5 tap $\times \frac{1}{8}$ " (13) deep on 2 $\frac{1}{2}$ " (55.5) P.C.D.
DIAL FIXING—3 Holes $\frac{1}{2}$ " (4) Dia. 120° apart on 1 $\frac{1}{2}$ " (32) P.C.D.

ENCAPSULATED SERIES

This series of Variable Transformers comprises models bearing the Zenith "S" series type numbers and the Torovolt "30" series of encapsulated models. They are designed for panel mounting into O.E.M. equipment, where, in the case of the Torovolt 30 series models, the rated current is based on the use of a metal panel (65 sq. cms.) as a heatsink. When no heatsinking is available the rated current should be reduced to that given for G2 and G3 assemblies. (See selection list).

Manual and motor driven units are available in single, two and three gang assemblies and the resin encapsulation provides protection in handling as well as ensuring a robust and compact method of assembly.

SINGLE UNIT LOAD RATING 0.265-1.152 kVA INPUT VOLTAGE 240V Single Phase

BASIC UNIT	Input Voltage	Output Voltage Over volt connection	Line volt connection	Rated Current Amps	Maximum Current Amps
33Y ✓	240	0.270	0-240	0.9*	1.1*
34Z ✓	240		0-240	1.15*	1.4*
34Y ✓	240		0-240	1.4*	1.65*
36Y ✓	240		0-240	1.75*	2.1*
38Y ✓	240		0-240	2.5	3.0
S3	240		0-240	3.0	3.75
S4	240		0-240	4.0	4.8

SINGLE UNIT LOAD RATING 0.24-0.9 kVA INPUT VOLTAGE 115V Single Phase

BASIC UNIT	Input Voltage	Output Voltage Over volt connection	Line volt connection	Rated Current Amps	Maximum Current Amps
33A	115	0-135	0-115	1.75*	2.1*
34A	115	0-135	0-115	2.8*	3.4*
S1L	120		0-120	3.0	3.75
36A	115	0-135	0-115	3.6*	4.3*
S2L	120		0-120	5.0	7.5
S3L	120		0-120	6.0	7.5

*Currents marked thus refer to single units mounted on heatsink.

V SERIES

Probably the most popular Variable Transformer Series covering the range 1.5 Amps to 4.8 Amps at 240V mains, and from 3 Amps to 7.5 Amps at 115 volts.

Their compact size makes them suitable for building into equipment, or suitably enclosed, for a multitude of experimental or bench-top type applications. They are widely used in Industry, Governmental Departments and Laboratories, Public Utilities, Technical Colleges and Universities where their portability and reliability ensures instant and troublefree service.

SINGLE UNIT LOAD RATING 0.42-1.15 kVA INPUT VOLTAGE 240V Single Phase

BASIC UNIT	Input Voltage	Output Voltage Over volt connection	Line volt connection	Rated Current Amps	Maximum Current Amps
V3H	240	0-270	0-240	1.5	1.75
V5H	240	0-270	0-240	2.5	2.75
V6H	240	0-270	0-240	3.0	3.75
V8H	240	0-270	0-240	4.0	4.8

SINGLE UNIT LOAD RATING 0.43-0.86 kVA INPUT VOLTAGE 115V and 440V Single Phase

BASIC UNIT	Input Voltage	Output Voltage Over volt connection	Line volt connection	Rated Current Amps	Maximum Current Amps
V3	115	0-135	0-115	3.0	3.75
V5	115	0-135	0-115	5.0	7.5
V6	115	0-135	0-115	6.0	7.5
V6EH	440		0-440	1.25	1.5

58 SERIES

Having a similar form of construction to the V series which it complements, the 58 series has been retained from the Torovolt range of Variable Transformers because its rating of 5A (6 Amp maximum) at 240V is a popular one and falls between the 4 Amp V8H and the 6 Amp Y12H. Two gang and three gang models are available as well as a low voltage (115V) unit rated at 8 Amps (10 Amps maximum).

SINGLE UNIT LOAD RATING 1.44 kVA INPUT VOLTAGE 240V Single Phase

BASIC UNIT	Input Voltage	Output Voltage Over volt connection	Line volt connection	Rated Current Amps	Maximum Current Amps
58Y	240		0-240	5.0	6.0

SINGLE UNIT LOAD RATING 1.15 kVA INPUT VOLTAGE 115V Single Phase

BASIC UNIT	Input Voltage	Output Voltage Over volt connection	Line volt connection	Rated Current Amps	Maximum Current Amps
58A	115	0-135	0-115	8.0	10.0