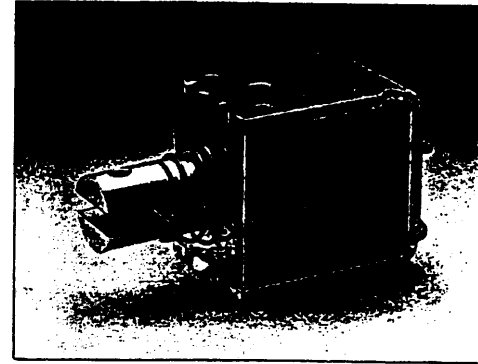


# Solenoids

## Series 41 Small, powerful, high force/stroke ratio solenoid



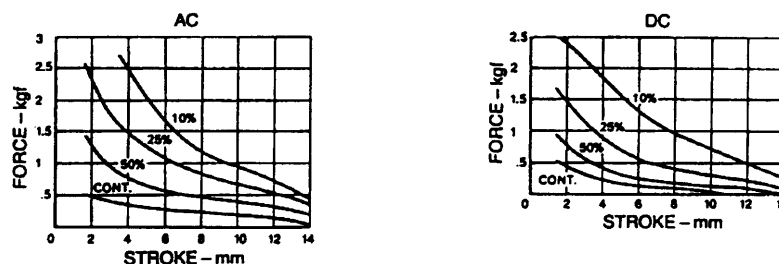
### GENERAL DESCRIPTION

- AC & DC types
- Pull and thrust versions
- Shading ring for quiet AC operation

### PERFORMANCE

		ITEM	SPECIFICATION
Electrical		Maximum on Time	See table below
		Closed power (continuous rating)	AC: 10.5VA.      DC: 6.5W.
		Maximum permissible voltage	240V
		Insulation	All coils tested to frame at 1500V RMS 50Hz.
Mechanical		Weight	Total: 142g. approx.      Plunger: 35g
		Ambient temperature	The information given on this page is based on a room temperature of 20°C allowing for a nominal 75°C temperature rise in the coil.
		Force/stroke curves	These force curves show average performance only. In addition to normal manufacturing tolerances, deviations can be expected at some voltages due to the coil winding tolerances.
		Approvals	Solenoids which are approved to the Canadian Standards Association requirements can be supplied if specified.

### FORCE/STROKE CURVE



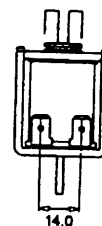
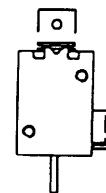
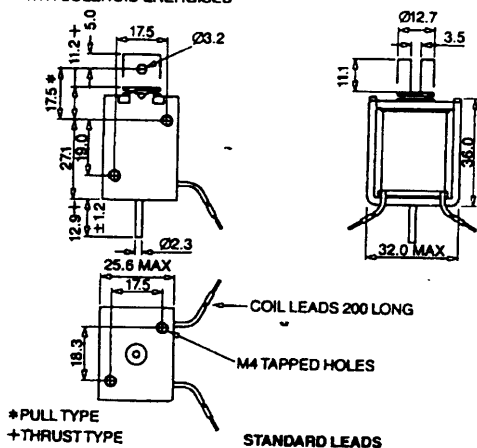
### MAXIMUM ON TIME

	10%		25%		50%	
	1 cycle	Cont. cycling	1 cycle	Cont. cycling	1 cycle	Cont. cycling
AC	50 sec	30 sec	2.75 min	1.7 min	8 min	6.25 min
DC	35 sec	20 sec	1.75 min	1.0 min	4.5 min	3.75 min



## DIMENSIONS (mm)

WITH SOLENOID ENERGISED



FASTON TAGS "250" TYPE

## CODING

4 1		1 2 X		X X X			X X X			
BASIC	Standard		0							
	Faston Tags (Use coil **3 only)		2							
TYPE/ACTION	AC		1							
	DC		6							
	Pull		1							
	Push (S)		2							
	Standard		0							
	With Push-off Spring		1							
COIL	24V AC 50Hz		0 1		0 2		0 3		0 4	
	50V AC 50Hz		0 8		0 9		1 0		1 1	
	115V AC 50Hz		1 5		1 6		1 7		1 8	
	220V AC 50Hz		2 3		2 4		2 5		2 6	
	240V AC 50Hz		3 1		3 2		3 3		3 4	
	115V AC 60Hz		1 9		2 0		2 1		2 2	
	220V AC 60Hz		2 7		2 8		2 9		3 0	
	240V AC 60Hz		3 5		3 6		3 7		3 8	
	6V DC		5 4		5 5		5 6		5 7	
	9V DC		5 8		5 9		6 0		6 1	
	12V DC		6 2		6 3		6 4		6 5	
	24V DC		7 2		7 3		7 4		7 5	
	28V DC		7 6		7 7		7 8		7 9	
	36V DC		8 0		8 1		8 2		8 3	
	50V DC		8 4		8 5		8 6		8 7	
	115V DC		8 8		8 9		9 0		9 1	
	220V DC		9 2		9 3		9 4		9 5	
	240V DC		9 6		9 7		9 8		9 9	
	Standard Leads								0	
	Faston Tags "250" Type								3	

BLP reserve the right to change without prior notice the information contained in this leaflet

Consumer Protection Act 1987 and Health & Safety at Work Act etc., 1974

BLP products are designed, manufactured and tested to ISO 9001 quality standards. BLP products are capable of being operated by and capable of switching high voltages and currents. Care must therefore be exercised in the installation, protection and use of such products. If in doubt please contact your supplier or BLP Engineering Department immediately.

BLP Components Ltd., Exning Road, Newmarket, Suffolk CB8 0AX, England  
Tel: +44 (0)1638 665161 Fax: +44 (0)1638 660718



ELECTROMAGNETICS