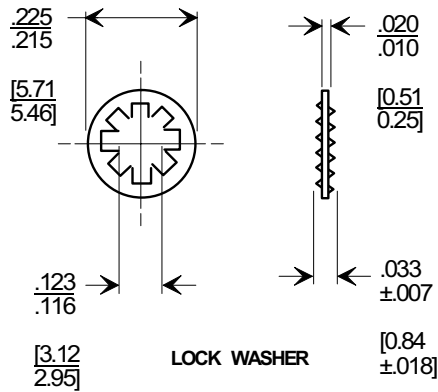
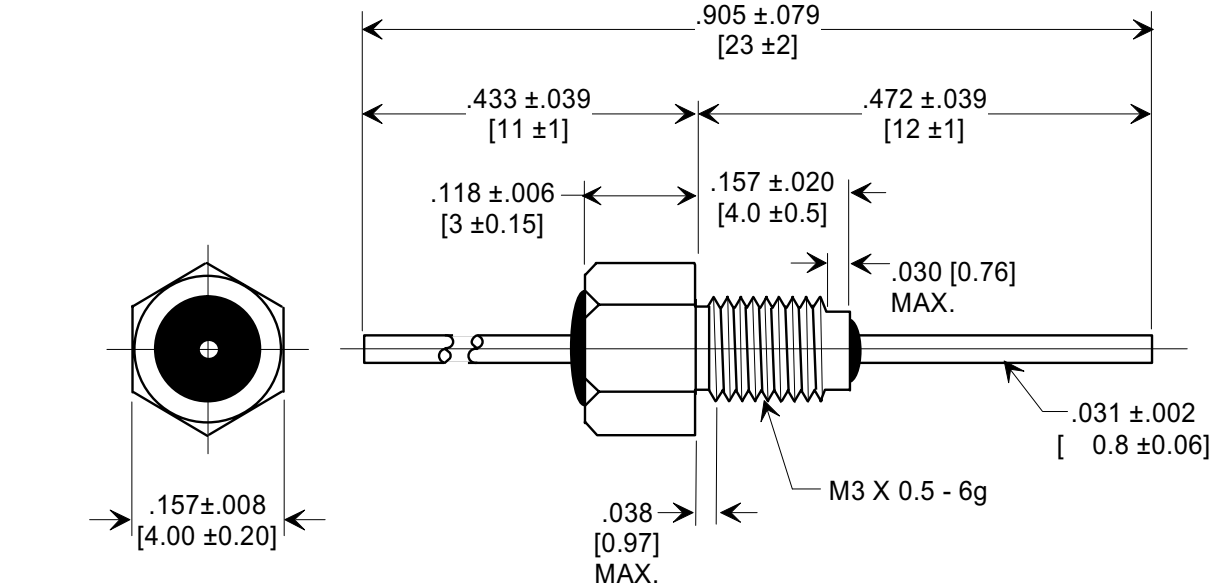
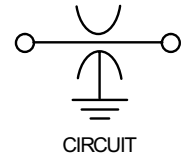


MARKETING SALES DRAWING
DIMENSIONS IN INCHES - DO NOT SCALE THIS DRAWING
DIMENSIONS IN METRIC []

Electrical Testing
per Tusonix standard
test plans and Mil-Std-202
Test Methods.



NOTES:

1. OPERATING TEMP. RANGE: -55°C TO +125°C.
2. SILVER PLATED CASE, LEAD, AND LOCK WASHER.
3. MAX. RECOMMENDED MOUNTING TORQUE : 0.23 Nm.
4. MAX. RECOMMENDED SOLDERING TEMPERATURE : 260° C. SEE INSTALLATION RECOMMENDATIONS.
5. TUSONIX TRADEMARK AND PART VARIATION NUMBER STAMPED ON HEX FLATS.

STYLE	VAR.	CAP.(pf)	TOLERANCE	DC WORKING VOLTAGE		DC CURRENT (AMPS)	DWV (VDC)	MIN. NO LOAD INSERTION LOSS (db) @ 25°C PER MIL-STD-220				
				85°C	125 °C			1 MHz	10 MHz	100 MHz	1 GHz	10 GHz
4400	094	4,700	GMV	150	100	10	500	----	15	30	45	55

X-2015 Rev-0	REVISION RECORD	Original Release C.O. 19991013-1-02	0		--TOLERANCES-- Unless Otherwise Specified		Title BUSHING STYLE EMI FILTER	
					DECIMAL ± NOTED		Drawn S.M. 10-14-99	
					ANGLES ±		Approved E.F. 10-14-99	
					TUSONIX TUCSON, ARIZONA		A 4400-094	

X-2015 Rev-0