

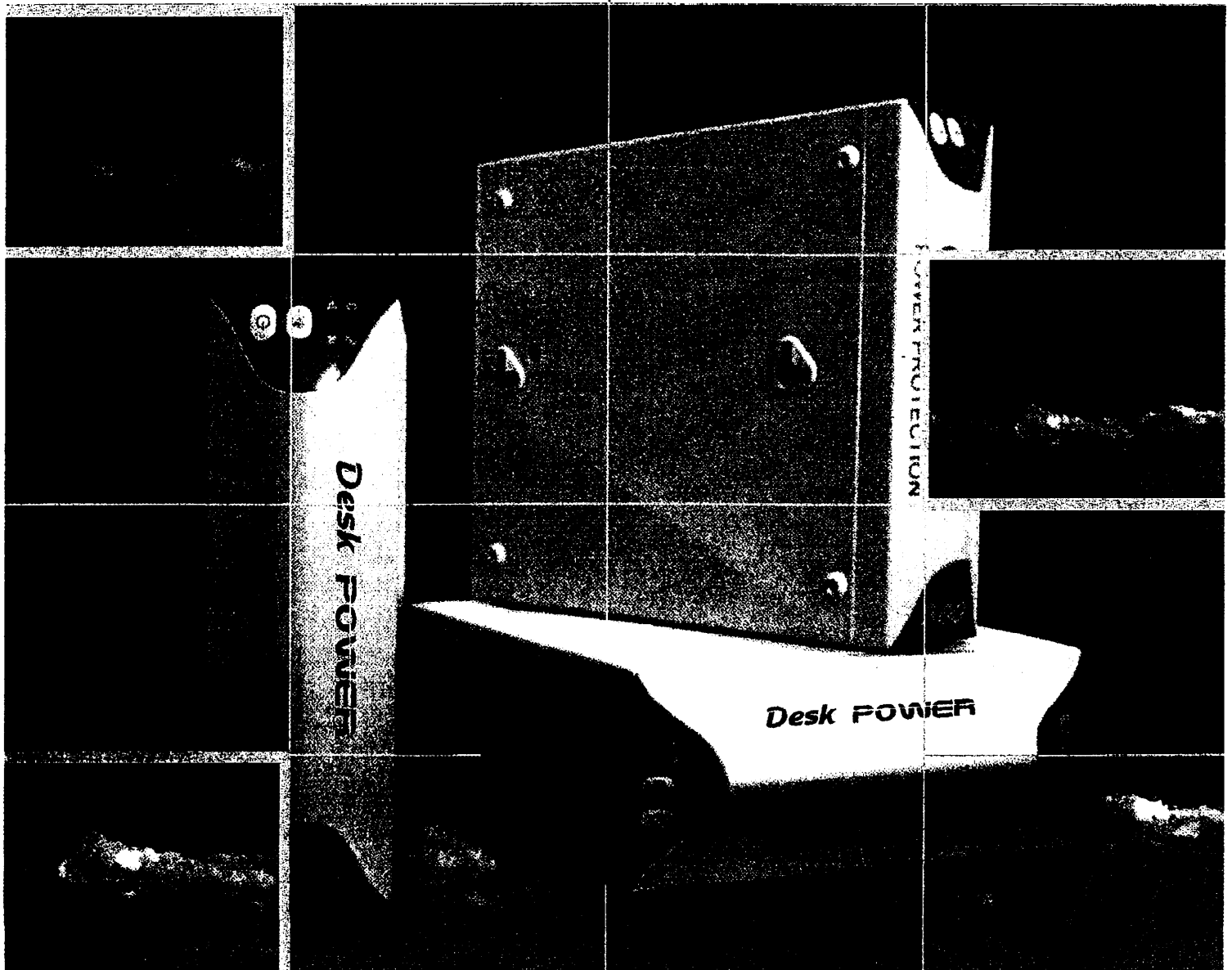
373 1560

Desk POWER

UPS 300VA, 500VA, 650VA

CHLORIDE
POWER PROTECTION

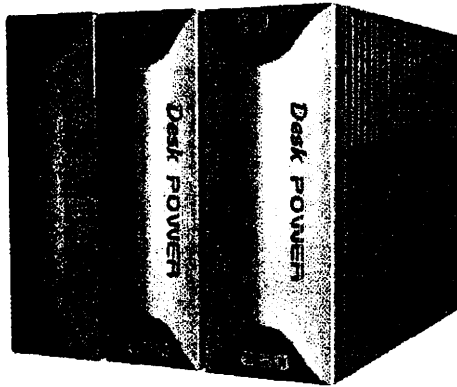
230V / 120V
RS232 / USB



Desk POWER

Desk Power offers users the most advanced features in its range.

Its size, no larger than a book, make the **Desk Power** the smallest unit in its category. This means that it unit can be installed vertically, horizontally or wall-mounted to take up a minimal amount of space in the workstation or PABX area. Despite its reduced size, the **Desk Power** is the only product in its range which includes advanced features such as:



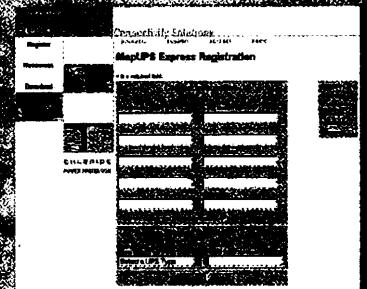
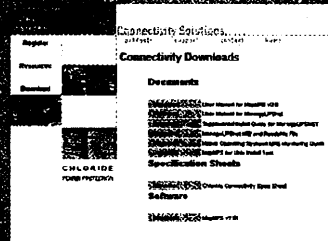
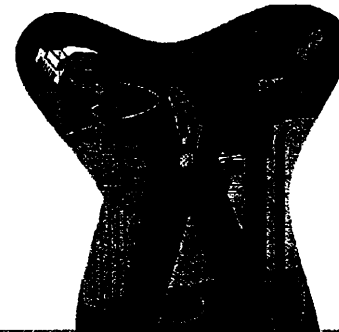
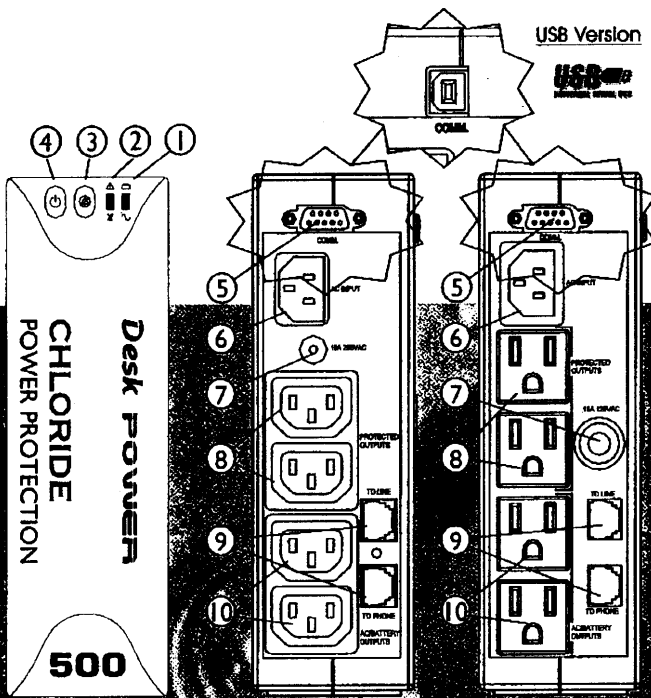
- * Reduced size and weight
- * 230V and 120V versions
- * Data line protection filter
- * Monitoring software
- * 2 connections with overload protection
- * 2 or 4 connections with battery protection
- * RS232 or USB communications included with all models



MopUPS® Express is the management software which comes with the **Desk Power**. This software enables you to monitor the UPS unit and to manage alarm and organized shutdowns of the protected computer equipment where the software is installed.

Designed for

(For more information please request a catalogue of connectivity solutions.)



Approximate Autonomy

Approximate Autonomy	200VA	500VA	850VA
15"	15 min	14 min	15 min
15"	15 min	14 min	15 min
17"	15 min	14 min	15 min
21"	15 min	14 min	15 min

Express is supplied with:

- 1x Desk Power unit
- 1x MopUPS Express software
- 1x USB cable
- 1x RS232 cable
- 1x Power cord
- 1x User manual

TECHNICAL DATA

UPS Type		DESK POWER 300	DESK POWER 500	DESK POWER 650
Electrical Data				
Power (VA/W)		300/180	500/300	650/390
Input	Voltage	AC 230V / AC 120V		
	Voltage Window	AC 180-280V, maximum value 290 Vrms ver. 230V AC 90-146V, maximum value 150 Vrms ver. 120V		
	Input protection	10 ^a Circuit breaker		
	Frequency	50/60 Hz \pm		
	Power Factor	0.6		
Battery	Type	Maintenance-free Lead		
	Autonomy 100% / 50% load (min.)	3/8	3/8	3/8
	Voltage	12V/20W	12V/32W	12V/9Ah
Output	Voltage	AC230V / AC120 V		
	Voltage Tolerance	Less than 1V with respect to input AC230V \pm 10% / AC120V \pm 10%		
	Frequency	Same as input voltage 50/60Hz \pm 1Hz		
	Admissible overloads	120% \pm 10% rated load < 4 minutes 150% \pm 15% rated load < 10 seconds		
	Line mode Battery mode			
	Line mode Battery mode			
General Data				
Safety Radio disturbance emission Resistance to disturbances Performance		CE List ver. 230V / UL ver. 120v CISPR 22, CLASS B IEC 1000-4-2/3/4/5, Level 3		
Ambient working temperature Ambient storage temperature		>95% >70% 0°C-40°C -15°C-50°C		
Relative humidity allowed		0-95% without condensation		
Mechanical Data				
UPS	Weight (kg)	2.5	3.2	3.9
	Dimensions (mm)			
	Width	60	60	75
	Height	190	190	190
Packaging	Weight (kg)	3.0	3.7	4.4
	Dimensions (mm)			
	Width	140	140	140
	Height	275	275	275
Indicators		LED on front panel, acoustic alarm		
Connections				
Input		IEC320-C14		
Output (UPS protection)	AC230V	IEC320-C13*2		IEC320-C13*4
	AC120V	NEMA 5-15R*2		NEMA 5-15R*4
Output (Voltage protection)	AC230V	IEC320-C13*2		IEC320-C13*1
	AC120V	NEMA 5-15R*2		NEMA 5-15R*1
Line filter		Si		
Communication port		SUB-D 9-pin or USB connection, depending on version		
Battery hot swap	AC230V	NO		
	AC120V	YES		

Battery Backup Times

