

OUVU

WATER HEATER

THE NAME STANDS FOR

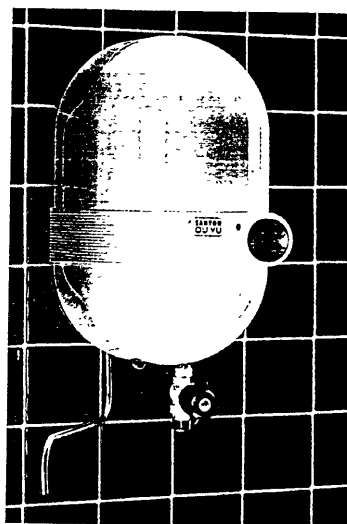
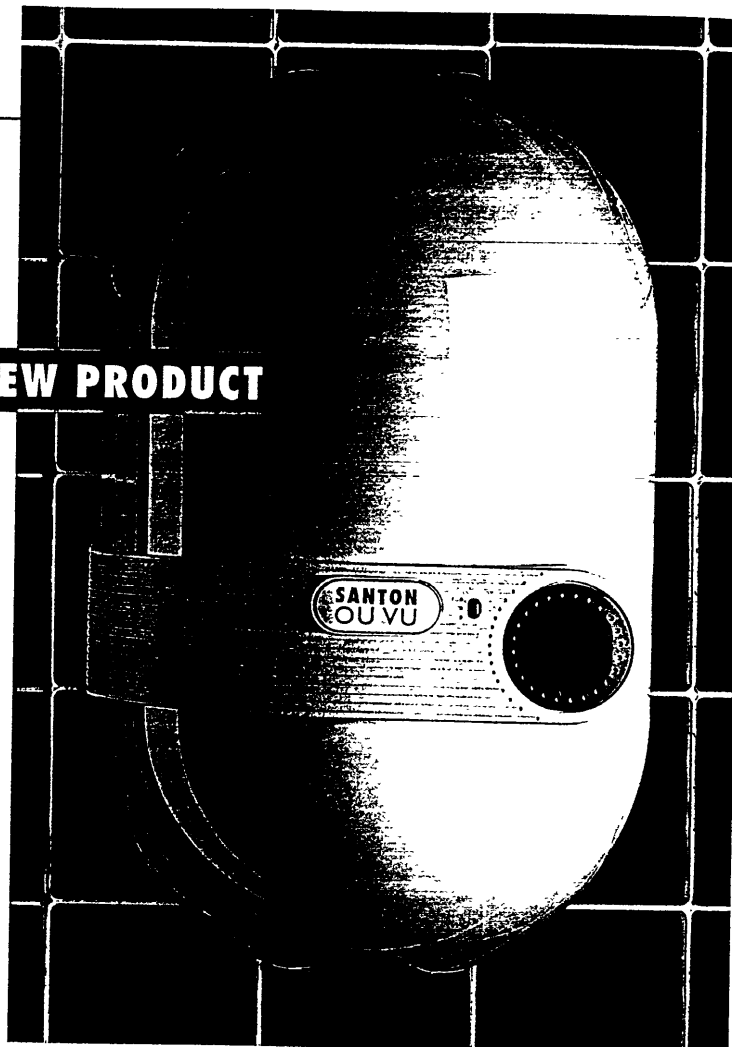
**Oversink,
Undersink,
Vented,
Unvented.**

"OUVU" is a brand new point of use waterheater product range from Santon. It is available in variants to cover all wash hand basin applications and represents the very latest in economical hot water services.

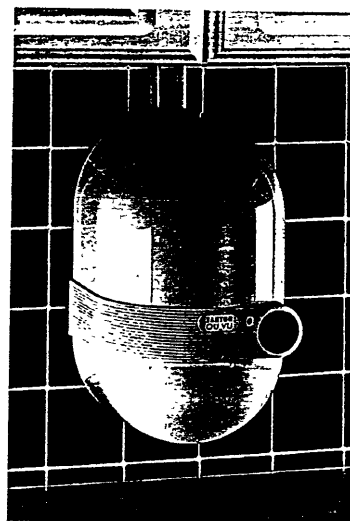
- Brand new concept in point-of-use electric water heating.
- Exciting new shape.
- The most competitively priced product available today.
- Leads the class in insulation and safety.
- With guaranteed 'sealed for life' can.
- Simplest to install with push fit final water connections and quickest to replace.
- 8 models to choose from - 7 litres capacity, 3kW as standard or 1.2kW optional heating elements.
- Ideal for use with Range thermostatic blender.



NEW PRODUCT



OU7 Oversink



OH7 Undersink

7036899 - OH7
7036875 - OV7
7036887 - OV7U

SPECIFICATION

THE NEW LANGUAGE IN
ELECTRIC WATER HEATING

Santon call the new concept "OUVU" shape - 'organic'. The total product has been developed to be the future in point-of-use hot water not only from its looks but from the installers viewpoint as well.

"OUVU" uses push-fit final water connections and a L, N & E terminal block for wiring - plumbers AND electricians will find that their site time is dramatically reduced.

And when it comes to price - compare it for yourself, you'll find "OUVU" is hard to beat.

"OUVU" is supplied with a complete 'sealed for life' container that is guaranteed for one year.

'Sealed for life' means there's no heater plate or removable element and so if, in the future, there's a need to replace the element the whole inner container is taken away and a new one fitted - it couldn't be simpler (or quicker). The cost of this rapid replacement container will be comparable with the current replacement heater plate and assembly.

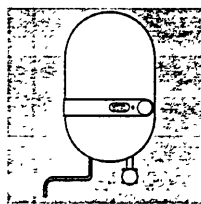
PRODUCT RANGE

Vented Type

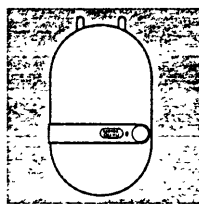
Code OV7	7 litre, Oversink, 3.0kW Complete with Tap and Spout
Code OV7E	7 litre, Oversink, 1.2kW Complete with Tap and Spout
Code OV7U	7 litre, Undersink, 3.0kW For use with Cistern or Vented Tap
Code OV7UE	7 litre, Undersink, 1.2kW For use with Cistern or Vented Tap

Unvented Type

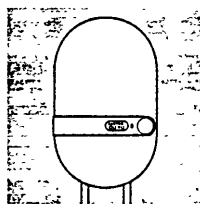
Code OH7	7 litre, 3.0kW Undersink can be used with Thermostatic Blender
Code OH7E	7 litre, 1.2kW Undersink can be used with Thermostatic Blender
Code OH7A	7 litre, 3.0kW Oversink can be used with Thermostatic Blender
Code OH7AE	7 litre, 1.2kW Oversink can be used with Thermostatic Blender



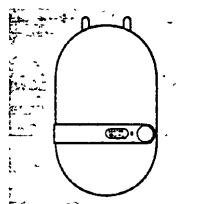
OU VU open outlet
oversink model



OU VU unvented
undersink model

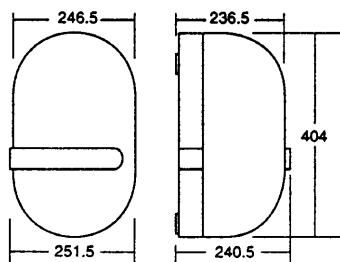


OU VU unvented
oversink model



OU VU cistern fed
undersink model

DIMENSIONS (mm)



Storage Volume
7 litres

Temperature Control
Adjustable thermostat on all models. With a temperature setting locking facility.

Temperature Range
35°C - 77°C with $\pm 4\%$ accuracy.

Power
3kW as standard with 1.2kW option. All models include a red 'power on' neon indicator.

Element
Vented models - copper sheathed.
Unvented models - incoloy sheathed.

Container
Two copper deep drawn halves tig welded together. Element soldered 'in' and all other connections brazed directly into container.

CFC FREE Insulation
Injection moulded polystyrene nominal thickness 20mm

Flowrate
Up to 5 litres a minute.

Operating Pressure
Unvented units - inlet valve pressure regulated to 3.5bar.

High Limit Cut-Out
Thermal fuse on all models.
Unvented models only - Double pole non-self resetting cut-out.
Vented Oversink - via swanneck outlet.
Vented Undersink - via vented tap.
Unvented - via expansion vessel/relief valve.

Electrical
Wire into terminal block.

Connections
Cable through bottom or rear of backplate.

Water Connections
10mm push-in fittings.

10mm Swanneck
stainless steel tubing with satin brushed finish.

Cover
Flame retardant ABS, drip proof design.

Tap (vented oversink models)
15mm plastic with integral earth continuity strap.

Approvals
BS 5750 Factory manufactured