

# LMP8640/LMP8640HV

## Precision High Voltage Current Sense Amplifier

### General Description

The LMP8640 and the LMP8640HV are precision current sense amplifiers that detect small differential voltages across a sense resistor in the presence of high input common mode voltages with a supply voltage range from 2.7V to 12V.

The LMP8640 accepts input signals with common mode voltage range from -2V to 42V, while the LMP8640HV accepts input signal with common mode voltage range from -2V to 76V. The LMP8640 and LMP8640HV have fixed gain for applications that demand accuracy over temperature. The LMP8640 and LMP8640HV come out with three different fixed gains 20V/V, 50V/V, 100V/V ensuring a gain accuracy as low as 0.25%. The output is buffered in order to provide low output impedance. This high side current sense amplifier is ideal for sensing and monitoring currents in DC or battery powered systems, excellent AC and DC specifications over temperature, and keeps errors in the current sense loop to a minimum. The LMP8640 and LMP8640HV are ideal choice for industrial, automotive and consumer applications, and it is available in TSOT-6 package.

### Features

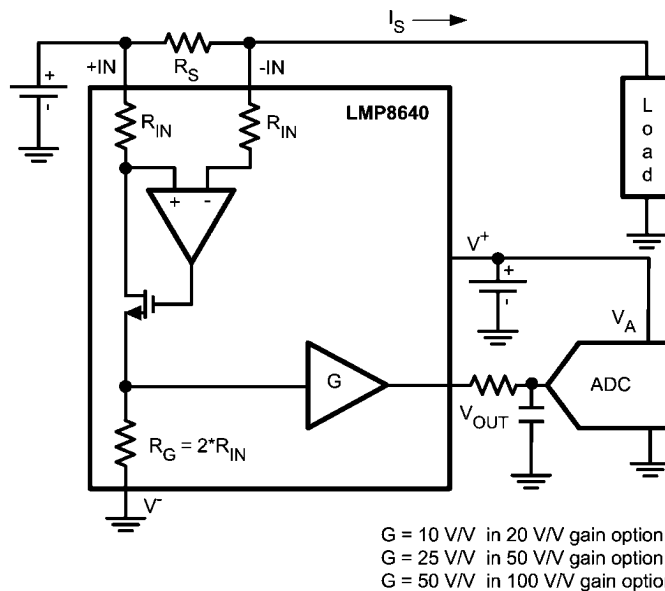
Typical values,  $T_A = 25^\circ\text{C}$

- High common-mode voltage range
  - LMP8640 -2V to 42V
  - LMP8640HV -2V to 76V
- Supply voltage range 2.7V to 12V
- Gain options 20V/V; 50V/V; 100V/V
- Max gain error 0.25%
- Low offset voltage 900 $\mu\text{V}$
- Input bias current 13  $\mu\text{A}$
- PSRR 85 dB
- CMRR (2.1V to 42V) 103 dB
- Temperature range -40°C to 125°C
- 6-Pin TSOT Package

### Applications

- High-side current sense
- Vehicle current measurement
- Motor controls
- Battery monitoring
- Remote sensing
- Power management

### Typical Application



30071462

## Absolute Maximum Ratings (Note 1)

If Military/Aerospace specified devices are required, please contact the National Semiconductor Sales Office/ Distributors for availability and specifications.

### ESD Tolerance (Note 2)

Human Body Model	
For input pins +IN, -IN	5000V
For all other pins	2000V
Machine Model	200V
Charge device model	1250V
Supply Voltage ( $V_S = V^+ - V^-$ )	13.2V
Differential Voltage +IN- (-IN)	6V
Voltage at pins +IN, -IN	
LMP8640HV	-6V to 80V

LMP8640	-6V to 60V
Voltage at $V_{OUT}$ pin	$V^-$ to $V^+$
Storage Temperature Range	-65°C to 150°C
Junction Temperature (Note 3)	150°C
For soldering specifications,	
see product folder at <a href="http://www.national.com">www.national.com</a> and	
<a href="http://www.national.com/ms/MS/MS-SOLDERING.pdf">www.national.com/ms/MS/MS-SOLDERING.pdf</a>	

## Operating Ratings (Note 1)

Supply Voltage ( $V_S = V^+ - V^-$ )	2.7V to 12V
Temperature Range (Note 3)	-40°C to 125°C
Package Thermal Resistance (Note 3)	
TSOT-6	96°C/W

## 2.7V Electrical Characteristics (Note 4)

Unless otherwise specified, all limits guaranteed for at  $T_A = 25^\circ\text{C}$ ,  $V_S = V^+ - V^-$ ,  $V_{SENSE} = +IN(-IN)$ ,  $V^+ = 2.7V$ ,  $V^- = 0V$ ,  $-2V < V_{CM} < 76V$ ,  $R_L = 10M\Omega$ . **Boldface** limits apply at the temperature extremes.

Symbol	Parameter	Condition	Min (Note 6)	Typ (Note 5)	Max (Note 6)	Units
$V_{OS}$	Input Offset Voltage	$V_{CM} = 2.1V$	-900 <b>-1160</b>		900 <b>1160</b>	$\mu V$
$TCV_{OS}$	Input Offset Voltage Drift (Note 7, Note 9)	$V_{CM} = 2.1V$			2.6	$\mu V/^\circ\text{C}$
$I_B$	Input Bias Current (Note 10)	$V_{CM} = 2.1V$		12	20 <b>27</b>	$\mu A$
$e_{ni}$	Input Voltage Noise (Note 9)	$f > 10\text{ kHz}$		117		$nV/\sqrt{\text{Hz}}$
Gain $A_V$	Fixed Gain LMP8640-T LMP8640HV-T			20		V/V
	Fixed Gain LMP8640-F LMP8640HV-F			50		V/V
	Fixed Gain LMP8640-H LMP8640HV-H			100		V/V
	Gain error	$V_{CM} = 2.1V$	-0.25 <b>-0.51</b>		0.25 <b>0.51</b>	%
	Accuracy over temperature (Note 9)	$-40^\circ\text{C}$ to $125^\circ\text{C}$ , $V_{CM} = 2.1V$			26.2	ppm/ $^\circ\text{C}$
PSRR	Power Supply Rejection Ratio	$V_{CM} = 2.1V$ , $2.7V < V^+ < 12V$ ,	85			dB
CMRR	Common Mode Rejection Ratio	LMP8640HV $2.1V < V_{CM} < 42V$	103			dB
		LMP8640 $2.1V < V_{CM} < 42V$				
		LMP8640HV $2.1V < V_{CM} < 76V$	95			
		$-2V < V_{CM} < 2V$ ,	60			
BW	Fixed Gain LMP8640-T LMP8640HV-T (Note 9)	DC $V_{SENSE} = 67.5\text{ mV}$ , $C_L = 30\text{ pF}$ , $R_L = 1M\Omega$		950		kHz
	Fixed Gain LMP8640-F LMP8640HV-F (Note 9)	DC $V_{SENSE} = 27\text{ mV}$ , $C_L = 30\text{ pF}$ , $R_L = 1M\Omega$		450		
	Fixed Gain LMP8640-H LMP8640HV-H (Note 9)	DC $V_{SENSE} = 13.5\text{ mV}$ , $C_L = 30\text{ pF}$ , $R_L = 1M\Omega$		230		
SR	Slew Rate (Note 8, Note 9)	$V_{CM} = 5V$ , $C_L = 30\text{ pF}$ , $R_L = 1M\Omega$ , LMP8640-T LMP8640HV-T $V_{SENSE} = 100\text{mVpp}$ , LMP8640-F LMP8640HV-F $V_{SENSE} = 40\text{mVpp}$ , LMP8640-H LMP8640HV-H $V_{SENSE} = 20\text{mVpp}$ ,		1.4		V/ $\mu s$

Symbol	Parameter	Condition	Min (Note 6)	Typ (Note 5)	Max (Note 6)	Units
$R_{IN}$	Differential Mode Input Impedance (Note 9)			5		$k\Omega$
$I_S$	Supply Current	$V_{CM} = 2.1V$		420	600 <b>800</b>	$\mu A$
		$V_{CM} = -2V$		2000	2500 <b>2750</b>	
$V_{OUT}$	Maximum Output Voltage	$V_{CM} = 2.1V$	2.65			V
	Minimum Output Voltage	LMP8640-T LMP8640HV-T $V_{CM} = 2.1V$			18.2	mV
		LMP8640-F LMP8640HV-F $V_{CM} = 2.1V$			40	
		LMP8640-H LMP8640HV-H $V_{CM} = 2.1V$			80	
$C_{LOAD}$	Max Output Capacitance Load (Note 9)			30		pF

## 5V Electrical Characteristics (Note 4)

Unless otherwise specified, all limits guaranteed for at  $T_A = 25^\circ C$ ,  $V_S = V^+ - V^-$ ,  $V_{SENSE} = +IN - (-IN)$ ,  $V^+ = 5V$ ,  $V^- = 0V$ ,  $-2V < V_{CM} < 76V$ ,  $R_L = 10M\Omega$ . **Boldface** limits apply at the temperature extremes.

Symbol	Parameter	Condition	Min (Note 6)	Typ (Note 5)	Max (Note 6)	Units
$V_{OS}$	Input Offset Voltage	$V_{CM} = 2.1V$	-900 <b>-1160</b>		900 <b>1160</b>	$\mu V$
$TCV_{OS}$	Input Offset Voltage Drift (Note 7, Note 9)	$V_{CM} = 2.1V$			2.6	$\mu V/^\circ C$
$I_B$	Input Bias Current (Note 10)	$V_{CM} = 2.1V$		13	21 <b>28</b>	$\mu A$
$e_{ni}$	Input Voltage Noise (Note 9)	$f > 10 kHz$		117		$nV/\sqrt{Hz}$
Gain $A_v$	Fixed Gain LMP8640-T LMP8640HV-T			20		V/V
	Fixed Gain LMP8640-F LMP8640HV-F			50		V/V
	Fixed Gain LMP8640-H LMP8640HV-H			100		V/V
	Gain error	$V_{CM} = 2.1V$	-0.25 <b>-0.51</b>		0.25 <b>0.51</b>	%
	Accuracy over temperature (Note 9)	$-40^\circ C$ to $125^\circ C$ , $V_{CM} = 2.1V$			26.2	ppm/ $^\circ C$
PSRR	Power Supply Rejection Ratio	$V_{CM} = 2.1V$ , $2.7V < V^+ < 12V$ ,	85			dB
CMRR	Common Mode Rejection Ratio	LMP8640HV $2.1V < V_{CM} < 42V$	103			dB
		LMP8640 $2.1V < V_{CM} < 42V$				
		LMP8640HV $2.1V < V_{CM} < 76V$	95			
		$-2V < V_{CM} < 2V$ ,	60			
BW	Fixed Gain LMP8640-T LMP8640HV-T (Note 9)	DC $V_{SENSE} = 67.5 mV$ , $C_L = 30 pF$ , $R_L = 1M\Omega$		950		kHz
	Fixed Gain LMP8640-F LMP8640HV-F (Note 9)	DC $V_{SENSE} = 27 mV$ , $C_L = 30 pF$ , $R_L = 1M\Omega$		450		
	Fixed Gain LMP8640-H LMP8640HV-H (Note 9)	DC $V_{SENSE} = 13.5 mV$ , $C_L = 30 pF$ , $R_L = 1M\Omega$		230		

Symbol	Parameter	Condition	Min (Note 6)	Typ (Note 5)	Max (Note 6)	Units
SR	Slew Rate (Note 8, Note 9)	$V_{CM} = 5V$ , $C_L = 30\text{ pF}$ , $R_L = 1M\Omega$ , LMP8640-T LMP8640HV-T $V_{SENSE} = 200mV_{pp}$ , LMP8640-F LMP8640HV-F $V_{SENSE} = 80mV_{pp}$ , LMP8640-H LMP8640HV-H $V_{SENSE} = 40mV_{pp}$ ,		1.6		V/ $\mu$ s
$R_{IN}$	Differential Mode Input Impedance (Note 9)			5		k $\Omega$
$I_S$	Supply Current	$V_{CM} = 2.1V$		500	722 <b>922</b>	$\mu$ A
		$V_{CM} = -2V$		2050	2500 <b>2750</b>	
$V_{OUT}$	Maximum Output Voltage	$V_{CM} = 2.1V$	4.95			V
	Minimum Output Voltage	LMP8640-T LMP8640HV-T $V_{CM} = 2.1V$			18.2	mV
		LMP8640-F LMP8640HV-F $V_{CM} = 2.1V$			40	
		LMP8640-H LMP8640HV-H $V_{CM} = 2.1V$			80	
$C_{LOAD}$	Max Output Capacitance Load (Note 9)			30		pF

## 12V Electrical Characteristics (Note 4)

Unless otherwise specified, all limits guaranteed for at  $T_A = 25^\circ\text{C}$ ,  $V_S = V^+ - V^-$ ,  $V_{SENSE} = +IN - (-IN)$ ,  $V^+ = 12V$ ,  $V^- = 0V$ ,  $-2V < V_{CM} < 76V$ ,  $R_L = 10M\Omega$ . **Boldface** limits apply at the temperature extremes.

Symbol	Parameter	Condition	Min (Note 6)	Typ (Note 5)	Max (Note 6)	Units
$V_{OS}$	Input Offset Voltage	$V_{CM} = 2.1V$	-900 <b>-1160</b>		900 <b>1160</b>	$\mu$ V
$TCV_{OS}$	Input Offset Voltage Drift (Note 7, Note 9)	$V_{CM} = 2.1V$			2.6	$\mu$ V/ $^\circ\text{C}$
$I_B$	Input Bias Current (Note 10)	$V_{CM} = 2.1V$		13	22 <b>28</b>	$\mu$ A
$e_{ni}$	Input Voltage Noise (Note 9)	$f > 10\text{ kHz}$		117		nV/ $\sqrt{\text{Hz}}$
Gain $A_V$	Fixed Gain LMP8640-T LMP8640HV-T			20		V/V
	Fixed Gain LMP8640-F LMP8640HV-F			50		V/V
	Fixed Gain LMP8640-H LMP8640HV-H			100		V/V
	Gain error	$V_{CM} = 2.1V$	-0.25 <b>-0.51</b>		0.25 <b>0.51</b>	%
	Accuracy over temperature (Note 9)	$-40^\circ\text{C}$ to $125^\circ\text{C}$ , $V_{CM} = 2.1V$			26.2	ppm/ $^\circ\text{C}$
PSRR	Power Supply Rejection Ratio	$V_{CM} = 2.1V$ , $2.7V < V^+ < 12V$ ,	85			dB
CMRR	Common Mode Rejection Ratio	LMP8640HV $2.1V < V_{CM} < 42V$ LMP8640 $2.1V < V_{CM} < 42V$	103			dB
		LMP8640HV $2.1V < V_{CM} < 76V$	95			
		$-2V < V_{CM} < 2V$ ,	60			

Symbol	Parameter	Condition	Min (Note 6)	Typ (Note 5)	Max (Note 6)	Units
BW	Fixed Gain LMP8640-T LMP8640HV-T (Note 9)	DC $V_{SENSE} = 67.5 \text{ mV}$ , $C_L = 30 \text{ pF}$ , $R_L = 1 \text{ M}\Omega$		950		kHz
	Fixed Gain LMP8640-F LMP8640HV-F (Note 9)	DC $V_{SENSE} = 27 \text{ mV}$ , $C_L = 30 \text{ pF}$ , $R_L = 1 \text{ M}\Omega$		450		
	Fixed Gain LMP8640-H LMP8640HV-H (Note 9)	DC $V_{SENSE} = 13.5 \text{ mV}$ , $C_L = 30 \text{ pF}$ , $R_L = 1 \text{ M}\Omega$		230		
SR	Slew Rate (Note 8, Note 9)	$V_{CM} = 5 \text{ V}$ , $C_L = 30 \text{ pF}$ , $R_L = 1 \text{ M}\Omega$ , LMP8640-T LMP8640HV-T $V_{SENSE} = 500 \text{ mVpp}$ , LMP8640-F LMP8640HV-F $V_{SENSE} = 200 \text{ mVpp}$ , LMP8640-H LMP8640HV-H $V_{SENSE} = 100 \text{ mVpp}$ ,		1.8		V/ $\mu\text{s}$
$R_{IN}$	Differential Mode Input Impedance (Note 9)			5		k $\Omega$
$I_S$	Supply Current	$V_{CM} = 2.1 \text{ V}$		720	1050 <b>1250</b>	$\mu\text{A}$
		$V_{CM} = -2 \text{ V}$		2300	2800 <b>3000</b>	
$V_{OUT}$	Maximum Output Voltage	$V_{CM} = 2.1 \text{ V}$	11.85			V
	Minimum Output Voltage	LMP8640-T LMP8640HV-T $V_{CM} = 2.1 \text{ V}$			18.2	mV
		LMP8640-F LMP8640HV-F $V_{CM} = 2.1 \text{ V}$			40	
		LMP8640-H LMP8640HV-H $V_{CM} = 2.1 \text{ V}$			80	
$C_{LOAD}$	Max Output Capacitance Load (Note 9)			30		pF

**Note 1:** "Absolute Maximum Ratings" indicate limits beyond which damage to the device may occur, including inoperability and degradation of device reliability and/or performance. Functional operation of the device and/or non-degradation at the Absolute Maximum Ratings or other conditions beyond those indicated in the Operating Ratings is not implied. Operating Ratings indicate conditions at which the device is functional and the device should not be operated beyond such conditions.

**Note 2:** Human Body Model, applicable std. MIL-STD-883, Method 3015.7. Machine Model, applicable std. JESD22-A115-A (ESD MM std. of JEDEC) Field-Induced Charge-Device Model, applicable std. JESD22-C101-C (ESD FICDM std. of JEDEC).

**Note 3:** The maximum power dissipation must be derated at elevated temperatures and is dictated by  $T_{J(MAX)}$ ,  $\theta_{JA}$ , and the ambient temperature,  $T_A$ . The maximum allowable power dissipation  $P_{DMAX} = (T_{J(MAX)} - T_A) / \theta_{JA}$  or the number given in Absolute Maximum Ratings, whichever is lower.

**Note 4:** Electrical Table values apply only for factory testing conditions at the temperature indicated. Factory testing conditions result in very limited self-heating of the device such that  $T_J = T_A$ . No guarantee of parametric performance is indicated in the electrical tables under conditions of internal self-heating where  $T_J > T_A$ . Absolute Maximum Ratings indicate junction temperature limits beyond which the device may be permanently degraded, either mechanically or electrically.

**Note 5:** Typical values represent the most likely parametric norm at the time of characterization. Actual typical values may vary over time and will also depend on the application and configuration. The typical values are not tested and are not guaranteed on shipped production material.

**Note 6:** Limits are 100% production tested at 25°C. Limits over the operating temperature range are guaranteed through correlations using statistical quality control (SQC) method.

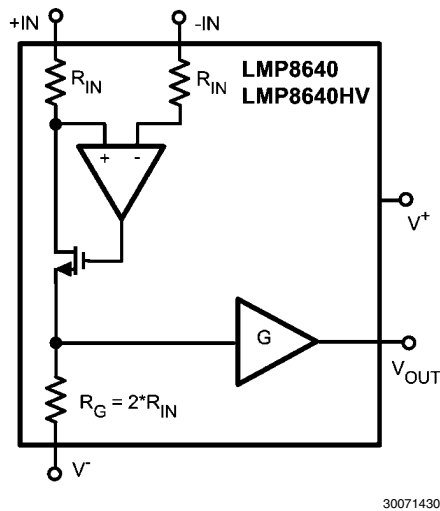
**Note 7:** Offset voltage temperature drift is determined by dividing the change in  $V_{OS}$  at the temperature extremes by the total temperature change.

**Note 8:** The number specified is the average of rising and falling slew rates and measured at 90% to 10%.

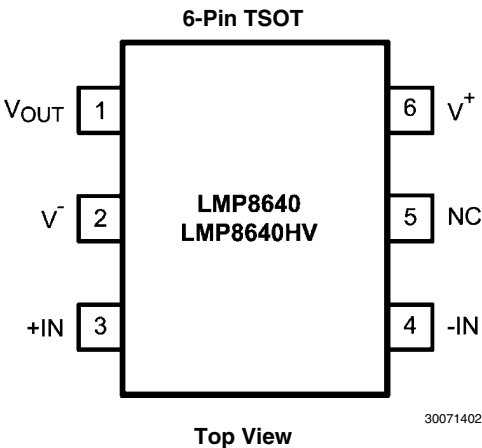
**Note 9:** This parameter is guaranteed by design and/or characterization and is not tested in production.

**Note 10:** Positive Bias Current corresponds to current flowing into the device.

Block Diagram



Connection Diagram



Pin Descriptions

Pin	Name	Description
1	$V_{OUT}$	Single Ended Output
2	$V^-$	Negative Supply Voltage
3	$+IN$	Positive Input
4	$-IN$	Negative Input
5	NC	Not Connected
6	$V^+$	Positive Supply Voltage

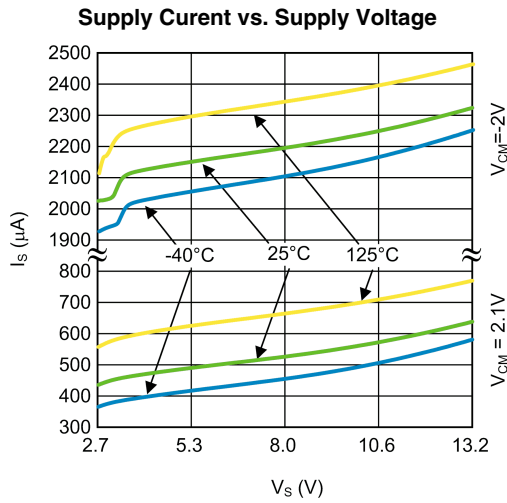
## Ordering Information

Package	Gain	Part Number	Package Marking	Transport Media	NSC Drawing
6-Pin TSOT	20V/V	LMP8640MK-T	AA6A	1k Units Tape and Reel	MK06A
		LMP8640MKE-T		250 Units Tape and Reel	
		LMP8640MKX-T		3k Units Tape and Reel	
		LMP8640HVMK-T	AB6A	1k Units Tape and Reel	
		LMP8640HVMKE-T		250 Units Tape and Reel	
		LMP8640HVMKX-T		3k Units Tape and Reel	
6-Pin TSOT	50V/V	LMP8640MK-F	AC6A	1k Units Tape and Reel	MK06A
		LMP8640MKE-F		250 Units Tape and Reel	
		LMP8640MKX-F		3k Units Tape and Reel	
		LMP8640HVMK-F	AD6A	1k Units Tape and Reel	
		LMP8640HVMKE-F		250 Units Tape and Reel	
		LMP8640HVMKX-F		3k Units Tape and Reel	
6-Pin TSOT	100V/V	LMP8640MK-H	AE6A	1k Units Tape and Reel	MK06A
		LMP8640MKE-H		250 Units Tape and Reel	
		LMP8640MKX-H		3k Units Tape and Reel	
		LMP8640HVMK-H	AF6A	1k Units Tape and Reel	
		LMP8640HVMKE-H		250 Units Tape and Reel	
		LMP8640HVMKX-H		3k Units Tape and Reel	

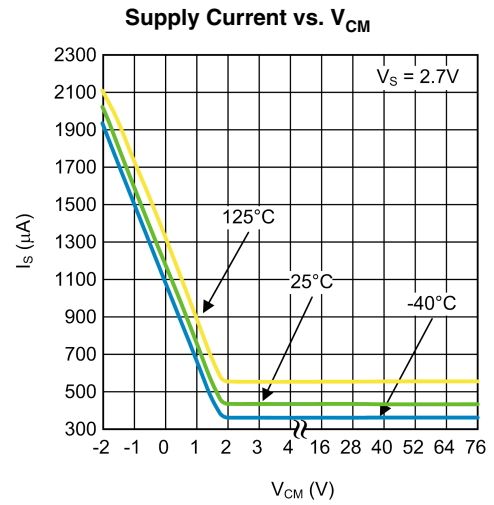
## Typical Performance Characteristics

(-IN),  $R_L = 10\text{ M}\Omega$ .

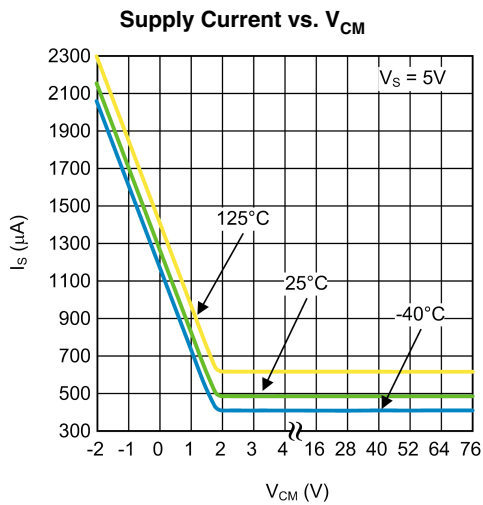
Unless otherwise specified:  $T_A = 25^\circ\text{C}$ ,  $V_S = V^+ - V^-$ ,  $V_{\text{SENSE}} = +\text{IN} -$



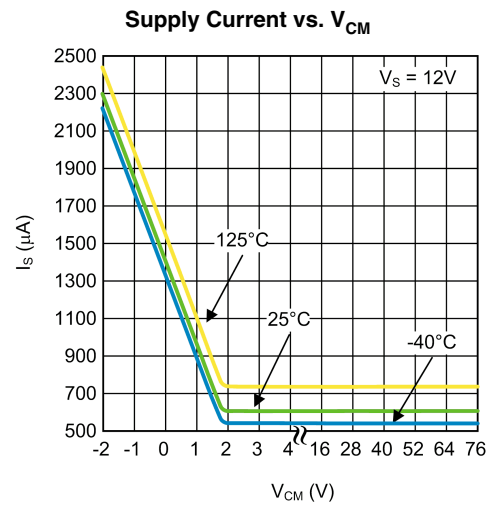
30071425



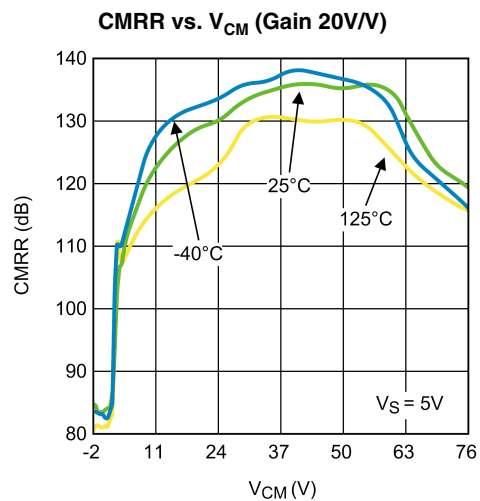
30071426



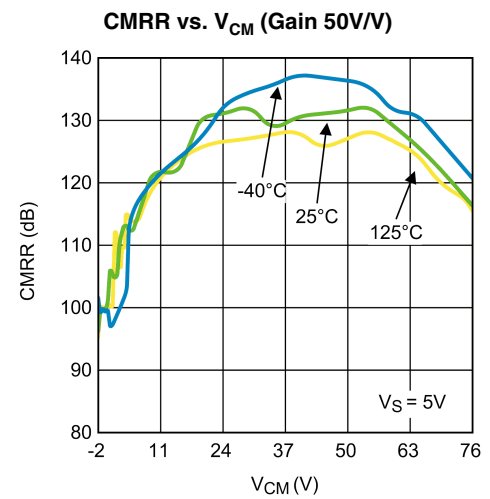
30071427



30071428

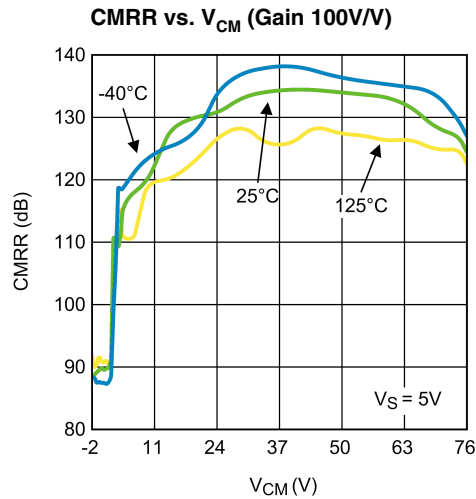


30071422

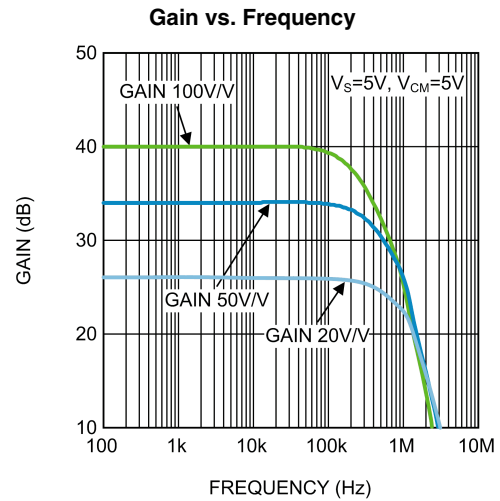


30071423

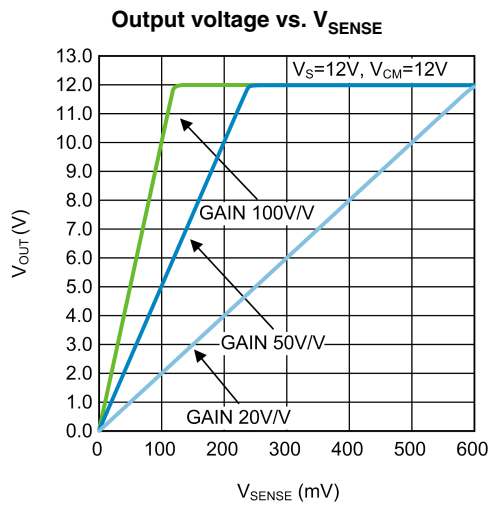




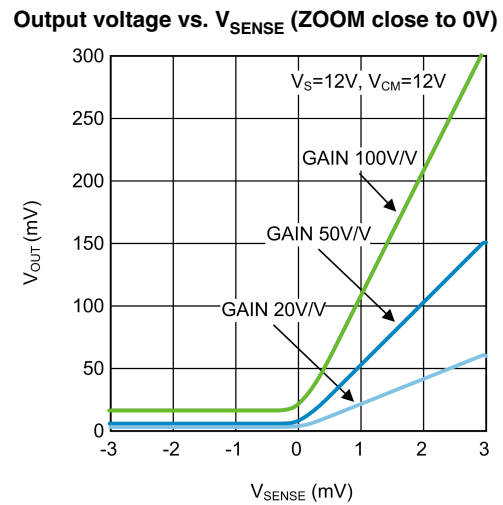
30071424



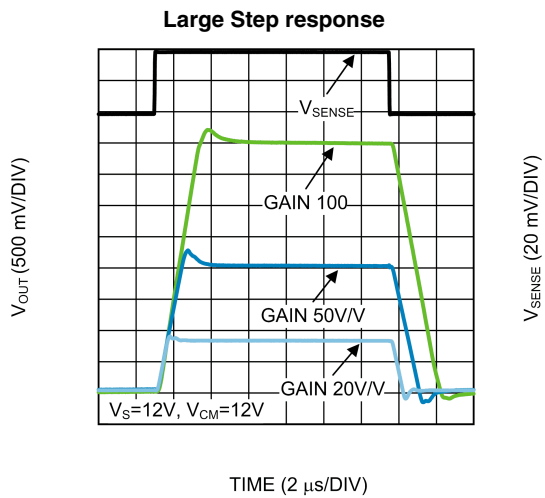
30071414



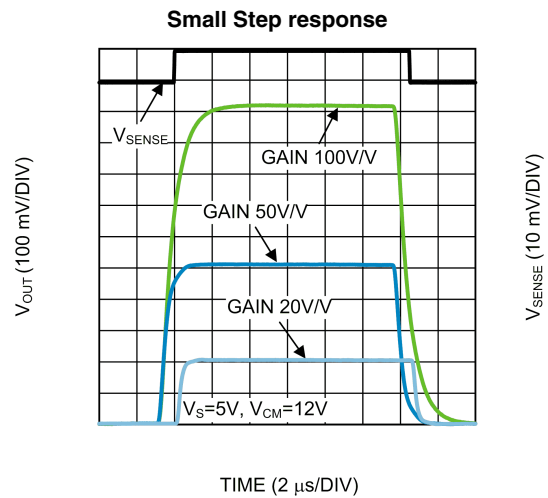
30071416



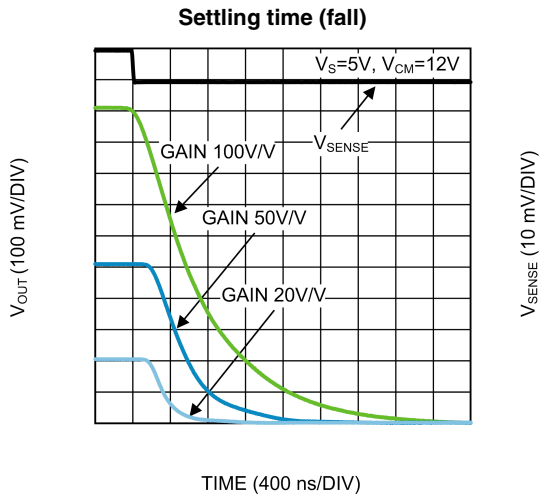
30071417



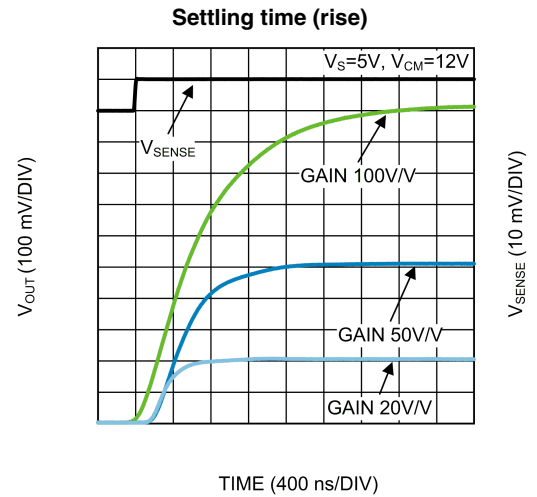
30071418



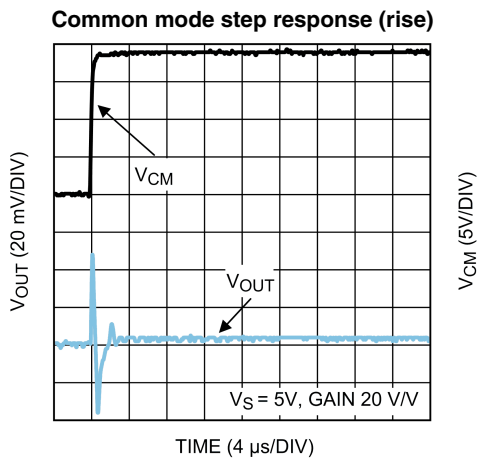
30071419



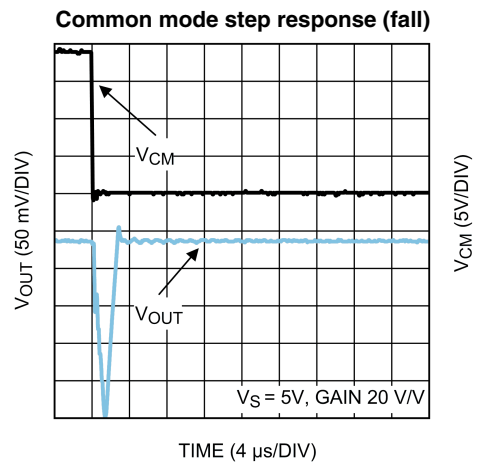
30071420



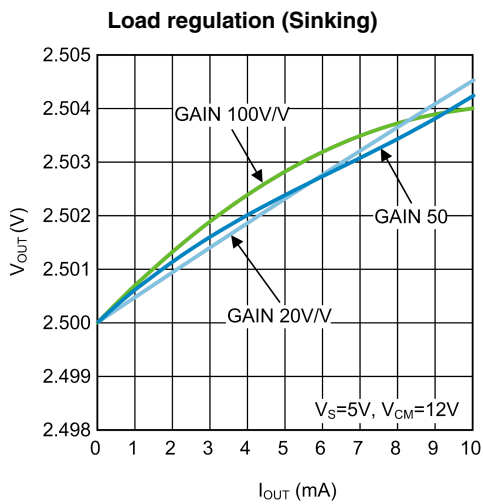
30071421



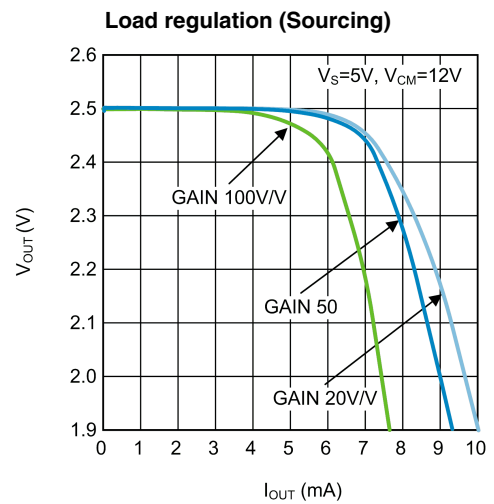
30071411



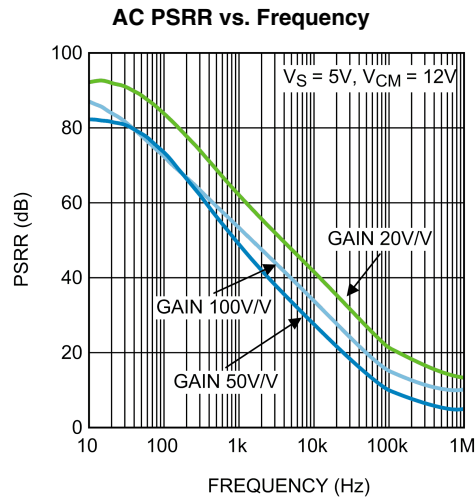
30071410



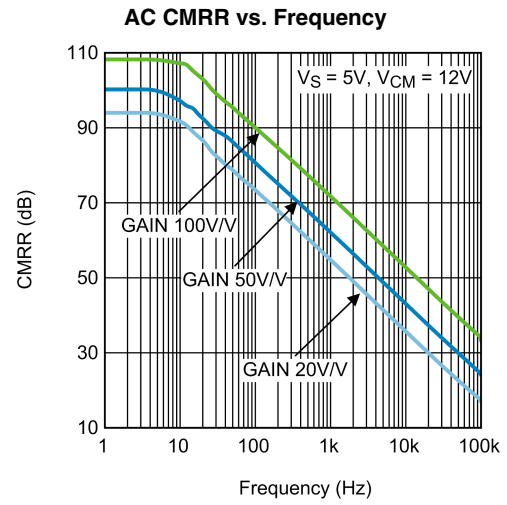
30071432



30071431



30071412



30071413

## Application Information

### GENERAL

The LMP8640 and LMP8640HV are single supply high side current sense amplifiers with a fixed gain of 20V/V, 50V/V, 100V/V and a common mode voltage range of -2V to 42V or -2V to 76V depending on the grade.

### THEORY OF OPERATION

As seen from the picture below, the current flowing through  $R_S$  develops a voltage drop equal to  $V_{SENSE}$  across  $R_S$ . The high impedance inputs of the amplifier doesn't conduct this current and the high open loop gain of the sense amplifier forces its non-inverting input to the same voltage as the inverting input. In this way the voltage drop across  $R_{IN}$  matches  $V_{SENSE}$ . A current proportional to  $I_S$  according to the following relation:

$$I_G = V_{SENSE}/R_{IN} = R_S * I_S / R_{IN}$$

flows entirely in the internal gain resistor  $R_G$  developing a voltage drop equal to

$$V_{RG} = I_G * R_G = (V_{SENSE}/R_{IN}) * R_G = ((R_S * I_S)/R_{IN}) * R_G$$

This voltage is buffered and showed at the output with a very low impedance allowing a very easy interface of the LMP8640 with other ICs (ADC,  $\mu C...$ ).

$$V_{OUT} = 2 * (R_S * I_S) * G,$$

where  $G = R_G/R_{IN} = 10V/V, 25V/V, 50V/V$ , according to the gain options.

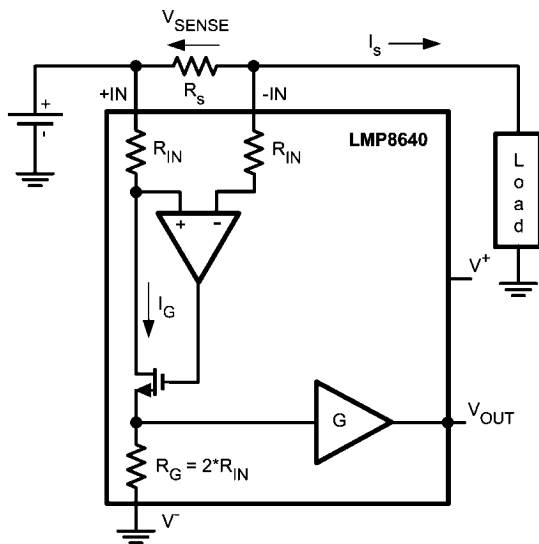


FIGURE 1. Current monitor

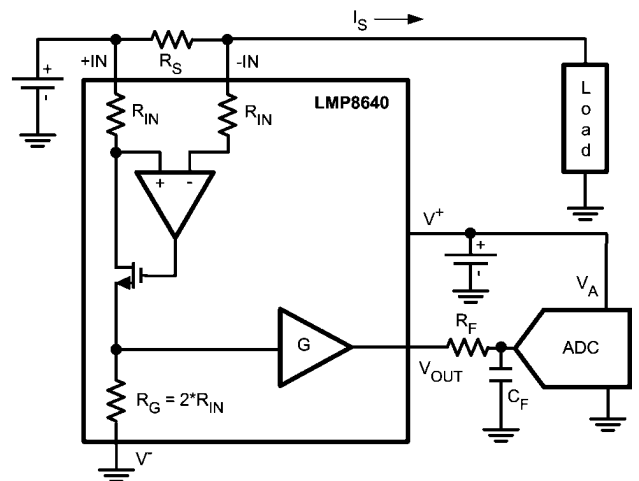
### SELECTION OF THE SHUNT RESISTOR

The value chosen for the shunt resistor,  $R_S$ , depends on the application. It plays a big role in a current sensing system and must be chosen with care. The selection of the shunt resistor needs to take in account the small-signal accuracy, the power dissipated and the voltage loss across the shunt itself. In applications where a small current is sensed, a bigger value of  $R_S$  is selected to minimize the error in the proportional output voltage. Higher resistor value improves the SNR at the input of the current sense amplifier and hence gives an accurate output. Similarly when high current is sensed, the power losses in  $R_S$  can be significant so a smaller value of  $R_S$  is sug-

gested. In this condition is required to take in account also the power rating of  $R_S$  resistor. The low input offset of the LMP8640 allows the use of small sense resistors to reduce power dissipation still providing a good input dynamic range. The input dynamic range is the ratio expressed in dB between the maximum signal that can be measured and the minimum signal that can be detected, usually the input offset is the principal limiting factor.

### DRIVING ADC

The input stage of an Analog to Digital converter can be modelled with a resistor and a capacitance versus ground. So if the voltage source doesn't have a low impedance an error in the amplitude's measurement will occur. In this case a buffer is needed to drive the ADC. The LMP8640 has an internal output buffer able to drive a capacitance load up to 30 pF or the input stage of an ADC. If required an external low pass RC filter can be added at the output of the LMP8640 to reduce the noise and the bandwidth of the current sense.



30071461

FIGURE 2. LMP8640 to ADC interface

### DESIGN EXAMPLE

For example in a current monitor application is required to measure the current sunk by a load (peak current 10A) with a resolution of 10mA and 0.5% of accuracy. The 10bit analog to digital converter accepts a max input voltage of 4.1V. Moreover in order to not burn much power on the shunt resistor it needs to be less than 10m $\Omega$ . In the table below are summarized the other working condition.

Working Condition	Value	
	Min	Max
Supply Voltage	5V	5.5V
Common mode Voltage	48V	70V
Temperature	0°C	70°C
Signal BW		50kHz

#### First step – LMP8640 / LMP8640HV selection

The required common mode voltage of the application implies that the right choice is the LMP8640HV (High common mode voltage up to 76V).

#### Second step – Gain option selection

We can choose between three gain option (20V/V, 50V/V, 100V/V). considering the max input voltage of the ADC

(4.1V) , the max Sense voltage across the shunt resistor is evaluated according the following formula:

$$V_{\text{SENSE}} = (\text{MAX Vin ADC}) / \text{Gain};$$

hence the max  $V_{\text{SENSE}}$  will be 205mV, 82mV, 41mV respectively. The shunt resistor are then evaluated considering the maximum monitored current :

$$R_S = (\text{max } V_{\text{SENSE}}) / I_{\text{MAX}}$$

For each gain option the max shunt resistors are the following : 20.5m $\Omega$ , 8.2m $\Omega$ , 4.1m $\Omega$  respectively.

One of the project constraints requires  $R_S < 10\text{m}\Omega$ , it means that the 20.5m $\Omega$  will be discarded and hence the 50V/V and 100V/V gain options are still in play.

### Third step – Shunt resistor selection

At this point an error budget calculation, considering the calibration of the Gain, Offset, CMRR, and PSRR, helps in the selection of the shunt resistor. In the table below the contribution of each error source is calculated considering the values of the EC Table at 5V supply.

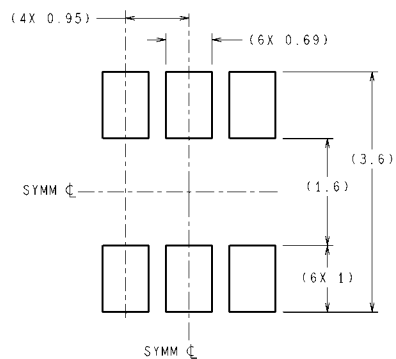
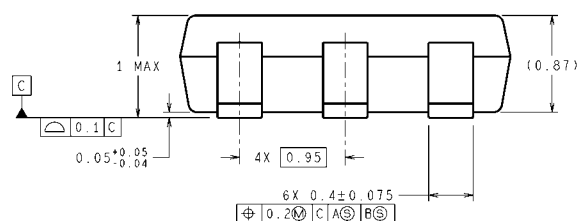
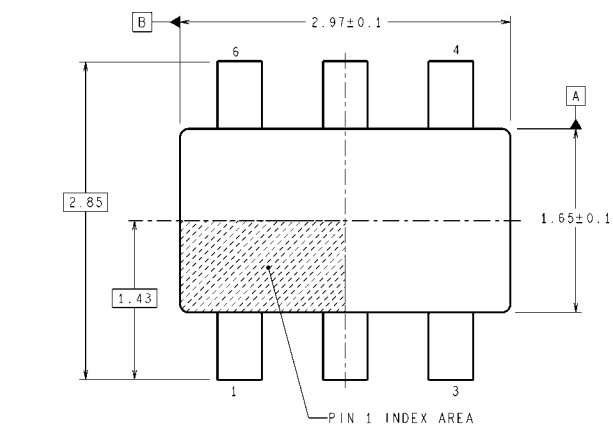
### Resolution Calculation

ERROR SOURCE	Rs=4.1m $\Omega$	Rs=8.1m $\Omega$
CMRR calibrated ad mid VCM range	77.9 $\mu$ V	77.9 $\mu$ V
PSRR calibrated at 5V	8.9 $\mu$ V	8.9 $\mu$ V
Total error (squared sum of contribution)	78 $\mu$ V	78 $\mu$ V
<b>Resolution</b> (Total error / $R_S$ )	19.2mA	9.6mA

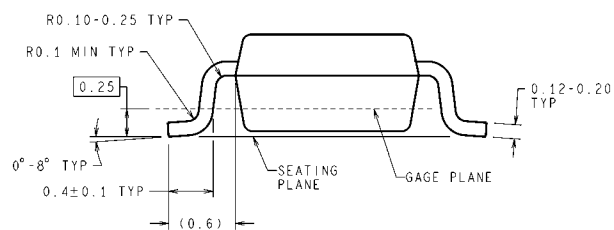
### Accuracy Calculation

ERROR SOURCE	Rs=4.1m $\Omega$	Rs=8.1m $\Omega$
Tc Vos	182 $\mu$ V	182 $\mu$ V
Nosie	216 $\mu$ V	216 $\mu$ V
Gain drift	75.2 $\mu$ V	151 $\mu$ V
Total error (squared sum of contribution)	293 $\mu$ V	320 $\mu$ V
<b>Accuracy</b> 100*(Max_ $V_{\text{SENSE}}$ / Total Error)	0.7%	0.4%

From the tables above is clear that the 8.2m $\Omega$  shunt resistor allows the respect of the project's constraints. The power burned on the Shunt is 820mW at 10A.

**Physical Dimensions** inches (millimeters) unless otherwise noted

### RECOMMENDED LAND PATTERN



DIMENSIONS ARE IN MILLIMETERS

MK06A (Rev E)

**TSOT-6**  
**NS Package Number MK06A**

## Notes

## Notes

For more National Semiconductor product information and proven design tools, visit the following Web sites at:  
[www.national.com](http://www.national.com)

Products		Design Support	
Amplifiers	<a href="http://www.national.com/amplifiers">www.national.com/amplifiers</a>	WEBENCH® Tools	<a href="http://www.national.com/webench">www.national.com/webench</a>
Audio	<a href="http://www.national.com/audio">www.national.com/audio</a>	App Notes	<a href="http://www.national.com/appnotes">www.national.com/appnotes</a>
Clock and Timing	<a href="http://www.national.com/timing">www.national.com/timing</a>	Reference Designs	<a href="http://www.national.com/refdesigns">www.national.com/refdesigns</a>
Data Converters	<a href="http://www.national.com/adc">www.national.com/adc</a>	Samples	<a href="http://www.national.com/samples">www.national.com/samples</a>
Interface	<a href="http://www.national.com/interface">www.national.com/interface</a>	Eval Boards	<a href="http://www.national.com/evalboards">www.national.com/evalboards</a>
LVDS	<a href="http://www.national.com/lvds">www.national.com/lvds</a>	Packaging	<a href="http://www.national.com/packaging">www.national.com/packaging</a>
Power Management	<a href="http://www.national.com/power">www.national.com/power</a>	Green Compliance	<a href="http://www.national.com/quality/green">www.national.com/quality/green</a>
Switching Regulators	<a href="http://www.national.com/switchers">www.national.com/switchers</a>	Distributors	<a href="http://www.national.com/contacts">www.national.com/contacts</a>
LDOs	<a href="http://www.national.com/ldo">www.national.com/ldo</a>	Quality and Reliability	<a href="http://www.national.com/quality">www.national.com/quality</a>
LED Lighting	<a href="http://www.national.com/led">www.national.com/led</a>	Feedback/Support	<a href="http://www.national.com/feedback">www.national.com/feedback</a>
Voltage References	<a href="http://www.national.com/vref">www.national.com/vref</a>	Design Made Easy	<a href="http://www.national.com/easy">www.national.com/easy</a>
PowerWise® Solutions	<a href="http://www.national.com/powerwise">www.national.com/powerwise</a>	Applications & Markets	<a href="http://www.national.com/solutions">www.national.com/solutions</a>
Serial Digital Interface (SDI)	<a href="http://www.national.com/sdi">www.national.com/sdi</a>	Mil/Aero	<a href="http://www.national.com/milaero">www.national.com/milaero</a>
Temperature Sensors	<a href="http://www.national.com/tempsensors">www.national.com/tempsensors</a>	SolarMagic™	<a href="http://www.national.com/solarmagic">www.national.com/solarmagic</a>
PLL/VCO	<a href="http://www.national.com/wireless">www.national.com/wireless</a>	PowerWise® Design University	<a href="http://www.national.com/training">www.national.com/training</a>

THE CONTENTS OF THIS DOCUMENT ARE PROVIDED IN CONNECTION WITH NATIONAL SEMICONDUCTOR CORPORATION ("NATIONAL") PRODUCTS. NATIONAL MAKES NO REPRESENTATIONS OR WARRANTIES WITH RESPECT TO THE ACCURACY OR COMPLETENESS OF THE CONTENTS OF THIS PUBLICATION AND RESERVES THE RIGHT TO MAKE CHANGES TO SPECIFICATIONS AND PRODUCT DESCRIPTIONS AT ANY TIME WITHOUT NOTICE. NO LICENSE, WHETHER EXPRESS, IMPLIED, ARISING BY ESTOPPEL OR OTHERWISE, TO ANY INTELLECTUAL PROPERTY RIGHTS IS GRANTED BY THIS DOCUMENT.

TESTING AND OTHER QUALITY CONTROLS ARE USED TO THE EXTENT NATIONAL DEEMS NECESSARY TO SUPPORT NATIONAL'S PRODUCT WARRANTY. EXCEPT WHERE MANDATED BY GOVERNMENT REQUIREMENTS, TESTING OF ALL PARAMETERS OF EACH PRODUCT IS NOT NECESSARILY PERFORMED. NATIONAL ASSUMES NO LIABILITY FOR APPLICATIONS ASSISTANCE OR BUYER PRODUCT DESIGN. BUYERS ARE RESPONSIBLE FOR THEIR PRODUCTS AND APPLICATIONS USING NATIONAL COMPONENTS. PRIOR TO USING OR DISTRIBUTING ANY PRODUCTS THAT INCLUDE NATIONAL COMPONENTS, BUYERS SHOULD PROVIDE ADEQUATE DESIGN, TESTING AND OPERATING SAFEGUARDS.

EXCEPT AS PROVIDED IN NATIONAL'S TERMS AND CONDITIONS OF SALE FOR SUCH PRODUCTS, NATIONAL ASSUMES NO LIABILITY WHATSOEVER, AND NATIONAL DISCLAIMS ANY EXPRESS OR IMPLIED WARRANTY RELATING TO THE SALE AND/OR USE OF NATIONAL PRODUCTS INCLUDING LIABILITY OR WARRANTIES RELATING TO FITNESS FOR A PARTICULAR PURPOSE, MERCHANTABILITY, OR INFRINGEMENT OF ANY PATENT, COPYRIGHT OR OTHER INTELLECTUAL PROPERTY RIGHT.

### LIFE SUPPORT POLICY

**NATIONAL'S PRODUCTS ARE NOT AUTHORIZED FOR USE AS CRITICAL COMPONENTS IN LIFE SUPPORT DEVICES OR SYSTEMS WITHOUT THE EXPRESS PRIOR WRITTEN APPROVAL OF THE CHIEF EXECUTIVE OFFICER AND GENERAL COUNSEL OF NATIONAL SEMICONDUCTOR CORPORATION.** As used herein:

Life support devices or systems are devices which (a) are intended for surgical implant into the body, or (b) support or sustain life and whose failure to perform when properly used in accordance with instructions for use provided in the labeling can be reasonably expected to result in a significant injury to the user. A critical component is any component in a life support device or system whose failure to perform can be reasonably expected to cause the failure of the life support device or system or to affect its safety or effectiveness.

National Semiconductor and the National Semiconductor logo are registered trademarks of National Semiconductor Corporation. All other brand or product names may be trademarks or registered trademarks of their respective holders.

Copyright© 2010 National Semiconductor Corporation

For the most current product information visit us at [www.national.com](http://www.national.com)



**National Semiconductor  
Americas Technical  
Support Center**  
Email: [support@nsc.com](mailto:support@nsc.com)  
Tel: 1-800-272-9959

**National Semiconductor Europe  
Technical Support Center**  
Email: [europe.support@nsc.com](mailto:europe.support@nsc.com)

**National Semiconductor Asia  
Pacific Technical Support Center**  
Email: [ap.support@nsc.com](mailto:ap.support@nsc.com)

**National Semiconductor Japan  
Technical Support Center**  
Email: [jpn.feedback@nsc.com](mailto:jpn.feedback@nsc.com)