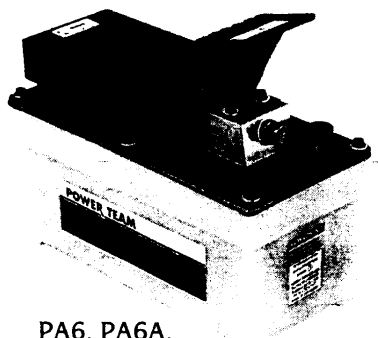
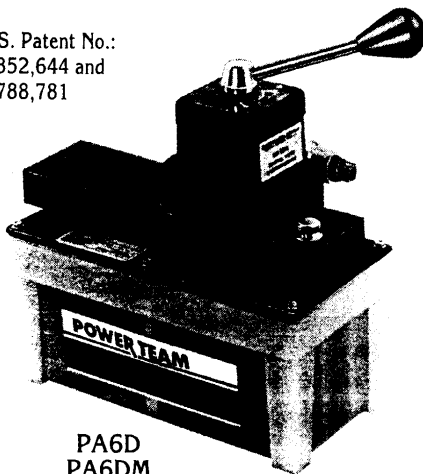


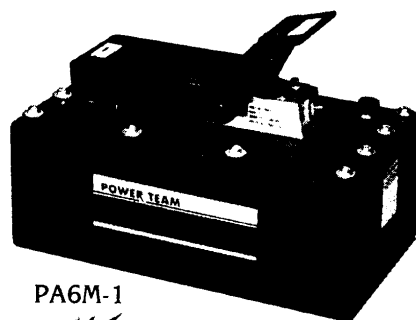
U.S. Patent No.:
4,352,644 and
3,788,781



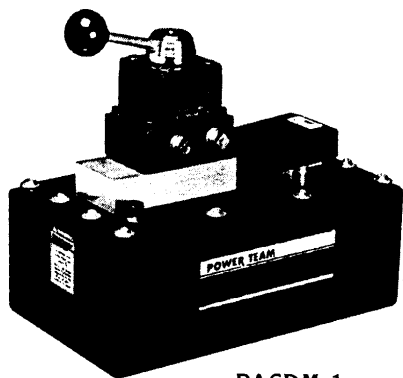
PA6, PA6A,
PA6M,
PA6AM



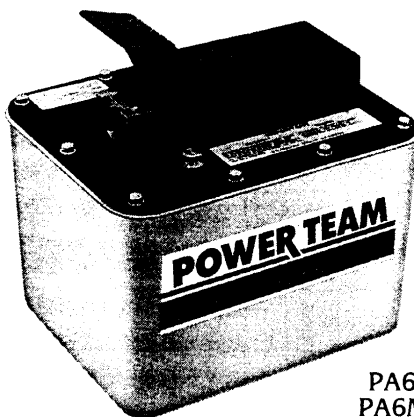
PA6D
PA6DM



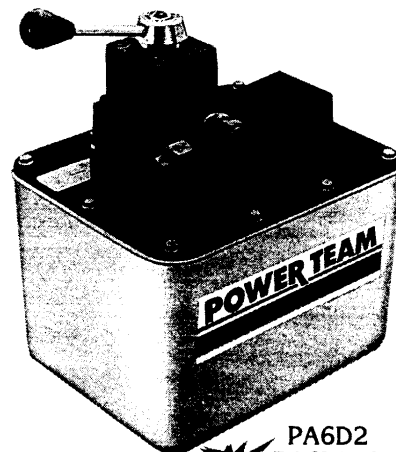
PA6M-1



PA6DM-1



PA6-2
PA6M-2



PA6D2
PA6DM-2

dBA 85 at 10,000 psi for all PA6 series pumps.

Pumps

Air/Hydraulic Pumps

These single-speed air/hydraulic pumps are compact, lightweight and portable.

Operate on shop air to drive single- or double-acting cylinders.

All pumps come with internal relief valves to protect circuit components.

Air inlet filter protects motor.

All metal air motor and ductile iron pump.

Permanently vented reservoir cap.

These air/hydraulic pumps operate on 40-120 psi shop air and offer greater speed at lower cost. These pumps offer reservoirs from 90 cu. in. usable oil up to the 2½ gallon reservoir for those multiple cylinder applications.

PA6, PA6M, PA6M-1, PA6-2, PA6M-2, PA6A and PA6AM single-speed pumps

PA6 – For use with single-acting cylinders operating at 10,000 PSI. Highly efficient air/hydraulic

power has release detent for cylinder return. High density polyethylene reservoir has 90 cu. in. of usable oil and pump requires 20 cfm at 100 psi air pressure at the pump.

PA6M – Same as PA6 except it has a metal reservoir.

PA6M-1 – Same as PA6 except it has a 1 gallon metal reservoir.

PA6-2 – Same as PA6 except it has a 2 gallon high density polyethylene reservoir.

PA6M-2 – Same as PA6 except it has a 2½ gallon metal reservoir.

PA6A – Same as PA6 with an externally adjustable pressure regulator.

PA6AM – Same as PA6A except it has a metal reservoir.

PA6D, PA6DM, PA6DM-1, PA6DM-2, PA6D2 single-speed pumps

PA6D – For use with single- or double-acting cylinders operating at 10,000 psi. Equipped with No. 9504 3-way/4-way valve and high density polyethylene reservoir. Requires 20 cfm at 100 psi air pressure at the pump.

PA6DM – Same as PA6D except it has a metal reservoir.

PA6DM-1 – Same as PA6D except it has a 1 gallon metal reservoir.

PA6D2 – Same as PA6D with a 2 gallon high density polyethylene reservoir.

PA6DM-2 – Same as PA6D except it has a 2½ gallon metal reservoir.

Metal reservoir conversion kits

Metal reservoirs are available to convert these pumps from high density polyethylene to metal reservoirs.

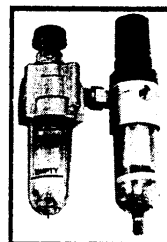
No. 213896 – Metal reservoir, (for PA6, PA6A, PA6D) 105 cu.in. capacity. Includes gasket and fasteners. Wt. 3 lbs.

No 213895 – Metal reservoir, (for PA6-2 and PA6D2) 2½ gallon capacity. Includes gasket and fasteners. Wt., 9 lbs.

9530 filter/regulator/lubricator, air

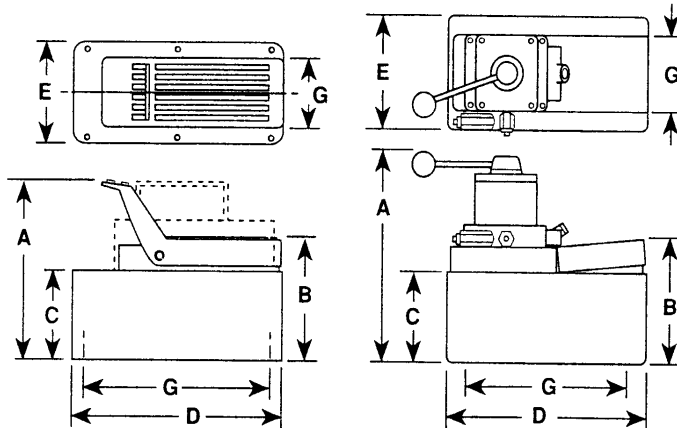
Recommended for use with single-speed air/hydraulic pumps found on this page.

See pages 60 thru 70 for hydraulic accessories.



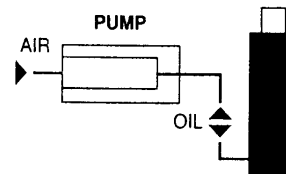
PA6, PA6A, PA6AM,
PA6M, PA6M-1,
PA6-2, PA6M-2

PA6D, PA6DM, PA6D2,
PA6DM-1, PA6DM-2

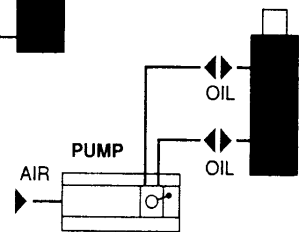


Typical Set-up

Hook-up for single-acting cylinders



Hook-up for double-acting cylinders



DIMENSIONS (inches)

Pump	A	B	C	D	E	G
PA6/PA6M, PA6A, PA6AM	7 $\frac{3}{4}$	5 $\frac{3}{4}$	4 $\frac{3}{4}$	9 $\frac{1}{2}$	5	4x9
NEW PA6M-1	7 $\frac{3}{4}$	6	4 $\frac{3}{4}$	12 $\frac{1}{2}$	7 $\frac{3}{4}$	none
PA6M-2	10	7 $\frac{3}{4}$	6 $\frac{3}{4}$	11 $\frac{1}{2}$	9 $\frac{1}{2}$	8x10
PA6D, PA6DM	10 $\frac{3}{4}$	5 $\frac{3}{4}$	4 $\frac{3}{4}$	9 $\frac{1}{2}$	5	4x9
NEW PA6DM-1	11	5 $\frac{3}{4}$	4 $\frac{3}{4}$	12 $\frac{1}{2}$	7 $\frac{3}{4}$	none
PA6-2	10 $\frac{3}{4}$	8	7	11 $\frac{1}{2}$	9 $\frac{1}{2}$	5 $\frac{1}{2}$ x7 $\frac{1}{2}$
PA6D2	12 $\frac{3}{4}$	8	7	11 $\frac{1}{2}$	9 $\frac{1}{4}$	5 $\frac{1}{2}$ x7 $\frac{1}{2}$
NEW PA6DM-2	12 $\frac{1}{2}$	7 $\frac{3}{4}$	6 $\frac{3}{4}$	11 $\frac{1}{2}$	9 $\frac{1}{2}$	8x10

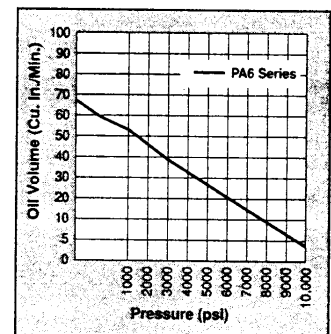
NOTE: For PA6, PA6A and PA6D, use reservoir mounting screws No. 211060.

For PA6-2 and PA6D2, use reservoir mounting screws No. 209799.

For PA6M, PA6AM and PA6DM, (metal reservoir) use reservoir mounting screws No. 215952.

For PA6M-2 (2 $\frac{1}{2}$ gallon metal reservoir), use reservoir mounting screws No. 10177 and washers No. 250607.

PERFORMANCE



Pressure vs. Volume based on 100 psi air pressure

ORDERING INFORMATION †

See current price list for shipping weights

For Use With Cyl. Type	Order No.	Valve No.	Air Supply Req'd	Reservoir		Oil Port	Prod. Wt. (lbs.)
				Cap.	Usable		
Single-Acting	PA6	-	40-120 psi	105 cu. in.	98 cu. in.	$\frac{3}{8}$ " NPTF	14
Single-Acting	PA6A, PA6AM	-	40-120 psi	105 cu. in.	98 cu. in.	$\frac{3}{8}$ " NPTF	15*
Single-Acting	PA6M	-	40-120 psi	105 cu. in.	98 cu. in.	$\frac{3}{8}$ " NPTF	18
NEW Single-Acting	PA6M-1	-	40-120 psi	1 gal.	185 cu. in.	$\frac{3}{8}$ " NPTF	23.7
Single-Acting	PA6-2	-	40-120 psi	2 gal.	454 cu. in.	$\frac{3}{8}$ " NPTF	24.5
Single-Acting	PA6M-2	-	40-120 psi	2 $\frac{1}{2}$ gal.	570 cu. in.	$\frac{3}{8}$ " NPTF	32.1
Double-Acting	PA6D, PA6DM	9504 3-way 4-way	40-120 psi	105 cu. in.	98 cu. in.	$\frac{3}{8}$ " NPTF	18.4*
NEW Double-Acting	PA6DM-1	9504 3-way 4-way	40-120 psi	1 gal.	185 cu. in.	$\frac{3}{8}$ " NPTF	28.1
Double-Acting	PA6D2	9504 3-way 4-way	40-120 psi	2 gal.	454 cu. in.	$\frac{3}{8}$ " NPTF	28.6
NEW Double-Acting	PA6DM-2	9504 3-way 4-way	40-120 psi	2 $\frac{1}{2}$ gal.	570 cu. in.	$\frac{3}{8}$ " NPTF	36.2

* Add two pounds for metal reservoir

Performance

The performance curve above indicates oil delivery at various pressure levels.

† Some Power Team pumps are available in special configurations not listed in this catalog. Power Team can "Assemble to Order" pumps with special seals, voltages, valves, relief valve settings, etc. For your special requirements please consult your local distributor or the Power Team factory.