

Proximity Sensors

Miniature Switch Style Sensors


3-Wire DC, 2-Wire AC Types

922/923FS Series

FEATURES

- Sealed to IP 67
- Similar size, mounting, termination as mechanical switch type
- -25 to 85°C (-13 to 185°F) temperature range
- Short circuit, overload, reverse polarity protection (DC)

ORDER GUIDE

Sensor Package Style	Sensing Range* mm (in.)	Sensor Type	LED	Sw. Freq.	Output Type	Catalog Listing
 9,1g (0.32 oz)	2 (.08)	3-wire DC	YES	2 kHz	NPN, N.O.	922FS2-A9N-V3-L
					PNP, N.O.	922FS2-A9P-V3-L
		2-wire AC	NO	20 Hz	N.O.	923FS2-A7T-V3

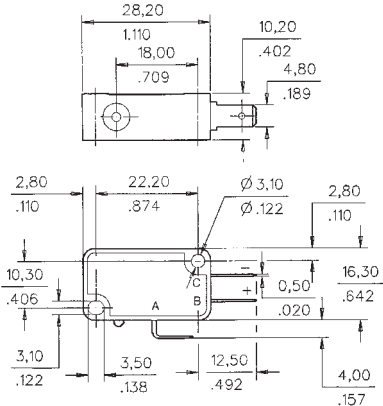
* Standard target is a 1 mm thick square of mild steel with sides equal to width of sensor package.

SPECIFICATIONS	922FS2 Series	923 Series
Sensor Type	3-wire DC	2-wire AC
Supply Voltage	9.6-50 VDC	20-250 VAC
Load Current, min./max.	0 - 200 mA	10 - 200 mA
Leakage Current, max.	50 µA	1.5 mA
Voltage Drop, max.	2.2 V	4 V
Current Consumption, max.	10 mA	—
Inrush Current	—	1.2A/20 msec
Repeatability, Shielded	±1%	±3%
Hysteresis	3-15%	3-15%

MOUNTING DIMENSIONS

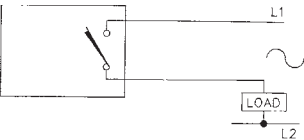
(For reference only)

mm in.

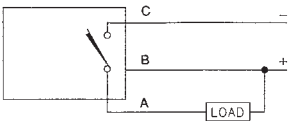


WIRING DIAGRAMS

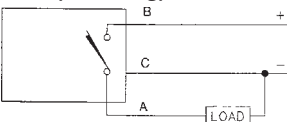
2-Wire AC



3-Wire DC
NPN (Sinking) N.O.



PNP (Sourcing) N.O.



NOTICE
A load must be used when power is applied to AC sensors. Wiring without a load will cause permanent damage.