

# PD301 SERIES

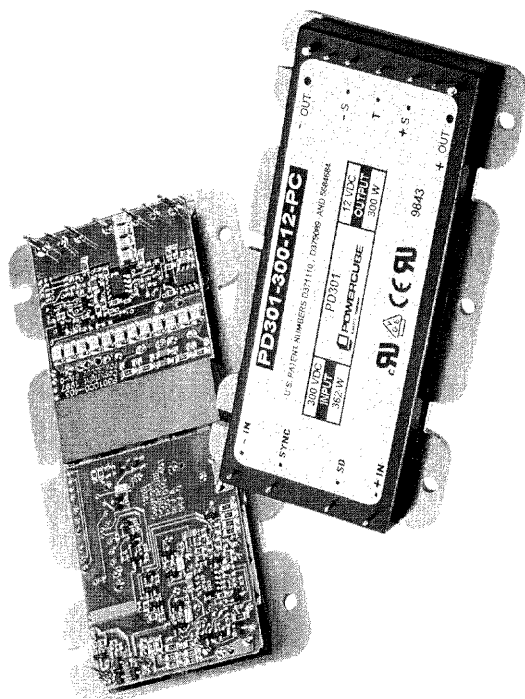
"Full Brick" Size 300 Watts  
DC - to - DC Converters

## Key Features

- 300 watts output
- Up to 90% efficiency
- Over-Temperature Protection (Thermal Shutdown)
- Over-Voltage Protection
- Total Isolation (Input, Output & Base Plate)
- Parallelable - up to 20 units (Without any External Components)

## Additional Features

- Industry standard footprint
- Remote sense
- 375 KHZ fixed frequency
- Over-current protection
- Frequency Synchronization
- Low output ripple and noise
- 100°C Maximum Operating Temperature
- Excellent transient response
- MTBF > 1,000,000 hours (35°C, G<sub>B</sub>)
- Trimmable output (+10%, -35%)
- UL (USA, Canada), VDE approved



## Summary Typical Characteristics

Set Point Accuracy	0.5%
Load/Line Regulation	0.05%
Output Drift with Temperature	0.01%
Long Term Drift (per 1,000 hours)	0.2%
Switching Frequency	375 KHZ
Output Ripple - pp	1%
Output Voltage Trim Range	65 to 110%
Remote Sense Compensation	0.5V
Current Limit	130%
Short Circuit Current	145%
OVP Set Point	130%
Efficiency	80 to 90%
Input to Output Isolation	3,000 V <sub>RMS</sub>
Input or Output to Baseplate	2,500 V <sub>RMS</sub>
Weight	6.0 oz (170 gms)



**POWERCUBE**  
A NATEL COMPANY

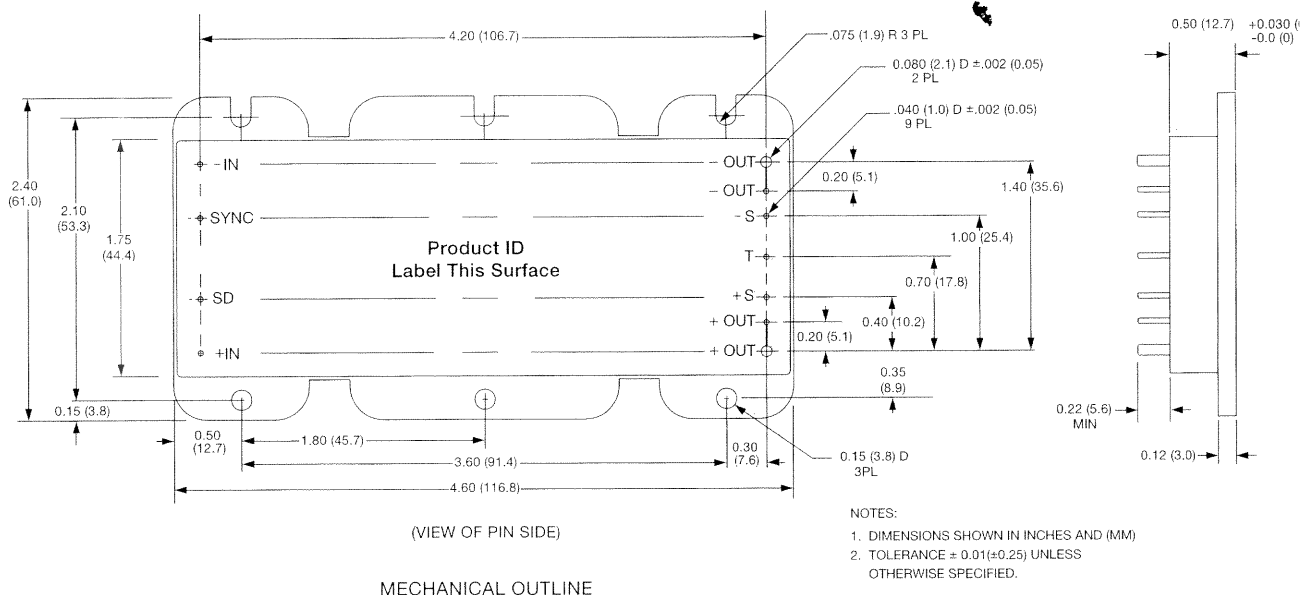
[www.powercube.com](http://www.powercube.com)

ISO 9001

TEL: 1-800-866-3590 • FAX: 1-800-866-3589

9340 OWENSMOUTH AVENUE • CHATSWORTH • CALIFORNIA 91311  
From Outside the U.S.A. Tel: 818-734-6500 • Fax: 818-734-6540

# PD301 SERIES



## Ordering Information

PD301	—	I	—	O	—	F		G
	/							
<b>Input Voltage</b>		<b>Output Voltage</b>		<b>Footprint / Pin Out</b>		<b>Performance Grade</b>		
024 = 24 V		03 = 3.3 V		P = Superior		C = Commercial (-20°C to +100°C)		
048 = 48 V		05 = 5.0 V		performance		I = Industrial (-40°C to +100°C)		
150 = 150 V		12 = 12 V		V = Industry		M = Military (-55°C to +100°C)		
300 = 300 V		15 = 15 V		standard				
		24 = 24 V						
		28 = 28 V						

Outputs less than 5V are limited to 60A. For 24V Input Models, the 5V output is limited to 50A.

## Other Products

### Coming Soon

- 50, 100, 150 and 200 Watts DC-to-DC Converters PD200 Series "full-brick" size (4.6"L X 2.4"W X 0.5"H) as a direct replacement for the industry's most popular devices.
- 50 to 200 Watts, "full-brick" size MT Series, DC-to-DC Converters packaged in a metal housing with six threaded holes for additional heatsink as well as versatile mounting.
- High Power (600 Watts) Power Factor Corrected AC-to-DC Converter.
- 300 Watts, "full-brick" size, DC-to-DC Converters with four threaded holes for additional heatsink, as well as versatile mounting (TD300 Series).

### DC-to-DC Converters available from Powercube in "half-brick" size (2.28"L X 2.4"W).

- Low Profile (0.4" height), High Density 150 Watts output DC-to-DC Converters (PD150 Series).
- 25, 50, 75 and 100 Watts DC-to-DC Converters as direct replacement for the industry's most popular devices (LPD150 Series).
- 25, 50, 75, 100 and 150 Watts DC-to-DC Converters with four threaded holes for additional heatsink, as well as versatile mounting (TD Series).
- Autoranging Universal Front-end Module 500/750 Watts & 1000/1500 Watts **AC-to-DC Converters** in a very small size (1.45"x2.28"x0.5"), models UFM500/UFM1K.



**POWERCUBE**

A NATEL COMPANY

www.powercube.com

TEL: 1-800-866-3590 • FAX: 1-800-866-3589

9340 OWENSMOUTH AVENUE • CHATSWORTH • CALIFORNIA 91311

ISO 9001

Specifications subject to change without notice  
 Printed in USA Copyright © 1998 Powercube

P85-20K10