

129 549

**THE NEW PT-550 - THE ULTIMATE IN VERSATILITY!**

**LABELLING HAS NEVER BEEN EASIER**

**WIDER TAPE FACILITY**

This unique machine can be used as a stand alone unit or can be connected to your PC.

- ▲ Windows 95 and Windows 3.1 compatible - software and cable included.
- ▲ 6mm, 9mm, 12mm, 18mm, 24mm and 36mm Tapes.
- ▲ 11 barcode protocols including ISBN5 and ISBN2.
- ▲ 3000 character memory.
- ▲ Multi-colour facility.
- ▲ Print up to 7 lines of text.
- ▲ Plus many more features to enable you to create quality labels in-house, in seconds.

# LONG

EURO

BUDGET

PROFIT

# LIFE

# LABELLING

*P-touch*  
Labelling System

P-TOUCH 550

P-TOUCH 350

P-TOUCH 220

**F1**   
**brother** **Tyrrell**

OFFICIAL SPONSOR OF THE TYRRELL F1 TEAM

# brother®

# BROTHER P-TOUCH LABELLING SYSTEMS SPECIFICATIONS

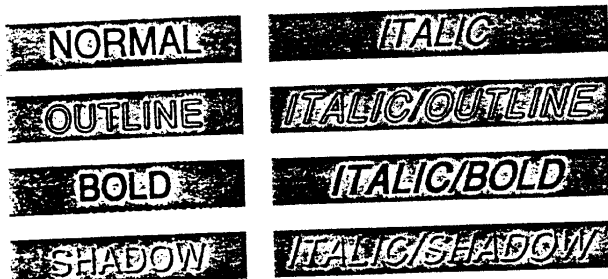
SPECIFICATIONS	Hand Held		Desk Top		
	P-touch 200	P-touch 220	P-touch 310	P-touch 350	P-touch 550*
LCD (line/chrs.)	1/4	2/12	1/15	2/12	wysiwyg**
Characters & Symbols	179	179	179	217	452/260
Built in Font	1	1	1	8	8
Character Size	5	6	5	6	7
Type Style	9	9	9	13	15
Mirror Printing	•	•	•	•	•
Correction	•	•	•	•	•
Memory (chrs.)	300	300	99	2000	3400
Multi-Print	9	9	9	99	99
Numbering	•	•	•	•	•
Multi-Line (lines)	2	4	2	4	7
Framing	•	•	•	•	•
Underline	•	•	•	•	•
Barcode		•		•	•
Multi-colour			•	•	•
TZ-Ribbon Tapes (mm)	6, 9, 12	6, 9, 12, 18	6, 9, 12, 18	6, 9, 12, 18, 24	6, 9, 12, 18, 24, 36
Optional: Adapter	•	•	•	•	•

\*\* What you see is what you get

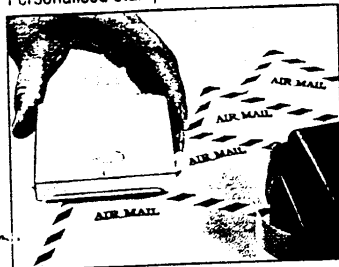
\* With Interface-PC-Connection, includes Editor software (Windows 3.x/95), data cable.  
All PC stored types, characters and symbols usable.

## LETTERING EXAMPLES

Depending on the model, there can be up to 8 built-in fonts and 15 different styles, which can be used in any combination.



P-touch Stamp Kit -  
Personalised stamps in seconds

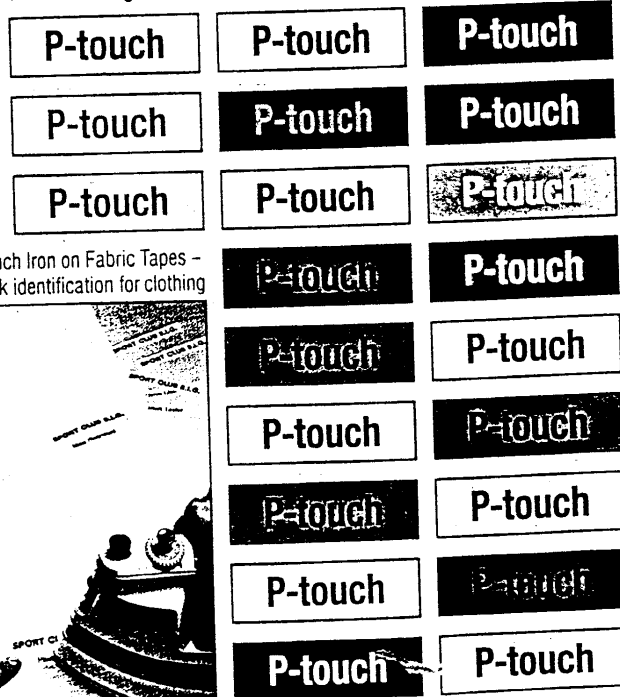


P-touch Security + Seal Bands -  
Protect your possessions

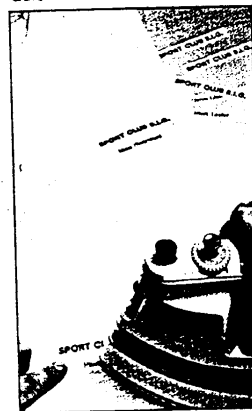


## TAPES

Tapes are available in 5 widths ranging from 6 mm to 36 mm and in a range of colours - ask your Brother stockist for details.



P-touch Iron on Fabric Tapes -  
Quick identification for clothing



Specifications are subject to change without notice.

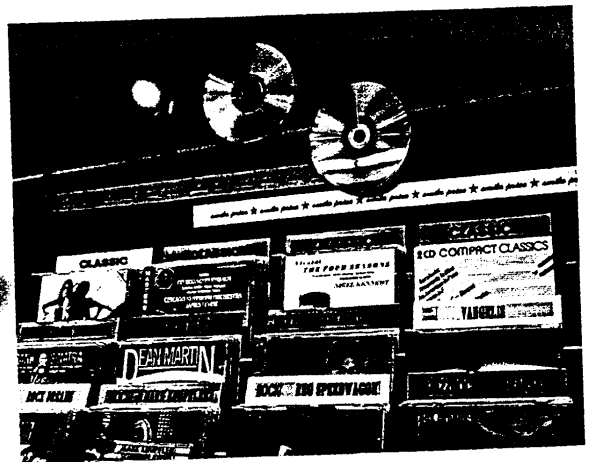
brother®

# ABELLING



With so many options available in the range, including tape widths from 6m to 36mm, lettering from small to extra large, up to 7 line printing, a wide choice of types and label tape colours, everyone can create labels with that distinctive personal touch. Wherever it may be used, you will have a label that is clear, easy to read and very much yours.

## INDIVIDUAL AND PROFESSIONAL



Brothers' unique laminated labels are weatherproof, scratchproof and can endure temperatures from -50°C up to 300°C. They will even withstand sunlight, moisture, oil and friction, making them ideal for many industrial applications.



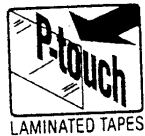
Whether in retail or manufacturing, the PT-220 and PT-350 prove themselves to be the professionals' choice, with their built-in barcodes including Code 39, Ean 8, Ean 13, Codabar, ITF 2/5, UPC-E, UPC-A and others. If you require in addition the ability to produce labels up to 36mm, a wide range of symbols, PC interface, ISBN 5 or 2 barcodes, auto-cut facility, the PT-550 is the machine you need and the very epitome of versatility.



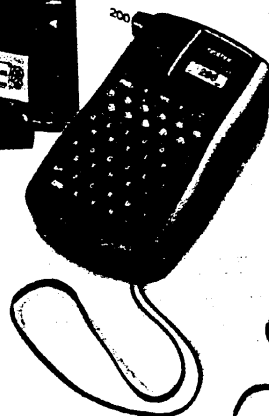
P-TOUCH 550

# LONG LIFE!

Why not bring a little order to your life - and add a splash of colour while you're doing it? All you need is a Brother P-Touch labelling machine. Key in your design, and a professional label is in your hands at the touch of a button. There are almost endless possibilities - thanks to the wide range of fonts, tape widths and colours available - and they are durable too, as they are weatherproof, scratchproof and can be wiped clean.



Whether you require the portability of the P-Touch 200 or the versatility of the P-Touch 550 with its built in PC interface and facility to produce labels up to 36mm, there is a range of labelling machines to suit every application.



P-TOUCH 200



P-TOUCH 220



P-TOUCH 310