



PHASE ANGLE ELECTRONIC HEAT SWITCH UP TO 15A

QLC

X10206

INTRODUCTION

These switchable phase angle power regulators are robust and compact units, ideal for controlling single phase mains driven loads. The standard QLC units are for 230V supply, with an integral three position and off control switch. The large triac enables the unit to handle high inrush currents with ample safety margin on industrial installations. An adhesive backed silver label and hairline knob are available as optional extras.

APPLICATIONS

Suitable for quartz lamps, conventional resistive heating elements in series or parallel configurations. Applications including ovens, moulders, dryers and some inductive loads, such as, transformers and motors.

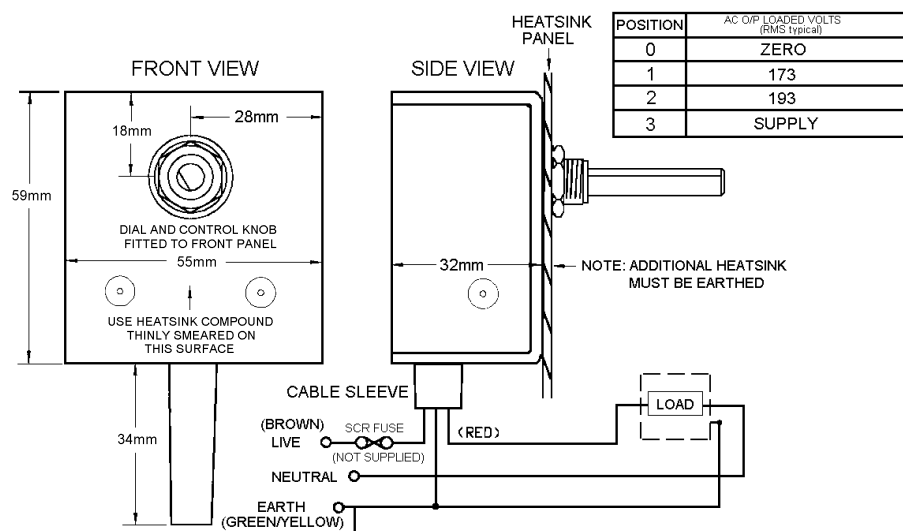
FEATURES

- Large triac for inrush protection.
- Three position & off control.
- Single hole fixing.
- Rugged and compact.
- Optional knob & dial.



INSTALLATION

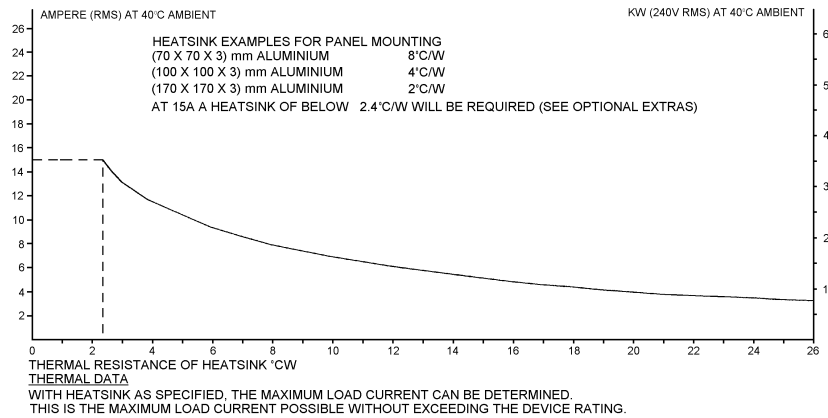
DIMENSIONS AND CONNECTIONS



WARNING

LIVE TERMINALS - SWITCH OFF SUPPLY BEFORE COMMENCING ANY SERVICE WORK.
FOR HEATSINK PANEL MOUNTING
A 10mm HOLE IS REQUIRED TO ACCEPT MOUNTING BUSH.
USE HEATSINK COMPOUND FOR EFFECTIVE THERMAL COUPLING.

INSTALLATION



SPECIFICATIONS

Triac limiting RMS. On state current	26A	Isolation voltage	2500V rms
Unit limiting RMS. On state current	15A	I ² t limiting value for fusing	112A ² s
Peak single cycle surge @ 10mS	320A	Mains supply (within 10%)	230V ac @ 50/60 Hz
Max load at 20°C ambient (without extra heatsink)	10A	Min operating current	200mA
Max unit operating temperature	65°C	Unit storage temperature range	-20 to +85°C

FURTHER DIMENSIONS

Shaft diameter	6.3mm	Shaft projection from bush	30mm
Bush length	5mm	Standard cable length	400mm

FUSING:

It is recommended to use semiconductor (fast acting) type fuses or circuit breakers (Semiconductor - MCB) for unit protection. On initial 'switch on' some loads may need an increased Factor of Safety (F of S) for unit and/or device protection. (See SRA Datasheet for further information).

CE MARKING

This product family carries a "CE" mark. This phase angle controller needs a suitable remote filter. For information see recommendation section and contact our sales desk. (See Declaration of Conformity).

RECOMMENDATION

Other documents available on request, which may be appropriate for your applications.

CODE	IDENTITY	DESCRIPTION
X10229	RFI	Filtering recommendation - addressing EMC Directive
X10213	ITA	Interaction, uses for phase angle and for burst fire control.
X10255	SRA	Safety requirements - addressing the Low Voltage Directive (LVD) including :- Thermal data/cooling ; "Live" parts warning & Earthing requirements; Fusing recommendations.
AP02/4	COS	UAL Conditions of sale

NOTE It is recommended that installation and maintenance of this equipment should be done with reference to the current edition of the I.E.E wiring regulations (BS7671) by suitably qualified/trained personnel. The regulations contain important requirements regarding safety of electrical equipment. (For International standards refer to I.E.C directive IEC 950).

ORDER CODE

State part number: QLC 230V AC
Optional extras include: Knob, Dial, Heatsink paste, Filter.
Note: When ordering a filter the maximum current the QLC is to be used at will be required.



UNITED AUTOMATION LIMITED

1 Southport Business Park
Southport, PR8 4HQ, U.K.

Tel (01704)-565713
Fax (01704)-569760

Page No 2 of 2 Issue 2 17/07/98

