

FEATURES AND SPECIFICATIONS



Mini-Fit H20™ Sealed Interconnect System 4.20mm (.165") Pitch

The sealed Mini-Fit H20™ IP67-rated system with pre-installed, integrated interface and wire seals meet the need for weatherproof, compact connections in wire-to-wire applications up to 9.0A per circuit and contribute to lower applied costs compared to connectors with manually installed seals

The Mini-Fit H20™ mid-range power connector is designed for use in weatherproof applications that require a sealed system. The Mini-Fit H20 connector system is IP67-rated, which ensures connector integrity when submersed in up to one meter of water. The Mini-Fit H20 connector has a small overall profile and can handle up to 9.0A per circuit.

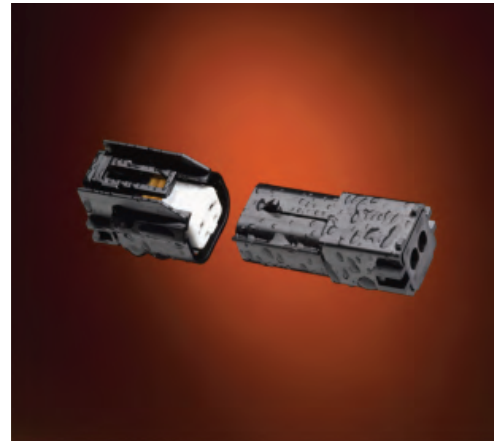
The Mini-Fit H20 product family consists of plug and receptacle assemblies and male and female crimp terminals. The plug and receptacle assemblies are provided with the interface and wire seals pre-installed, providing time savings to the customer. The terminals have a new "wingless" design that will not damage seals upon installation or removal. Terminals will accept both 18 and 20 AWG, UL 1015 wires.

The Mini-Fit H20 housings are molded from a UV-stabilized, UL 94V-0 material. The Mini-Fit H20 connector is the latest addition to the Mini-Fit product family. For more information on Molex's extensive Mini-Fit product offering, visit: www.molex.com/link/MiniFitH20.html

- 46055** Female Terminal
- 46056** Male Terminal
- 46064** Receptacle Assembly
- 46065** Plug Assembly

Features and Benefits

- IP67-rated connector ensures a water and dust-tight interconnection for use in outdoor applications
- Receptacle and plug housings are shipped with interface and wire seals pre-installed to lower applied cost by reducing installer assembly time
- Positive-locking system ensures the connectors are securely mated and prevents accidental un-mating
- UV-stabilized, molded materials can be used in applications exposed to direct sunlight
- Can be used with 18 and 20 AWG wires and accommodate multiple applications
- Small overall profile for use in tight spaces



SPECIFICATIONS

Reference Information

Packaging:
Terminals: Reel and Bag
Assemblies: Bag
UL File No.: E29179
CSA File No.: 1068385

Electrical

Voltage (max.): 600V
Current (max.): 9.0A per circuit

Physical

Housing: Polyester, UL 94V-0
Contact: Copper (Cu) Alloy
Plating:
Contact Area: Tin or 30µ" Select Gold (Au)
Operating Temperature: -40 to +105°C

Mechanical

Contact Insertion Force: 15N (3.372 lb)
Contact Retention to Housing: 20N (4.496 lb)
Mating Force:
Tin (Sn): 11.1N (2.495 lb) max.
Gold (Au): 4.4N (.989 lb) max.
Unmating Force:
Tin (Sn): 2.2N (.495 lb) min.
Gold (Au): 1.0N (.225) min.
Durability:
Tin (Sn): 75 cycles min.
Gold (Au): 100 cycles min.

MARKETS AND APPLICATIONS



Mini-Fit H20™ Sealed Interconnect System 4.20mm (.165") Pitch

- Vending
 - Drink dispensers
 - Food service equipment
- Automotive / Motorcycles
- Medical
- Industrial Equipment
 - Outdoor lighting
 - Conveyor-belt controls
- Outdoor Entertainment
 - Hot tubs
 - Swimming pools
- Recreation Vehicles
 - ATV
 - Golf carts
 - Boats
 - Jet skis and snowmobiles
- Material Handling Equipment
 - Forklifts
 - Agricultural equipment
- Solar and Renewable Energy

- 46055** Female Terminal
- 46056** Male Terminal
- 46064** Receptacle Assembly
- 46065** Plug Assembly



ORDERING INFORMATION

Receptacle and Plug Assembly

Order No.	Component	Circuits
46064-0032	Receptacle	2
46065-0032	Plug	

Crimp Terminals

Order No.	Gender	Plating	Packaging
46055-0005	Female	Tin	Reel
46055-0006	Female	30µ" Select Gold	
46056-0002	Male	Tin	
46056-0003	Male	30µ" Select Gold	
46055-0007	Female	Tin	Bag
46055-0008	Female	30µ" Select Gold	
46056-0004	Male	Tin	
46056-0005	Male	30µ" Select Gold	

www.molex.com/link/MiniFitH20.html