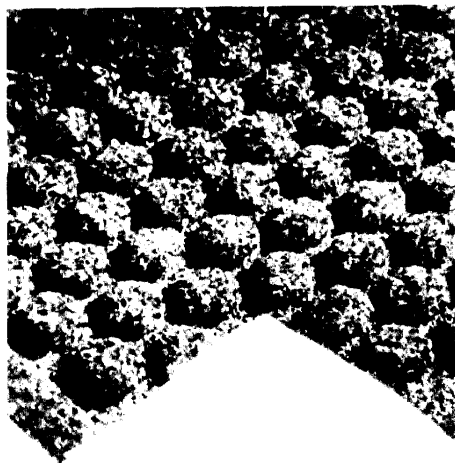


AQUATRAP

KEY FEATURES



- ❶ A patented design comprising a hard-wearing carpet surface bonded to a heavy duty, contour moulded base.
- ❷ Very strong - used in both indoor and outdoor entrances.
- ❸ Excellent dirt and moisture removal performance – moulded thumbs scrape off dirt and moisture is trapped in the raised outer lip.
- ❹ The only entrance mat available with carpet running to the edge of the mat to eliminate broken and torn borders.
- ❺ Gripper backing prevents mat from movement.

SUITABLE APPLICATIONS

◆ **Wet** and **Dry** environments, **INDOORS AND OUTDOORS**.

◆ Ideal for all **ENTRANCE AREAS** – can withstand heavy-duty use and extremely easy to clean.

FATIGUE PREVENTION	WEAR TOLERANCE	SLIP RESISTANCE
N/A	Excellent	Excellent

PRODUCT DATA

Material:	100% Polypropylene surface with SBR Rubber backing
Appearance:	Moulded 'thumbs' – carpet face
	Thickness: 12 mm nominal
Chemical Resistance:	N/A.
UV Resistance:	Resistant to UV
Operating Temperature:	-20°C to +60°C
Flame Retardancy:	Conforms to DOC FF 1-70 and DOC FF 2-70

INSTALLATION & CLEANING

Installation:	Loose lay
Cleaning:	Wet/Dry vacuum or simply wash down with a hose.

SIZES & OPTIONS

Sizes:	Available in single mats. 0.6 m x 0.9 m, 0.9 m x 1.5 m and 1.2 m x 1.8 m
Colours:	Green, Blue, Grey or Burgundy
Country of Origin:	USA