

SOFT START-UP VALVE
SERIES AV 2000, 3000, 4000 1/4, 3/8, 1/2"

- ✓ Combined soft start and quick exhaust valve
- ✓ Compatible with modular series FRL
- ✓ Large Cv factor
- ✓ Low power
- ✓ Air supply and exhaust can be operated manually
- ✓ High relief capacity



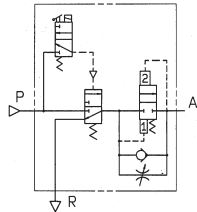
The AV valve pictured together with an AW series Filter/Regulator and an AN series Silencer. (To order these items see Air Preparation section {AW} and Valves section {AN})

TECHNICAL
SPECIFICATIONS

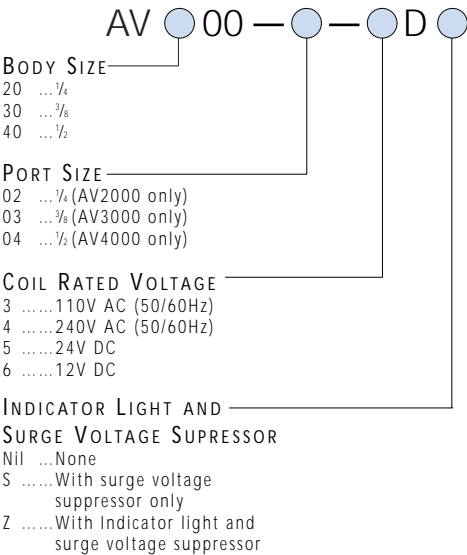
Model			AV2000	AV3000	AV4000
Port size			¼	⅜	½
Proof pressure			1.5 MPa		
Operating pressure range			1.0 MPa		
Pressure gauge port size			⅛		
Ambient and fluid temperature			0 ~ 60°C*		
Frequency of operation			3 ~ 5 cycles/day (See Note 1)		
CV factor		P → A	1.19	2.20	3.60
		A → R	1.39	2.89	4.49
Weight (kg)			0.27	0.48	0.74
Electrical Spec.	Coil rated voltage		110, 240V AC (50/60Hz); 12, 24V DC		
	Allowable voltage fluctuation		-15% to +10% of rated voltage		
	Coil insulation type		Type B equivalent (130°C)		
	Apparent power AC (power consumption)	Inrush	5.6VA (50Hz)		
		Holding	3.4VA (2.1W)/50Hz		
	Power consumption DC		1.8W		
	Electrical connector		DIN 43650 (industrial form)		
Semi-standard spec.		With indicator light and surge voltage suppressor			
Pilot valve manual override			Non-locking push type		

*Use dry air when temperature is low.
NOTE 1: NOT FOR FREQUENT USE SUCH AS MACHINE GUARDS.

SYMBOLS



HOW TO
ORDER
SOFT START-UP VALVE



CAUTION

- Safety Note**
1. This valve cannot prevent cylinders shooting out when a closed-centre solenoid valve is used, or equipment driving with a load factor of 50% or more.
 2. When a regulator is to be mounted on the secondary side, use a check valve regulator (AR**60). Standard regulators (AR2000, 3000, 4000) do not allow large volume back-flow.
 3. Mount a lubricator, as necessary, on the primary side (P port side) of the valve. When the lubricator is mounted on the secondary side (A port side), oil back-flows and is exhausted from port R.
 4. The AV Series is not designed or certificated as a Safety product within the definitions of BS EN954-1 Category 1,2,3 or 4 system, secondary monitoring or protection must be in place.

STOCKED PRODUCTS
FOR A LIST OF STOCKED PRODUCTS,
PLEASE SEE THE CURRENT SMC PRICE LIST

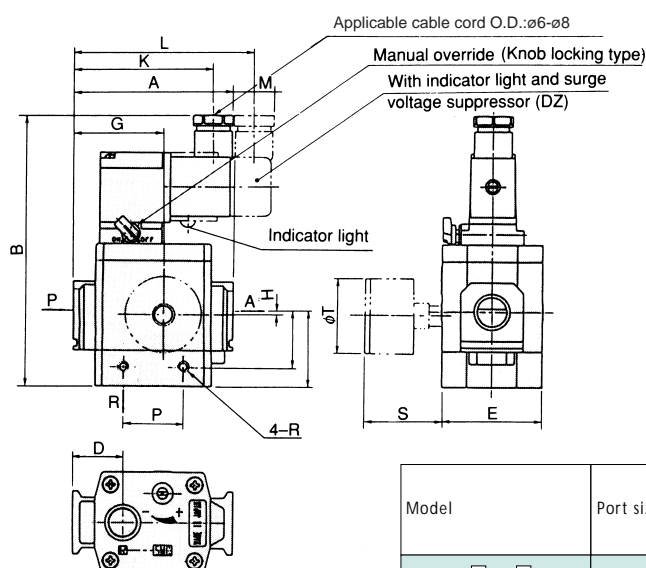
DIMENSIONS
SEE NEXT PAGE



FOR FURTHER TECHNICAL
DETAILS ON THIS
PRODUCT REQUEST
CATALOGUE REFERENCE
E5G

MODULAR TYPE – ACCESSORIES

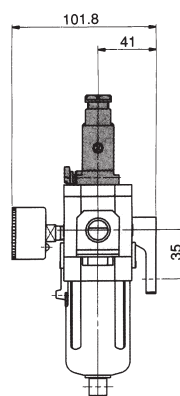
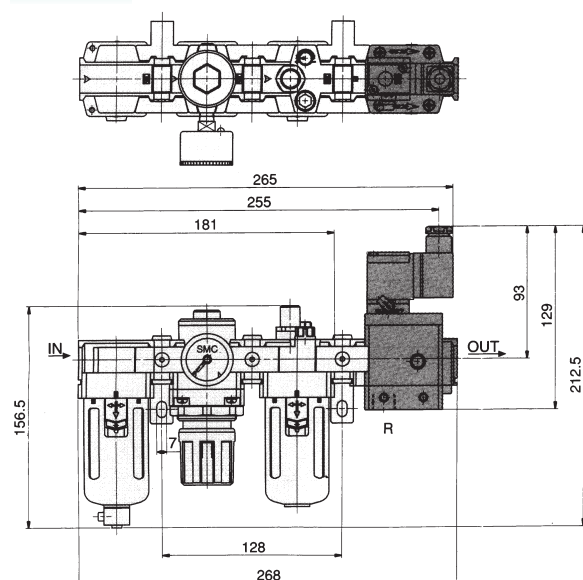
DIMENSIONS DIN CONNECTOR



Model	Port size	A	B	C	D	E	Pressure gauge Mounting port	G	H	I	J	K	L	M	N	P	Q	R
							F											
AV2000-□02-□D	1/4	66	125.5	31	22	40	1/8	38	0	—	—	67.5	—	10.5	—	29	23.5	M4X0.7 depth 4.5
AV2000-□02-□DZ												—	84.5	27.5				
AV3000-□03-□D	3/8	76	132.5	36	24	48	1/8	43	2	—	—	70.5	—	3.5	—	28	27.5	M5X0.8 depth 5
AV3000-□03-□DZ												—	87.5	20.5				
AV4000-□04-□D	1/2	98	147.5	47	32	52	1/8	57	3	—	—	82.5	—	—	—	42	37	M6X1 depth 6
AV4000-□04-□DZ												—	99.5	10.5				

DIMENSIONS

EXAMPLE OF AC3000 + SOFT START-UP VALVE



SEE INSIDE FRONT COVER FOR
DETAILS OF YOUR LOCAL SALES OFFICE



FOR FURTHER TECHNICAL
DETAILS ON THIS
PRODUCT REQUEST
CATALOGUE REFERENCE
E5G

PRESSURE SWITCH:
SERIES IS1000

- ✓ Reed switch type design
- ✓ Compact
- ✓ Pressure setting made easy by scale plate
- ✓ Type M sandwiches between air preparation units: Type E acts as an end connector

NOTE

The pressure switch type-M can be mounted on both IN and OUT sides on AF, AR, AFM, and AFD units but cannot be mounted in this way on AW or AV units, in this case use type-E as an end connector.

TECHNICAL
SPECIFICATIONS

Fluid	Air
Proof pressure	1.0 MPa
Max. operating pressure	0.7 MPa
Setting range (off)	0.1 ~ 0.4 MPa
Differential pressure (Hysteresis)	Less than 0.08 MPa
Ambient & fluid temperature	5 ~ 60°C
Type of actuation	1a (N.O.)
Switch capacity	AC2VA • DC2W
Operating voltage (AC, DC)	12V, 24V, 48V, 100V
Max. operating current	AC, DC 12V ~ 48V: 50mA AC, DC 100V: 25mA
Response time	1.2ms

HOW TO
ORDER
PRESSURE SWITCH
MODULAR TYPE

Intermediate connector type-M, complete with yoke clips and 3m lead

IS1000M-2Y-X201	2000 SERIES
IS1000M-3Y-X201	3000 SERIES
IS1000M-4Y-X201	4000 SERIES
IS1000M-6Y-X201	5/6000 SERIES

(Option: -X215 for setting range 0.15~0.5MPa)

End unit type-E, on Y20 to Y40 end spacer, complete with yoke clips and 3m lead.

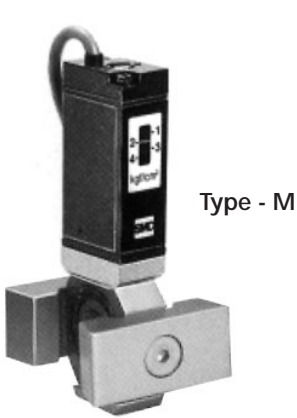
IS1000E-201Y-X201	...2000 SERIES	1/8" PORT
IS1000E-202Y-X201	...2000 SERIES	1/4" PORT
IS1000E-302Y-X201	...3000 SERIES	1/4" PORT
IS1000E-303Y-X201	...3000 SERIES	3/8" PORT
IS1000E-402Y-X201	...4000 SERIES	1/4" PORT
IS1000E-403Y-X201	...4000 SERIES	3/8" PORT
IS1000E-404Y-X201	...4000 SERIES	1/2" PORT

(Option: -X215 for setting range 0.15~0.5MPa)

For non-modular IS1000, see 'Compact pressure switch IS1000 (Single contact)' in the instrumentation section.

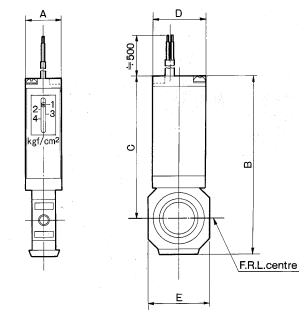
STOCKED PRODUCTS

FOR A LIST OF STOCKED PRODUCTS,
PLEASE SEE THE CURRENT SMC PRICE LIST



The switches shown below DO NOT come with Yoke Clips attached. (See How to Oder)

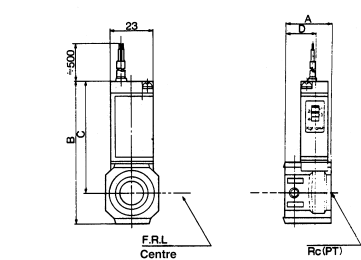
DIMENSIONS
PRESSURE SWITCH
IS1000M



Model*	A	B	C	D	E
IS1000M-2	15	73.5	62.6	23	28
IS1000M-3	15	82	64.9	23	29
IS1000M-4	15	88.7	67.6	23	35
IS1000M-5	15	91	71	23	44
IS1000M-6	15	100	72.5	23	54

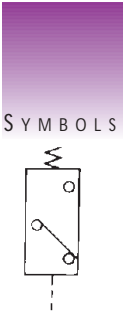
*Without Yoke Clip.

DIMENSIONS
PRESSURE SWITCH
IS1000E



Model*	Port	A	B	C	D	Combination Series
IS1000E-201	$\frac{1}{8}$	28	73	62	18.5	AC2000
IS1000E-202	$\frac{1}{4}$					
IS1000E-203	$\frac{3}{8}$					
IS1000E-302	$\frac{1}{4}$	26	80	63	16.5	AC3000
IS1000E-303	$\frac{3}{8}$					
IS1000E-304	$\frac{1}{2}$	40	80	63	17.5	
IS1000E-402	$\frac{1}{4}$	33	87	66	17.5	AC4000
IS1000E-403	$\frac{3}{8}$					
IS1000E-404	$\frac{1}{2}$					
IS1000E-406	$\frac{3}{4}$	50	87	66	17.5	

*Without Yoke Clip.



THE IS1000E SHOWN TOGETHER WITH A
FILTER/REGULATOR SERIES AW

SHUT OFF VALVE SERIES VHS (3 PORT RELIEVING)

- ✓ Relieves the downstream pressure for system servicing.
- ✓ Visual position indication

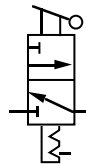
SMC Pneumatics' Series VHS 3 Port Valves provide a means to prevent accidental start-ups while personnel are cleaning or servicing equipment. When in the exhaust position, the valve may be padlock secured.

To eliminate any uncertainty of valve status, a window displays when the valve is in supply or exhaust position.

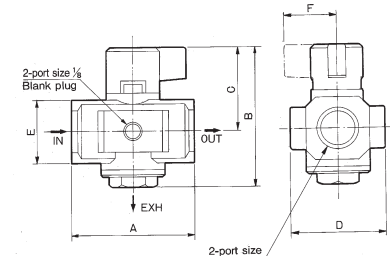
* Simple user modification allows lock in pressure supply position.



SYMBOLS

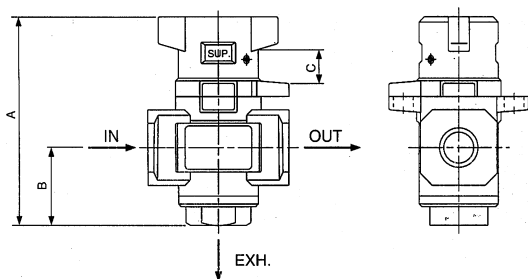


DIMENSIONS SERIES VHS SHUT-OFF VALVE



Model	Port Size	Exh. Port	A	B	C	D	E	F
VHS2000	1/8, 1/4	1/8	40	56	36	28	22	25
VHS3000	1/4, 3/8	1/4	53	74	45	48	28	30
VHS4000	1/4, 3/8, 1/2	3/8	70	80	48	54	36	30

DIMENSIONS SERIES VHS 3 PORT VALVE WITH LOCKING FACILITY



Model	Port Size	Exh Port	A	B	C	D	E	ØF	G	ØH
VHS2500	1/8, 1/4	1/8	60	20	12.8	40	44	33	28	7.5
VHS3500	1/4, 3/8	1/4	73	29	12.8	53	53	42	29	7.7
VHS4500	1/4, 3/8, 1/2	3/8	85	32	12.6	70	64	49	36	10
VHS5500	3/4, 1	1/2	136	56	32	90	80	65	54	10

How To ORDER SERIES VHS SHUT-OFF VALVES

VHS	●	●	00	—	●	—	●
BODY SIZE AND APPLICABLE FRL SERIES	2	2000				
	3	2500, 3000				
	4	4000				
	5	5000				
LOCKING OPTION	0	Standard				
	5	Lockable				
INPUT PORT SIZE	01	...	Rc 1/8				
	02	...	Rc 1/4				
	03	...	Rc 3/8				
	04	...	Rc 1/2				
	06	...	Rc 3/4				
	10	...	Rc 1				
HANDLE COLOUR	Nil	...	Black handle and grey body				
	X1	...	Red handle and body				

STOCKED PRODUCTS
FOR A LIST OF STOCKED PRODUCTS,
PLEASE SEE THE CURRENT SMC PRICE LIST



SEE INSIDE FRONT COVER FOR
DETAILS OF YOUR LOCAL SALES OFFICE



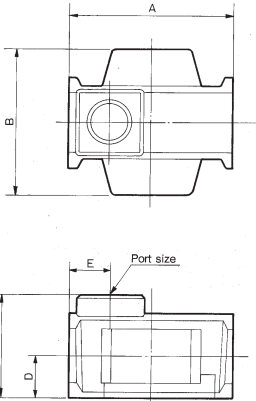
FOR FURTHER TECHNICAL
DETAILS ON THIS
PRODUCT REQUEST
CATALOGUE REFERENCE
E5G

CHECK VALVE SERIES AKM

The check valve spacer is designed to prevent back flow of lubricated air from a lubricator when both lubricated and non-lubricated supplies are required.



DIMENSIONS CHECK VALVE SERIES AKM



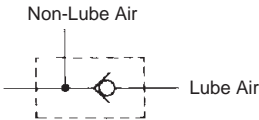
Model	Port Size	A	B	C	D	E
AKM2000	1/8 1/4	40	40	28	11	11
AKM3000	1/4 3/8	53	48	34	14	13
AKM4000	3/8 1/2	70	54	42	18	15

HOW TO ORDER CHECK VALVE SERIES AKM

AKM

BODY SIZE	PORT SIZE
2000.....2000 Series	01 ... 1/8
3000.....3000 Series	02 ... 1/4
4000.....4000 Series	03 ... 3/8

SYMBOLS



STOCKED PRODUCTS
FOR A LIST OF STOCKED PRODUCTS,
PLEASE SEE THE CURRENT SMC PRICE LIST



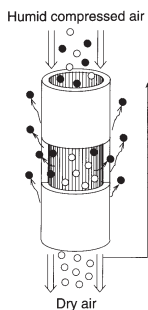
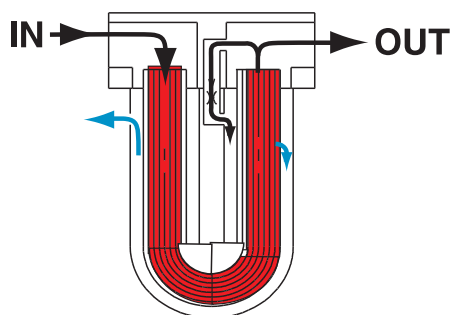
MEMBRANE AIR DRYER SERIES IDG

- ✓ Outlet air flow range 50, 100, 200, 300 and 500 l/min at -20°C outlet dewpoint
- ✓ No external power source required
- ✓ Environmentally friendly non-freon
- ✓ Lightweight and compact. Easy to handle
- ✓ No vibration or exhaust heat
- ✓ Dew point indicator for easy inspection of air drying condition
- ✓ Three atmospheric dew point options -15°C (H), -20°C (std), and -40°C (L - demanded by semi-conductor industry)
- ✓ Optional one touch fitting to exhaust purge air
- ✓ Modular assembly available with integral prefilters (AFM/AFD)

NOTE: This product will be released during 1998. Please contact your SMC Regional Centre for the latest information.



TECHNICAL SPECIFICATIONS

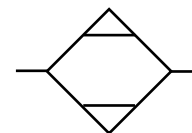


The Membrane Air Dryer uses hollow fibre made of a high molecular membrane which has the characteristics of passing water vapour easily, but not to pass air/gas.

- Air/gas
- Water vapour

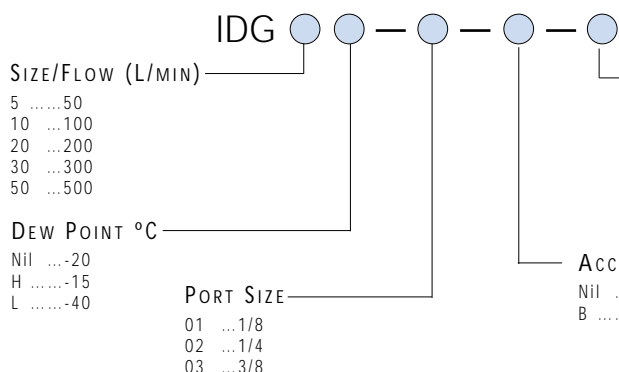
When humid air is supplied to the inside of the hollow fibre tube and dry air reduced to near atmospheric pressure is supplied to the outside of the hollow fibre tube as purge air, water vapour penetrates from the inside of the membrane to the outside due to the pressure differential between the water vapour inside the tube and the purge air outside. With this principle, the compressed air which passes through the hollow fibre tube is dehumidified.

SYMBOL



HOW TO ORDER

SINGLE UNIT



OPTION

- Nil ...Standard
- PWith one-touch fitting for purge air discharge
- RFlow direction (Right to Left)
- SWith dew point indicator (only with IDG5) - (Other sizes have indicator as standard)

ACCESSORIES

- Nil(standard)
- BWith bracket

STOCKED PRODUCTS
FOR A LIST OF STOCKED PRODUCTS,
PLEASE SEE THE CURRENT SMC PRICE LIST

ACCESSORIES BRACKET SET

BM59	for IDG5, 5H
BM61	for IDG10, 10H
BM63	for IDG20, 20H
BM64	for IDG30, 30H, 30L, 50, 50H, 50L

ACCESSORIES

MEMBRANE MODULE SET

IDG-EL5	for IDG5
IDG-EL5H	for IDG5H
IDG-EL10	for IDG10
IDG-EL10H	for IDG10H
IDG-EL20	for IDG20
IDG-EL20H	for IDG20H
IDG-EL30	for IDG30, 30H, 30L
IDG-EL50	for IDG50, 50H, 50L



Precautions

Operating conditions

- (1) Always use within standard specifications
- (2) Read the Operation manual attached for correct use
- (3) Do NOT use in environments of corrosive gas, compressed air including organic solvent, etc.
- (4) Do NOT use with breathing air equipment.



SEE INSIDE FRONT COVER FOR
DETAILS OF YOUR LOCAL SALES OFFICE



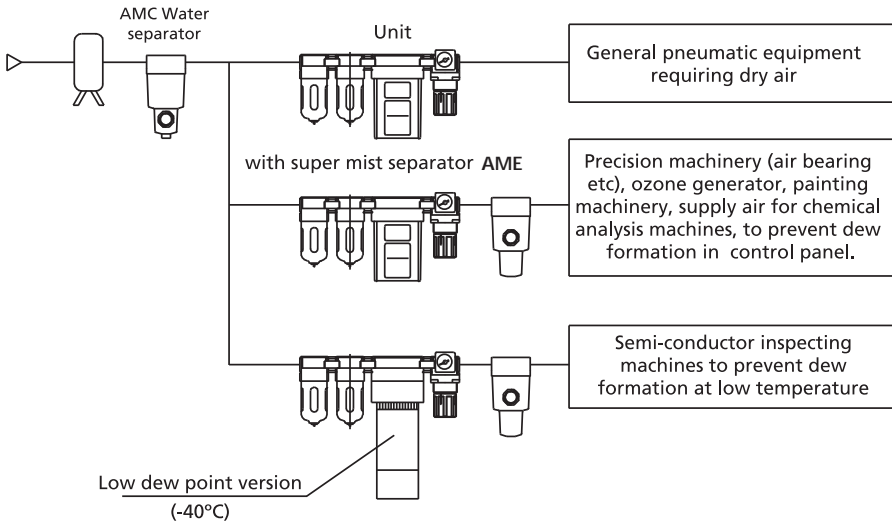
FOR FURTHER TECHNICAL
DETAILS ON THIS
PRODUCT REQUEST

TECHNICAL
SPECIFICATIONS

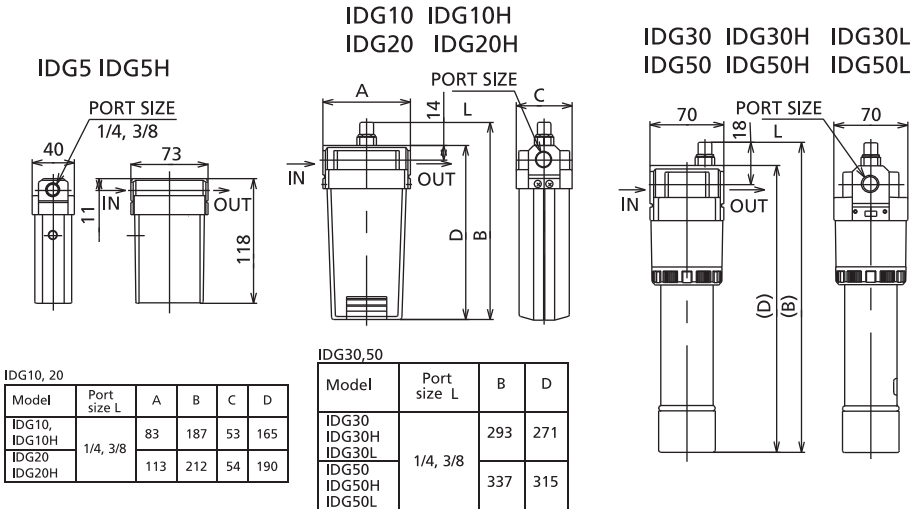
Reference dew point		-20°C (std type)					-15°C (-H type)					-40°C (-L type)	
Model IDG		5	10	20	30	50	5H	10H	20H	30H	50H	30L	50L
Operating conditions	Fluid	Compressed air											
	Inlet pressure MPa	0.3 to 0.85			0.3 to 1.0		0.3 to 0.85			0.3 to 1.0			
	Inlet air temp. °C Note 1	-5 to 55			-5 to 50		-5 to 55			-5 to 50			
	Ambient air temp.	-5 to 55			-5 to 50		-5 to 55			-5 to 50			
Reference performance	Outlet air atmospheric dew point °C	-20					-15					-40	
Reference performance conditions	Inlet air flow L/min (ANR) Note 2	62	125	250	375	625	56	111	222	335	560	100	150
	Outlet air flow L/min (ANR)	50	100	200	300	500	50	100	200	300	500	75	110
	Purge air flow L/min (ANR) Note 3	12	25	50	75	125	6	11	22	35	60	25	40
	Inlet air pressure MPa	0.7											
	Inlet air temp. °C	25											
	Inlet air saturation temp. °C	25											
	Ambient temp. °C	25											
	Dew point indicator purge air flow	1 L/min (ANR) at inlet air pressure of 0.7MPa											
Port size		1/8-1/4		1/4-3/8			1/8-1/4		1/4-3/8				
Weight kg (with bracket)		0.25 (0.31)	0.43 (0.51)	0.66 (0.76)	0.74 (0.87)	0.77 (0.90)	0.25 (0.31)	0.43 (0.51)	0.66 (0.76)	0.74 (0.87)	0.77 (0.90)	0.74 (0.87)	0.77 (0.90)

Note 1) No dew formation
Note 2) ANR indicates the flow rate converting to the stated value at atmospheric pressure at 20°C.
Note 3) It includes dew point indicator purge air flow of 1L/min (ANR) (at 0.7MPa of inlet air pressure) (Except for IDG, 5,5H)

APPLICATION EXAMPLES
OF AIR PREPARATION
(DRYER) COMBINATIONS

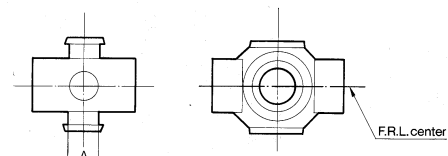


DIMENSIONS
SERIES IDG



FOR FURTHER TECHNICAL
DETAILS ON THIS
PRODUCT REQUEST
CATALOGUE REFERENCE
E5G

DIMENSIONS SPACER



Model	A	Applicable Model
Y10	8	Ac100-AC1040
Y20	10	AC2000-AC2040
Y30	11	AC2500-AC2540 AC3000-AC3040
Y40	14	AC4000-AC4040
Y50	14	AC4000-06-AC4040-60
Y60	15	AC5000, AC5500, AC6000 AC5020, AC5520, AC6020

SPACER



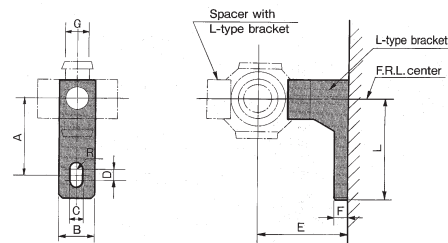
HOW TO ORDER SPACER

Y10 ... (1000 SERIES)
Y20 ... (2000 SERIES)
Y30 ... (3000 SERIES)
Y40 ... (4000 SERIES)
Y50 ... (4000-06 SERIES)
Y60 ... (5/6000 SERIES)

STOCKED PRODUCTS
FOR A LIST OF STOCKED PRODUCTS,
PLEASE SEE THE CURRENT SMC PRICE LIST

L TYPE BRACKET

DIMENSIONS L TYPE BRACKET



HOW TO ORDER L TYPE BRACKET

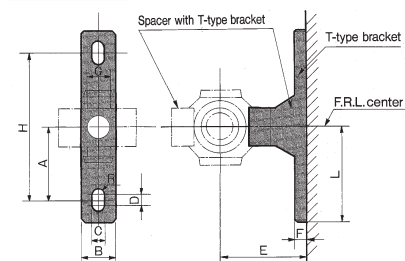
Spacer with Bracket Only
1000 SERIES Y10L B110L
2000 SERIES Y20L B210L
3000 SERIES Y30L B310L
4000 SERIES Y40L B410L
4000-06 SERIES... Y50L B510L
5/6000 SERIES ... Y50L B610L

STOCKED PRODUCTS
FOR A LIST OF STOCKED PRODUCTS,
PLEASE SEE THE CURRENT SMC PRICE LIST

Spacer with L-type bracket	A	B	C	D	E	F	G	R	L
Y10L	20	12	4.5	3	25	5	8	2.25	27
Y20L	24	15	5.5	3	30	5	10	2.75	33
Y30L	35	16	7	4	41	7	11	3.5	45
Y40L	40	22	9	4	50	7	14	4.5	50
Y50L	40	22	9	4	50	7	14	4.5	50
Y60L	50	24	12	4	70	10	15	6	62.5

T TYPE BRACKET

DIMENSIONS T TYPE BRACKET



HOW TO ORDER T TYPE BRACKET

Spacer with Bracket Only
1000 SERIES Y10T B110T
2000 SERIES Y20T B210T
3000 SERIES Y30T B310T
4000 SERIES Y40T B410T
4000-06 SERIES... Y50T B510T
5/6000 SERIES ... Y60T B610T

STOCKED PRODUCTS
FOR A LIST OF STOCKED PRODUCTS,
PLEASE SEE THE CURRENT SMC PRICE LIST

Spacer with T-type bracket	A	B	C	D	E	F	G	H	R	L
Y10T	20	12	4.5	3	25	5	8	40	2.25	27
Y20T	24	15	5.5	3	30	5	10	40	2.75	33
Y30T	35	16	7	4	41	7	11	70	3.5	45
Y40T	40	22	9	4	50	7	14	80	4.5	50
Y50T	40	22	9	4	50	7	14	80	4.5	50
Y60T	50	24	12	4	70	10	15	100	6	62.5



SEE INSIDE FRONT COVER FOR
DETAILS OF YOUR LOCAL SALES OFFICE



FOR FURTHER TECHNICAL
DETAILS ON THIS
PRODUCT REQUEST
CATALOGUE REFERENCE
E5G

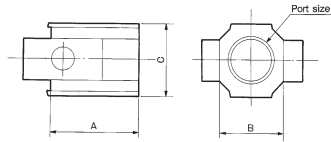


END BLOCK ADAPTOR



- ✓ Port sizes: M5 ~ 1" Rc
- ✓ Allows for easy installation and maintenance

DIMENSIONS
PIPING ADAPTOR



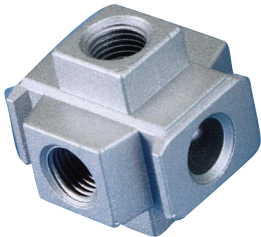
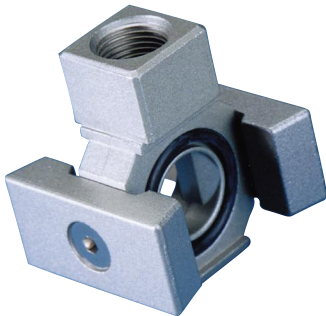
Model	Port size	A	B	C
E10-M5	M5x0.8	16	17.5	14
E20-01	1/8	23	22	22
E20-02	1/4			
E20-03	3/8			
E30-02	1/4	26	34.2	29
E30-03	3/8			
E30-04	1/2	40	34.2	29
E40-03	3/8	33	42.2	35
E40-04	1/2			
E40-06	3/4	50	42.2	35
E50-06	3/4	36	44	46.2
E60-06	3/4	40	54	55.2
E60-10	1			

How To
ORDER
PIPING ADAPTOR

- E10-M5 1000 SERIES
E20-01 2000 SERIES
E20-02 2000 SERIES
E20-03 2000 SERIES
E30-02 3000 SERIES
E30-03 3000 SERIES
E30-04 3000 SERIES
E40-03 4000 SERIES
E40-04 4000 SERIES
E40-06 4000 SERIES
E50-06 4000-06 SERIES
E60-06 5/6000 SERIES
E60-10 5/6000 SERIES

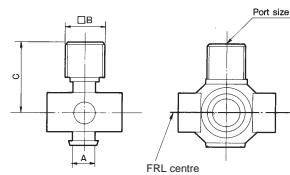
STOCKED PRODUCTS
FOR A LIST OF STOCKED PRODUCTS,
PLEASE SEE THE CURRENT SMC PRICE LIST

BRANCHING UNITS



DIMENSIONS
T TAKE OFF

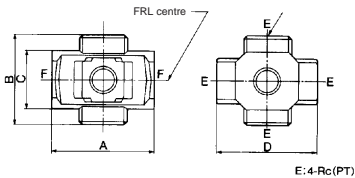
Cannot be installed adjacent to
combined filter/regulator unit



Model	Port Size	A	B	C
Y11-M5	M5X0.8	8	12	8
Y21-01	1/8	10	29	19
Y21-02	1/4	10	29	19
Y31-01	1/8	11	33	19
Y31-02	1/4	11	33	19
Y41-02	1/4	14	39	24
Y41-03	3/8	14	39	24
Y51-02	1/4	14	24	41
Y51-03	3/8	14	24	41
Y61-03	3/8	15	30	50.5
Y61-04	1/2	15	30	50.5

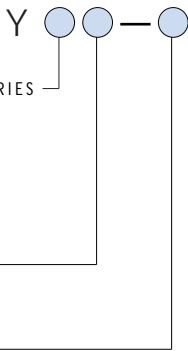
DIMENSIONS
X TAKE OFF

Fits between modular units
using 'Y' type connectors



Model	Port Size	A	B	C	D
Y14-M5	M5	23	16	14	25
Y24-01	1/8	40	40	22	40
Y24-02	1/4	40	40	22	40
Y34-02	1/8	49	43	28	48
Y44-02	1/4	60	48	36	54
Y44-03	3/8	60	48	36	54
Y54-03	3/8	72	62	40	62
Y54-04	1/2	72	62	40	62

How To
ORDER
"T" TAKE-OFF



APPLICABLE FRL SERIES

- 1 1000
2 2000
3 3000
4 4000
5 4000-06
6 5000, 6000

TAKE-OFF TYPE

- 1 "T" Type
4 "X" Type

PORT SIZE

- M5 ... M5 x 0.8
01 ... Rc 1/8
02 ... Rc 1/4
03 ... Rc 3/8
04 ... Rc 1/2

STOCKED PRODUCTS
FOR A LIST OF STOCKED PRODUCTS,
PLEASE SEE THE CURRENT SMC PRICE LIST



FOR FURTHER TECHNICAL
DETAILS ON THIS
PRODUCT REQUEST
CATALOGUE REFERENCE
E5G