

Features:

- ☐ Burst Firing and Phase Angle control versions
- ☐ Directly mounted to SSR
- ☐ LED output indication
- ☐ Remote or local control

BF100 Series modules are time proportional "Burst Firing" controllers for use with zero crossing solid state relays which provide multiples of whole cycles to the load over a pre-selected period of 4secs or 400msecs (suffix F) in increments of 200 or 20 cycles. Burst Firing is ideally suited for the control of long time constant loads such as heating elements. The technique reduces radiated and conducted interference to a minimal level.

PA100 Series modules are phase angle controllers used in conjunction with phase controllable (suffix -10) solid state relays. Effectively they allow variation of voltage to an ac load from zero to full supply voltage by conducting for a variable set period of 0-180° in each mains half cycle.

Both types are available with industry standard 4-20mA or 0-10V control inputs, and are mounted directly to the SSR input terminals. The modules require an external supply voltage of 24V ac or dc.

An internal 10V dc power source allows manual control using a potentiometer, if required. BF100 Series is also available for use with zero crossing three phase solid state relays (suffix 3)

Part Number	Burst Firing BF100	Phase Angle PA100
SPECIFICATIONS		
Control Signal	0-10V (Zin 100Kohm) - Letter V 4-20mA (Zin 330ohm) - Letter C	
Output	0-200 cycles 0-20 cycles (suffix F)	0-180° electrical
Temperature Operating	0 to +50°C	
Temperature Storage	-10 to +80°C	
Output	10V to SSR input terminals	
Cycle Time at Half-power	2sec (200mS suffix F)	-
Frequency Operating	47 to 53Hz	50±3Hz (60±3Hz suffix 6)
Auxiliary supply	24Vac ±10% max. 80mA	
Local Control	10K ohm potentiometer	
Transfer Characteristics	Time Proportional to 0-10V I/P	Phase Angle Linearly Proportional I/P

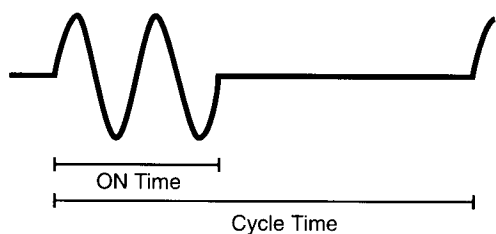
Notes:

BF100V - 0-10V input
 BF100C - 4-20mA input
 PA100V - 0-10V input
 PA100C - 4-20mA input

add suffix F for fast cycle time, add suffix 3 for 3 phase SSR
 add suffix 6 for 60Hz operation

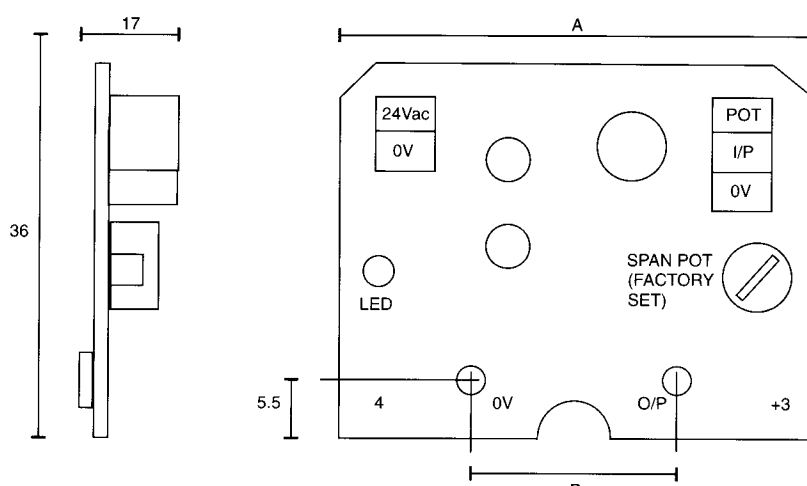
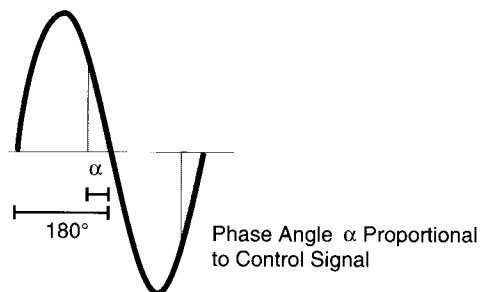
ORDERING EXAMPLE: BF100C-F3 has 4-20mA input, fast cycle time (200ms half-power), for use with 3 phase SSR

Burst Firing Control BF100



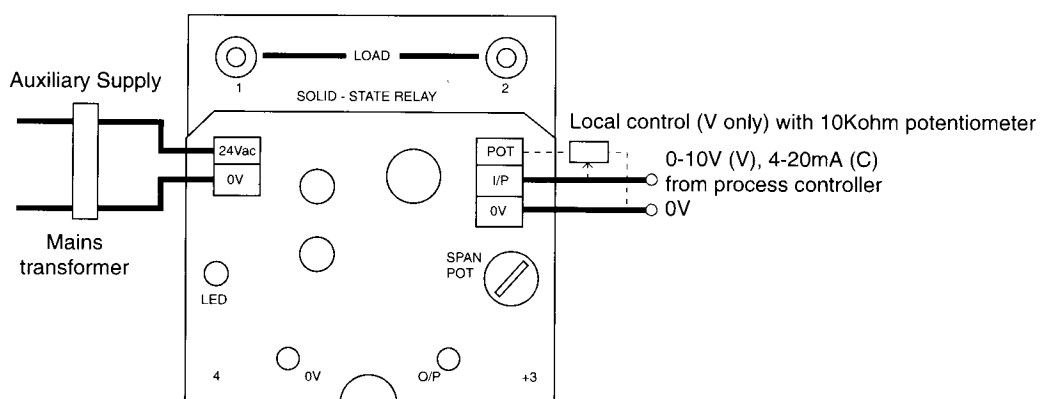
ON Time Proportional to Control Signal

Phase Angle Control PA100



PA100 - A=55, B=25
BF100 - A=45, B=25 (SINGLE PHASE), B=20 (THREE PHASE)

All dimensions in mm



Crydom Europe

7 Redlands Centre, Coulsdon, Surrey CR5 2HT Tel: 081 763 0550 Fax: 081 763 0499
Rennweg 61, 84034 Landshut, Germany Tel: 0871 6 69 59 Fax: 0871 6 73 04