

1,024/2,048/4,096-Bit Serial Electrically Erasable PROM

BR24C01A/BR24C01AF BR24C02/BR24C02F BR24C04/BR24C04F

●Features

- Low power CMOS technology
- 2.7V to 5.5V Operation
- Two wire serial interface bus I²C™ compatible
- Low power consumption
 - 0.2mA (typ.) active current : 5V
 - 1.0 μ A (typ.) standby current : 5V
- Automatic Word Address Incrementing
 - Sequential register read
- Automatic erase-before-write
- Page write buffer for up to 4 bytes : BR24C01A/AF
up to 4 bytes : BR24C02/F
up to 16 bytes : BR24C04/F
- Hardware and software write protection
 - Defaults to write-disabled state at power up
 - Software instructions for write-enable/disable
 - Vcc lockout inadvertent write protection
- Noise filters at SCL and SDA pins
- 8-pin DIP/8-pin SOP packages
- 100,000 ERASE/WRITE cycles
- 10 years Data Retention

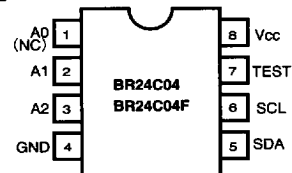
●Pin configurations



●Pin names

Pin Name	Function
A0, A1, A2	Slave address setting pin
SCL	Serial data clock
SDA	Serial data input/output
TEST	GND connection
Vcc	Power supply
GND	Ground

●Pin configurations



●Pin names

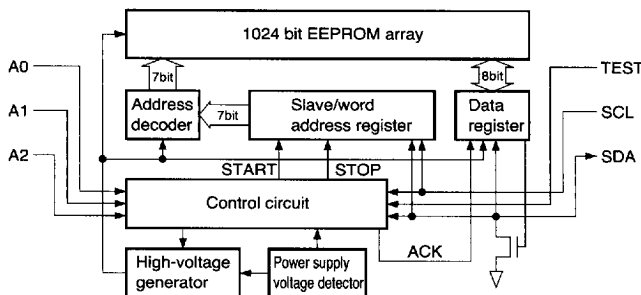
Pin Name	Function
A0	NC
A1, A2	Slave address setting pin
SCL	Serial data clock
SDA	Serial data input/output
TEST	GND connection
Vcc	Power supply
GND	Ground

7828999 0021369 469

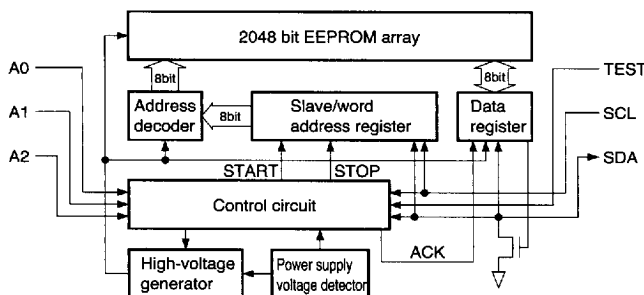
The BR24C01A/AF, BR24C02/F, and BR24C04/F are 2-wire serial EEPROMs which are electrically programmable. The configurations are as follows :

BR24C04/F : 512 × 8 bit 4K serial EEPROM

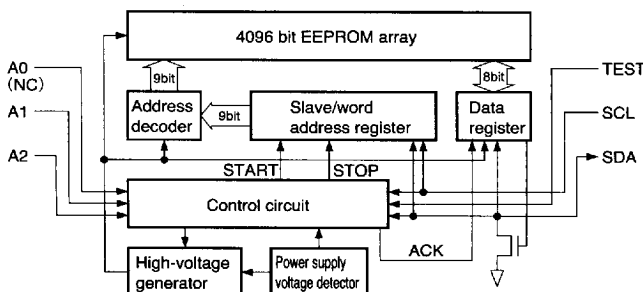
BR24C01A/AF



BR24C02/F



BR24C04 / F



RGHT

●Absolute maximum ratings (Ta=25°C)

Parameter	Symbol	Limits		Unit
Applied voltage	V _{CC}	-0.3~6.5		V
Power dissipation	P _d	DIP8 pin	500* ¹	mW
		SOP8 pin	350* ²	
Storage temperature	T _{stg}	-65~125		°C
Operating temperature	T _{opr}	-40~ 85		°C
Terminal voltage	—	-0.3~V _{CC} +0.3		V

*1 Reduced by 5.0mW for each increase in Ta of 1°C over 25°C.

*2 Reduced by 3.5mW for each increase in Ta of 1°C over 25°C.

●Recommended operating conditions (Ta=25°C)

Parameter	Symbol	Limits	Unit
Power supply voltage	V _{CC}	2.7~5.5 (WRITE)	V
		2.7~5.5 (READ)	V
Input voltage	V _{IN}	0~V _{CC}	V

●Electrical characteristics

DC characteristics (Unless otherwise specified, Ta=40 to 85°C, V_{CC}=2.7 to 5.5V)

Parameter	Symbol	Min.	Typ.	Max.	Unit	Conditions
"H" input voltage	V _{IH}	0.7V _{CC}	—	—	V	
"L" input voltage	V _{IL}	—	—	0.3V _{CC}	V	
"L" output voltage	V _{OL}	—	—	0.4	V	I _{OL} =3.0mA (SDA)
Input leakage current	I _{LI}	-10	—	10	μA	V _{IN} =0V~V _{CC}
Output leakage current	I _{LO}	-10	—	10	μA	V _{OUT} =0V~V _{CC}
Operating current consumption	I _{CC}	—	—	1.0	mA	V _{CC} =5.5V, f _{SCL} =100kHz
Standby current	I _{SB}	—	—	2.0	μA	V _{CC} =5.5V, SDA · SCL=V _{CC}
SCL frequency	f _{SCL}	—	—	100	KHZ	

7828999 0021371 017

Operating timing characteristics (Unless otherwise specified, Ta=-40 to 85°C, Vcc=2.7 to 5.5V)

Parameter	Symbol	Min.	Typ.	Max.	Unit
Data clock HIGH time	t _{HIGH}	4.0	—	—	μS
Data clock LOW time	t _{LOW}	4.7	—	—	μS
SDA/SCL rise time	t _R	—	—	1.0	μS
SDA/SCL fall time	t _F	—	—	0.3	μS
Start condition hold time	t _{HD} : STA	4.0	—	—	μS
Start condition setup time	t _{SU} : STA	4.7	—	—	μS
Input data hold time	t _{HD} : DAT	0	—	—	nS
Input data setup time	t _{SU} : DAT	250	—	—	nS
Output data delay time	t _{PD}	0.3	—	3.5	μS
Output data hold time	t _{DH}	0.3	—	—	μS
Stop condition setup time	t _{SU} : STO	4.7	—	—	μS
Bus open time before start of transfer	t _{BUF}	4.7	—	—	μS
Internal write cycle time *1 *2	t _{WR1}	—	—	10	mS
	t _{WR2}	—	—	25	mS
Noise erase valid time (SCL/SDA pins)	t _I	—	—	0.1	μS

*1 V_{CC} = 4.5 to 5.5 V*2 V_{CC} = 2.7 to 4.5 V

©This product is not designed to withstand radiation.

2 wire serial (I²C BUS Type)

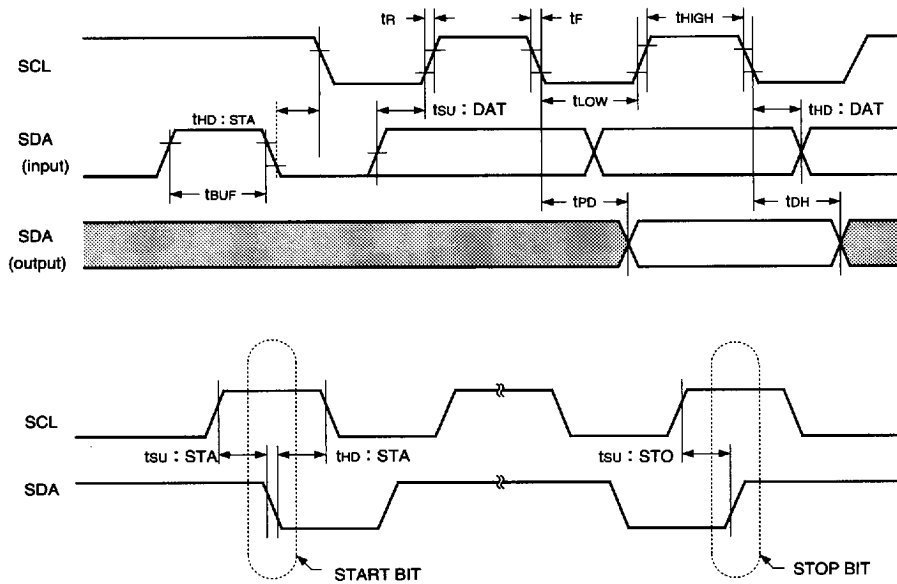
EEPROM

7828999 0021372 T53

ROHM

121

●Timing chart



- Data is read on the rising edge of SCL.
- Data is output in synchronization with the falling edge of SCL.

Fig.1 Synchronized data input/output timing

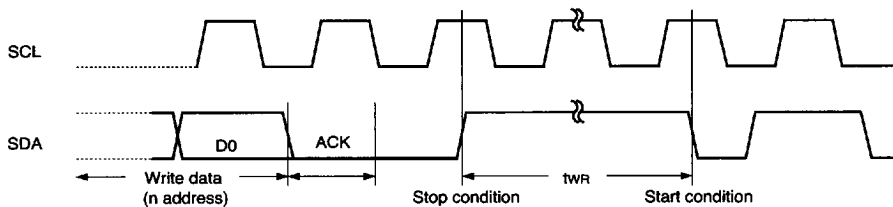


Fig.2 Write cycle timing

●Circuit operation

(1) Start condition (recognition of start bit)

Before executing any command, when SCL is HIGH, a start condition (start bit) is required to cause SDA to fall from HIGH to LOW. This IC is designed to constantly detect whether there is a start condition (start bit) for the SDA and SCL line, and no commands will be executed unless this condition is satisfied.

(See Figure 1 for the synchronized data input/output timing.)

(2) Stop condition (recognition of stop bit)

To stop any command, a stop condition (stop bit) is required. A stop condition is achieved when SDA goes from LOW to HIGH while SCL is HIGH. This enables commands to be completed.

(See Figure 1 for the synchronized data input/output timing.)

(3) Precautions concerning write commands

In the WRITE mode, the transferred data is not written to the memory unless the stop bit is executed.

(4) Device addressing

◇With the BR24C01A/AF and BR24C02/F

Make sure the slave address is output from the master immediately after the start condition.

The upper four bits of the slave address are used to determine the device type. The device code for this IC is fixed at "1010".

The next three bits of the slave address (A2, A1, A0 ... device address) are used to select the device. This IC can address up to eight devices on the same bus. The lowermost bit of the slave address (R/W ... READ/WRITE) is used to set the write or read mode as follows.

R/W set to 0 ... Write

(Random read word address setting is also 0)

R/W set to 1 ... Read

1010	A2	A1	A0	R / W
------	----	----	----	-------

◇With the BR24C04/F

Make sure the slave address is output from the master in continuation with the start condition.

The upper four bits of the slave address are used to determine the device type. The device code for this IC is fixed at "1010".

The next two bits of the slave address (A2, A1 ... device address) are used to select the device. This IC can address up to four devices on the same bus. The next bit of the slave address (PS ... Page Select) is used to select the page. As shown below, it can write to or read from any of the 256 words in the two pages in memory.

PS set to 0 ... Page 1 (000 to 0FF)

PS set to 1 ... Page 2 (100 to 1FF)

The lowermost bit of the slave address (R/W ... READ/WRITE) is used to set the write or read mode as follows.

R/W set to 0 ... Write

(Random read word address setting is also 0)

R/W set to 1 ... Read

1010	A2	A1	PS	R / W
------	----	----	----	-------

●Circuit operation

(5) ACK signal

The acknowledge signal (ACK signal) is determined by software and is used to indicate whether or not a data transfer is proceeding normally. The transmitting device, whether the master or slave, opens the bus after an 8-bit data output (μ -COM when a write or read command of the slave address input; this IC when reading data).

For the receiving device during the ninth clock cycle, SDA is set to LOW and an acknowledge signal (ACK signal) is sent to indicate that it received the 8-bit data (this IC when a write command or a read command of the slave address input, μ -COM when a read command data output).

This IC outputs a LOW acknowledge signal (ACK signal) after recognizing the start condition and slave address (8 bits).

When data is being written to this IC, a LOW acknowledge signal (ACK signal) is output after the receipt of each eight bits of data (word address and write data).

When data is being read from the IC, eight bits of data (read data) are output and the IC waits for a returned LOW acknowledge signal (ACK signal). When an acknowledge signal (ACK signal) is detected and a stop condition is not sent from the master (μ -COM) side, the IC continues to output data. If an acknowledge signal (ACK signal) is not detected, the IC interrupts the data transfer and ceases reading operations after recognizing the stop condition (stop bit). The IC then enters the waiting or standby state.

(See Figure 3 for acknowledge signal (ACK signal) response.)

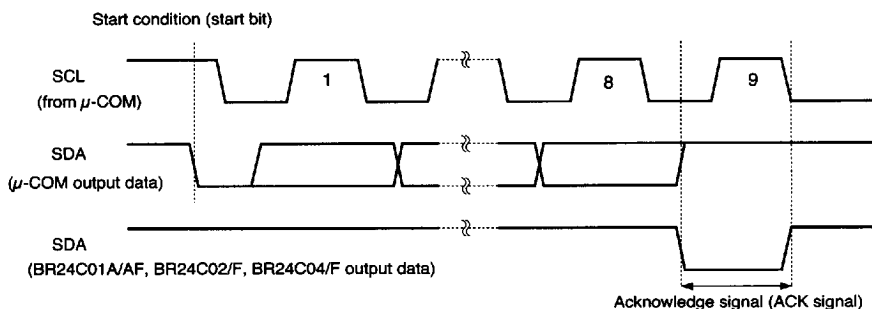


Fig.3 Acknowledge (ACK signal) response
(during write and read slave address input)

(6) Byte write

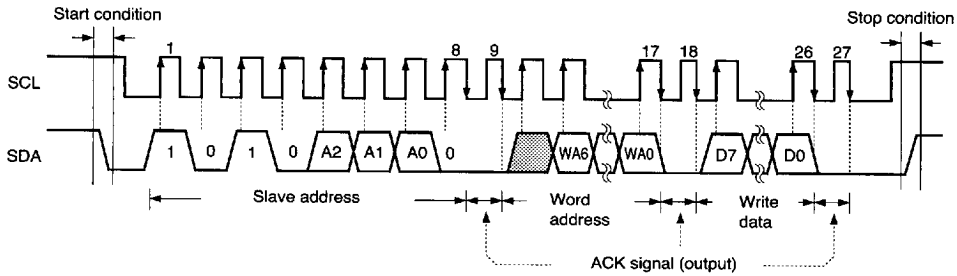


Fig.4 Byte write cycle (BR24C01A/AF)

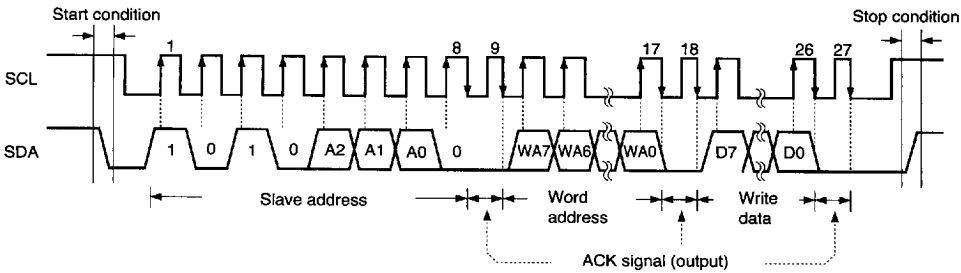


Fig.5 Byte write cycle (BR24C02/F)

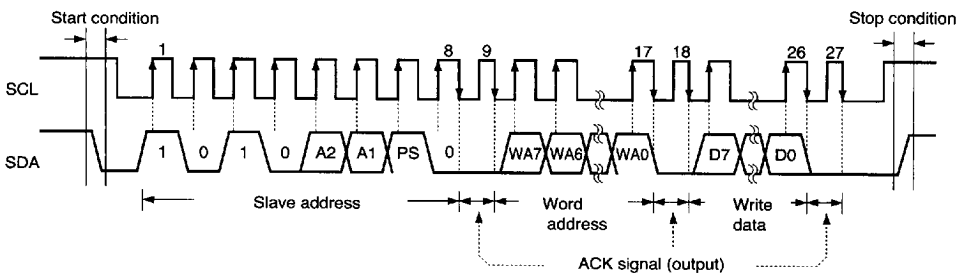


Fig.6 Byte write cycle (BR24C04/F)

- Data is written to the address designated by the word address (n address).
- After eight bits of data are input, the data is written to the memory cell by issuing the stop bit.

● Circuit operation

(7) Page write

◇ BR24C01A/AF

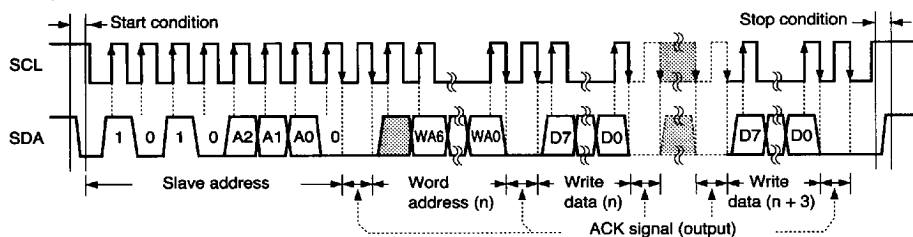


Fig.7 Page write cycle (BR24C01A/AF)

- A 4-byte write is possible using this command.
- The page write command arbitrarily sets the upper five bits (WA6 to WA2) of the word address. The lower two bits (WA1 and WA0) can write up to four bytes of data with the address being incremented internally.

◇ BR24C02/F

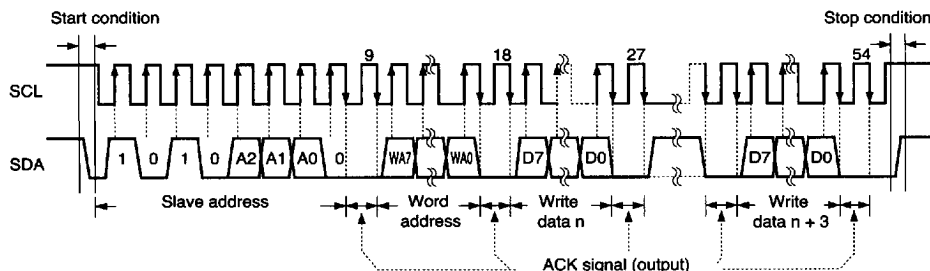


Fig.8 Page write cycle (BR24C02/F)

- A 4-byte write is possible using this command.
- The page write command arbitrarily sets the upper six bits (WA7 to WA2) of the word address. The lower two bits (WA1 and WA0) can write up to four bytes of data with the address being incremented internally.

◇ BR24C04/F

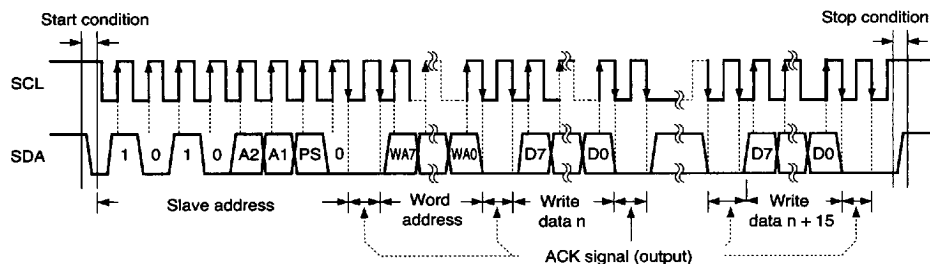


Fig.9 Page write cycle (BR24C04/F)

- A 16-byte write is possible using this command.
- The page write command arbitrarily sets the upper four bits (WA7 to WA4) of the word address. The lower four bits (WA3 to WA0) can write up to 16 bytes of data with the address being incremented internally.

7828999 0021377 535

(8) Current read

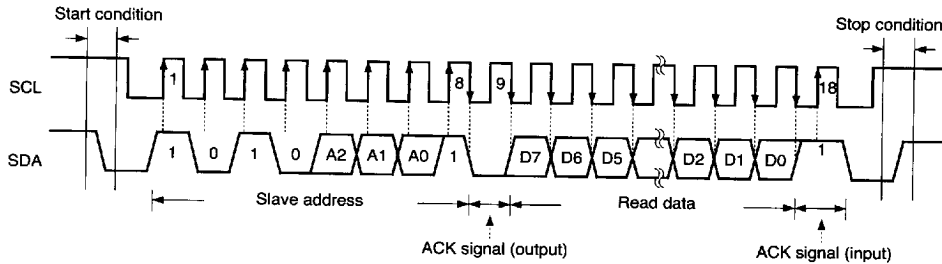


Fig.10 Current read cycle (BR24C01A/AF)

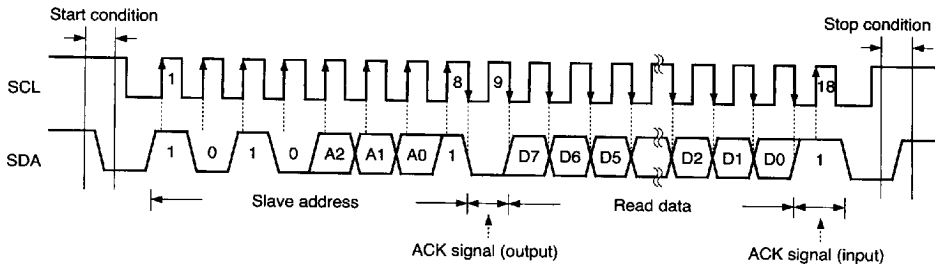


Fig.11 Current read cycle (BR24C02/F)

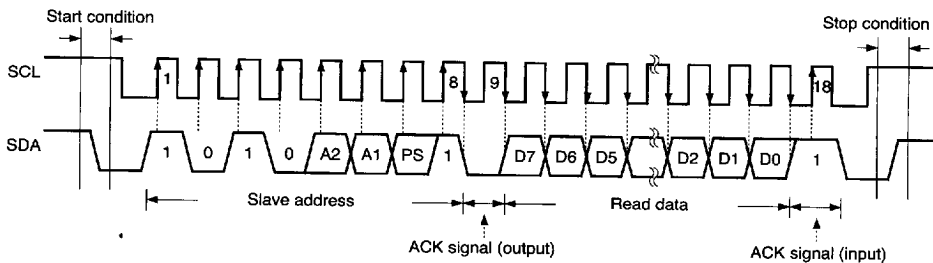


Fig.12 Current read cycle (BR24C04/F)

- This IC increments the address by one position by using the internal circuit address count. It records the final word address (n address) of the executed write - read command.
- This command reads the data of the next word address (n + 1 address) of the final write word address after the execution of the previous command.
- When an ACK signal LOW is detected after D0 and a stop condition is not sent from the master (μ -COM), the next word address data can be read. [All words are read enabled]
(See Figures 16 to 18 for the sequential read cycles.)
- This command is ended by inputting HIGH to the ACK signal after D0 and raising the SDA signal (stop condition) by setting SCL to HIGH.

7828999 0021378 471

ROHM

● Circuit operation
(9) Random read

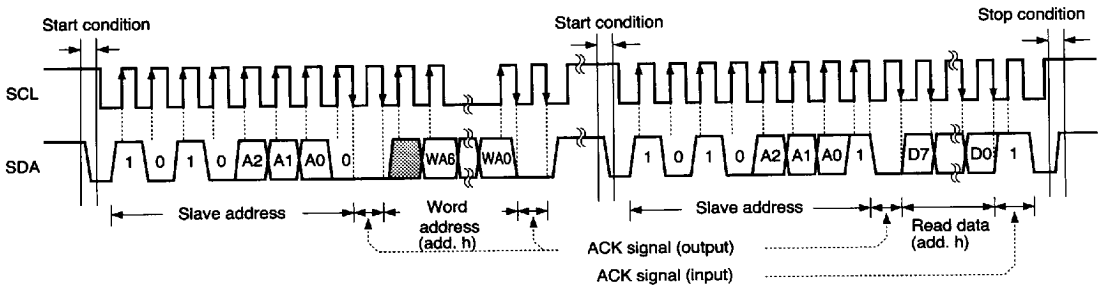


Fig.13 Random read cycle (BR24C01A/AF)

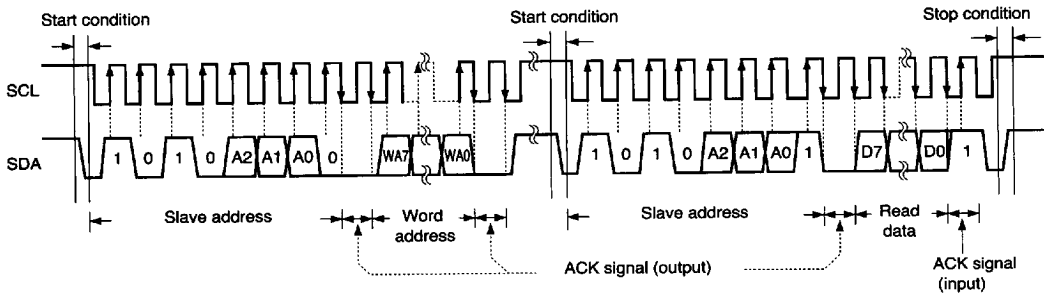


Fig.14 Random read cycle (BR24C02/F)

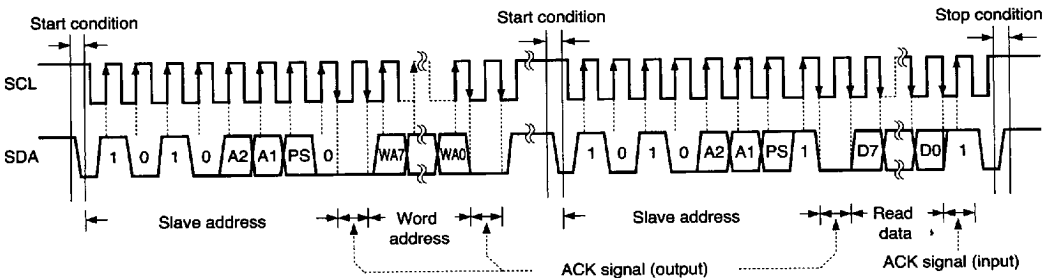
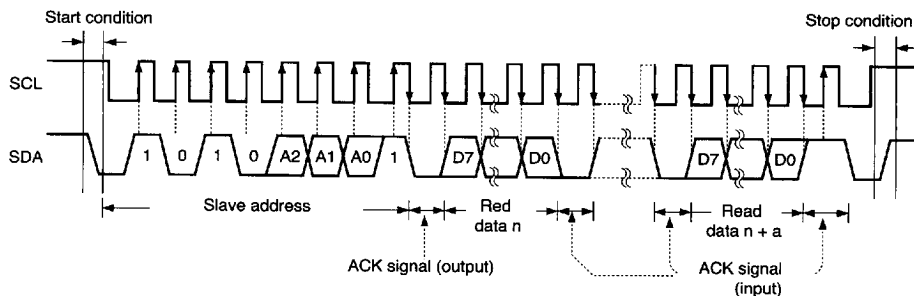
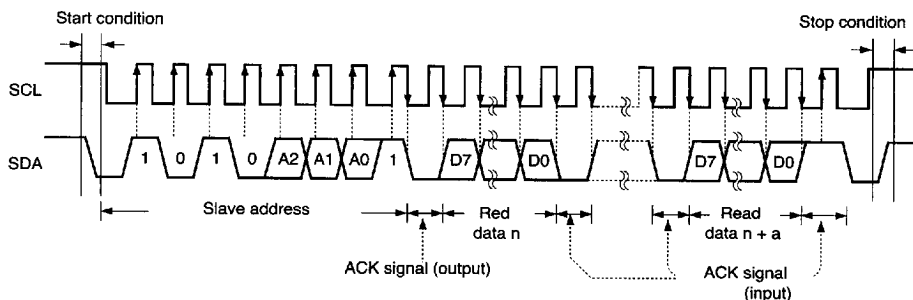
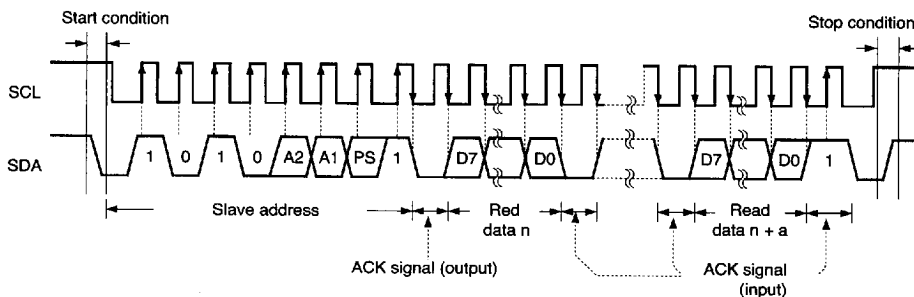


Fig.15 Random read cycle (BR24C04/F)

- This command can read the designated word address data.
- When an ACK signal LOW is detected after D0 and a stop condition is not sent from the master (μ -COM), the next word address data can be read. [All words all read enabled]
(See Figures 16 to 18 for the sequential read cycles.)
- This command is ended by inputting a HIGH signal to the ACK signal after D0 and raising the SDA signal (stop condition) by raising SCL to HIGH.

7828999 0021379 308

(10) Sequential read

Fig.16 Sequential read cycle (BR24C01A/AF)
(Example: For a current read)Fig.17 Sequential read cycle (BR24C02/F)
(Example: For a current read)Fig.18 Sequential read cycle (BR24C04/F)
(Example: For a current read)

- When an ACK signal LOW is detected after D0 and a stop condition is not sent from the master (μ -COM), the next word address data can be read. [All words can be read]
- This command is ended by inputting a HIGH signal to the ACK signal after D0 and raising the SDA signal (stop condition) using the SCL signal HIGH.
- Sequential reading can also be done with a random read.

● Operation notes

○ During power rise

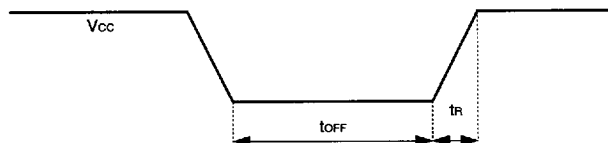
During power rise, the V_{CC} may rise passing through the low voltage domain in which the IC internal circuit does not work. For this reason, there is a risk of misoperation when the power rises without full IC internal reset.

To prevent this, pay attention to the following points during a power rise.

1. Set SCL = SDA = "HIGH"
2. Raise the power so as to activate the Power On Reset (P.O.R.) circuit.

Follow the steps below as to operate the P.O.R. circuit properly.

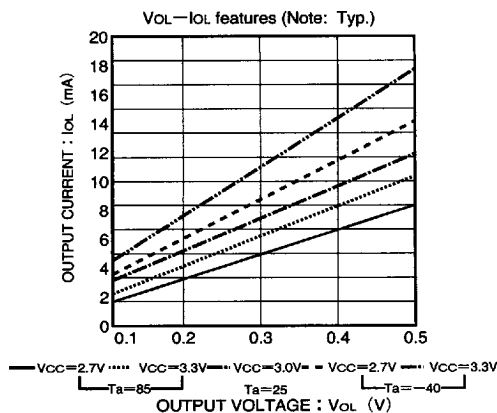
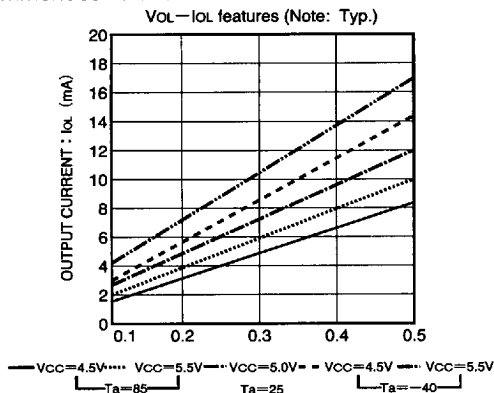
1. Set the power rise time (t_R) to within 10ms.
2. Set the OFF domain for once power has been cut to 100ms minimum.



○ SDA terminal pull-up resistance

The SDA terminal is an open drain output. Consequently, it requires an external pull-up resistance. The appropriate pull-up resistance value is selected from the IC VOL-IOL features, which have been appended as measuring data, as well as VIL and IIL and other personal icons that control the IC in question.

Recommended values 2.0 k to 10 k Ω



Note: All memory array data are set to "FF" status at time of shipping.

● External dimensions (Units: mm)

