

Magnetic Amplifier Controller

FEATURES

- Independent 1% Reference
- Two Uncommitted, Identical Operational Amplifiers
- 100mA Reset Current Source with -120V Capability
- 5V to 40V Analog Operation
- 5W DIL Package

DESCRIPTION

The UC1838A family of magnetic amplifier controllers contains the circuitry to generate and amplify a low-level analog error signal along with a high voltage-compliant current source. This source will provide the reset current necessary to enable a magnetic amplifier to regulate and control a power supply output in the range of 2A to 20A.

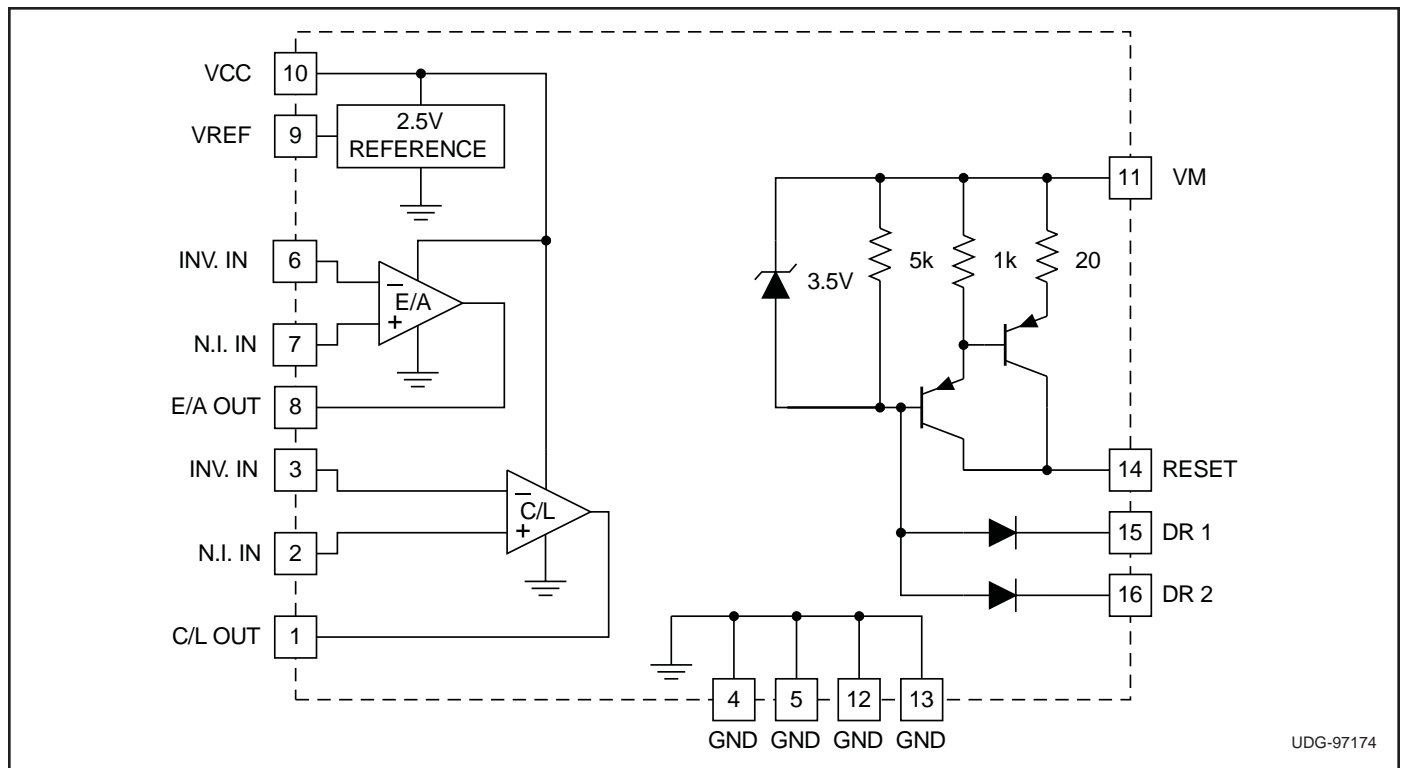
By controlling the reset current to a magnetic amplifier, this device will define the amount of volt-seconds the magnetic amplifier will block before switching to the conducting state. Magnetic amplifiers are ideal for post-regulators for multiple-output power supplies where each output can be independently controlled with efficiencies up to 99%. With a square or pulse-width-modulated input voltage, a magnetic amplifier will block a portion of this input waveform, allowing just enough to pass to provide a regulated output. With the UC1838A, only the magnetic amplifier coil, three diodes, and an output L-C filter are necessary to implement a complete closed-loop regulator.

The UC1838A contains a precision 2.5V reference, two uncommitted high-gain op amps and a high-gain PNP-equivalent current source which can deliver up to 100mA of magnetic amplifier reset current and with -120 volt capability.

These devices are available in a plastic "bat-wing" DIP for operation over a -20°C to +85°C temperature range and, with reduced power, in a hermetically sealed cerdip for -55°C to +125°C operation. Surface mount versions are also available.

This improved "A" version replaced the non "A" version formerly introduced.

BLOCK DIAGRAM



UDG-97174

ABSOLUTE MAXIMUM RATINGS

Supply Voltage, V_{CC}	40V
Magnetic Amp. Source Voltage, V_M	40V
Reset Output Voltage, V_R	-120V
Total Current Source Voltage, $V_M - V_R$	-140V
Amplifier Input Range	-0.3V to V_{CC}
Reset Input Current, I_{DR}	-10mA
Power Dissipation at $T_A = 25^\circ\text{C}$	
Q, N, DP Package	2W
J, L Package	1W
Power Dissipation at T (leads/case) = 25°C	
Q, N, DP Package	5W
J, L Package	2W
Operating Temperature Range	-55°C to $+125^\circ\text{C}$
Storage Temperature Range	-65°C to $+150^\circ\text{C}$
Lead Temperature (Soldering, 10 sec)	300°C

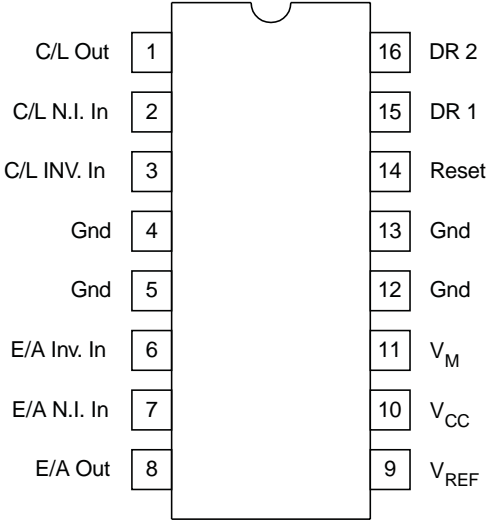
Note: All voltages are with respect to ground pins. All currents are positive into the specified terminal. Consult Packaging section of Databook for thermal limitations and considerations of package.

ORDERING INFORMATION

	TEMPERATURE RANGE	PACKAGE
UC1838AJ UC1838AL	-55°C to $+125^\circ\text{C}$	Ceramic Dip CLCC
UC2838ADP UC2838AN UC2838AQ	-20°C to $+85^\circ\text{C}$	Power SOIC Plastic Dip PLCC
UC3838ADP UC3838AN UC3838AQ	0°C to $+70^\circ\text{C}$	Power SOIC Plastic Dip PLCC

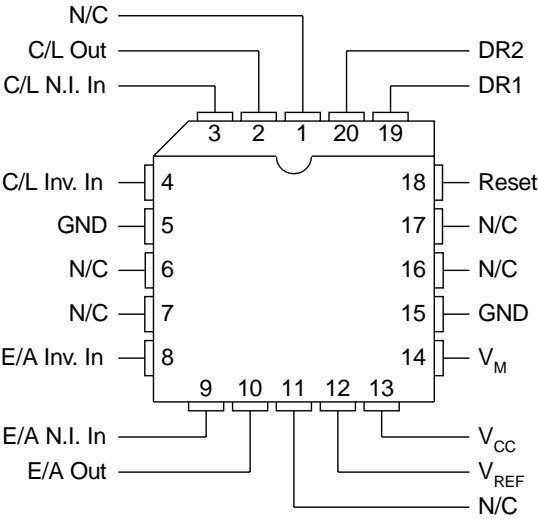
CONNECTION DIAGRAMS

DIL-16, SOIC-16 (TOP VIEW) J or N Package, DP Package



Note: All four ground pins must be connected to a common ground

PLCC-20, LCC-20 (TOP VIEW) Q, L Packages

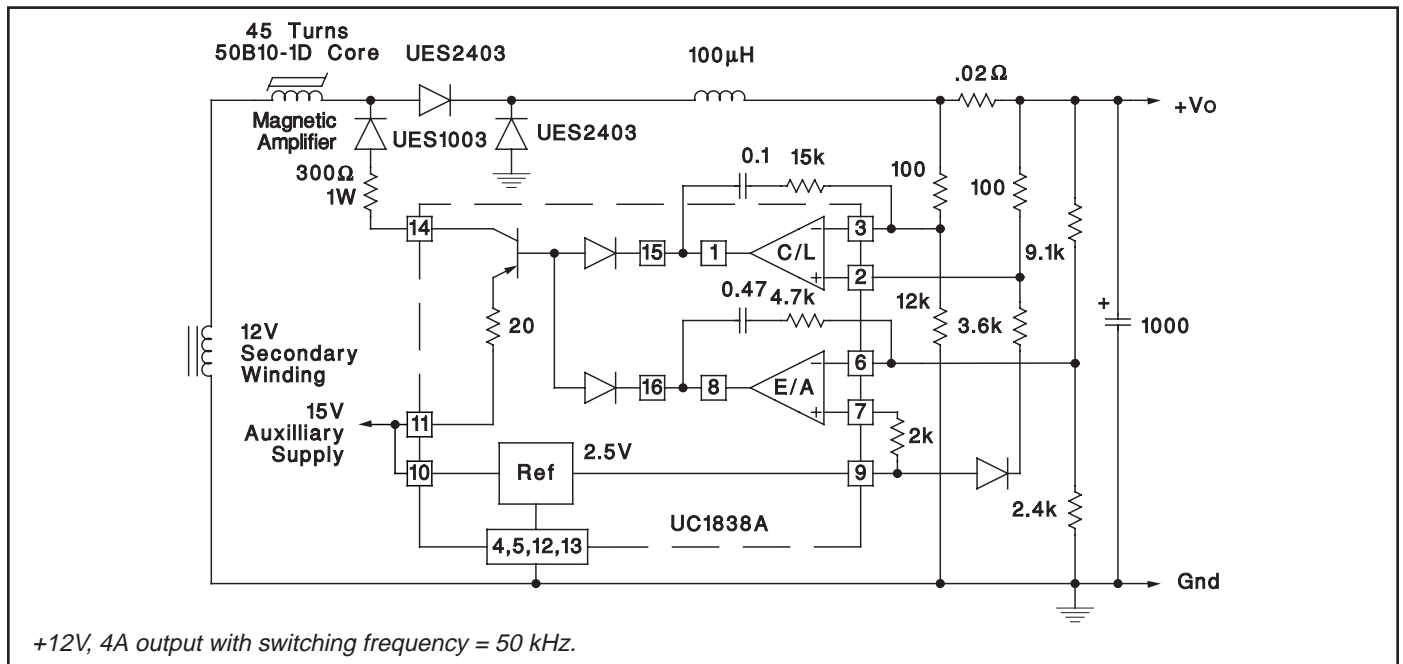


ELECTRICAL CHARACTERISTICS: Unless otherwise stated, these specifications apply for $T_A = -55^\circ\text{C}$ to $+125^\circ\text{C}$ for the UC1838A, -20°C to $+85^\circ\text{C}$ for the UC2838A, and 0°C to $+70^\circ\text{C}$ for the UC3838A, $V_{CC} = 20\text{V}$, $V_M = 5\text{V}$, $T_A = T_J$.

PARAMETER	TEST CONDITIONS	UC1838A / UC2838A			UC3838A			UNITS
		MIN	TYP	MAX	MIN	TYP	MAX	
Reference Section								
Supply Current	V _{CC} = V _M = 40V		4	8		4	8	mA
Reference Output	T _A = 25°C	2.47	2.5	2.53	2.45	2.5	2.55	V
Line Regulation	V _{CC} = 5 to 30V		1	5		1	10	mV
Load Regulation	I _O = 0 to −2mA		5	20		5	20	mV
Short Circuit Current	V _{REF} = 0V		−30	−60		−30	−60	mA
Temperature Stability*	Over Operating Temp. Range		15	25		10	25	mV
Amplifier Section (Each Amplifier)								
Offset Voltage	V _{CM} = 2.5V			5			10	mV
Input Bias Current	V _{IN} = 0V			−1			−1	μA
Input Offset Current				100			100	nA
Minimum Output Swing		0.4		18	0.4		18	V
Output Sink Current	V _O = 5V	1	10	30	1	10	30	mA
Output Source Current	V _O = 0V	−1	−10	−20	−1	−10	−20	mA
A _{VOL}	V _O = 1 to 11V	100	120		100	120		dB
C _{MRR}	V _{IN} = 1 to 11V	70	80		70	80		dB
P _{SRR}	V _{CC} = 10 to 20V	70	100		70	100		dB
Gain Bandwidth*		0.6	0.8		0.6	0.8		MHz
Reset Drive Section								
Input Leakage	V _{DR} = 40V			10			10	μA
Output Leakage	V _R = −120V			−100			−100	μA
Input Current	I _R = −50mA		−1	−2		−1	−2	mA
Maximum Reset Current	I _{DR} = −3mA	−100	−120	−200	−100	−120	−200	mA
Transconductance	I _R = −10 to −50mA	.03	.042	.055	.03	.042	.055	A/V

* These parameters are guaranteed by design but not 100% tested in production.

TYPICAL APPLICATION



APPLICATION INFORMATION

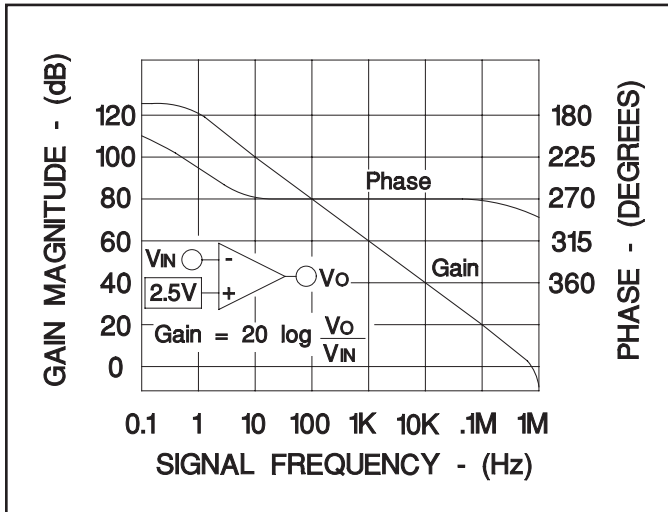


Figure 1. Amplifier open loop response.

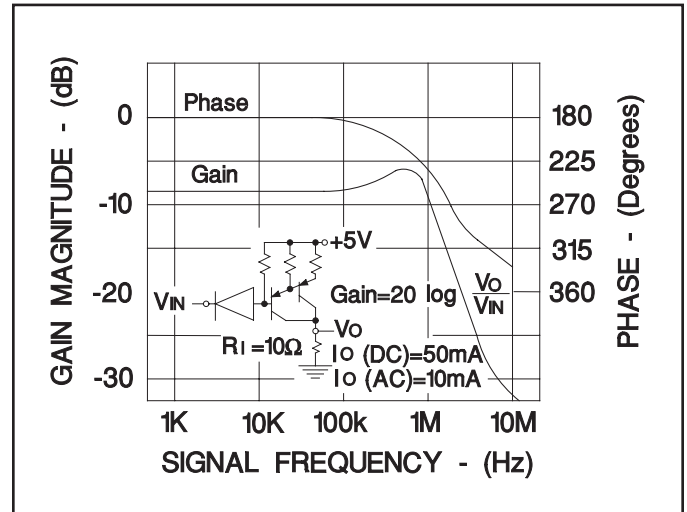


Figure 4. Reset driver response.

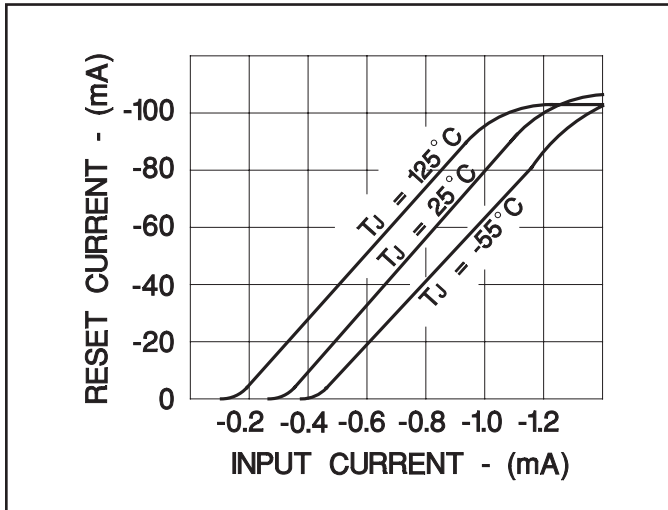


Figure 2. Reset driver-input current.

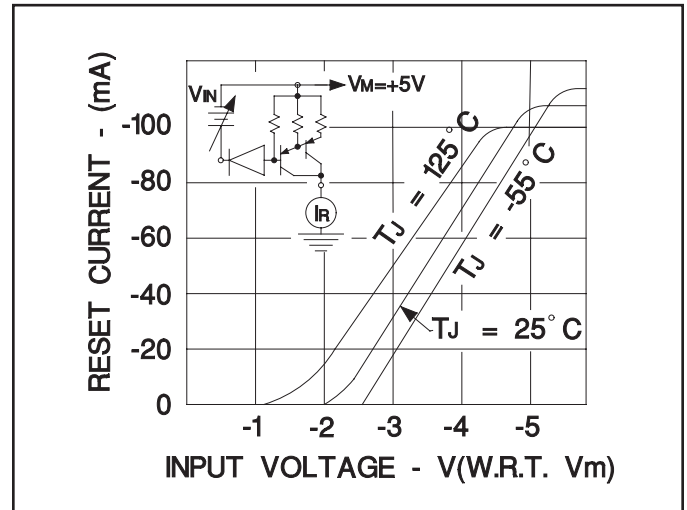


Figure 5. Reset driver-input voltage.

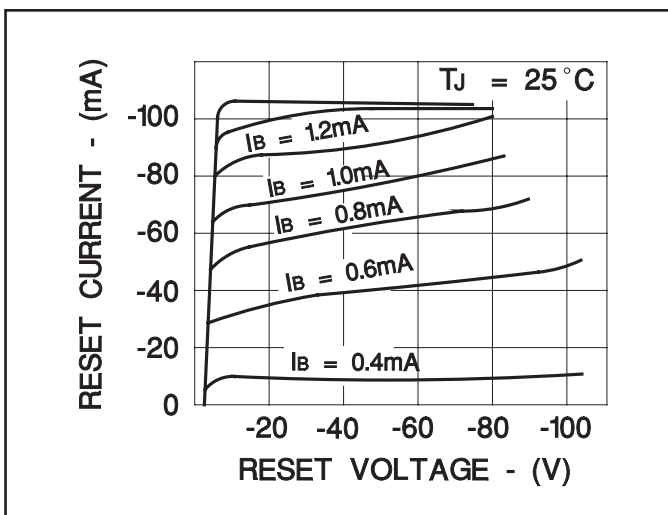


Figure 3. Reset driver-output impedance.

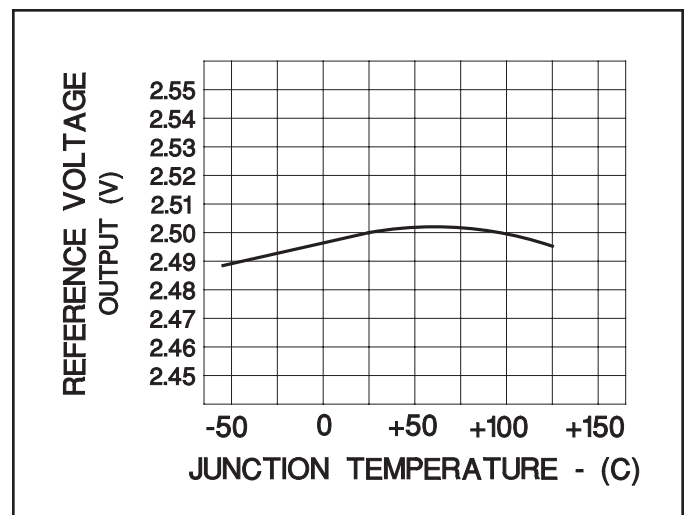


Figure 6. Reference temperature coefficient.

IMPORTANT NOTICE

Texas Instruments and its subsidiaries (TI) reserve the right to make changes to their products or to discontinue any product or service without notice, and advise customers to obtain the latest version of relevant information to verify, before placing orders, that information being relied on is current and complete. All products are sold subject to the terms and conditions of sale supplied at the time of order acknowledgement, including those pertaining to warranty, patent infringement, and limitation of liability.

TI warrants performance of its semiconductor products to the specifications applicable at the time of sale in accordance with TI's standard warranty. Testing and other quality control techniques are utilized to the extent TI deems necessary to support this warranty. Specific testing of all parameters of each device is not necessarily performed, except those mandated by government requirements.

CERTAIN APPLICATIONS USING SEMICONDUCTOR PRODUCTS MAY INVOLVE POTENTIAL RISKS OF DEATH, PERSONAL INJURY, OR SEVERE PROPERTY OR ENVIRONMENTAL DAMAGE ("CRITICAL APPLICATIONS"). TI SEMICONDUCTOR PRODUCTS ARE NOT DESIGNED, AUTHORIZED, OR WARRANTED TO BE SUITABLE FOR USE IN LIFE-SUPPORT DEVICES OR SYSTEMS OR OTHER CRITICAL APPLICATIONS. INCLUSION OF TI PRODUCTS IN SUCH APPLICATIONS IS UNDERSTOOD TO BE FULLY AT THE CUSTOMER'S RISK.

In order to minimize risks associated with the customer's applications, adequate design and operating safeguards must be provided by the customer to minimize inherent or procedural hazards.

TI assumes no liability for applications assistance or customer product design. TI does not warrant or represent that any license, either express or implied, is granted under any patent right, copyright, mask work right, or other intellectual property right of TI covering or relating to any combination, machine, or process in which such semiconductor products or services might be or are used. TI's publication of information regarding any third party's products or services does not constitute TI's approval, warranty or endorsement thereof.