

**LB1927****SANYO****Three-Phase Brushless Motor Driver  
for Office Automation Equipment****Preliminary****Overview**

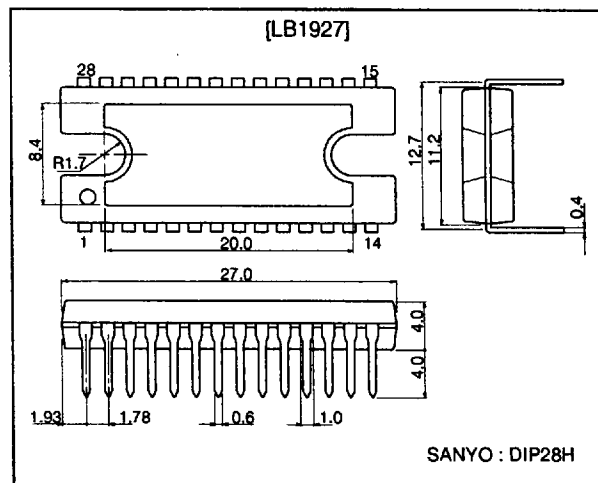
The LB1927 is a three-phase brushless motor driver well suited for drum and paper feed motors in laser printers, plain-paper copiers and other office automation equipment. Direct PWM drive allows control with low power losses. Peripheral circuitry including speed control circuit and FG amplifier is integrated, thus allows drive circuit to be constructed with a single chip.

**Functions and Features**

- Three-phase bipolar drive (30V, 2.5A)
- Direct PWM drive technique
- Built-in diode for absorbing output lower-side kickback
- Speed discriminator and PLL speed control
- Speed lock detection output
- Built-in forward/reverse switching circuit
- Built-in protection circuitry includes current limiter, overheat protection, motor restraint protection, etc.

**Package Dimensions**

unit: mm

**3147B-DiP28H****Specifications****Absolute Maximum Ratings at Ta = 25°C**

Parameter	Symbol	Conditions	Ratings	Unit
Maximum supply voltage	Vcc max		30	V
Maximum output current	IO max	T ≤ 500 ms	2.5	A
Allowable power dissipation 1	Pd max 1	IC only	3	W
Allowable power dissipation 2	Pd max 2	With an arbitrary large heat sink	20	W
Operating temperature	Topr		-20 to +80	°C
Storage temperature	Tstg		-55 to +150	°C

**Allowable Operating Ranges at Ta = 25°C**

Parameter	Symbol	Conditions	Ratings	Unit
Power supply voltage range 1	Vcc		9.5 to 28	V
Regulator voltage output current	I <sub>REG</sub>		0 to -20	mA
LD output current	ILD		0 to 15	mA

■ Any and all SANYO products described or contained herein do not have specifications that can handle applications that require extremely high levels of reliability, such as life-support systems, aircraft's control systems, or other applications whose failure can be reasonably expected to result in serious physical and/or material damage. Consult with your SANYO representative nearest you before using any SANYO products described or contained herein in such applications.

■ SANYO assumes no responsibility for equipment failures that result from using products at values that exceed, even momentarily, rated values (such as maximum ratings, operating condition ranges, or other parameters) listed in products specifications of any and all SANYO products described or contained herein.

**SANYO Electric Co., Ltd. Semiconductor Company**

TOKYO OFFICE Tokyo Bldg., 1-10, 1 Chome, Ueno, Taito-ku, TOKYO, 110-8534 JAPAN

Electrical Characteristics at Ta = 25°C, Vcc = VM = 24V

Parameter	Symbol	Conditions	Ratings			Unit
			min	typ	max	
Power supply current 1	Icc1			23	30	mA
Power supply current 2	Icc2	In STOP mode		3.5		mA
[Output]						
Output saturation voltage 1	Vosat1	Io = 1.0A, Vo(SINK) + Vo(SOURCE)		2.0	2.5	V
Output saturation voltage 2	Vosat2	Io = 2.0A, Vo(SINK) + Vo(SOURCE)		2.6	3.2	V
Output leak current	Ioleak				100	μA
Lower-side diode forward voltage 1	VD1	ID = -1.0A		1.2	1.5	V
Lower-side diode forward voltage 2	VD2	ID = -2.0A		1.5	2.0	V
[5V regulator voltage output]						
Output voltage	VREG	Io = -5 mA	4.65	5.00	5.35	V
Voltage fluctuation	ΔVREG1	Vcc = 9.5 to 28V		30	100	mV
Load fluctuation	ΔVREG2	Io = -5 to -20 mA		20	100	mV
[Hall amplifier]						
Input bias current	IHB		-2	-0.5		μA
Common mode input voltage range	VICM		1.5		VREG -1.5	V
Hall input sensitivity			80			mVp-p
Hysteresis width	ΔVIN		15	24	42	mV
Input voltage L -> H	VSLH			12		mV
Input voltage H-> L	VSHL			-12		mV

Continued on next page

Continued from preceding page

Parameter	Symbol	Conditions	Ratings			Unit
			min	typ	max	
[PWM oscillator]						
Output High level voltage	VOH(PWM)		2.5	2.8	3.1	V
Output Low level voltage	VOL(PWM)		1.2	1.5	1.8	V
Oscillator frequency	f(PWM)	C = 3900 pF		18		kHz
Amplitude	V(PWM)		1.05	1.30	1.55	Vp-p
[CSD circuit]						
Operating voltage	VOH(CSD)		3.6	3.9	4.2	V
External capacitance charge current	ICHG		-17	-12	-9	μA
Operating time	T(CSD)	C = 10 μF Design target value		3.3		s
[Current limiter operation]						
Limiter	VRF	V <sub>CC</sub> -VM	0.45	0.5	0.55	V
[Thermal shutdown operation]						
Thermal shutdown operating temperature	TSD	Design target value (junction temperature)	150	180		°C
Hysteresis width	ΔTSD	Design target value (junction temperature)		50		°C
[FG amplifier]						
Input offset voltage	VIO(FG)		-10		+10	mA
Input bias current	IB(FG)		-1		+1	μA
Output High level voltage	VOH(FG)	IFGO = -0.2 mA	VREG -1.2	VREG -0.8		V
Output Low level voltage	VOL(FG)	IFGO = 0.2 mA		0.8	1.2	V
FG input sensitivity		GAIN 100 times	3			mV
Next-stage Schmitt comparator width		Design target value	100	180	250	mV
Operation frequency range					2	kHz
Open-loop gain		f(FG) = 2 kHz	45	51		dB
[Speed discriminator]						
Output High level voltage	VOH(D)	IDO = -0.1 mA	VREG -1.0	VREG -0.7		V
Output Low level voltage	VOL(D)	IDO = 0.1 mA		0.8	1.1	V
Count number				512		
[PLL output]						
Output High level voltage	VOH(P)	IPO = -0.1 mA	VREG -1.8	VREG -1.5	VREG -1.2	V
Output Low level voltage	VOL(P)	IPO = 0.1 mA	1.2	1.5	1.8	V
[Lock detection]						
Output Low level voltage	VOL(LD)	ILD = 10 mA		0.15	0.5	V
Lock range				6.25		%

Continued on next page

Continued from preceding page

Parameter	Symbol	Conditions	Ratings			Unit
			min	typ	max	
[Integrator]						
Input bias current	IB(INT)		-0.4		+0.4	μA
Output High level voltage	VOH(INT)	IINTO = -0.2 mA	VREG -1.2	VREG -0.8		V
Output Low level voltage	VOL(INT)	IINTO = 0.2 mA		0.8	1.2	V
Open-loop gain		f(INT) = 1 kHz	45	51		dB
Gain bandwidth product		Design target value		450		kHz
Reference voltage		Design target value	-5%	VREG/2	5%	V
[Crystal oscillator]						
Operating frequency range	fOSC		3		10	MHz
Low level pin voltage	VOSCL	IOSC = -0.5 mA		1.65		V
High level pin current	IOSCH	VOSC = VOSCL + 0.3V		0.4		mA
[Start/stop pin]						
High level input voltage range	VIH(S/S)		3.5		VREG	V
Low level input voltage range	VIL(S/S)		0		1.5	V
Input open voltage	VIO(S/S)		VREG -0.5		VREG	V
Hysteresis width	Δ VIN		0.35	0.50	0.65	V
High level input current	IiH(S/S)	V(S/S) = VREG	-10	0	10	μA
Low level input current	IiL(S/S)	V(S/S) = 0V	-280	-210		μA
[Forward/reverse pin]						
High level input voltage range	VIH(F/R)		3.5		VREG	V
Low level input voltage range	VIL(F/R)		0		1.5	V
Input open voltage	VIO(F/R)		VREG -0.5		VREG	V
Hysteresis width	Δ VIN		0.35	0.50	0.65	V
High level input current	IiH(F/R)	V(F/R) = VREG	-10	0	+10	μA
Low level input current	IiL(F/R)	V(F/R) = 0V	-280	-210		μA

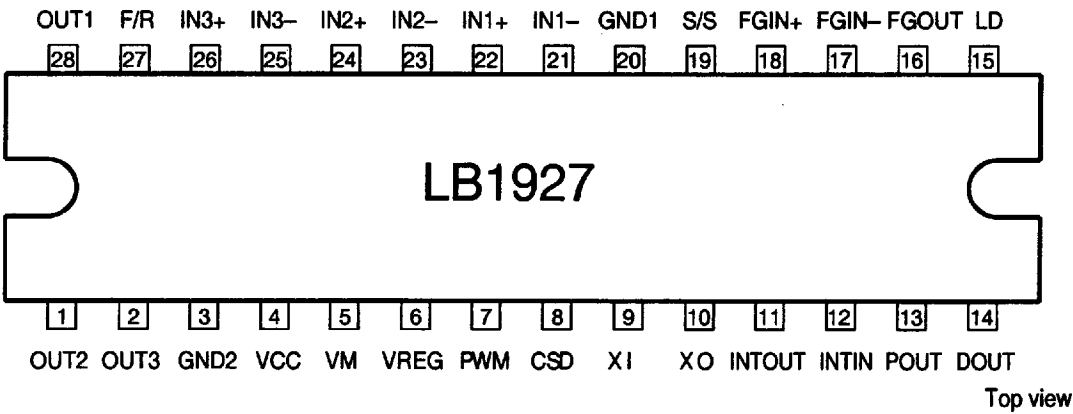
Pin Function

Pin name	Pin number	Function
IN1+, IN1-	22, 21	Hall input pin 1
IN2+, IN2-	24, 23	Hall input pin 2
IN3+, IN3-	26, 25	Hall input pin 3
OUT1	28	Output pin 1
OUT2	1	Output pin 2
OUT3	2	Output pin 3
V <sub>CC</sub>	4	Power supply pin
VM	5	Output current detector pin To detect output current as voltage, connect R <sub>f</sub> resistor between this pin and V <sub>CC</sub> .
GND1	20	Ground for circuits except output blocks
GND2	3	Ground for output blocks
PWM	7	PWM oscillation frequency setting pin
CSD	8	Restraint protection circuit operation time setting pin
INT IN	12	Integrator input pin
INT OUT	11	Integrator output pin (speed control pin)
D OUT	14	Speed discriminator output pin Acceleration: High, Deceleration: Low
P OUT	13	PLL output pin
LD	15	Lock detection pin When motor rotation is within lock range ( $\pm 6.25\%$ ): Low
FG IN+	18	FG pulse input pin (bias pin)
FG IN-	17	FG pulse input pin
FG OUT	16	FG amplifier output pin
XI	9	Crystal oscillator pin
XO	10	Connect to crystal oscillator
VREG	6	5V power supply pin (internal control circuit power supply)
S/S	19	Start/stop control pin Start: Low, Stop: High or Open
F/R	27	Forward/reverse control pin Forward: Low, Reverse: High or Open

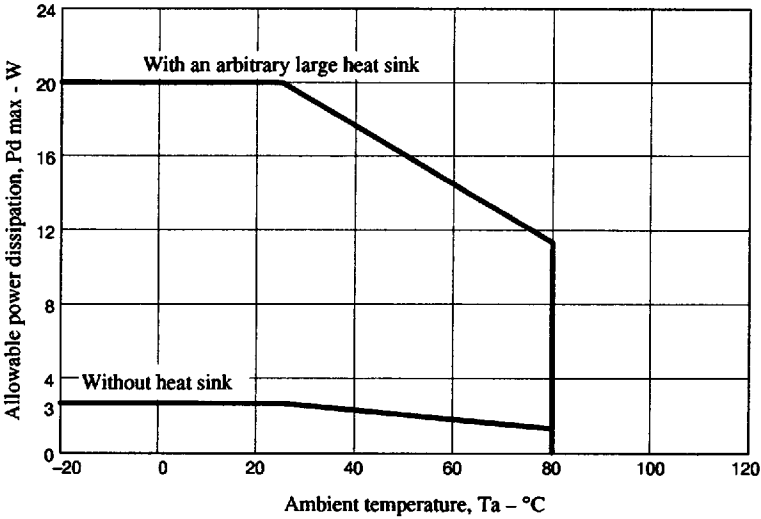
Truth Table

	Source Sink	F/R = "L"			F/R = "H"		
		IN1	IN2	IN3	IN1	IN2	IN3
1	OUT2 -> OUT1	H	L	H	L	H	L
2	OUT3 -> OUT1	H	L	L	L	H	H
3	OUT3 -> OUT2	H	H	L	L	L	H
4	OUT1 -> OUT2	L	H	L	H	L	H
5	OUT1 -> OUT3	L	H	H	H	L	L
6	OUT2 -> OUT3	L	L	H	H	H	L

Pin Assignment



Pd max – Ta



Relationship between crystal oscillator frequency fosc and FG frequency fFG is as follows.

$fFG \text{ (servo)} = fosc / (ECL \text{ divide-by-} 16 \times \text{count number})$

$= fosc / 8192$

**Description of the LB1927****1. Speed control circuit**

The IC performs speed control through combined use of a speed discrimination circuit and PLL circuit. The speed control circuit counts FG cycles and outputs a deviation signal every 2 FG cycles. The PLL circuit outputs a phase deviation signal every FG cycle.

The FG servo frequency is determined by the following equation. The motor rotation speed is set by the number of FG pulses and the crystal oscillator frequency.

$$f_{\text{FG (servo)}} = f_{\text{OSC}}/8192$$

$f_{\text{OSC}}$ : Crystal oscillator frequency

**2. Output drive circuit**

In order to reduce power loss at the output, the LB1927 uses the PWM drive technique. While ON, the output transistors are always saturated, and motor drive power is adjusted by varying the output ON duty ratio. Because output PWM switching is performed by the lower-side output transistor, a Schottky diode must be connected between OUT and VCC. (If the reverse recovery time of the diode is too long, a feedthrough current will flow at the instant when the lower-side transistor goes ON.) An internal diode is provided between OUT and GND. If large output current causes a problem (waveform distortion during lower-side kickback, etc.), an external rectifying diode or Schottky diode should be connected.

The output diode is integrated only on the lower side.

**3. Current limiting circuit**

The current limiting circuit limits the peak current to the value  $I = V_{\text{RF}}/R_f$  ( $V_{\text{RF}} = 0.5 \text{ V typ.}$ ,  $R_f$ : current detector resistance). Current limiting is achieved by reducing the ON duty ratio of the output, which reduces the current.

**4. Power save circuit**

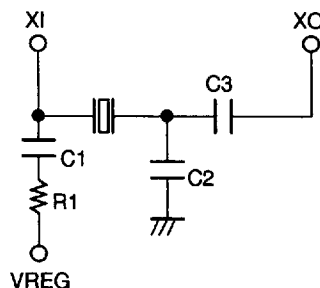
In order to reduce current drain in the STOP condition, the IC goes into power save mode. In this condition, bias current to most circuits is cut off, but the 5V regulator output remains active.

**5. Reference clock**

The reference clock for speed control can be input using one of the following two methods.

**[1] Using a crystal oscillator**

When a crystal is used for oscillation, connect the crystal, capacitors, and a resistor as shown in the figure below.



C1, R1: For stable oscillation

C3: For crystal coupling

C2: For overtone oscillation prevention

(Reference values)

Oscillator frequency (MHz)	C1 (μF)	C2 (pF)	C3 (pF)	R1 (Ω)
3 to 5	0.1	10	47	330k
5 to 8	0.1	None	47	330k
8 to 10	0.1	None	22	330k

The circuit configuration and values are for reference only. The crystal oscillator's characteristics as well as the possibility of floating capacitance and noise due to layout factors must be taken into consideration when designing an actual application.

[Precautions for wiring layout design]

Since the crystal oscillator circuit operates at high frequencies, it is susceptible to the influence of floating capacitance from the circuit board. Wiring should be kept as short as possible and traces should be kept narrow.

When designing the external circuitry, pay special attention to the wiring layout between the oscillator and C3 (C2), to minimize the influence of floating capacitance.

[2] External clock input (equivalent to crystal oscillator, several MHz)

When using an external signal source instead of a crystal oscillator, the clock signal should be input from the XO pin through a resistor of about 5.1 kΩ connected to the pin in series. The XO pin should be left open.

Signal input level

Low : 0 to 0.8V

High: 2.5 to 5.0V

6. Speed lock range

The speed clock range is  $\pm 6.25\%$  of the rated speed. When the motor rotation is within the lock range, the LD pin becomes Low (open collector output). When the motor rotation goes out of the lock range, the ON duty ratio of the motor drive output is varied according to the amount of deviation to bring the rotation back into the lock range.

7. PWM frequency

The PWM frequency is determined by the capacitance connected to the PWM pin.

$$f_{\text{PWM}} \approx 1/(14400 \times C)$$

The PWM frequency should be between 15 and 25 kHz.

8. Hall input signal

The Hall input requires a signal with an amplitude of at least the hysteresis width (42 mV max.). Taking possible noise influences into consideration, an amplitude of at least 100 mV is desirable.

9. Forward/reverse switching

Forward/reverse switching of motor rotation is carried out with the F/R pin. If this is performed while the motor is running, the following points must be observed:

- Feedthrough current during switching is handled by proper circuit design. However, the VCC voltage rise during switching (caused by momentary return of motor current to power supply) must not exceed the rated voltage (30V). If problems occur, the capacitance between VCC and GND must be increased.
- If the motor current after switching exceeds the current limiter value, the lower-side transistors go OFF but the upper-side transistors go into the short brake state, which causes a current flow. The magnitude of the current is determined by the motor counterelectromotive voltage and the coil resistance. This current may not exceed the rated current (2.5A). (Forward/reverse switching at high speed therefore is not safe.)



#### 10. Motor restraint protection circuit

To protect the IC and the motor itself when rotation is inhibited, a restraint protection circuit is provided. If the LD output is High (unlocked) for a certain interval in the start condition, the lower-side transistors are turned off. The length of the interval is determined by the capacitance at the CSD pin. A capacitance of 10  $\mu\text{F}$  results in a set interval of about 3.3 seconds. (Tolerance approx.  $\pm 30\%$ )

$$\text{Set interval (s)} \doteq 0.33 \times C (\mu\text{F})$$

If the capacitor arrangement is subject to leak current, possible adverse effects such as setting time tolerances must be taken into consideration.

When the restraint protection circuit has been activated, the condition can only be canceled by setting the system to the stop condition or by turning the power off and on again (in the stop condition). When wishing not to use the restraint protection circuit, connect the CSD pin to ground.

If the stop time when releasing the restraint protection is short, the capacitor charge will not be fully dissipated. This in turn will cause a shorter restraint protection activation time after the motor has been restarted. The stop time should therefore be designed to be sufficiently long, using the equation shown below (also when restarting in the motor start transient state).

$$\text{Stop time (ms)} \geq 15 \times C (\mu\text{F})$$

#### 11. Power supply regulation

Because this IC has a high output current, power supply line fluctuations can occur easily. Therefore a capacitor of sufficient capacitance must be connected between the VCC pin and ground to assure stable operation. If a diode is used in the power line for reverse-connection protection, the likelihood of power line fluctuations increases further, which will require more capacitance.

## Equivalent Circuit Block Diagram

