

LD3000 S Series

1650nm SENSOR LEDs

These edge light emitting diodes provide high output power at an unusually long wavelength. They are ideally suited for the detection of methane

Features

- Long wavelength coincides with methane absorption lines
- Compact
- Reliable
- Wide temperature range
- Choice of package styles



Specifications:

All data measured at 25°C

	Min	Typ	Max	Units
Peak operating wavelength	1620	1645	1670	nm
Spectral width		50	80	nm
Output power (into single mode fibre)	10	25		µW
Forward voltage		1.3	2	V

Applications

- Gas detection
- Spectroscopy
- Test and measurement

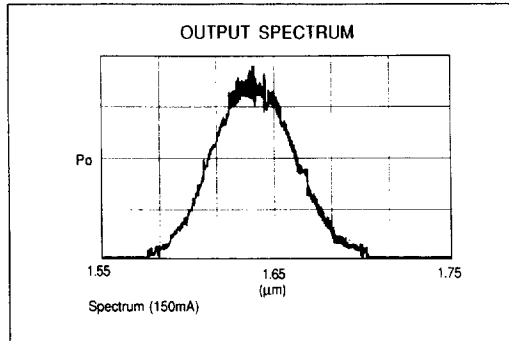
Safe, reliable sensing of dangerous gases in enclosed hazardous environments is essential for improving safety in mining and construction industries.

The 1650nm sensor LED offers a compact and reliable light source for use in a variety of existing and proposed systems for the detection of dangerous levels of methane by providing high spectral density illumination in the region of methane absorption lines.

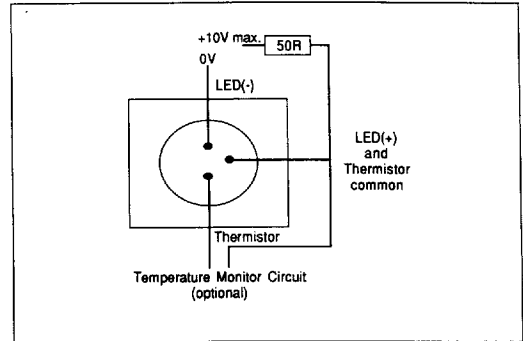
GEC-Marconi
Materials Technology

Measured Data:

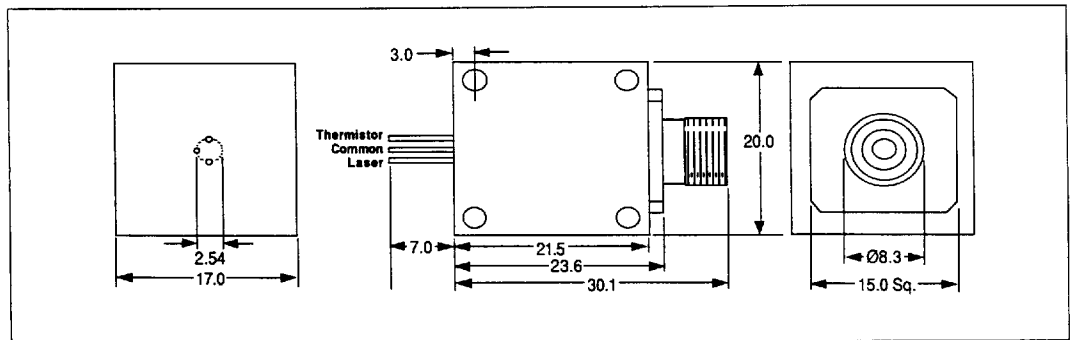
All data measured at 25°C



Drive Circuit:



Outline Drawings:



Absolute maximum ratings:

Forward current	200mA
Reverse voltage	0.5V
Storage temperature (°C)	-20 to +90
Operating temperature (°C)	-20 to +70

Ordering Information

Part No	Package	Fibre
LD 3207S	TO window	N/A
LD 3327S	FC/PC Connector housing	Optimised for 50/125 multimode
LD 3727S	FC/PC Connector housing	Optimised for 9/125 SMF

520/SM/02141/000 Issue 1

Caswell Towcester
Northamptonshire
NN12 8EQ
Telephone:
+ 44 (0) 1327 350581
Telex: 31572
Facsimile:
+ 44 (0) 1327 356775

North American Sales:
9630 Ridgehaven Court
San Diego CA 92123 USA
Telephone:
619 571 7715
Facsimile:
619 278 0905

GEC-Marconi
Materials Technology

A Division of GEC-Marconi Limited

This document gives only a general description of the product(s) and except where expressly provided otherwise shall form no part of any contract. From time to time changes may be made in the products or the condition of supply.

3768501 0000260 644

23