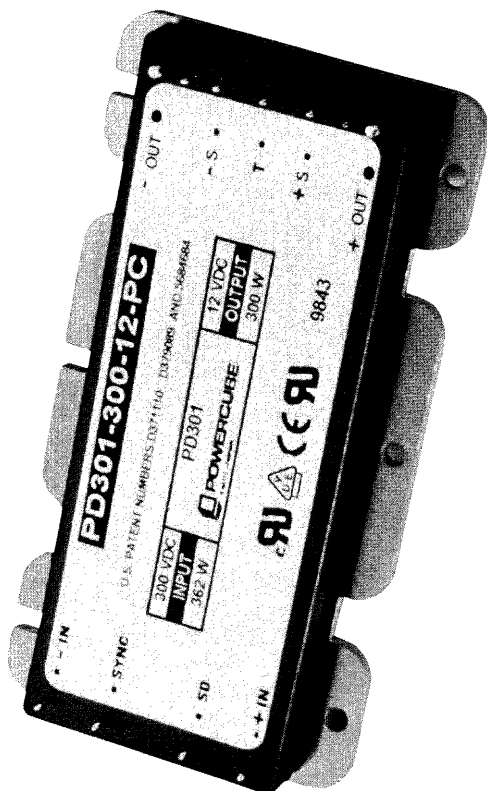


LPD301 SERIES

Key Features

- **Over-Temperature Protection**
(Thermal Shutdown)
- **Over-Voltage Protection**
- **Total Isolation**
(Input, Output & Base Plate)
- Up to **90% efficiency**
- 375 KHZ fixed frequency



“Full Brick” Size 50 to 200 Watts DC - to - DC Converters

Additional Features

- Pin, size and mounting compatible to VI-200 Series from Vicor
- Remote sense
- Parallelable - up to 20 units
(Without any External Components)
- Over-current protection
- Frequency Synchronization
- Low output ripple and noise
- 100°C Maximum Operating Temperature
- Excellent transient response
- MTBF > 1,000,000 hours (35°C, G_B)
- Trimmable output (+10%, -35%)
- UL (USA, Canada), VDE approved

Summary Typical Characteristics

Set Point Accuracy	0.5%
Load/Line Regulation	0.05%
Output Drift with Temperature	0.01%
Long Term Drift (per 1,000 hours)	0.2%
Switching Frequency	375 KHZ
Output Ripple - pp	1%
Output Voltage Trim Range	65 to 110%
Remote Sense Compensation	0.5V
Current Limit	130%
Short Circuit Current	145%
OVP Set Point	130%
Efficiency	80 to 90%
Input to Output Isolation	3,000 V _{RMS}
Input or Output to Baseplate	2,500 V _{RMS}
Weight	6.0 oz (170 gms)



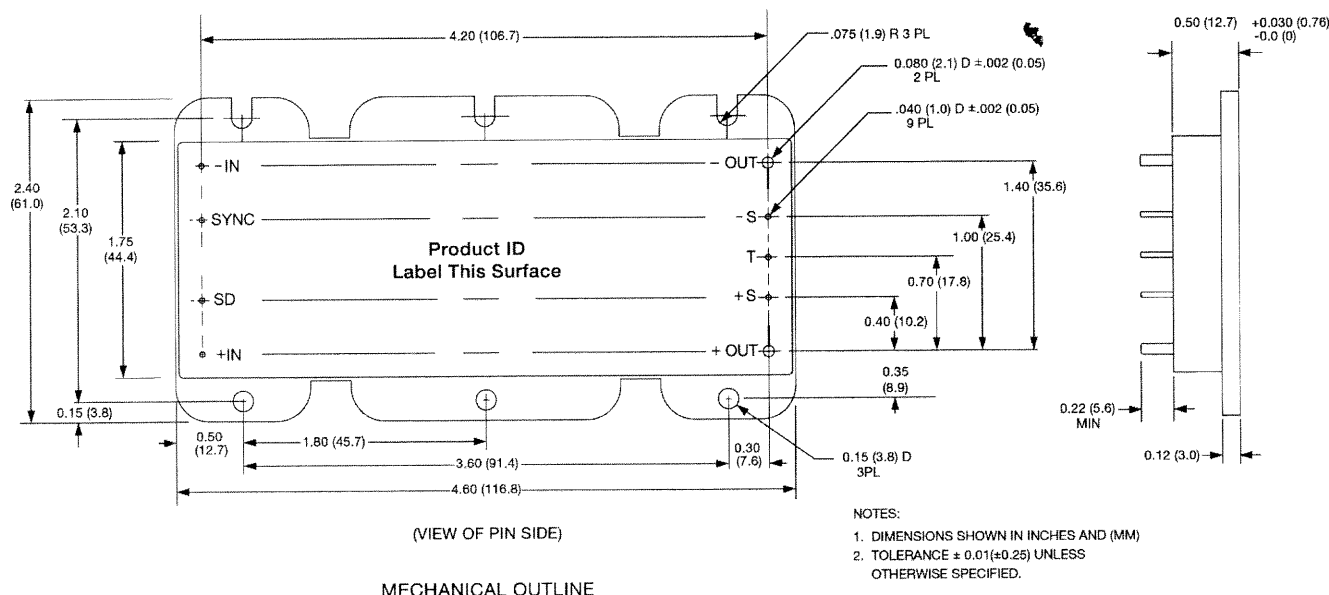
www.powercube.com

ISO 9001

TEL: 1-800-866-3590 • FAX: 1-800-866-3589

9340 OWENSMOUTH AVENUE • CHATSWORTH • CALIFORNIA 91311
From Outside the U.S.A. Tel: 818-734-6500 • Fax: 818-734-6540

LPD301 SERIES



Ordering Information

LPD301 — I — O — F — G — W				
Input Voltage	Output Voltage	Footprint / Pin Out	Performance Grade	Output Wattage
012 = 12 V	03 = 3.3 V	P = Superior performance	C = Commercial (-20°C to +100°C)	050 = 50 W
024 = 24 V	05 = 5.0 V	V = Industry standard	I = Industrial (-40°C to +100°C)	075 = 75 W
048 = 48 V	12 = 12 V		M = Military (-55°C to +100°C)	100 = 100 W
072 = 72 V	15 = 15 V			150 = 150 W
150 = 150 V	24 = 24 V			200 = 200 W
300 = 300 V	28 = 28 V			
	48 = 48 V			

Outputs less than 5V are limited to 40A for 200W; 30A for 150W; 20A for 100W; 15A for 75W, and; 10A for 50W output wattage models.

Other Products

DC-to-DC Converters available from Powercube

- "Half-brick" size (2.28"L X 2.4"W)
 - Low Profile (0.4" height), High Density 150 Watts output DC-to-DC Converters (PD150 Series).
 - 25, 50, 75 and 100 Watts DC-to-DC Converters as direct replacement for the industry's most popular devices (LPD150 Series).
 - 25, 50, 75, 100 and 150 Watts DC-to-DC Converters with four threaded holes for additional heatsink, as well as versatile mounting (TD Series).
- "Full-Brick" size (4.6"L X 2.4"W X 0.5"H)
 - 300 Watts output, High Density, DC-to-DC Converters (PD301 Series).

- 50 to 200 Watts, DC-to-DC Converters (MT Series), packaged in a metal housing with six threaded holes for additional heatsink as well as versatile mounting.

- 300 Watts, "full-brick" size, DC-to-DC Converters with four threaded holes for additional heatsink, as well as versatile mounting (TD300 Series).

Autorangeing Universal Front-end Module 500/750 Watts & 1000/1500 Watts AC-to-DC Converters in a very small size (1.45"x2.28"x0.5"), models UFM500/UFM1K.

Coming Soon

- High Power (600 Watts) Power Factor Corrected AC-to-DC Converter.



www.powercube.com

ISO 9001

TEL: 1-800-866-3590 • FAX: 1-800-866-3589

9340 OWENSMOUTH AVENUE • CHATSWORTH • CALIFORNIA 91311