

# MICRO

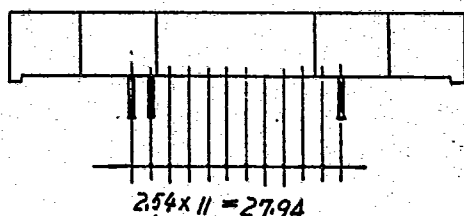
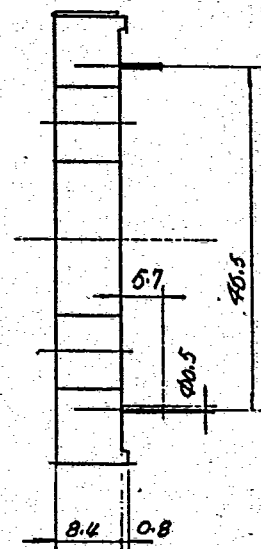
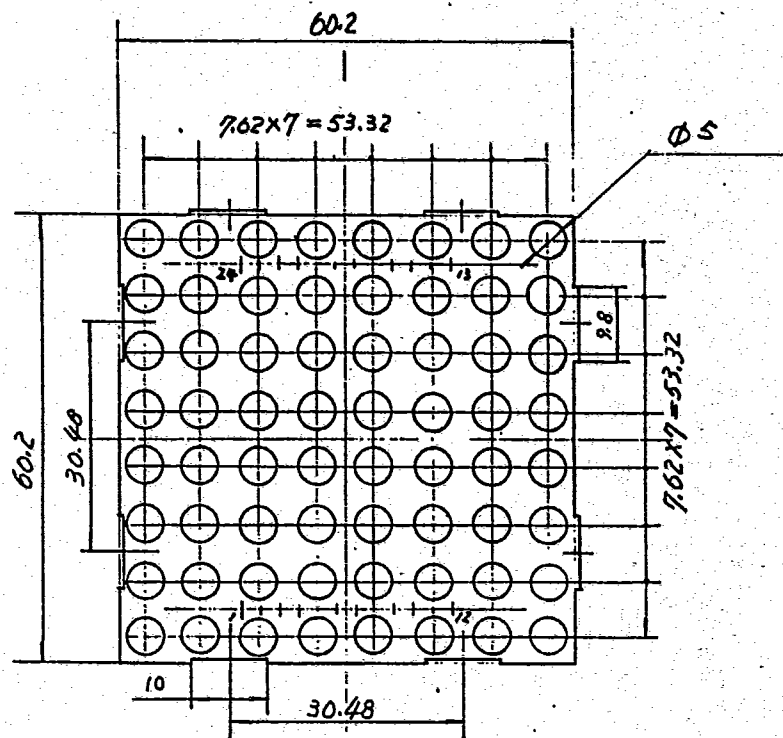
T-41-35

## MD2388

SERIES

### FEATURES

- High efficiency GaP/GaAsP
- High contrast
- Wide Viewing Angle
- 8X8 Matrix Array With Row-Column Select
- Rugged Encapsulation (Filled Reflector Construction)
- End & Side Stackable



### MAXIMUM RATINGS (Ta=25°C)

Reverse Voltage

VR

5V

Peak Forward Current / Segment

IF/Pulse\*

200mA

Continuous Forward Current / Segment

IF/DC

20mA

Storage Temperature Range

Tstg

-25 to +80°C

Operating Temperature Range

Topr

-20 to +75°C

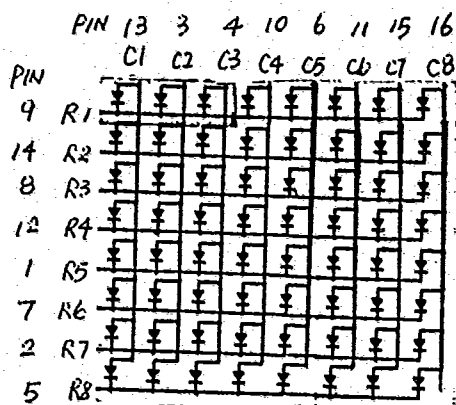
\* Note : Pulse Width = 1mS, Duty Ratio = 1/10.



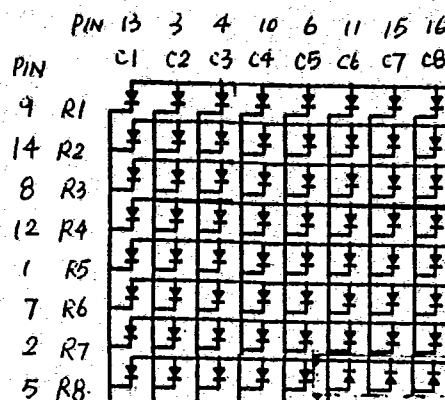
## MICRO ELECTRONICS LTD.

38, HUNG TO ROAD, KWUN TONG, HONG KONG. TELEX: 43510  
 KWUN TONG P. O. BOX 69477 CABLE ADDRESS "MICROTRON"  
 TEL. 3-430181-5 FAX. NO. 3-410321

## INTERNAL CONNECTIONS



2388C



2388A

ELECTRO-OPTICAL CHARACTERISTICS PER SEGMENT ( $T_a=25^\circ\text{C}$ )

PARAMETER	SYMBOL	MSD2388	MGD2388	MOD2388	MUD2388	UNIT	CONDITION
Forward Voltage (MAX)	VF	3.0	3.0	3.0	2.2	V	IF=20mA
Luminous Intensity (TYP)	Iv	600	800	2000	10000	$\mu\text{cd}$	IF=10mA
Segment to Segment Luminous Intensity Ratio		1.5:1	1.5:1	1.5:1	1.5:1		IF=10mA
Wave Length At Peak Emission	$\lambda_p$	700	565	635	660	nm	
Spectral Half Width	$\Delta\lambda$	30	30	30	30	nm	

\* MSD2388 - Red GaP

MGD2388 - Green GaP

MOD2388 - Orange GaAsP/GaP

MUD2388 - Ultra Red