



SAW Components

Data Sheet N 9260 M

Data Sheet

A large, stylized, 3D-rendered graphic of the EPCOS logo. The letters "EPCOS" are in a bold, sans-serif font, appearing to be part of a larger, curved structure that resembles a globe or a stylized wave. The graphic is rendered in shades of gray and white, giving it a metallic or high-tech appearance.



SAW Components

N 9260 M

IF Filter for Audio Applications

58,75 MHz

Data Sheet

Standard

Plastic package **SIP5K**

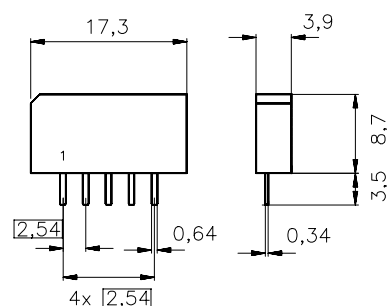
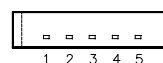
■ M

Features

- TV IF audio filter with pass bands for picture carrier and sound carrier at 54,25 MHz

Terminals

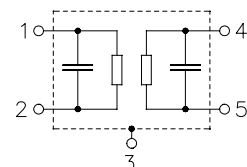
- Tinned CuFe alloy



Dimensions in mm, approx. weight 1,0 g

Pin configuration

- 1 Input
- 2 Input - ground
- 3 Chip carrier - ground
- 4 Output
- 5 Output



Type	Ordering code	Marking and package according to	Packing according to
N 9260 M	B39588-N9260-M100	C61157-A1-A15	F61074-V8067-Z000

Maximum ratings

Operable temperature range	T_A	-25/+65	°C	
Storage temperature range	T_{stg}	-40/+85	°C	
DC voltage	V_{DC}	12	V	between any terminals
AC voltage	V_{pp}	10	V	between any terminals



SAW Components

N 9260 M

IF Filter for Audio Applications

58,75 MHz

Data Sheet

Characteristics

Reference temperature: $T_A = 25 (45) ^\circ \text{C}$
 Terminating source impedance: $Z_S = 50 \Omega$
 Terminating load impedance: $Z_L = 2 \text{ k}\Omega \parallel 3 \text{ pF}$

		min.	typ.	max.	
Insertion attenuation	α				
Reference level for the following data	58,83 (58,75) MHz	18,6	20,1	21,6	dB
Relative attenuation	α_{rel}				
Sound carrier	54,33 (54,25) MHz	-1,5	-0,5	0,5	dB
Color carrier	55,25 (55,17) MHz	20,0	30,0	—	dB
Adjacent picture carrier	52,83 (52,75) MHz	40,0	50,0	—	dB
Adjacent sound carrier	60,33 (60,25) MHz	29,0	37,0	—	dB
Lower sidelobe					
45,08 ... 52,83 (45,00 ... 52,75) MHz		36,0	44,0	—	dB
Upper sidelobe					
60,33 ... 65,08 (60,25 ... 65,00) MHz		28,0	34,0	—	dB
Impedance at 58,83 MHz					
Input: $Z_{\text{IN}} = R_{\text{IN}} \parallel C_{\text{IN}}$		—	1,3 \parallel 10,2	—	k Ω \parallel pF
Output: $Z_{\text{OUT}} = R_{\text{OUT}} \parallel C_{\text{OUT}}$		—	3,3 \parallel 1,5	—	k Ω \parallel pF
Temperature coefficient of frequency	TC_f	—	-72	—	ppm/K



SAW Components

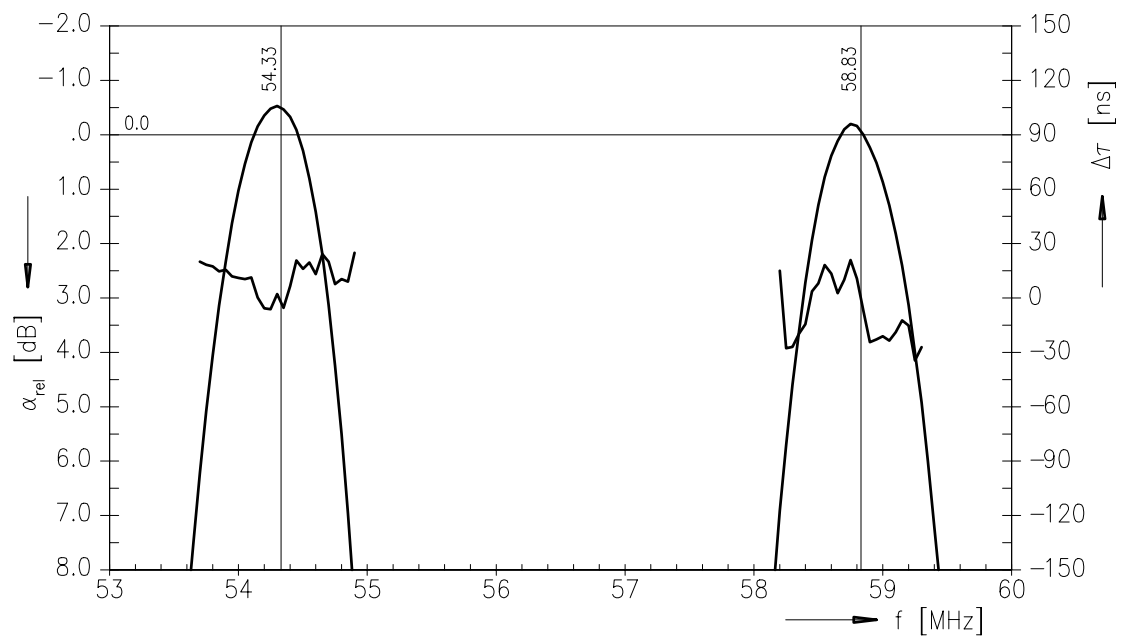
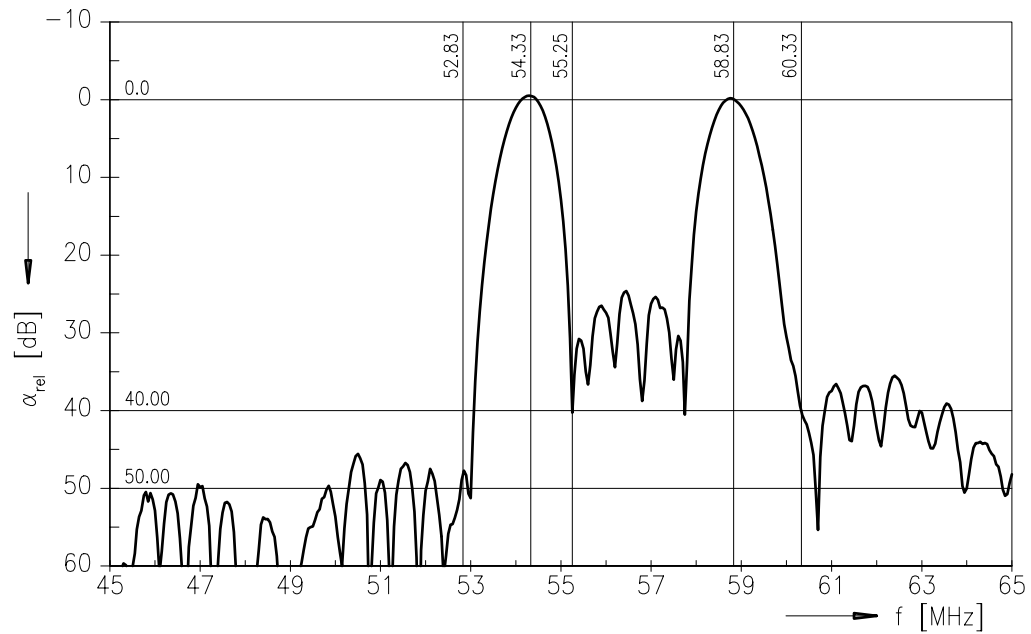
N 9260 M

IF Filter for Audio Applications

58,75 MHz

Data Sheet

Frequency response





SAW Components	N 9260 M
IF Filter for Audio Applications	58,75 MHz

Data Sheet

Published by EPCOS AG
Surface Acoustic Wave Components Division, OFW E UE
P.O. Box 80 17 09, D-81617 München

© EPCOS AG 1999. All Rights Reserved.

As far as patents or other rights of third parties are concerned, liability is only assumed for components per se, not for applications, processes and circuits implemented within components or assemblies.

The information describes the type of component and shall not be considered as assured characteristics.

Terms of delivery and rights to change design reserved.

For questions on technology, prices and delivery please contact the sales offices of EPCOS AG or the international representatives.

Due to technical requirements components may contain dangerous substances. For information on the type in question please also contact one of our sales offices.