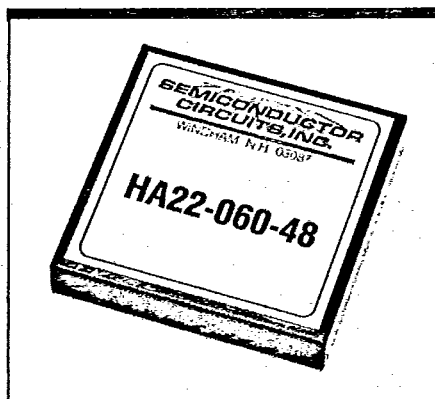


T-57-11



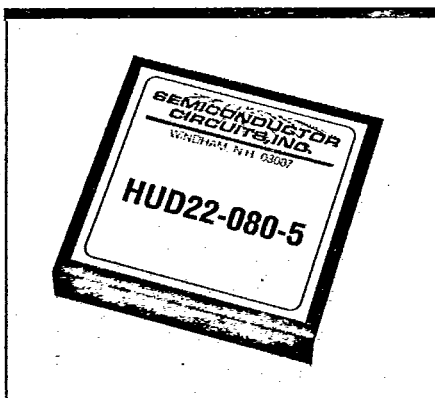
Size: 2.0 x 2.0 x 0.375 inches

5 to 7.5 Watt Single and Dual Output

H Series

- Regulated outputs
- Pi input filter
- Continuous short circuit protection
- MOSFET Design
- 500 VDC I/O isolation
- SMT - surface mount technology

| Input Voltage Range VDC | Output Voltage | Output Current | Regulation % Line \pm Load \pm | | Case | Model Number | Case | Model Number |
|-------------------------|----------------|----------------|---------------------------------------|-----|------|--------------|------|--------------|
| 4.5 - 5.5 | 5 VDC | 1000 mA | 0.01 | 0.1 | 6 | HA11-100-5 | 5B | HP11-100-5 |
| 9 - 36 | 5 VDC | 1000 mA | 0.25 | 1.0 | | HA11-100-18 | | HP11-100-18 |
| 20 - 72 | 5 VDC | 1000 mA | 0.25 | 1.0 | | HA11-100-48 | | HP11-100-48 |
| 4.5 - 5.5 | 9 VDC | 660 mA | 0.01 | 0.1 | | HA19-066-5 | | HP19-066-5 |
| 9 - 36 | 9 VDC | 660 mA | 0.25 | 1.0 | | HA19-066-18 | | HP19-066-18 |
| 20 - 72 | 9 VDC | 660 mA | 0.25 | 1.0 | | HA19-066-48 | | HP19-066-48 |
| 4.5 - 5.5 | 12 VDC | 600 mA | 0.01 | 0.1 | | HA12-060-5 | | HP12-060-5 |
| 9 - 36 | 12 VDC | 600 mA | 0.25 | 1.0 | | HA12-060-18 | | HP12-060-18 |
| 20 - 72 | 12 VDC | 600 mA | 0.25 | 1.0 | | HA12-060-48 | | HP12-060-48 |
| 4.5 - 5.5 | 15 VDC | 500 mA | 0.01 | 0.1 | | HA13-050-5 | | HP13-050-5 |
| 9 - 36 | 15 VDC | 500 mA | 0.25 | 1.0 | | HA13-050-18 | | HP13-050-18 |
| 20 - 72 | 15 VDC | 500 mA | 0.25 | 1.0 | | HA13-050-48 | | HP13-050-48 |
| 4.5 - 5.5 | ± 12 VDC | ± 300 mA | 0.01 | 0.1 | 6 | HA22-060-5 | 5B | HP22-060-5 |
| 9 - 36 | ± 12 VDC | ± 300 mA | 0.25 | 1.0 | | HA22-060-18 | | HP22-060-18 |
| 20 - 72 | ± 12 VDC | ± 300 mA | 0.25 | 1.0 | | HA22-060-48 | | HP22-060-48 |
| 4.5 - 5.5 | ± 15 VDC | ± 250 mA | 0.01 | 0.1 | | HA23-050-5 | | HP23-050-5 |
| 9 - 36 | ± 15 VDC | ± 250 mA | 0.25 | 0.1 | | HA23-050-18 | | HP23-050-18 |
| 20 - 72 | ± 15 VDC | ± 250 mA | 0.25 | 0.1 | | HA23-050-48 | | HP23-050-48 |

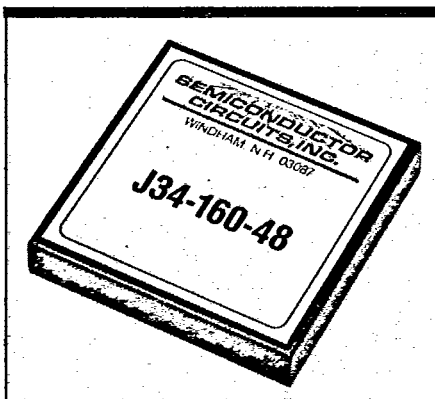


Size: 2.0 x 2.0 x 0.375 inches

3.5 to 9.6 Watt Single and Dual Output HUD/HUA Series

- Unregulated outputs
- Pi input filter
- Efficiency to 80%
- Continuous short circuit protection
- MOSFET design
- 500 VDC I/O isolation
- MTBF 1,000,000 hours

| Input Voltage Range VDC | Output Voltage | Output Current | Regulation % Line \pm Load \pm | | Case | Model Number | Case | Model Number |
|-------------------------|----------------|----------------|---------------------------------------|----------------------|------|--------------|------|--------------|
| 4.0 - 6.0 | 5 VDC | 750 mA | 1%/1% Vin | SEE LOAD CURVE | 5B | HUD11-075-5 | 6 | HUA11-075-5 |
| 4.0 - 6.0 | 12 VDC | 600 mA | | | | HUD12-060-5 | | HUA12-060-5 |
| 4.0 - 6.0 | 12 VDC | 800 mA | | | | HUD12-080-5 | | HUA12-080-5 |
| 4.0 - 6.0 | ± 12 VDC | ± 300 mA | | | | HUD22-060-5 | | HUA22-060-5 |
| 4.0 - 6.0 | ± 12 VDC | ± 400 mA | | | | HUD22-080-5 | | HUA22-080-5 |
| 4.0 - 6.0 | ± 15 VDC | ± 300 mA | | | | HUD23-060-5 | | HUA23-060-5 |
| 4.0 - 6.0 | ± 15 VDC | ± 400 mA | | | | HUD23-080-5 | | HUA23-080-5 |



12 Watt Single, Dual and Triple Output

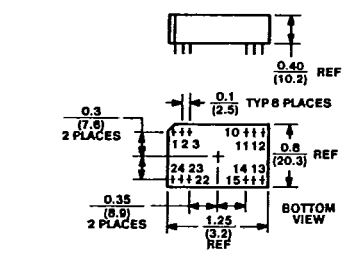
J Series

- Regulated outputs
- Continuous short circuit protection
- MOSFET design
- 500 VDC I/O isolation

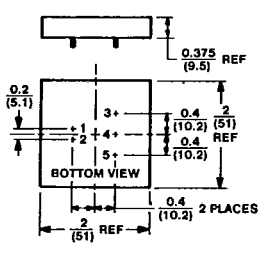
| Input Voltage Range VDC | Output Voltage | Output Current | Regulation % Line \pm Load \pm | | Case | Model Number |
|-------------------------|----------------|--------------------|---------------------------------------|-----|------|--------------|
| 9 - 36 | 5 VDC | 2.4 A | 0.5 | 1.0 | 14 | J11-240-18 |
| 20 - 72 | 5 VDC | 2.4 A | | | | J11-240-48 |
| 9 - 36 | 12 VDC | 1.0 A | | | | J12-100-18 |
| 20 - 72 | 12 VDC | 1.0 A | | | | J12-100-48 |
| 9 - 36 | 15 VDC | 800 mA | 0.5 | 1.0 | 14 | J15-080-18 |
| 20 - 72 | 15 VDC | 800 mA | | | | J15-080-48 |
| 9 - 36 | ± 12 VDC | ± 500 mA | | | | J22-100-18 |
| 20 - 72 | ± 12 VDC | ± 500 mA | | | | J22-100-48 |
| 9 - 36 | ± 15 VDC | ± 400 mA | 0.25 | 3.0 | 14 | J23-080-18 |
| 20 - 72 | ± 15 VDC | ± 400 mA | | | | J23-080-48 |
| 9 - 36 | 5 \pm 12 VDC | 1.0 A \pm 300 mA | | | | J34-160-18 |
| 20 - 72 | 5 \pm 12 VDC | 1.0 A \pm 300 mA | | | | J34-160-48 |
| 9 - 36 | 5 \pm 15 VDC | 1.0 A \pm 230 mA | 0.25 | 3.0 | 14 | J35-146-18 |
| 20 - 72 | 5 \pm 15 VDC | 1.0 A \pm 230 mA | | | | J35-146-48 |

Case Dimensions

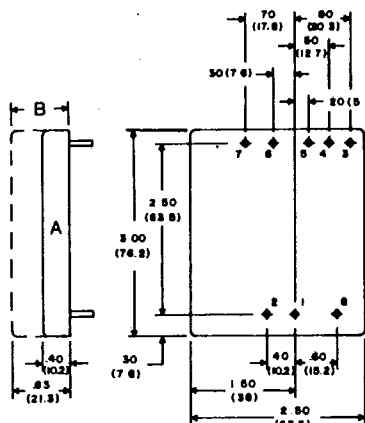
T-90-20



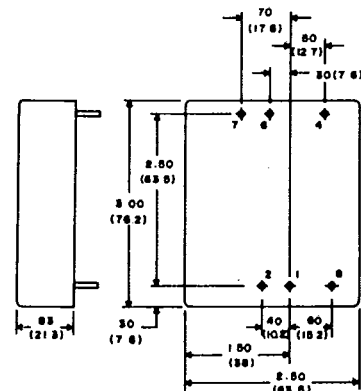
Case 1



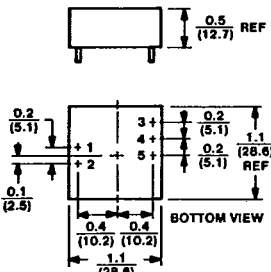
Case 6



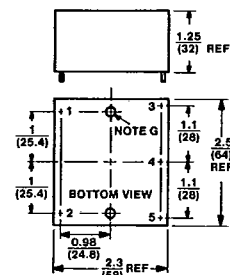
Case 10



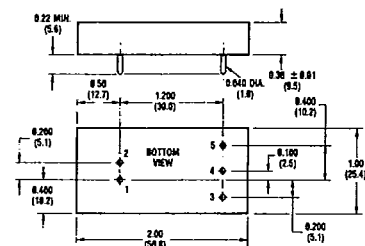
Case 13



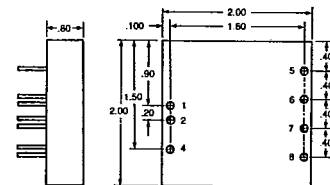
Case 2



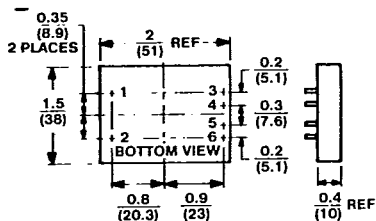
Case 7



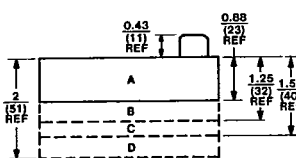
Case 11-1



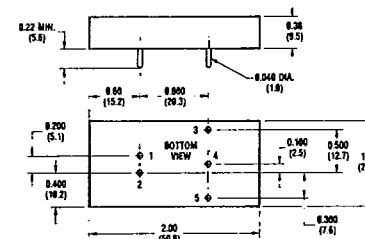
Case 14



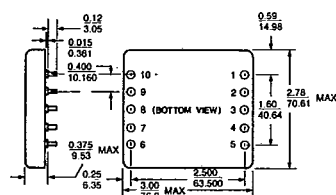
Case 3



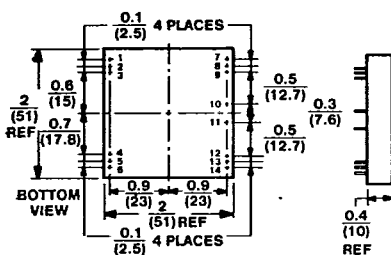
Case 8



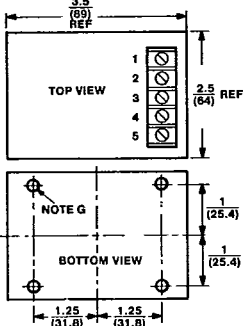
Case 11-2



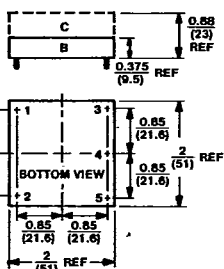
Case 15



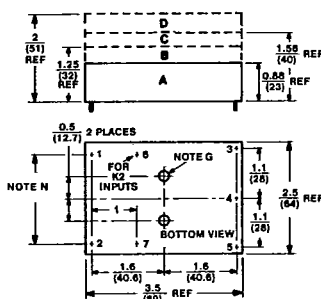
Case 4



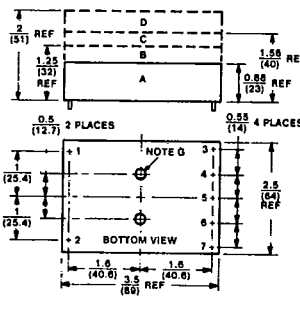
Case 8



Case 5



Case 9



Case 12

