


MODEL
ILM16040
SMALLEST HIGH PERFORMANCE
LOG AMPLIFIER 160 MHz

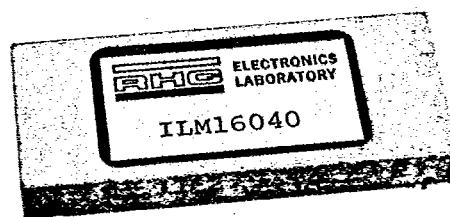
Less than 0.5 cubic inches

Weight < 1.0 oz.

Hermetically Sealed

P.C. Mount

T-74-11-01

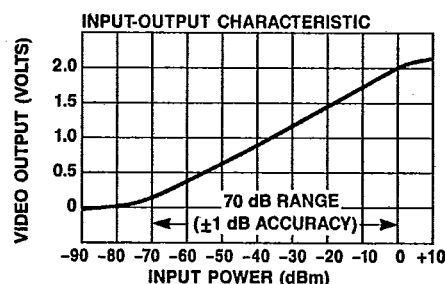


Guaranteed Specifications*

(From -55°C to +85°C Case Temp)

| | |
|---------------------------------|----------------------|
| Frequency | 160 MHz |
| Bandwidth | 40 MHz Min |
| Input Dynamic Range | -70 dBm to 0 dBm |
| Log Output | |
| Linearity | |
| (@ room temp) | ±1 dB Max |
| (-30°C to +71°C) | ±2 dB Max |
| Slope (@ room temp) | 25 mV/dB Nom |
| Slope Variation vs. Temperature | |
| (-30°C to +71°C) | 5% Max |
| Voltage Range (Direct Coupled) | 0 to 2V Nom |
| Rise Time (10-90%) | 30 nsec Max |
| Limited IF Output | 0 dBm Nom |
| Bias Power** | +12 VDC @ 60 mA Typ |
| | -12 VDC @ 100 mA Typ |

Typical Performance



Operating Characteristics

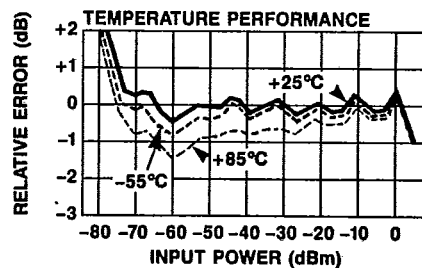
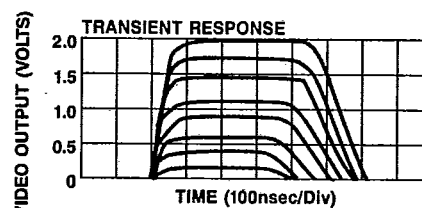
| | |
|----------------------|---|
| IF Impedance | 50 Ohms Nominal |
| Video Load Impedance | 93 Ohms Nominal |
| Package Type | P.C. Mount (FP-23) |
| | (See page 477 for physical dimensions.) |

Environmental

These units are designed to meet the environmental and screening requirements of Table 1C, page 498 of the Adams-Russell catalog.

*All specifications apply when operated at ±12 VDC and with a 50 ohm IF source and load impedance and 93 ohm video load impedance.

**±15 VDC option available. Consult factory.



Ordering Information

| Model No. | Connector | Unit Price (1-9 Units) |
|-----------|------------|---------------------------|
| ILM16040 | P.C. Mount | \$1950 |


Make the Connection...

161 E. Industry Court Deer Park, NY 11729 Fax (516) 242-1222

Adams Russell
 COMPONENTS GROUP

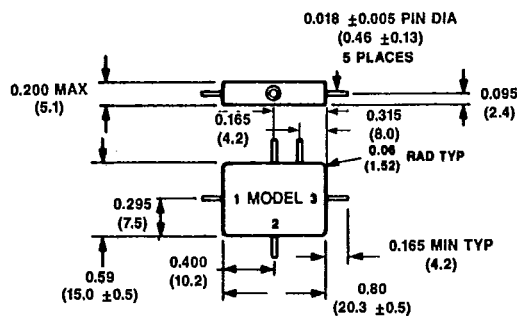
For Technical Information, Call (516) 242-1100

For Ordering Information, Call (617) 273-3333

MECHANICAL DATA

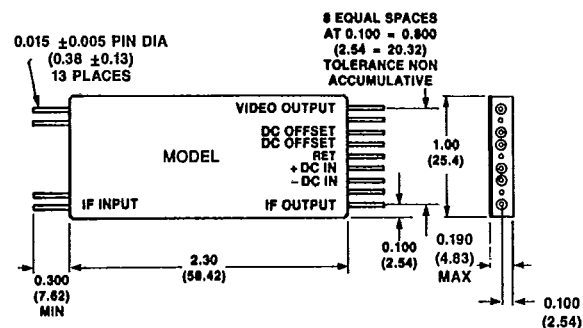
UNLESS OTHERWISE NOTED:
 .XXX = ± 0.010 , .XX = ± 0.020
 (X = ± 0.3), (.XX = ± 0.5)
 DIMENSIONS IN () ARE IN MM.

FP-11



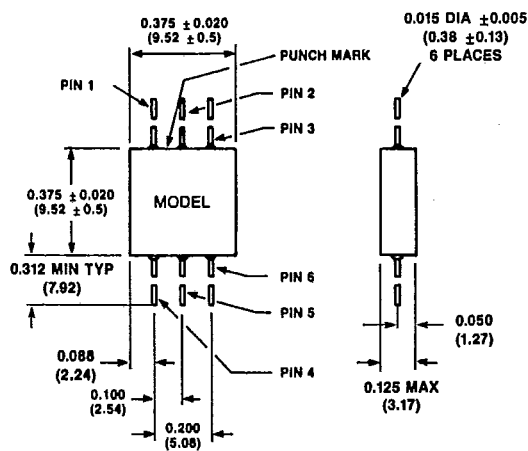
WEIGHT (APPROX.): 0.35 OUNCES 10 GRAMS

FP-12



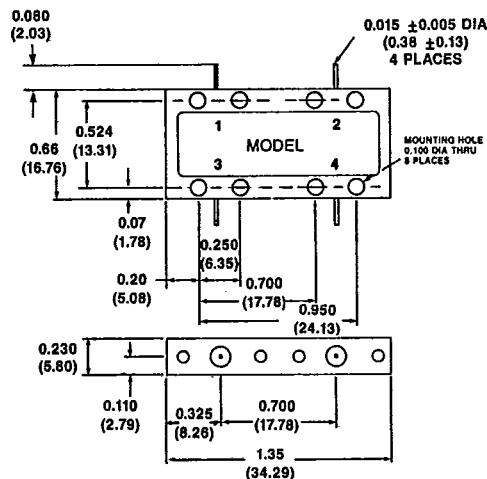
WEIGHT (APPROX.): 0.81 OUNCES 23 GRAMS

FP-13



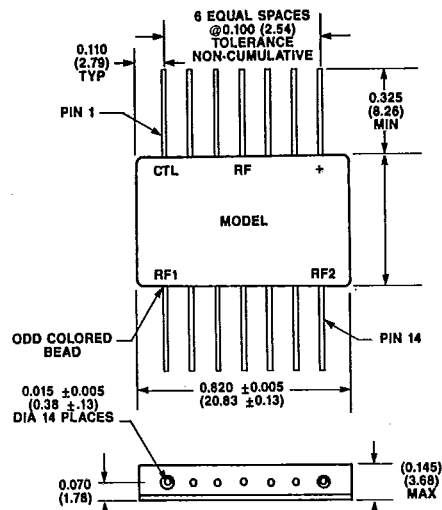
WEIGHT (APPROX.): 0.03 OUNCES 0.8 GRAMS

FP-14



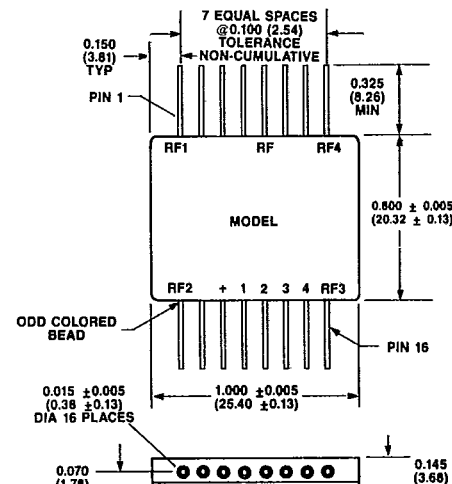
WEIGHT (APPROX.): 0.63 OUNCES 18 GRAMS

FP-16



WEIGHT (APPROX.): 0.14 OUNCES 4 GRAMS

FP-17

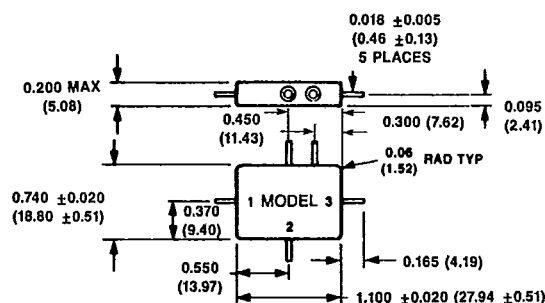


WEIGHT (APPROX.): 0.21 OUNCES 6 GRAMS

DIMENSIONS IN () ARE IN MM.

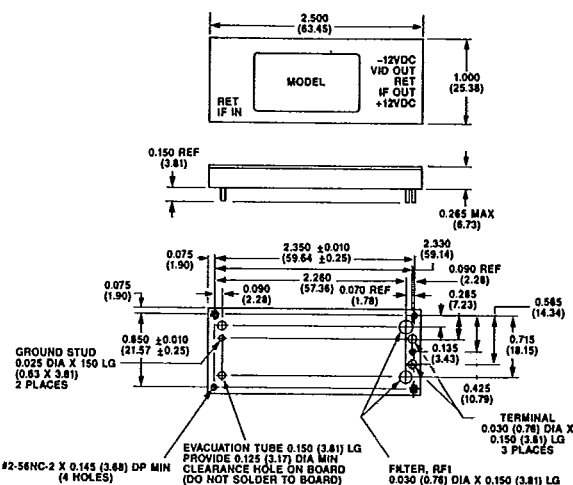
T-90-20

FP-19

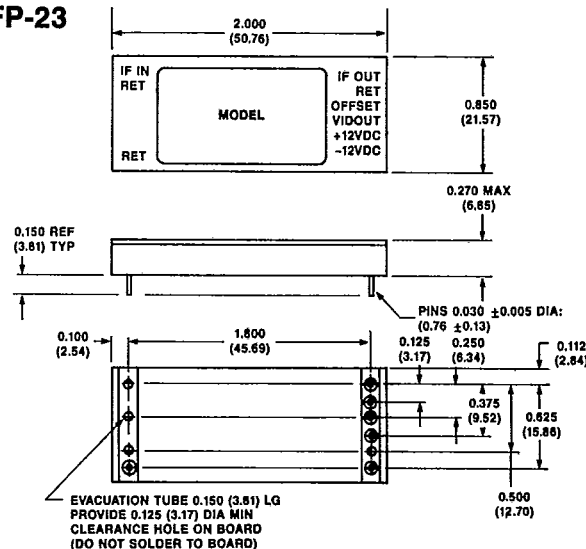


WEIGHT (APPROX): 0.35 OUNCES 10 GRAMS

FP-21



WEIGHT (APPROX.): 2.1 OUNCES 60 GRAMS

FP-23

WEIGHT (APPROX.): 1.0 OUNCES 28 GRAMS