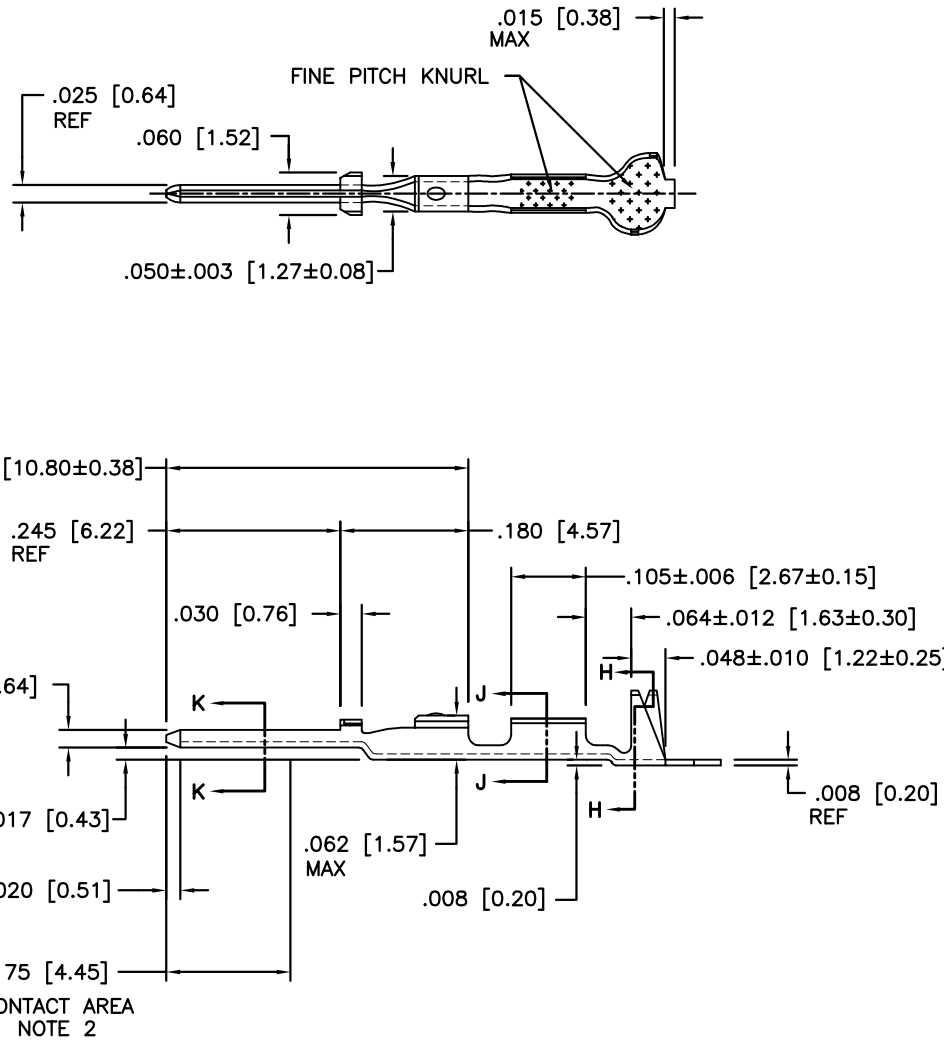



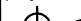
Tous droits strictement reserves. Reproduction ou communication a des tiers
Interdite sous quelque forme que ce soit sans autorisation ecrite du proprietaire.
Propriete de c FCI. Droits de reproduction FCI.

FCI

All rights strictly reserved. Reproduction or issue to third parties in any
form whatever is not permitted without written authority from the proprietor.
Property of FCI. Copyright FCI.

PRODUCT NUMBER
SEE SHEET 2



mat'l. code				tolerances unless otherwise specified				CUSTOMER COPY		<div><div>A</div><div>FCI</div><div>www.fciconnect.com</div></div>	
NOTE 1										title	
ltr	ecn no	dr	date	linear	.XX ±.01/.X±.3			projection 	C.T.W. MALE PIN LOOSE PIECE		
F	V41701	LSS	11/22/94		.XXX ±.005/.XX±.13						
G	V05-0254	HTB	3/18/05		.XXXX ±.0020/.XXX±.051						
				angles	0° ±2°				product family PV TERMINALS		
				dr	L. SANDERS	11/28/94					
				enrg	T. HANNA	11/28/94					
				chr	T. BREWBAKER	11/28/94	scale	A		code	
				appd	T. HANNA	11/28/94					
sheet index	revision sheet	G	G				4:1	size dwg no		213	
		1	2					48115		sheet 1 of 2	

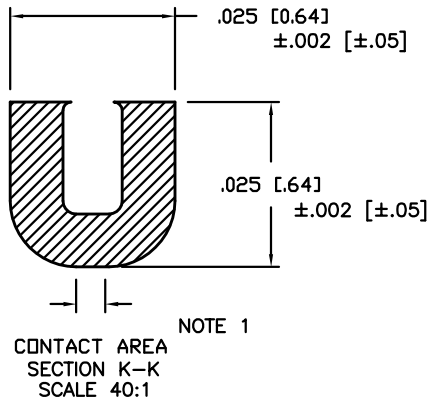
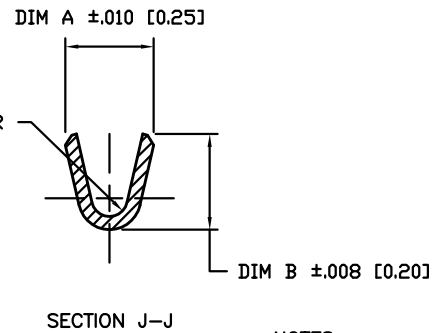
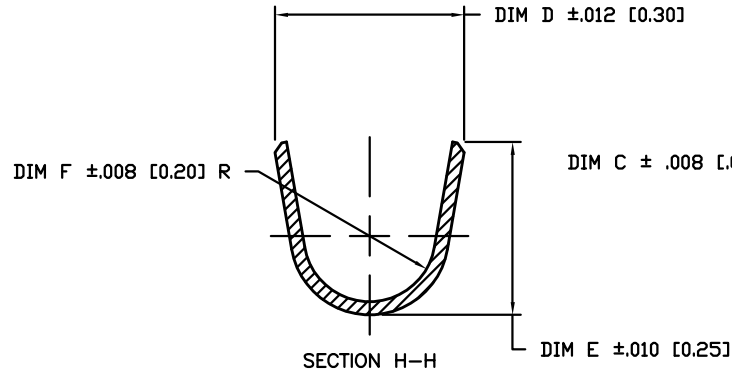
ACAD

PDM: Rev:G

STATUS:Released

Printed: Mar 23, 2005

PRODUCT NUMBER NOTE 5	AWG	DIM A	DIM B	DIM C	DIM D	DIM E	DIM F
48115-000	28-32	.054 [1.37]	.058 [1.47]	.011 [0.28]	.115 [2.92]	.105 [2.67]	.040 [1.02]
48115-000LF	28-32	.054 [1.37]	.058 [1.47]	.011 [0.28]	.115 [2.92]	.105 [2.67]	.040 [1.02]
48116-000	22-26	.070 [1.78]	.065 [1.65]	.017 [0.43]	.139 [3.53]	.120 [3.05]	.050 [1.27]
48116-000LF	22-26	.070 [1.78]	.065 [1.65]	.017 [0.43]	.139 [3.53]	.120 [3.05]	.050 [1.27]
48117-000	18-20	.104 [2.64]	.104 [2.64]	.021 [0.53]	.139 [3.53]	.120 [3.05]	.050 [1.27]
48117-000LF	18-20	.104 [2.64]	.104 [2.64]	.021 [0.53]	.139 [3.53]	.120 [3.05]	.050 [1.27]



NOTES:

- ① MATERIAL: 3/4 HD. BRASS ALLOY 260.
- ② PLATING: ELECTRODEPOSITED GOLD 50u"/1.27u IN CONTACT AREA, REMAINDER GOLD FLASH. UNDERPLATE 50u"/1.27u NICKEL.
3. TERMINAL MAY BE USED WITH MINI LATCH HOUSING.
4. APPLICABLE SPECIFICATION:
A. BUS-12-098 PRODUCT SPECIFICATION.
B. TA-211 CRIMP SPECIFICATION.
- ⑤ PART NUMBERS WITH AN LF SUFFIX MEET EUROPEAN UNION DIRECTIVES AND OTHER COUNTRY REGULATIONS AS DESCRIBED IN GS-22-008.
6. THIS PRODUCT IS NOT INTENDED TO BE EXPOSED TO MANUFACTURING SOLDER PROCESSES.

mat'l. code NOTE 1				tolerances unless otherwise specified		CUSTOMER COPY		A FCI www.fciconnect.com	
litr	ecr no	dr	date	linear	.XX ±.01/.X±.3	projection INCH/MM	title C.T.W. MALE PIN LOOSE PIECE	product family PV TERMINALS	code 213
G					.XXX ±.005/.XX±.13				
					.XXX ±.0020/.XXX±.051				
				angles	0° ±2°	scale 10:1	A	48115	sheet 2 of 2
				dr	L. SANDERS 11/28/94				
				enr	T. HANNA 11/28/94				
				chr	T. BREWBAKER 11/28/94				
				appd	T. HANNA 11/28/94	cage code 22526	4		
sheet index	revision sheet								