



SAW Components

Data Sheet B4154

Data Sheet





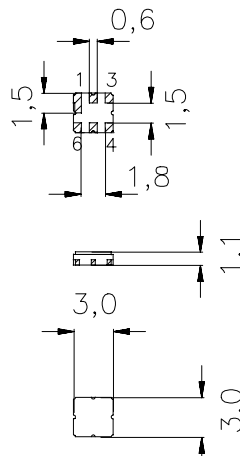
Ceramic package **DCC6D**

Features

- Low-loss RF filter for mobile telephone PCS systems, receive path
- Low amplitude ripple
- Usable passband 60 MHz
- Unbalanced to balanced operation
- Package for **S**urface **M**ounted **T**echnology (**SMT**)
- Ceramic SMD package

Terminals

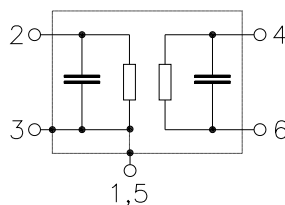
- Gold-plated Ni



Dimensions in mm, approx. weight 0,037 g

Pin configuration

- | | |
|---------|------------------------|
| 2 | Input, unbalanced |
| 4, 6 | Output, balanced |
| 1, 3, 5 | Ground, to be grounded |



Type	Ordering code	Marking and Package according to	Packing according to
B4154	B39202-B4154-U510	C61157-A7-A68	F61074-V8089-Z000

Electrostatic Sensitive Device (ESD)

Maximum ratings

Operating temperature range	T	- 30 / + 85	°C	source and load impedance 50 Ω peak power of TDMA signal, duty cycle 1 : 3
Storage temperature range	T_{stg}	- 40 / + 85	°C	
DC voltage	V_{DC}	5	V	
Input power max.	P_{IN}	0	dBm	



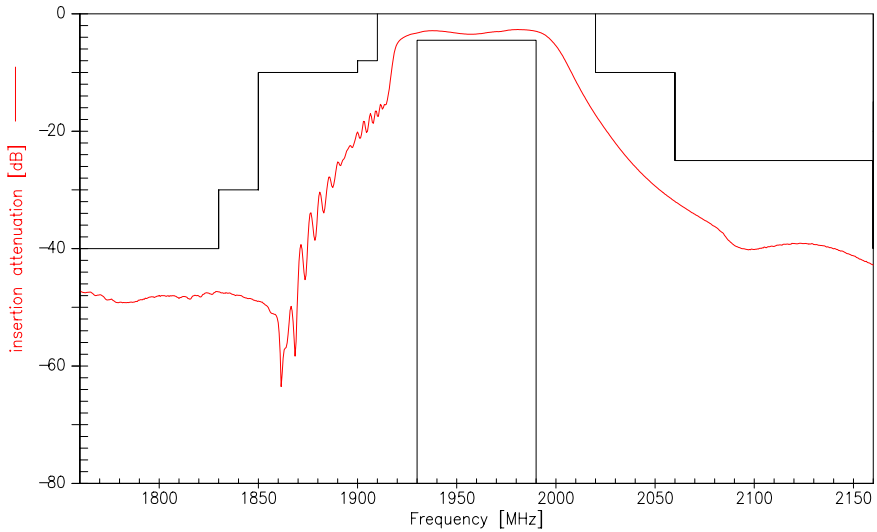
Characteristics

Operating Temperature Range:	$T = -30 \text{ to } +85^{\circ}\text{C}$
Terminating source impedance:	$Z_S = 50 \Omega$ (unbalanced)
Terminating load impedance:	$Z_L = 50 \Omega$ (balanced)

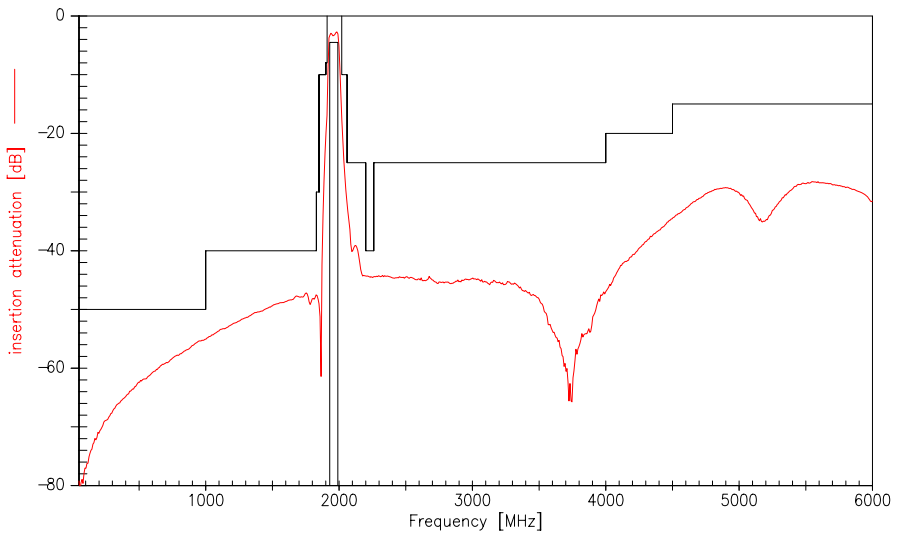
			min.	typ.	max.	
Center frequency	f_C		—	1960,0	—	MHz
Maximum insertion attenuation	α_{\max}					
	1930,0 ... 1990,0 MHz		—	3,6	4,5	dB
Amplitude ripple (p-p)	$\Delta\alpha$					
	1930,0 ... 1990,0 MHz		—	0,9	1,8	dB
Attenuation	α					
	0,0 ... 1000,0 MHz		50	56	—	dB
	1000,0 ... 1830,0 MHz		40	50	—	dB
	1830,0 ... 1850,0 MHz		30	50	—	dB
	1850,0 ... 1900,0 MHz		10	19	—	dB
	1900,0 ... 1910,0 MHz		8	16	—	dB
	2020,0 ... 2060,0 MHz		10	17	—	dB
	2060,0 ... 2200,0 MHz		25	32	—	dB
	2200,0 ... 2260,0 MHz		40	47	—	dB
	2260,0 ... 4000,0 MHz		25	42	—	dB
	4000,0 ... 4500,0 MHz		20	33	—	dB
	4500,0 ... 6000,0 MHz		15	30	—	dB



Transfer function (three port measurement)



Transfer function (wideband)





Published by EPCOS AG

Surface Acoustic Wave Components Division, OFW E MF

P.O. Box 80 17 09, D-81617 München

© EPCOS AG 1999. All Rights Reserved.

As far as patents or other rights of third parties are concerned, liability is only assumed for components per se, not for applications, processes and circuits implemented within components or assemblies.

The information describes the type of component and shall not be considered as assured characteristics.

Terms of delivery and rights to change design reserved.

For questions on technology, prices and delivery please contact the sales offices of EPCOS AG or the international representatives.

Due to technical requirements components may contain dangerous substances. For information on the type in question please also contact one of our sales offices.