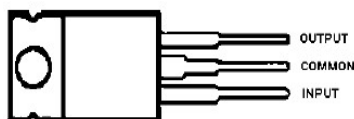


Description

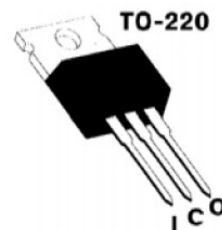
This series of fixed-voltage monolithic integrated-circuit voltage regulators is designed for a wide range of applications. These applications include on-card regulation for elimination of noise and distribution associated with single-point regulation. In addition, they can be used with power-pass elements to make high-current voltage regulators. Each The internal of these regulators can deliver up to 1.5 A of output current.

Features

- Output Current in Excess of 1.5A (PD¹15W)
- No External Components Required
- Internal Short Circuit Current Limiting
- Internal Thermal Overload Protection
- Output Transistor Safe-Area Compensation
- Output Voltage Offered in 4% Tolerance

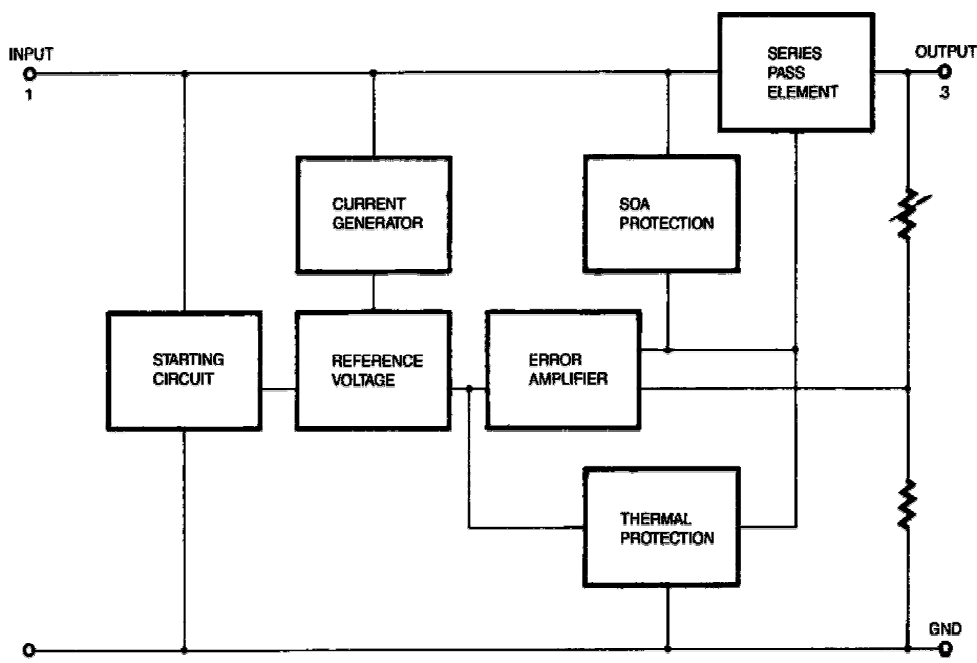


Package TO-220
(top view)



Package

Internal Block Diagram



Absolute Maximum Ratings

Maximum Input Voltage: 36V

Operation Junction Temperature Range: -40 °C to 125 °

Electrical Characteristics

($V_{in}=10V$, $I_o=0.5A$, $T_j=25^{\circ}$, unless otherwise noted.)

Characteristic	Symbol	Min	Max	Unit
Output Voltage	V_o	-4.8	-5.2	Vdc
Line Regulation	Reg_{line}	-	50	mV
-7.0 Vdc $\leq V_i \leq$ -25 Vdc $I_o=0.1A$		-	100	
-7.0 Vdc $\leq V_i \leq$ -25 Vdc $I_o=0.5A$			25	
-8.0 Vdc $\leq V_i \leq$ -12 Vdc $I_o=0.1A$			50	
-8.0 Vdc $\leq V_i \leq$ -12 Vdc $I_o=0.5A$				
Load Regulation	Reg_{load}	-	100	mV
5.0 mA $\leq I_o \leq$ 1.5 A		-	50	
250 mA $\leq I_o \leq$ 750 mA				
Quiescent Current	I_B	-	8.0	mA
Quiescent Current Change	ΔI_B	-	1.3	mA
-7.0 Vdc $\leq V_i \leq$ -25 Vdc		-	0.5	
5.0 mA $\leq I_o \leq$ 1.0A				

Typical Applications Circuit

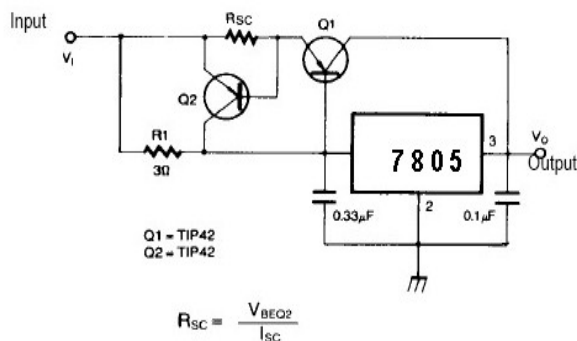


Figure 1. High Output Current with Short Circuit Protection

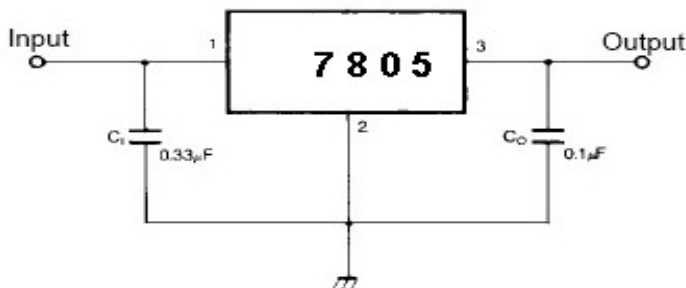
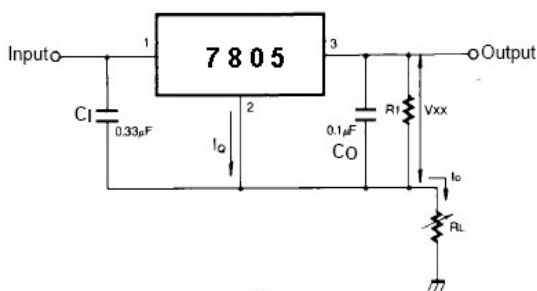


Figure 2. DC Parameters



$$I_o = \frac{V_{xx}}{R_1} + I_q$$

Figure 3. Constant Current Regulator

Ordering Information

ORDERING NUMBER	PACKAGE	MARKING
7805	TO - 220	ESTЕК

Address : 北京市海淀区永定路 88 号长银大厦 6A06--6A07

Rm 6A07, Changyin Office Building , No.88, Yong Ding Road, Hai Dian District , Beijing

Postalcode: 100039

Tel: 86-010-58895780 / 81 / 82 / 83 / 84 Fax : 010-58895793

Http://www.estek.com.cn

Email: sales@estek.com.cn

REV No: 01-060801