

C&K YM Series

4 Tumbler Miniature Switchlocks

Features/Benefits

- Snap-together assembly allows for pre-wiring of switch
- Wire lead terminations available
- 4 Tumbler lock with positive detent

Typical Applications

- Cable TV connectors
- Automotive accessories
- Computers



Specifications

CONTACT RATING: Q contact material: 4 AMPS @ 125 V AC or 28 V DC; 2 AMPS @ 250 V AC (UL/CSA). 4 AMPS @ 125 V AC, 2 AMPS @ 250 V AC, T65, class 1 (VDE). See page M-17 for additional ratings.

ELECTRICAL LIFE: 10,000 make-and-break cycles at full load.

CONTACT RESISTANCE: Below 10 m Ω typ. initial @ 2-4 V DC, 100 mA.

INSULATION RESISTANCE: $10^9 \Omega$ min.

DIELECTRIC STRENGTH: 1,000 Vrms min. @ sea level.

INDEXING: 90°:2 positions.

Materials

LOCK: Zinc alloy with stainless steel facing. 4 tumbler single bitted lock with integral detent mechanism.

KEYS: Two nickel plated brass keys with code number.

SWITCH HOUSING: 6/6 Nylon (UL 94V-2).

CONTACTS & TERMINALS: Q contact material: Copper, silver plated. See page M-17 for additional contact materials.

MOUNTING NUT: Brass, bright zinc plated.

NOTE: Any models supplied with Q or B contact material are RoHS compliant. For the latest information regarding RoHS compliance, please go to: www.ittcannon.com/rohs.

NOTE: Specifications and materials listed above are for switchlocks with standard options. For information on specific and custom switchlocks, consult Customer Service Center.

Build-A-Switch

To order, simply select desired option from each category and place in the appropriate box. Available options are shown and described on pages M-16 and M-17. For additional options not shown in catalog, consult Customer Service Center.

<div>Switch and Lock Function</div> <div>YM0613 SPST, 90° Index, keypull pos. 1</div> <div>YM061U SPST, 90° Index, keypull pos. 1 & 2</div>	<div>Keying</div> <div>2 Two nickel plated brass keys</div>	<div>Lock Type</div> <div>C 4 Tumbler, single bitted lock with detent</div>	<div>Lock Finish</div> <div>2 Stainless steel facing</div> <div>8 Gloss black facing</div>	<div>Terminations</div> <div>05 Quick connect</div> <div>WC Wire lead</div>	<div>Mounting Style</div> <div>N With nut</div>	<div>Contact Material</div> <div>Q Silver</div> <div>B Gold</div>
---	---	---	--	---	---	---



Switchlock



Dimensions are shown: Inch (mm)
Specifications and dimensions subject to change

C&K YM Series 4 Tumbler Miniature Switchlocks

NO. POLES	MODEL NO.	SWITCH FUNCTION		KEY PULL POSITIONS	LOCK CONFIGURATION	INDEXING	SCHEMATIC
		POS. 1	POS. 2				
SP	YM0613	OFF	ON	Position 1		90°	
	YM061U			Positions 1 & 2			

SPST

Top View Dimensions:

- Overall Width: 2.458 (62, 43)
- Terminal Spacing: 1.336 (33, 93)
- Terminal Width: .485 (12, 32)
- Mounting Hole Diameter: .592 DIA (15, 04 ϕ)
- Terminal Hole Diameter: .202 (5, 13)

Side View Dimensions:

- Terminal Spacing: 1.336 (33, 93)
- Terminal Width: .485 (12, 32)
- Mounting Hole Diameter: .592 DIA (15, 04 ϕ)
- Terminal Hole Diameter: .202 (5, 13)

End View Dimensions:

- Overall Width: .415 (10, 54)
- Terminal Spacing: .270 TYP (6, 86)
- Terminal Width: .110 x .032 (2, 79) x (0, 79) TYP

Part number shown: YM0613C205NQ

M12 x 1.25 6g THD.
(MOUNTING NUT INCLUDED)

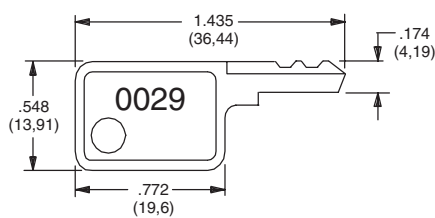
All models    with all options when ordered with 'Q' contact material.

LEGEND

- = Detent Positions (90°)
- ⊙ = Key pull possible in these positions
- ⦿ = Stop Positions

A diagram showing a linear data structure. It consists of a long black rectangle on the left, followed by a white rectangle, and then a sequence of six smaller white rectangles connected by horizontal lines. This represents a pointer to a linked list.

2 TWO NICKEL PLATED BRASS KEYS

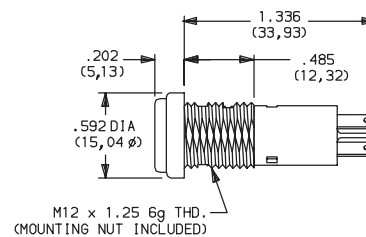


Key part number: 119091029

NOTE: All orders keyed alike with code number on key. For more than one key code, replacement keys, or other special features, consult Customer Service Center.

A diagram showing a linear sequence of nodes. A black rectangle is connected to a small black square, which is connected to a white square. This white square is connected to a sequence of four smaller white squares, each connected to the next by a horizontal line.

C 4 TUMBLER SINGLE BITTED LOCK WITH DETENT



2 STAINLESS STEEL FACING

8 GLOSS BLACK FACING

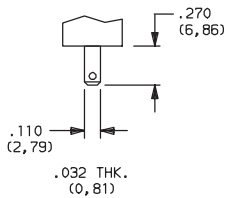


Dimensions are shown: Inch (mm)
Specifications and dimensions subject to change

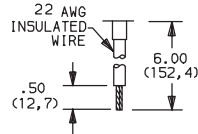
C&K YM Series 4 Tumbler Miniature Switchlocks

TERMINATIONS

05 QUICK CONNECT



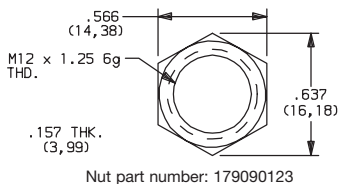
WC WIRE LEAD



Black wire standard, other colors and lengths available, consult Customer Service Center. UL style 1015.

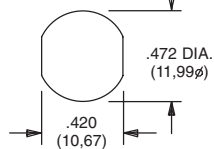
MOUNTING STYLE

N WITH NUT



Nut part number: 179090123

PANEL MOUNTING



Panel thickness:
.300 (7, 62) max.

CONTACT MATERIAL

OPTION CODE	RoHS COMPLIANT*	RoHS COMPATIBLE*	CONTACT AND TERMINAL MATERIAL	RATING	
Q	YES	YES	SILVER ²	POWER	4 AMPS @ 125 V AC or 28 V DC; 2 AMPS @ 250 V AC (UL/CSA).
B	YES	YES	GOLD ¹	LOW LEVEL/DRY CIRCUIT	0.4 VA MAX. @ 20 V AC or DC MAX.

* Note: See Technical Data section of this catalog for RoHS compliant and compatible definitions and specifications.

¹ CONTACTS & TERMINALS: Copper, with gold plate over nickel plate.

² CONTACTS & TERMINALS: Copper, silver plated (standard with all termination options).

All models    with all options when ordered with 'Q' contact material.

AVAILABLE HARDWARE



Key Code: 0029

PART NO. (ONE KEY)

119091029

Material: Brass
Finish: Nickel plate



Dimensions are shown: Inch (mm)
Specifications and dimensions subject to change



M

Switchlock