
| |
|-----------------------|
| Hall Effect Switch IC |
|-----------------------|

Features:

- Operates from 2.4V to 26V supply voltage with reverse voltage protection
- Operates with magnetic fields from DC to 15kHz
- On-chip Hall Sensor
- On-chip temperature compensation circuitry minimizes shifts in on and off points and hysteresis over temperature and supply voltage
- Ideal sensor for speed measurement, revolution counting, positioning, and DC brushless motors
- On(L) with magnetic **South** pole and Off (H) with **North** pole

Functional Description :

WSH181 is designed to integrate Hall sensor with output driver together on the same chip, it is suitable for speed measurement, revolution counting, positioning, and DC brushless motors. It includes a temperature compensated voltage regulator, a differential amplifier, a Hysteresis controller and a open-collector output driver capable of sinking up to 20mA current load. An on-chip protection resistor is implemented to prevent reverse power fault.

The temperature-dependent bias increases the supply voltage of the hall plates and adjusts the switching points to the decreasing induction of magnets at higher temperatures. Subsequently, the open collector output switches to the appropriate state. WSH181 are rated for operation over temperature range from -40°C to 125°C and voltage ranges from 2.4V to 26V.

Pin Descriptions:

| Name | P/I/O | Pin# | Description |
|------|-------|------|-----------------------|
| Vdd | P | 1 | Positive Power Supply |
| Gnd | O | 2 | Ground |
| Vout | O | 3 | Output Pin |

Absolute Maximum Rating (at $T_a=25^{\circ}\text{C}$)

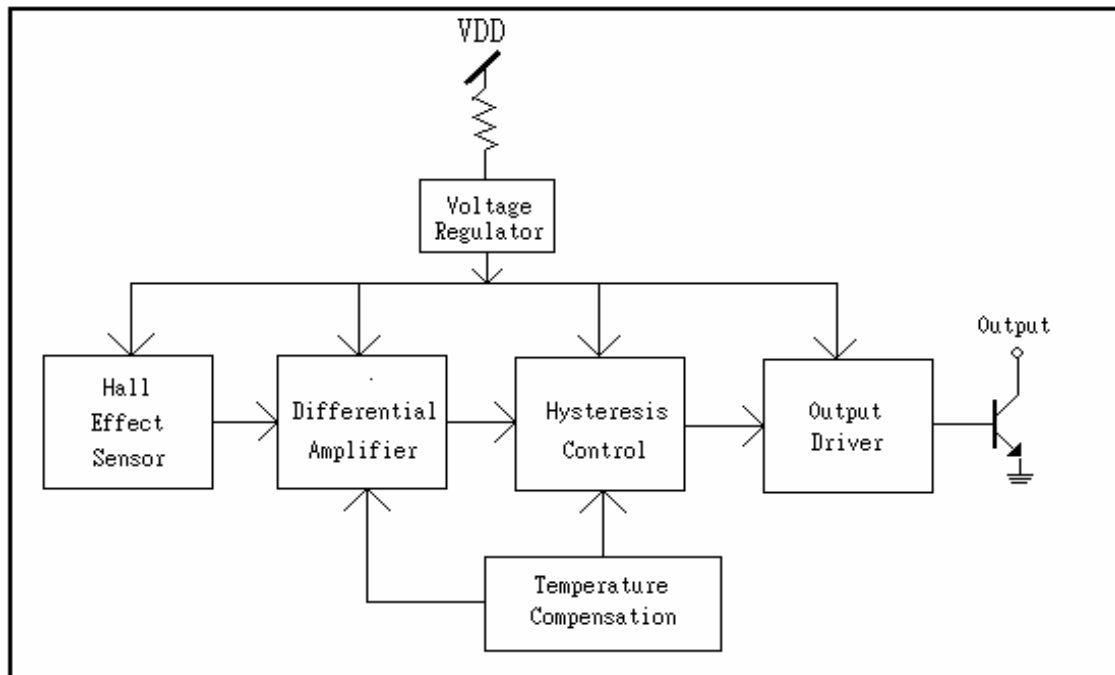
| | | |
|--------------------------|-----------------------------------|-----------|
| Supply Voltage | Vcc ----- | 26V |
| Output breakdown Voltage | Vout _(breakdown) ----- | 30V |
| Magnetic flux density | B ----- | Unlimited |

Winson reserves the right to make changes to improve reliability or manufacturability.

| | | | |
|--------------------------------|----|-------|-------------------|
| Reverse Protection Voltage | Vr | ----- | 26V |
| Output ON Current (continuous) | Ic | ----- | 25mA |
| Operating Temperature Range | Ta | ----- | (-40°C to +125°C) |
| Storage Temperature Range | Ts | ----- | (-65°C to +150°C) |
| Package Power Dissipation | Pd | ----- | 500mw |

Electrical Characteristics: (T=+25°C, Vcc=2.4V to 26V)

| Characteristic | Symbol | Test Conditions | Min | Typ | Max | Units |
|---------------------------|------------|------------------------------------|-----|------|-----|---------|
| Supply Voltage | Vcc | — | 2.4 | — | 26 | V |
| Output Saturation Voltage | Vout (sat) | Vcc=12V, Ic=10mA B > Bop | — | 0.2 | 0.6 | V |
| Output Leakage Current | Ileakage | Vcc=12V, B<Brp | — | <0.1 | 10 | uA |
| Supply Current | Isupply | Vcc=12V, Output Open | — | 2.8 | 8 | mA |
| Output Rise Time | Tr | Vcc=12V, RL=2K Ω CL=20Pf | — | 1.0 | 10 | μ s |
| Output Falling Time | Tf | Vcc=12V, RL=2K Ω CL=20Pf | — | 0.3 | 1.5 | μ s |

Function Block:


Winson reserves the right to make changes to improve reliability or manufacturability.

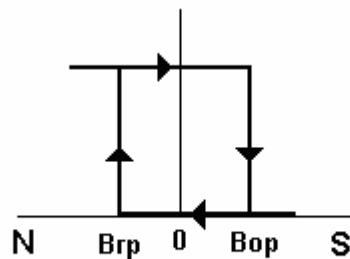
Magnetic Characteristics:

| Characteristic | Symbol | Grade | Min. | Typ. | Max. | Unit |
|-------------------|--------|-------|------|------|-------|-------|
| Operating Point | Bop | | +10 | + 60 | + 120 | Guass |
| Release Point | Brp | | -120 | - 60 | -10 | Guass |
| Hysteresis Window | Bhys | | | 120 | 200 | Guass |

Ordering Information:

| | |
|---|------------------------|
| WSH181-XPAN □ (TO-92) WSH181-XPCN □ (SOT23) ↑ Grade | Grade: 3: 120 Guass |
|---|------------------------|

Output vs. Magnetic Field

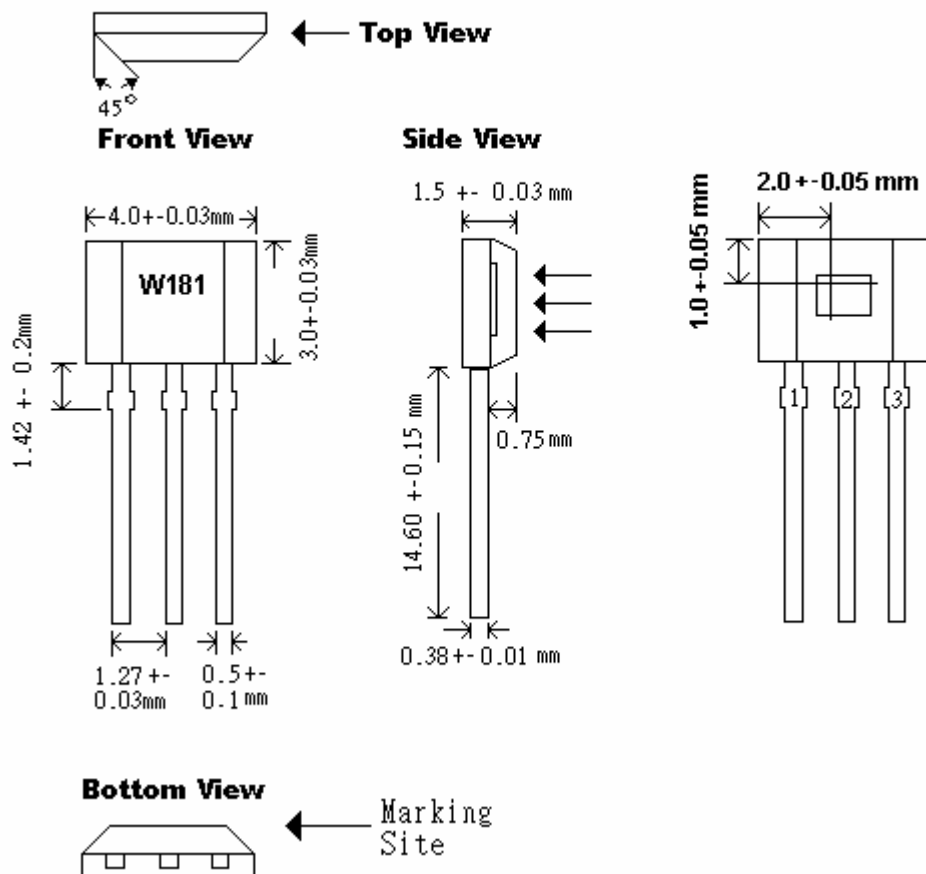


Package Information:

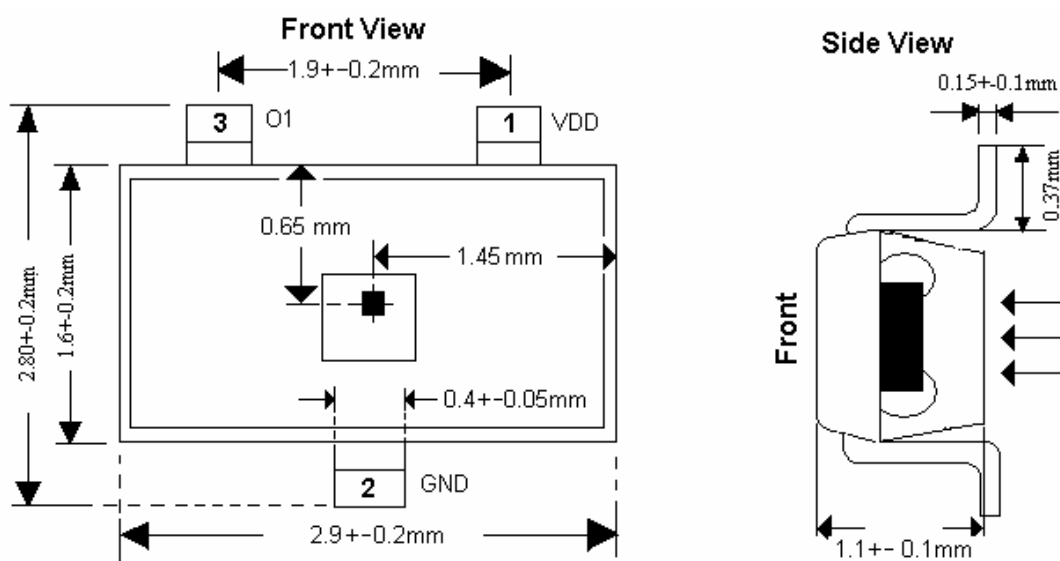
Winson reserves the right to make changes to improve reliability or manufacturability.

Package Dimension

Hall Sensor Location



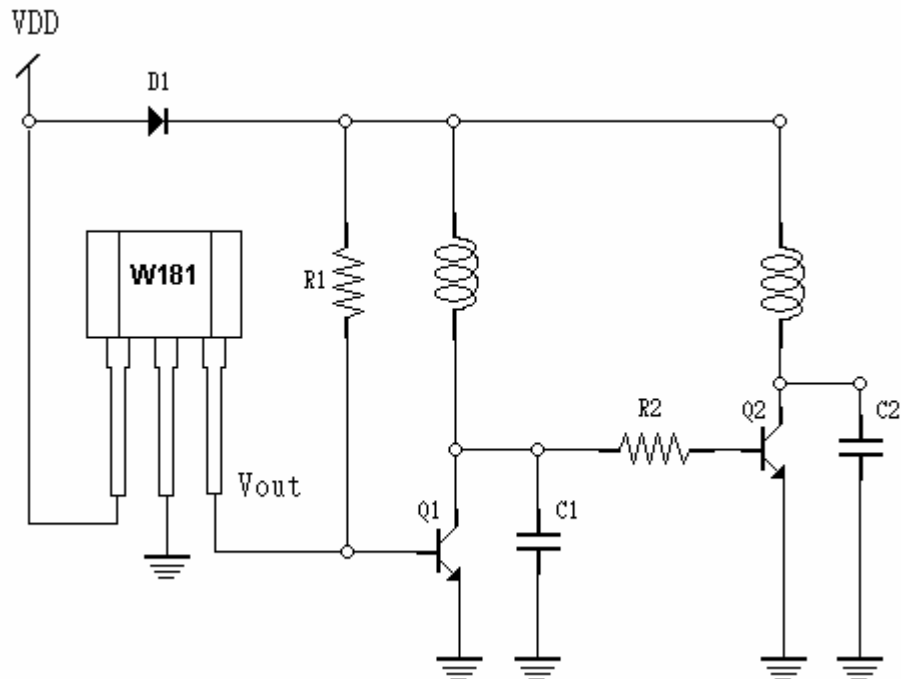
SOT23:



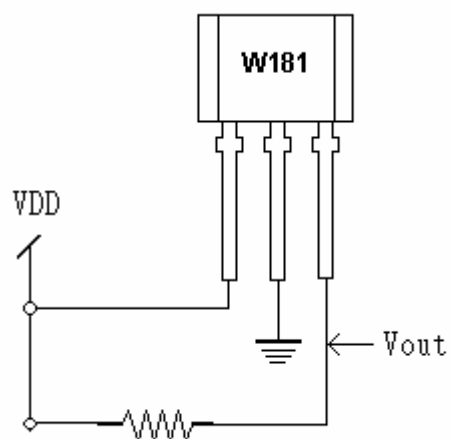
Winson reserves the right to make changes to improve reliability or manufacturability.

Application Circuit:

Fan Application:



Magnetic detector:



Winson reserves the right to make changes to improve reliability or manufacturability.