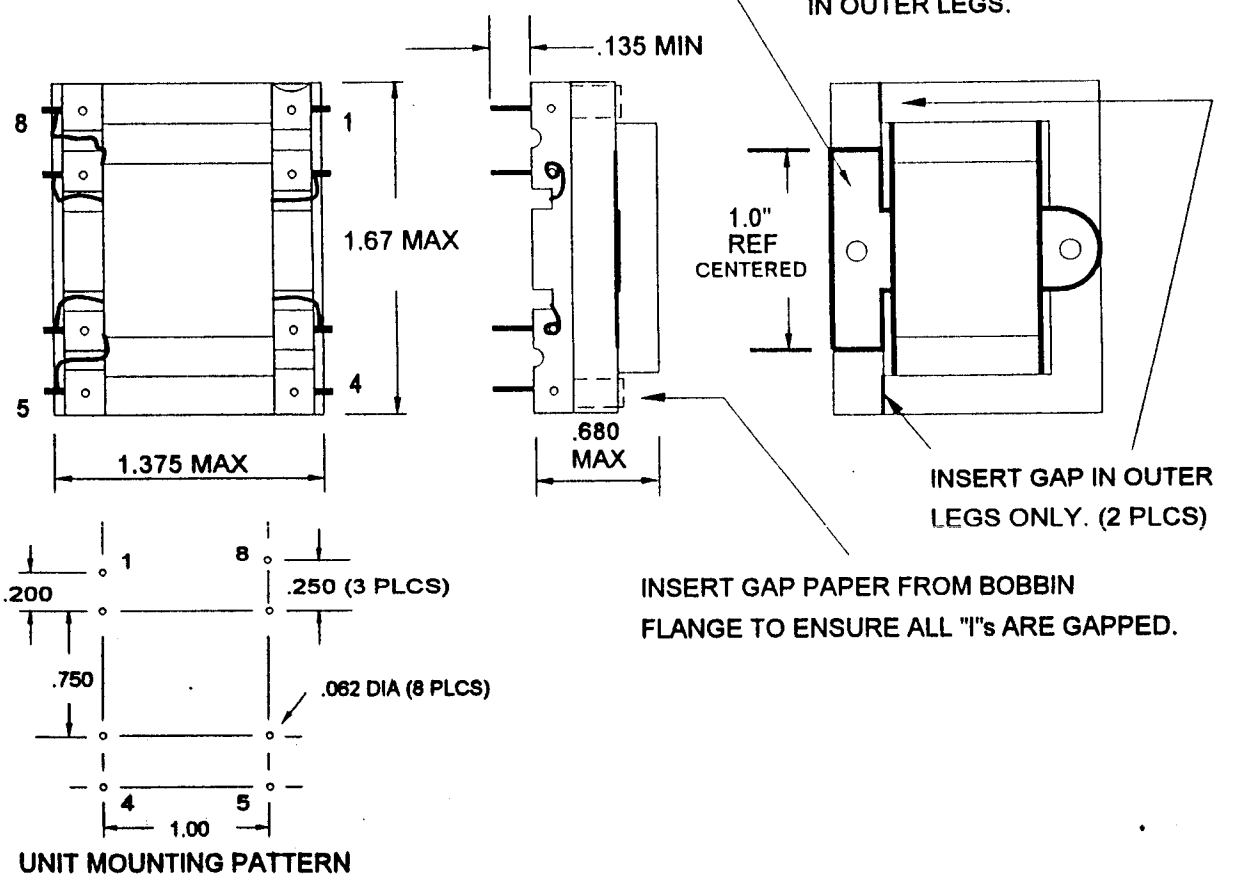


TY-306P.DC2



## PRODUCTION TESTS

Turns Ratio: 100%

DC  
RESISTANCE  
IN OHMS  
NOM

5-6: 31

7-8: 31

2-3: 108

APPLY: 1V 300Hz .100 ADC 6-7 TIE 5 & 8

INDUCTANCE: 510 mHY MIN(PARALLEL MODE)

HIPOT: 1500V (EACH P)-S,C S-C

IMPREGNATION NOTES:

FINAL ASSEMBLY NOTES

**MagneTek**

METHOD  
BUTT W/ .005" GAP (CHECK)

MARKING  
PART NO. , DATECODE, SITECODE

PART NO. TY-306P