

# OKI Semiconductor

**FEDR27V802F-01-03**

Issue Date: Dec. 8, 2004

## MR27V802F

**524,288–Word x 16–Bit or 1,048,576–Word x 8–Bit One Time PROM**

### GENERAL DESCRIPTION

The MR27V802F is a 8Mbit electrically One Time Programmable Read-Only Memory that can be electrically switched between 524,288-word × 16-bit and 1,048,576-word × 8-bit by the state of the BYTE# pin. The MR27V802F supports high speed asynchronous read operation using a single 3.3V power supply.

### FEATURES

- 524,288-word × 16-bit/1,048,576-word × 8-bit electrically switchable configuration
- +3.3 V power supply
- Access time                      70 nS MAX
- Operating current                18 mA MAX (5MHz)
- Standby current                 5 µA MAX
- Input/Output TTL compatible
- Tri-state output
- Packages:

44-pin plastic SOP (SOP44-P-600-1.27-K)

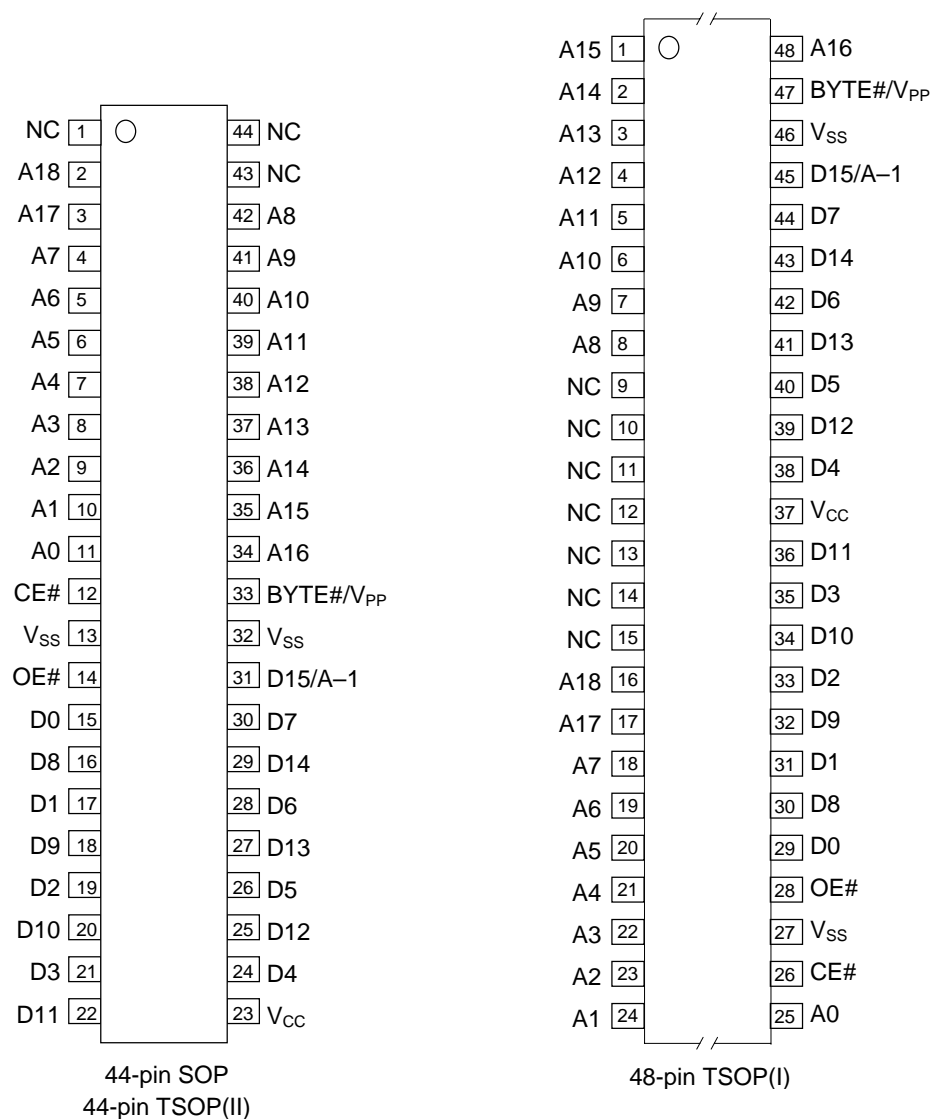
(Product Name : MR27V802FMA)

48-pin plastic TSOP (TSOP(1)48-P-1220-0.50-1K)

(Product Name : MR27V802FTN)

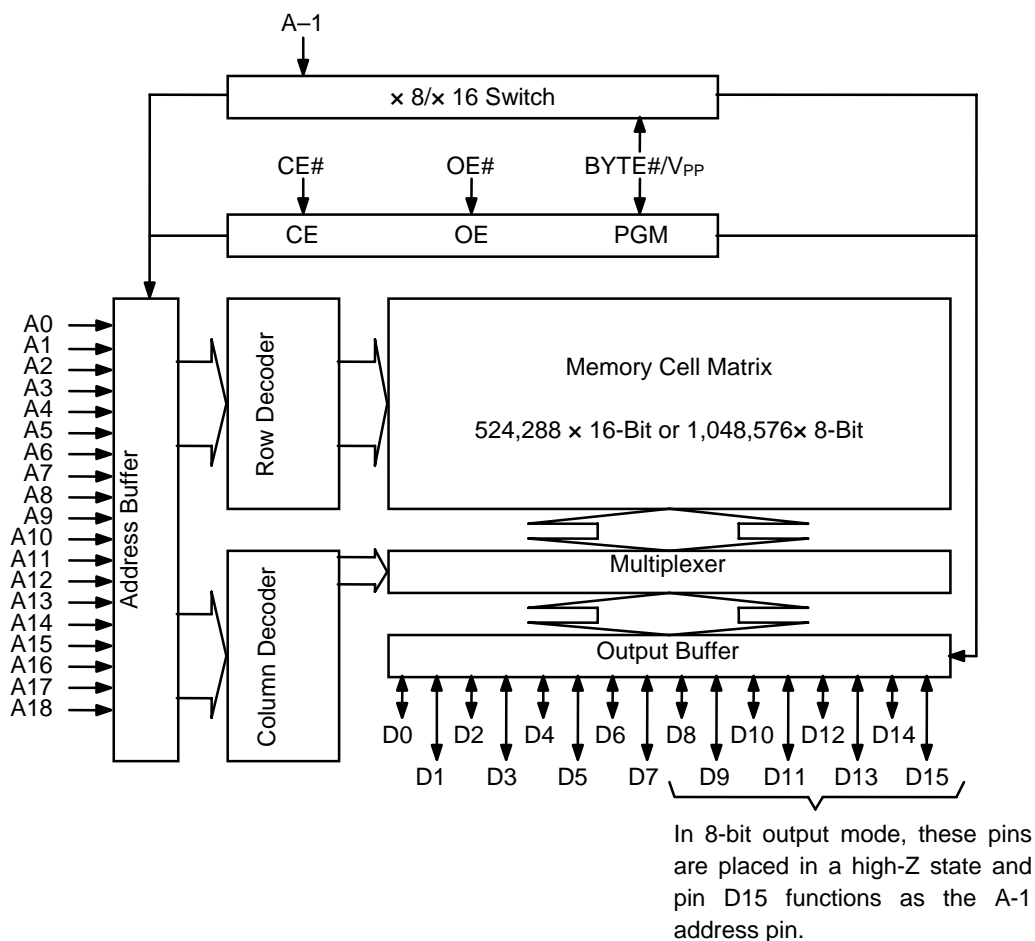
44-pin plastic TSOP (TSOP II 44-P-400-0.80-K)

(Product Name : MR27V802FTP)

**PIN CONFIGURATION (TOP VIEW)**

| Pin name              | Functions                                |
|-----------------------|--|
| D15/A-1               | Data output/Address input                |
| A0 to A18             | Address input                            |
| D0 to D14             | Data output                              |
| CE#                   | Chip enable                              |
| OE#                   | Output enable                            |
| BYTE#/V <sub>PP</sub> | Mode switch/Program power supply voltage |
| V <sub>CC</sub>       | Power supply voltage                     |
| V <sub>SS</sub>       | GND                                      |
| NC                    | Non connection                           |

## BLOCK DIAGRAM



## FUNCTION TABLE

| Mode            | CE# | OE# | BYTE#/V <sub>PP</sub> | V <sub>CC</sub> | D0 to D7         | D8 to D14 | D15/A-1 |
|-----------------|-----|-----|-----------------------|-----------------|------------------|-----------|---------|
| Read (16-Bit)   | L   | L   | H                     | 3.3 V           | D <sub>OUT</sub> |           |         |
| Read (8-Bit)    | L   | L   | L                     |                 | D <sub>OUT</sub> | Hi-Z      | L/H     |
| Output disable  | L   | H   | H                     |                 | Hi-Z             |           |         |
|                 |     |     | L                     |                 |                  |           |         |
| Standby         | H   | *   | H                     |                 | Hi-Z             |           |         |
|                 |     |     | L                     |                 |                  |           |         |
| Program         | L   | H   | 8.0 V                 | 4.0 V           | D <sub>IN</sub>  | Hi-Z      | L/H     |
| Program inhibit | H   | H   |                       |                 | Hi-Z             | Hi-Z      | L/H     |
| Program verify  | H   | L   |                       |                 | D <sub>OUT</sub> | Hi-Z      | L/H     |

\*: Don't Care (H or L)

**ABSOLUTE MAXIMUM RATINGS**

| Parameter                        | Symbol          | Condition                   | Value                        | Unit |
|----------------------------------|-----------------|-----------------------------|------------------------------|------|
| Operating temperature under bias | Ta              | —                           | 0 to 70                      | °C   |
| Storage temperature              | Tstg            |                             | −55 to 125                   | °C   |
| Input voltage                    | V <sub>I</sub>  | relative to V <sub>SS</sub> | −0.5 to V <sub>CC</sub> +0.5 | V    |
| Output voltage                   | V <sub>O</sub>  |                             | −0.5 to V <sub>CC</sub> +0.5 | V    |
| Power supply voltage             | V <sub>CC</sub> |                             | −0.5 to 5                    | V    |
| Program power supply voltage     | V <sub>PP</sub> |                             | −0.5 to 9.0                  | V    |
| Power dissipation per package    | P <sub>D</sub>  | Ta = 25°C                   | 1.0                          | W    |
| Output short circuit current     | I <sub>OS</sub> | —                           | 10                           | mA   |

**RECOMMENDED OPERATING CONDITIONS**

(Ta = 0 to 70°C)

| Parameter                            | Symbol          | Condition                      | Min.   | Typ. | Max.                  | Unit |
|--------------------------------------|-----------------|--------------------------------|--------|------|-----------------------|------|
| V <sub>CC</sub> power supply voltage | V <sub>CC</sub> | V <sub>CC</sub> = 3.0 to 3.6 V | 3.0    | —    | 3.6                   | V    |
| V <sub>PP</sub> power supply voltage | V <sub>PP</sub> |                                | −0.5   | —    | V <sub>CC</sub> +0.5  | V    |
| Input “H” level                      | V <sub>IH</sub> |                                | 2.2    | —    | V <sub>CC</sub> +0.5* | V    |
| Input “L” level                      | V <sub>IL</sub> |                                | −0.5** | —    | 0.6                   | V    |

Voltage is relative to V<sub>SS</sub>.\* : V<sub>CC</sub>+1.5V(Max.) when pulse width of overshoot is less than 10ns.

\*\* : −1.5V(Min.) when pulse width of undershoot is less than 10ns.

## ELECTRICAL CHARACTERISTICS

### DC Characteristics

( $V_{CC} = 3.3 \text{ V} \pm 0.3 \text{ V}$ ,  $T_a = 0 \text{ to } 70^\circ\text{C}$ )

| parameter                                  | Symbol     | Condition  | Min.   | Typ. | Max.           | Unit          |
|--|------------|--|--------|------|----------------|---------------|
| Input leakage current                      | $I_{LI}$   | $V_I = 0 \text{ to } V_{CC}$                         | —      | —    | 5              | $\mu\text{A}$ |
| Output leakage current                     | $I_{LO}$   | $V_O = 0 \text{ to } V_{CC}$                         | —      | —    | 5              | $\mu\text{A}$ |
| $V_{CC}$ power supply current<br>(Standby) | $I_{CCSC}$ | $CE\# = V_{CC}$                                      | —      | —    | 5              | $\mu\text{A}$ |
|  | $I_{CCST}$ | $CE\# = V_{IH}$                                      | —      | —    | 1              | $\text{mA}$   |
| $V_{CC}$ power supply current<br>(Read)    | $I_{CCA}$  | $CE\# = V_{IL}$ , $OE\# = V_{IH}$<br>$f=5\text{MHz}$ | —      | —    | 18             | $\text{mA}$   |
| $V_{PP}$ power supply current              | $I_{PP}$   | $V_{PP} = V_{CC}$                                    | —      | —    | 10             | $\mu\text{A}$ |
| Input "H" level                            | $V_{IH}$   | —  | 2.2    | —    | $V_{CC}+0.5^*$ | V             |
| Input "L" level                            | $V_{IL}$   | —  | -0.5** | —    | 0.6            | V             |
| Output "H" level                           | $V_{OH}$   | $I_{OH} = -1 \text{ mA}$                             | 2.4    | —    | —              | V             |
| Output "L" level                           | $V_{OL}$   | $I_{OL} = 2 \text{ mA}$                              | —      | —    | 0.4            | V             |

Voltage is relative to  $V_{SS}$ .

\* :  $V_{CC}+1.5\text{V}(\text{Max.})$  when pulse width of overshoot is less than 10ns.

\*\* :  $-1.5\text{V}(\text{Min.})$  when pulse width of undershoot is less than 10ns.

### AC Characteristics

( $V_{CC} = 3.3 \text{ V} \pm 0.3 \text{ V}$ ,  $T_a = 0 \text{ to } 70^\circ\text{C}$ )

| Parameter           | Symbol    | Condition              | Min. | Max. | Unit |
|---------------------|-----------|------------------------|------|------|------|
| Address cycle time  | $t_C$     | —                      | 70   | —    | ns   |
| Address access time | $t_{ACC}$ | $CE\# = OE\# = V_{IL}$ | —    | 70   | ns   |
| CE# access time     | $t_{CE}$  | $OE\# = V_{IL}$        | —    | 70   | ns   |
| OE# access time     | $t_{OE}$  | $CE\# = V_{IL}$        | —    | 25   | ns   |
| Output disable time | $t_{CHZ}$ | $OE\# = V_{IL}$        | 0    | 20   | ns   |
|                     | $t_{OHZ}$ | $CE\# = V_{IL}$        | 0    | 20   | ns   |
| Output hold time    | $t_{OH}$  | $CE\# = OE\# = V_{IL}$ | 0    | —    | ns   |

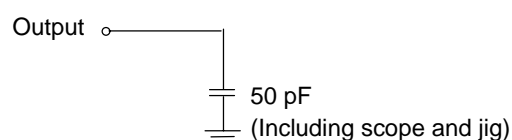
#### Measurement conditions

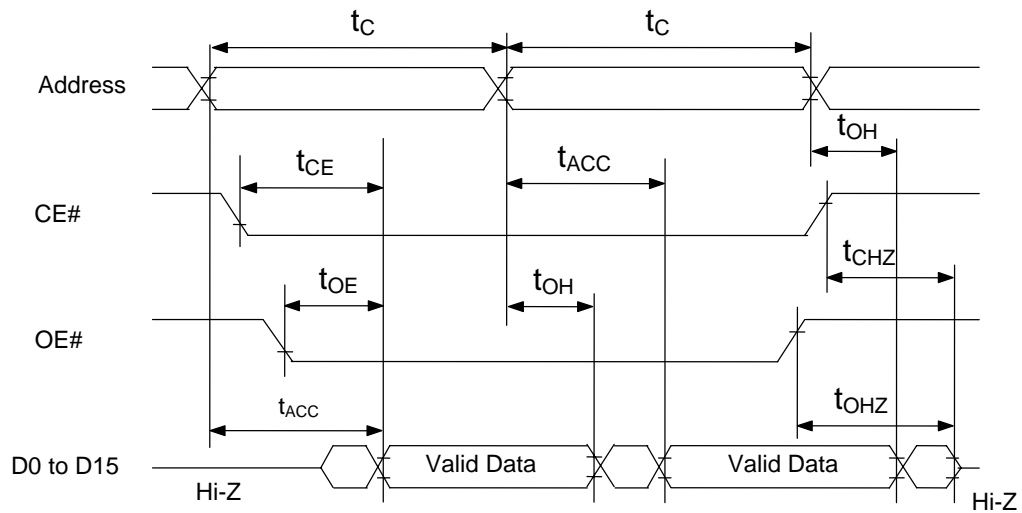
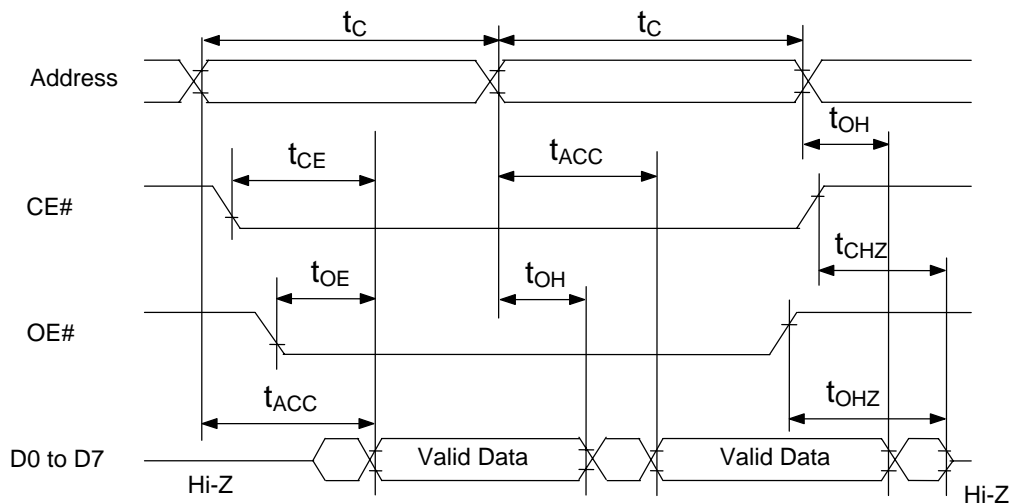
Input signal level ----- 0 V/3 V

Input timing reference level----- 1/2V<sub>CC</sub>

Output load ----- 50 pF

Output timing reference level ----- 1/2V<sub>CC</sub>



**TIMING CHART (READ CYCLE)****16-Bit Read Mode (BYTE# = V<sub>IH</sub>)****8-Bit Read Mode (BYTE# = V<sub>IL</sub>)**

**ELECTRICAL CHARACTERISTICS (PROGRAMMING OPERATION)****DC Characteristics**

(Ta = 25°C ± 5°C)

| Parameter                                      | Symbol           | Condition                               | Min. | Typ. | Max.                 | Unit |
|--|------------------|---|------|------|----------------------|------|
| Input leakage current                          | I <sub>LI</sub>  | V <sub>I</sub> = V <sub>CC</sub> +0.5 V | —    | —    | 10                   | μA   |
| V <sub>PP</sub> power supply current (Program) | I <sub>PP2</sub> | CE# = V <sub>IL</sub>                   | —    | —    | 50                   | mA   |
| V <sub>CC</sub> power supply current           | I <sub>CC</sub>  | —                                       | —    | —    | 50                   | mA   |
| Input “H” level                                | V <sub>IH</sub>  | —                                       | 3.0  | —    | V <sub>CC</sub> +0.5 | V    |
| Input “L” level                                | V <sub>IL</sub>  | —                                       | −0.5 | —    | 0.8                  | V    |
| Output “H” level                               | V <sub>OH</sub>  | I <sub>OH</sub> = −400 μA               | 2.4  | —    | —                    | V    |
| Output “L” level                               | V <sub>OL</sub>  | I <sub>OL</sub> = 2.1 mA                | —    | —    | 0.45                 | V    |
| Program voltage                                | V <sub>PP</sub>  | —                                       | 7.75 | 8.0  | 8.25                 | V    |
| V <sub>CC</sub> power supply voltage           | V <sub>CC</sub>  | —                                       | 3.9  | 4.0  | 4.1                  | V    |

Voltage is relative to V<sub>SS</sub>.**AC Characteristics**(V<sub>CC</sub> = 4.0 V ± 0.1 V, BYTE#/V<sub>PP</sub> = 8.0 V ± 0.25 V, Ta = 25°C ± 5°C)

| Parameter                           | Symbol           | Condition | Min. | Typ. | Max. | Unit |
|-------------------------------------|------------------|-----------|------|------|------|------|
| Address set-up time                 | t <sub>AS</sub>  | —         | 100  | —    | —    | ns   |
| OE# set-up time                     | t <sub>OES</sub> | —         | 2    | —    | —    | μs   |
| Data set-up time                    | t <sub>DS</sub>  | —         | 100  | —    | —    | ns   |
| Address hold time                   | t <sub>AH</sub>  | —         | 2    | —    | —    | μs   |
| Data hold time                      | t <sub>DH</sub>  | —         | 100  | —    | —    | ns   |
| Output float delay time from OE#    | t <sub>OHZ</sub> | —         | 0    | —    | 100  | ns   |
| V <sub>PP</sub> voltage set-up time | t <sub>VS</sub>  | —         | 2    | —    | —    | μs   |
| Program pulse width                 | t <sub>PW</sub>  | —         | 9    | 10   | 11   | μs   |
| Data valid from OE#                 | t <sub>OE</sub>  | —         | —    | —    | 100  | ns   |
| Address hold from OE# high          | t <sub>AOH</sub> | —         | 0    | —    | —    | ns   |

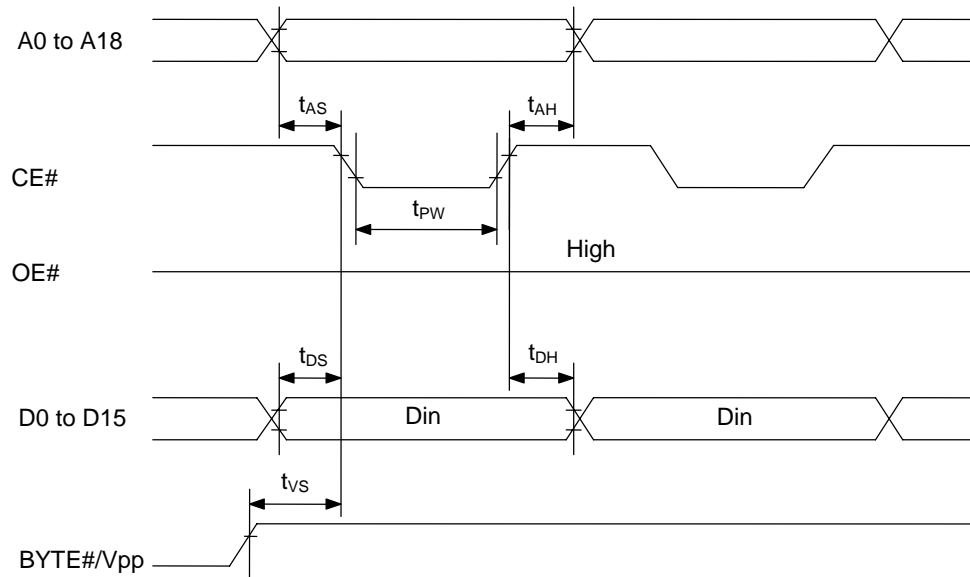
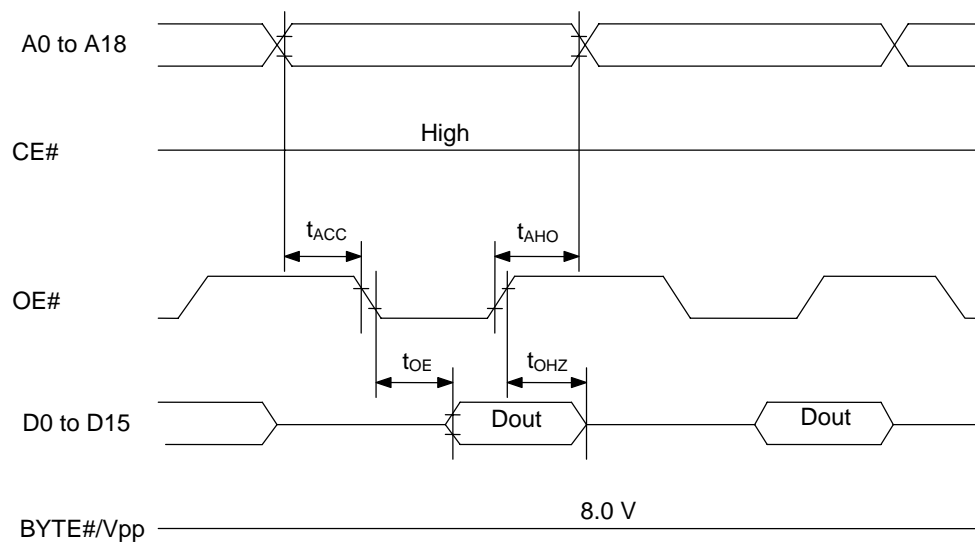
**Pin Check Function**

Pin Check Function is to check contact between each device-pin and each socket-lead with EPROM programmer. Setting up address as following condition call the preprogrammed codes on device outputs.

(V<sub>CC</sub> = 3.3 V ± 0.1 V, CE# = V<sub>IL</sub>, OE# = V<sub>IL</sub>, BYTE#/V<sub>PP</sub> = V<sub>IH</sub>, Ta = 25°C ± 5°C)

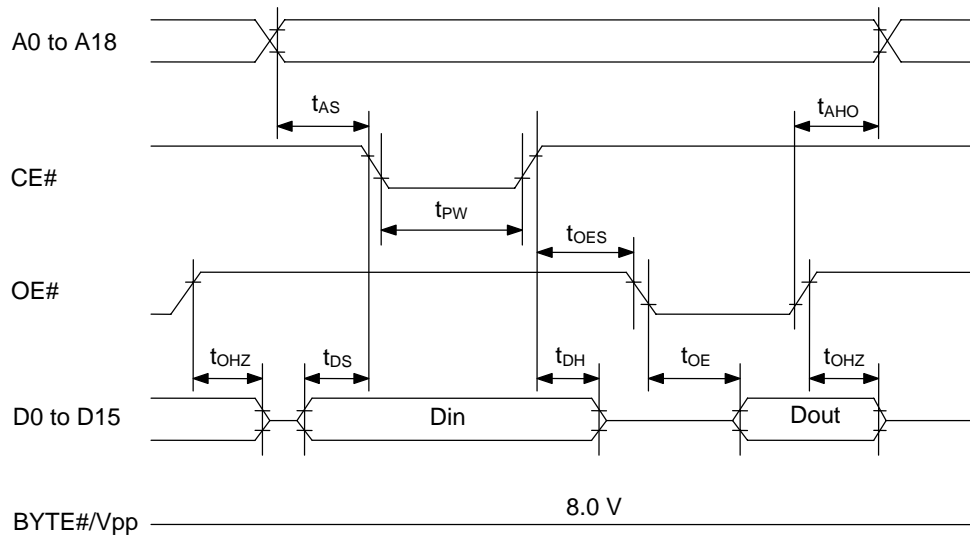
| A0               | A1 | A2 | A3 | A4 | A5 | A6 | A7 | A8 | A9  | A10 | A11 | A12 | A13 | A14 | A15 | A16 | A17 | A18 | DATA |
|------------------|----|----|----|----|----|----|----|----|-----|-----|-----|-----|-----|-----|-----|-----|-----|-----|------|
| 0                | 1  | 0  | 1  | 0  | 1  | 0  | 1  | 0  | VH* | 0   | 1   | 0   | 1   | 0   | 1   | 0   | 0   | 1   | 00FF |
| 1                | 0  | 1  | 0  | 1  | 0  | 1  | 0  | 1  | VH* | 1   | 0   | 1   | 0   | 1   | 0   | 1   | 1   | 0   | FF00 |
| Other conditions |    |    |    |    |    |    |    |    |     |     |     |     |     |     |     |     |     |     | FFFF |

\*: VH = 7.0V ± 0.25 V

**Consecutive Programming Waveforms****Consecutive Program Verify Waveforms**



### Program And Program Verify Cycle Waveforms

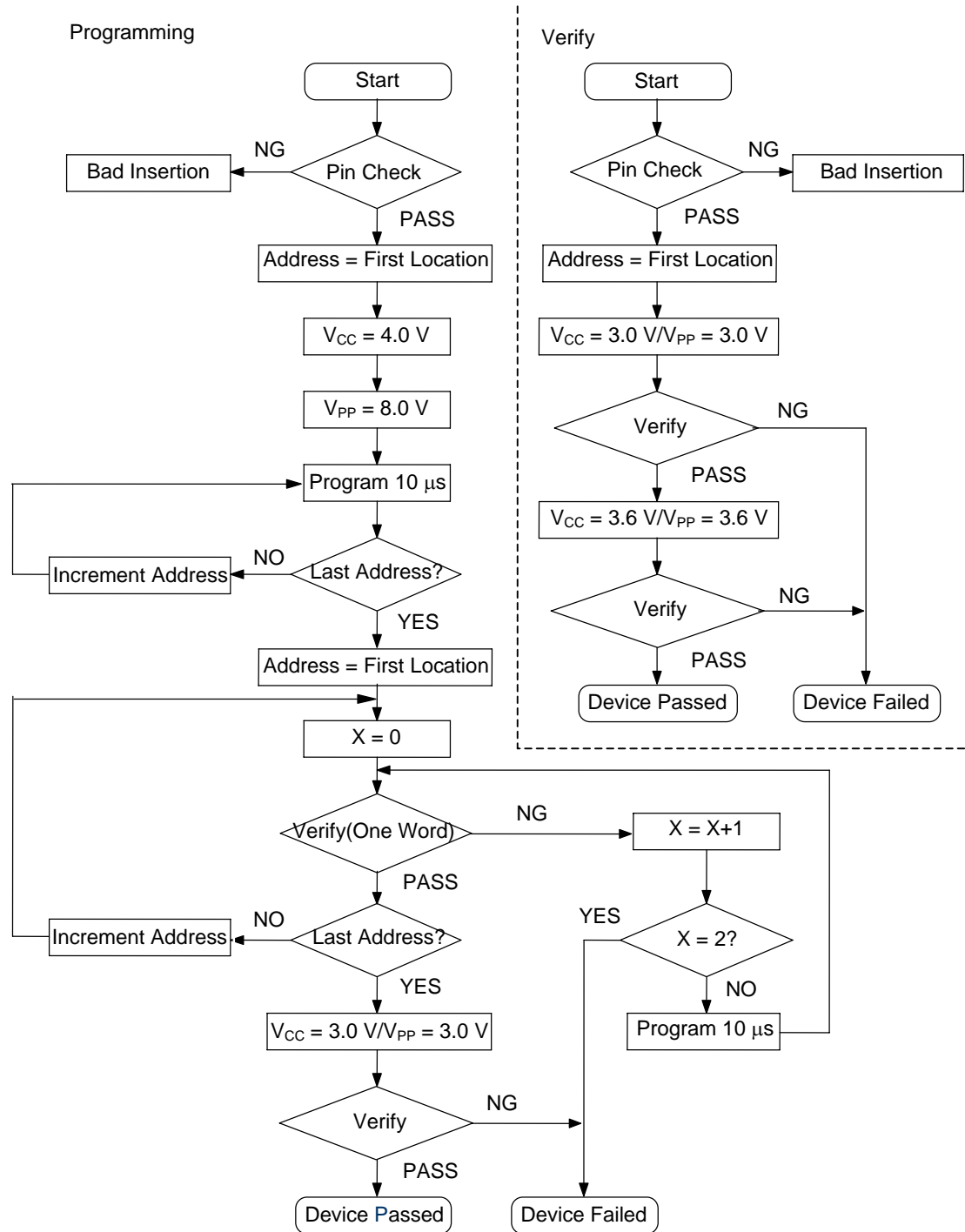


### Pin Capacitance

( $V_{CC} = 3.3\text{ V}$ ,  $T_a = 25^\circ\text{C}$ ,  $f = 1\text{ MHz}$ )

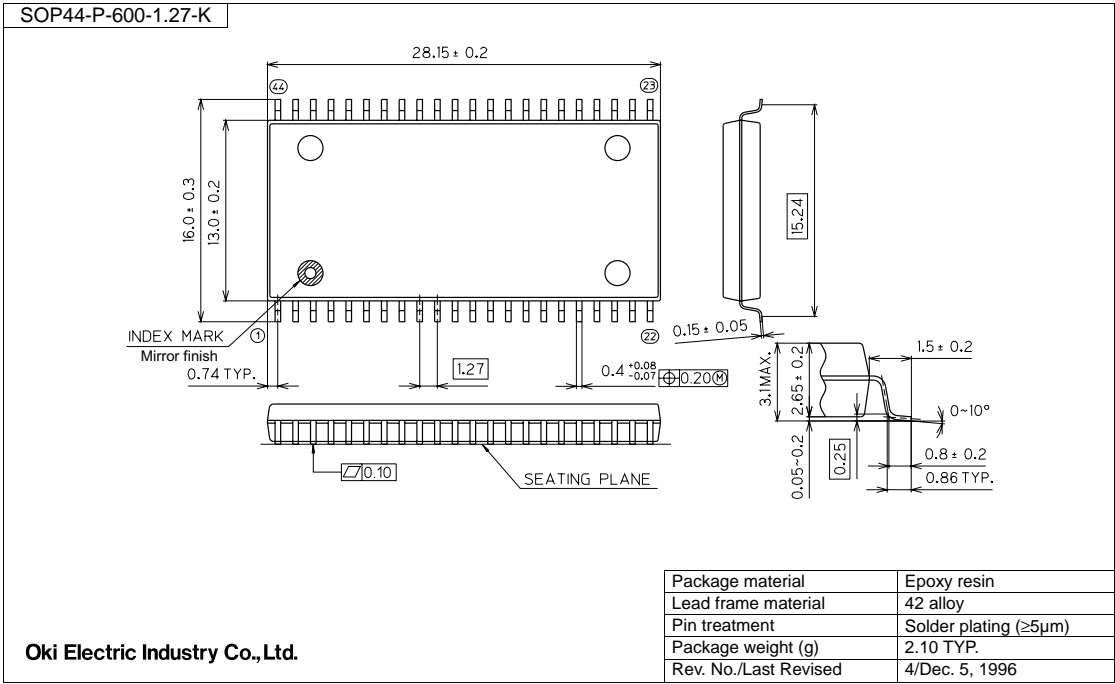
| Parameter             | Symbol    | Condition          | Min. | Typ. | Max. | Unit |
|-----------------------|-----------|--------------------|------|------|------|------|
| Input                 | $C_{IN1}$ | $V_I = 0\text{ V}$ | —    | —    | 8    | pF   |
| BYTE#/V <sub>pp</sub> | $C_{IN2}$ |                    | —    | —    | 100  |      |
| Output                | $C_{OUT}$ | $V_O = 0\text{ V}$ | —    | —    | 10   |      |

## Programming/Verify Flow Chart



PACKAGE DIMENSIONS

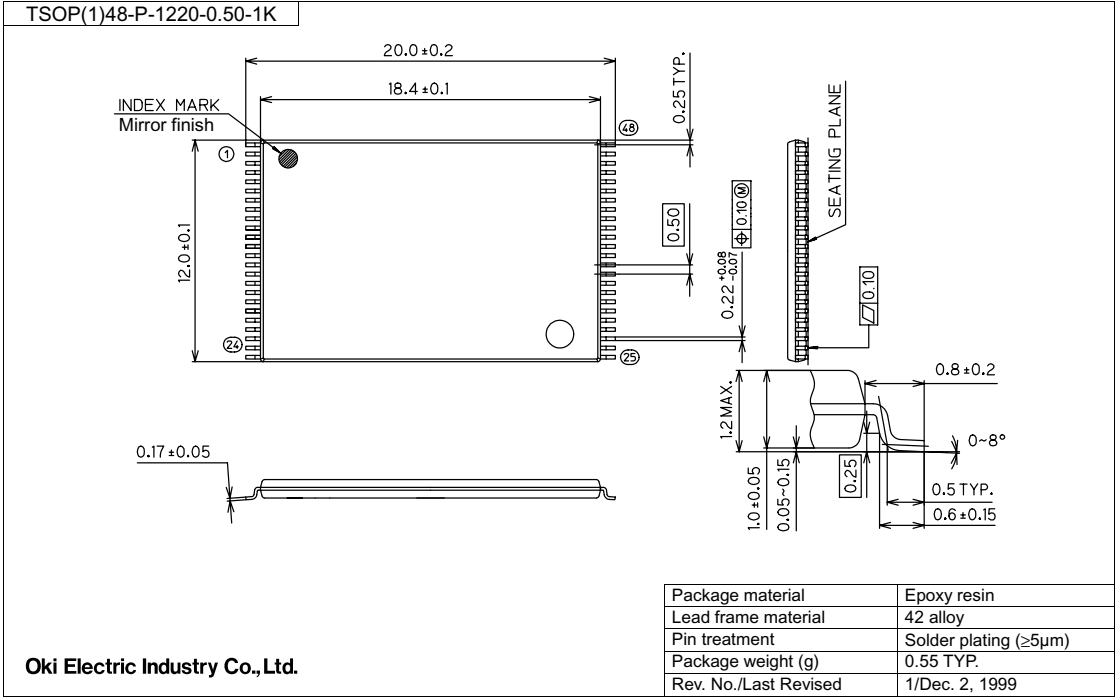
(Unit: mm)



Notes for Mounting the Surface Mount Type Package

The surface mount type packages are very susceptible to heat in reflow mounting and humidity absorbed in storage.  
Therefore, before you perform reflow mounting, contact Oki's responsible sales person for the product name, package name, pin number, package code and desired mounting conditions (reflow method, temperature and times).

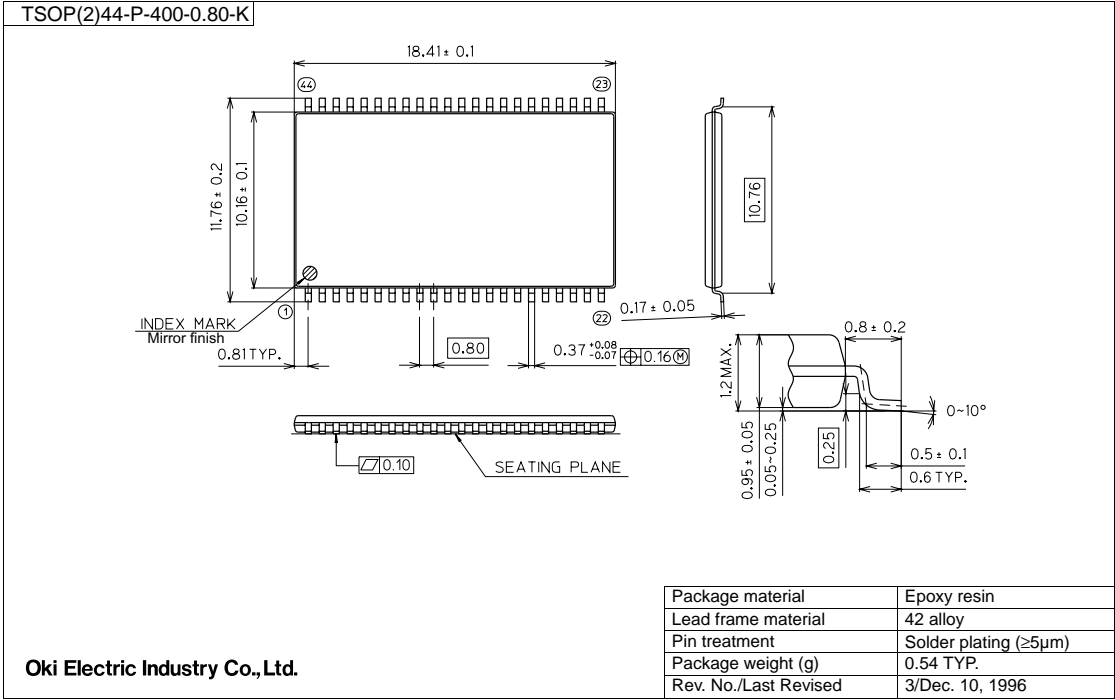
(Unit: mm)



Notes for Mounting the Surface Mount Type Package

The surface mount type packages are very susceptible to heat in reflow mounting and humidity absorbed in storage.  
Therefore, before you perform reflow mounting, contact Oki's responsible sales person for the product name, package name, pin number, package code and desired mounting conditions (reflow method, temperature and times).

(Unit: mm)



Notes for Mounting the Surface Mount Type Package

The surface mount type packages are very susceptible to heat in reflow mounting and humidity absorbed in storage.  
Therefore, before you perform reflow mounting, contact Oki's responsible sales person for the product name, package name, pin number, package code and desired mounting conditions (reflow method, temperature and times).

**REVISION HISTORY**

| Document No.      | Date          | Page             |                 | Description   |
|-------------------|---------------|------------------|-----------------|---|
|                   |               | Previous Edition | Current Edition |   |
| FEDR27V802F-01-01 | Jan. 15, 2004 | –                | –               | Final edition 1   |
| FEDR27V802F-01-02 | Jul. 9, 2004  | 1, 2<br>4        | 1, 2, 11<br>4   | Add MR27V802FMA<br>Add $P_D$ condition and $I_{OS} = 10\text{mA}$ |
| FEDR27V802F-01-03 | Dec. 8, 2004  | 1, 2             | 1, 2, 13        | Add MR27V802FTP   |

NOTICE

1. The information contained herein can change without notice owing to product and/or technical improvements. Before using the product, please make sure that the information being referred to is up-to-date.
2. The outline of action and examples for application circuits described herein have been chosen as an explanation for the standard action and performance of the product. When planning to use the product, please ensure that the external conditions are reflected in the actual circuit, assembly, and program designs.
3. When designing your product, please use our product below the specified maximum ratings and within the specified operating ranges including, but not limited to, operating voltage, power dissipation, and operating temperature.
4. Oki assumes no responsibility or liability whatsoever for any failure or unusual or unexpected operation resulting from misuse, neglect, improper installation, repair, alteration or accident, improper handling, or unusual physical or electrical stress including, but not limited to, exposure to parameters beyond the specified maximum ratings or operation outside the specified operating range.
5. Neither indemnity against nor license of a third party's industrial and intellectual property right, etc. is granted by us in connection with the use of the product and/or the information and drawings contained herein. No responsibility is assumed by us for any infringement of a third party's right which may result from the use thereof.
6. The products listed in this document are intended for use in general electronics equipment for commercial applications (e.g., office automation, communication equipment, measurement equipment, consumer electronics, etc.). These products are not, unless specifically authorized by Oki, authorized for use in any system or application that requires special or enhanced quality and reliability characteristics nor in any system or application where the failure of such system or application may result in the loss or damage of property, or death or injury to humans.  
Such applications include, but are not limited to, traffic and automotive equipment, safety devices, aerospace equipment, nuclear power control, medical equipment, and life-support systems.
7. Certain products in this document may need government approval before they can be exported to particular countries. The purchaser assumes the responsibility of determining the legality of export of these products and will take appropriate and necessary steps at their own expense for these.
8. No part of the contents contained herein may be reprinted or reproduced without our prior permission.

Copyright 2004 Oki Electric Industry Co., Ltd.