

14.2-Gbps Quad 1:2-2:1 MUX, Linear-Redriver With Signal Conditioning

Check for Samples: [SN65LVCP114](#)

FEATURES

- Quad 2:1 Mux / 1:2 Demux
- Multi-Rate Operation up to 14.2 Gbps Serial Data Rate
- Linear Receiver Equalization Which Increases Margin at System Level of Decision Feedback Equalizer
- Bandwidth: 18 GHz, Typical
- Per-Lane P/N Pair Inversion
- Port or Single Lane Switching
- Low Power: 150 mW/Channel, Typical
- Loopback Mode on All Three Ports
- I²C Control in Addition to GPIO
- DIAG Mode That Outputs Data of Line Side Port to Both Fabric Side Ports
- 2.5-V/3.3-V Single Power Supply
- PBGA Package 12-mm × 12-mm × 1-mm, 0.8-mm Terminal Pitch
- Excellent Impedance Matching to 100-Ω PCB Transmission Lines
- Small Package Size Provides Board Real Estate Saving
- Adjustable Output Swing Provides Flexible EMI and Crosstalk Control
- Low Power
- Supports 10GBASE-KR Applications With Ability to Transparency for Link Training

APPLICATIONS

- High-Speed Redundancy Switch in Telecom and Data Communication
- Backplane Interconnect for 10G-KR, 16GFC

DESCRIPTION

The SN65LVCP114 is an asynchronous, protocol-agnostic, low-latency QUAD mux, linear-redriver optimized for use in systems operating at up to 14.2 Gbps. The device linearly compensates for channel loss in backplane and active-cable applications. The architecture of SN65LVCP114 linear-redriver is designed to work effectively with ASIC or FPGA products implementing digital equalization using decision feedback equalizer (DFE) technology. The SN65LVCP114 mux, linear-redriver preserves the integrity (composition) of the received signal, ensuring optimum DFE and system performance. The SN65LVCP114 provides a low-power mux-demux, linear-redriver solution while at the same time extending the effectiveness of DFE.

SN65LVCP114 is configurable via GPIO or an I²C interface.

A single 2.5-V or 3.3-V power supply supports the operation of the SN65LVCP114.

The SN65LVCP114 is packaged in a 12-mm × 12-mm × 1-mm PBGA package with 0.8-mm pitch.

The SN65LVCP114 has three ports; each port is a quad lane. The switch logic of SN65LVCP114 can be implemented to support a 2:1 MUX per lane, 1:2 DEMUX per lane, and independent lane switching. The receive equalization can be independently programmed for each of the ports. The SN65LVCP114 supports loopback on all three ports.



Please be aware that an important notice concerning availability, standard warranty, and use in critical applications of Texas Instruments semiconductor products and disclaimers thereto appears at the end of this data sheet.

SN65LVCP114

SLLSEA8 – JANUARY 2012

www.ti.com



These devices have limited built-in ESD protection. The leads should be shorted together or the device placed in conductive foam during storage or handling to prevent electrostatic damage to the MOS gates.

TYPICAL IMPLEMENTATION

SN65LVCP114 can be implemented on the transmit side or the receive side of a backplane channel as shown in [Figure 1](#).

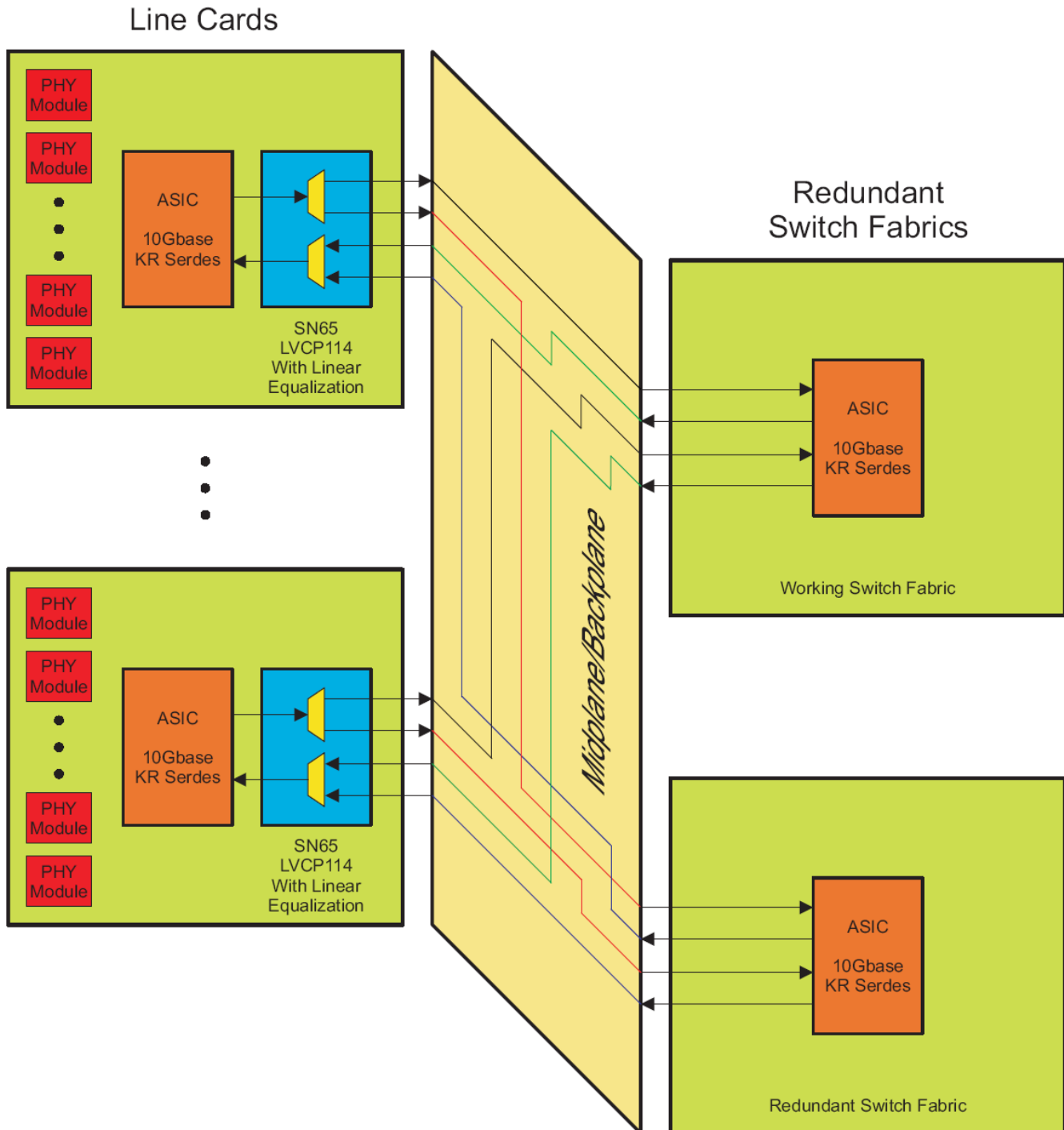


Figure 1. SN65LVCP114 Typical Implementation

BLOCK DIAGRAM

A simplified block diagram of the SN65LVCP114 is shown in Figure 2 for input quad channels AIN and BIN through the 2:1 MUX and output quad channel COUT, together with the input quad channel CIN through the 1:2 DEMUX through output quad channels AOUT and BOUT. The MUX and DEMUX channels contain a linear receive equalizer and an output linear driver.

The SN65LVCP114 provides both GPIO and I²C interfaces to control the configuration of the device. A detailed description of the SN65LVCP114 pin functions is provided in .

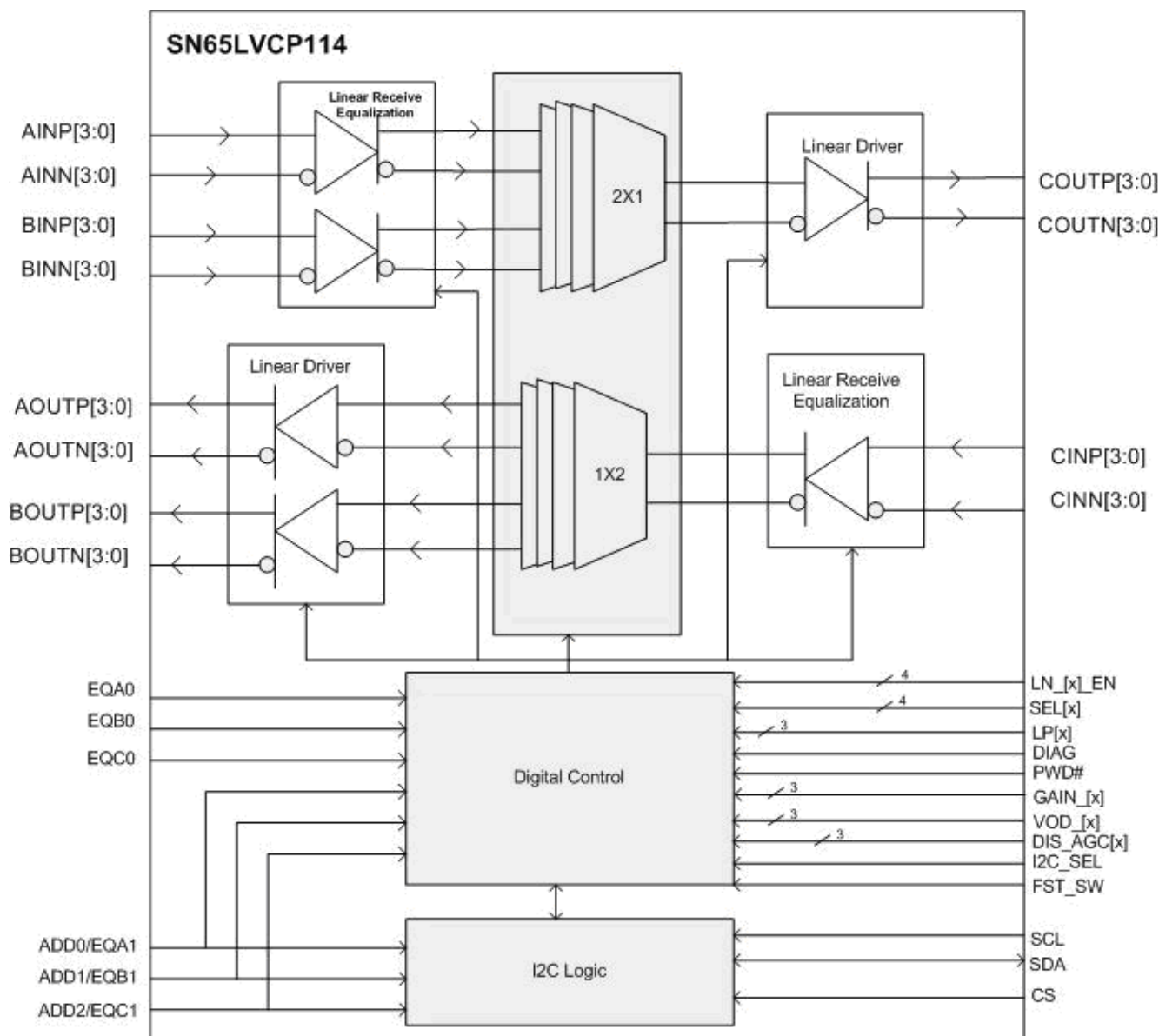


Figure 2. Simplified Block Diagram of SN65LVCP114

SN65LVCP114

SLLSEA8 – JANUARY 2012

www.ti.com

PACKAGE

The package for the SN65LVCP114 is a 12-mm × 12-mm × 1-mm, 167 pin PBGA with 0.8-mm pitch. The top view with the pin names is shown in [Figure 3](#).

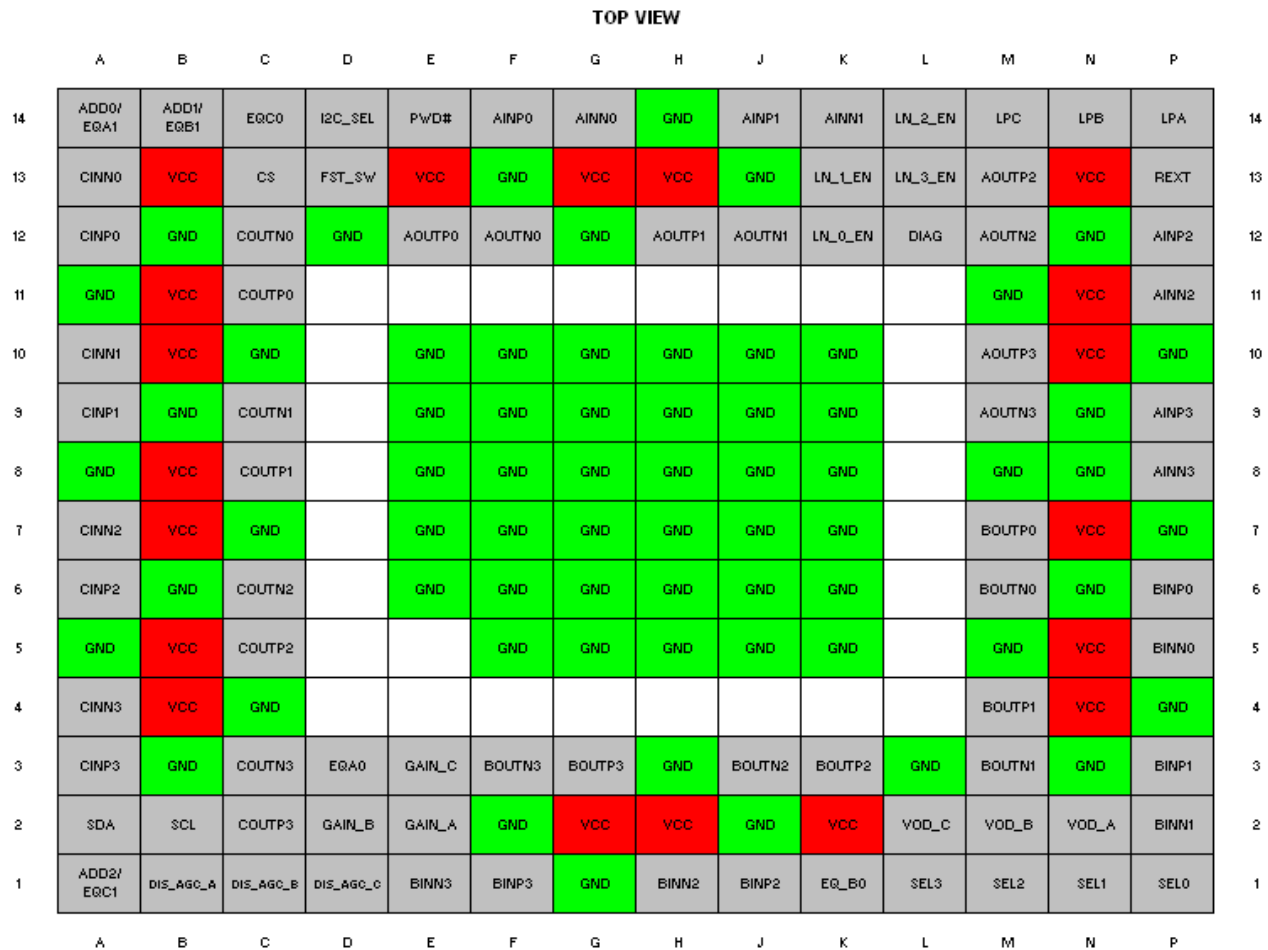


Figure 3. Package Pinout

PIN DESCRIPTIONS

PIN		DIRECTION TYPE SUPPLY	DESCRIPTION
SIGNAL	BALLS		
LINE-SIDE HIGH-SPEED I/O			
CINP0 CINN0	A12 A13	Input (with 50-Ω termination to input common mode)	Differential input, lane 0 line side.
CINP1 CINN1	A9 A10	Input (with 50-Ω termination to input common mode)	Differential input, lane 1 line side
CINP2 CINN2	A6 A7	Input (with 50-Ω termination to input common mode)	Differential input, lane 2 line side
CINP3 CINN3	A3 A4	Input (with 50-Ω termination to input common mode)	Differential input, lane 3 line side
COUTP0 COUTN0	C11 C12	Output	Differential output, lane 0 line side
COUTP1 COUTN1	C8 C9	Output	Differential output, lane 1 line side
COUTP2 COUTN2	C5 C6	Output	Differential output, lane 2 line side
COUTP3 COUTN3	C2 C3	Output	Differential output, lane 3 line side

PIN DESCRIPTIONS (continued)

PIN		DIRECTION TYPE SUPPLY	DESCRIPTION																															
SIGNAL	BALLS																																	
SWITCH-SIDE HIGH-SPEED I/O																																		
AINP0 AINN0	F14G14	Input (with 50-Ω termination to input common mode)	Differential input, lane 0, fabric switch_A_side																															
AINP1 AINN1	J14 K14	Input (with 50-Ω termination to input common mode)	Differential input, lane 1, fabric switch_A_side																															
AINP2 AINN2	P12 P11	Input (with 50-Ω termination to input common mode)	Differential input, lane 2, fabric switch_A_side																															
AINP3 AINN3	P9 P8	Input (with 50-Ω termination to input common mode)	Differential input, lane 3, fabric switch_A_side																															
BINP0 BINN0	P6 P5	Input (with 50-Ω termination to input common mode)	Differential input, lane 0, fabric switch_B_side																															
BINP1 BINN1	P3 P2	Input (with 50-Ω termination to input common mode)	Differential input, lane 1, fabric switch_B_side																															
BINP2 BINN2	J1 H1	Input (with 50-Ω termination to input common mode)	Differential input, lane 2, fabric switch_B_side																															
BINP3 BINN3	F1 E1	Input (with 50-Ω termination to input common mode)	Differential input, lane 3, fabric switch_B_side																															
AOUTP0 AOUTN0	E12 F12	Output	Differential output, lane 0, fabric switch_A_side																															
AOUTP1 AOUTN1	H12 J12	Output	Differential output, lane 1, fabric switch_A_side																															
AOUTP2 AOUTN2	M13 M12	Output	Differential output, lane 2, fabric switch_A_side																															
AOUTP3 AOUTN3	M10 M9	Output	Differential output, lane 3, fabric switch_A_side																															
BOUTP0 BOUTN0	M7 M6	Output	Differential output, lane 0, fabric switch_B_side																															
BOUTP1 BOUTN1	M4 M3	Output	Differential output, lane 1, fabric switch_B_side																															
BOUTP2 BOUTN2	K3 J3	Output	Differential output, lane 2, fabric switch_B_side																															
BOUTP3 BOUTN3	G3 F3	Output	Differential output, lane 3, fabric switch_B_side																															
CONTROL SIGNALS																																		
ADD0/EQA1 ADD1/EQB1 ADD2/EQC1	A14 B14 A1	Input, 2.5-V/3.3-V CMOS - 3-state	<div>GPIO mode</div> <div>EQ control pins. EQA1 and EQA0 pins are 3-state and control the EQ gain of port A.</div> <div>EQ control pins. EQB1 and EQB0 pins are 3-state and control the EQ gain of port B.</div> <div>EQ control pins. EQC1 and EQC0 pins are 3-state and control the EQ gain of port C.</div> <table><thead><tr><th>EQ[x]0</th><th>EQ[x]0</th><th>Peaking in dB</th></tr></thead><tbody><tr><td>0</td><td>0</td><td>1.3</td></tr><tr><td>0</td><td>HiZ</td><td>2</td></tr><tr><td>0</td><td>1</td><td>3.6</td></tr><tr><td>HiZ</td><td>0</td><td>5</td></tr><tr><td>HiZ</td><td>HiZ</td><td>6.5</td></tr><tr><td>HiZ</td><td>1</td><td>8.3</td></tr><tr><td>1</td><td>0</td><td>10</td></tr><tr><td>1</td><td>HiZ</td><td>11.9</td></tr><tr><td>1</td><td>1</td><td>13.9</td></tr></tbody></table>		EQ[x]0	EQ[x]0	Peaking in dB	0	0	1.3	0	HiZ	2	0	1	3.6	HiZ	0	5	HiZ	HiZ	6.5	HiZ	1	8.3	1	0	10	1	HiZ	11.9	1	1	13.9
EQ[x]0	EQ[x]0	Peaking in dB																																
0	0	1.3																																
0	HiZ	2																																
0	1	3.6																																
HiZ	0	5																																
HiZ	HiZ	6.5																																
HiZ	1	8.3																																
1	0	10																																
1	HiZ	11.9																																
1	1	13.9																																
			<div>I²C mode</div> <div>ADD0 along with pins ADD1 and ADD2 comprise the three bits of the I²C slave address.</div>																															

PIN DESCRIPTIONS (continued)

PIN		DIRECTION TYPE SUPPLY	DESCRIPTION																															
SIGNAL	BALLS																																	
EQA0 EQB0 EQC0	D3 K1 C14	Input, 2.5-V/3.3-V CMOS - 3-state	GPIO mode EQ control pins. EQA1 and EQA0 pins are 3-state and control theEQ gain of port A. EQ control pins. EQB1 and EQB0 pins are 3-state and control theEQ gain of port B. EQ control pins. EQC1 and EQC0 pins are 3-state and control theEQ gain of port C. <table><tr><th>EQ[x]0</th><th>EQ[x]0</th><th>Peaking in dB</th></tr><tr><td>0</td><td>0</td><td>1.3</td></tr><tr><td>0</td><td>HiZ</td><td>2</td></tr><tr><td>0</td><td>1</td><td>3.6</td></tr><tr><td>HiZ</td><td>0</td><td>5</td></tr><tr><td>HiZ</td><td>HiZ</td><td>6.5</td></tr><tr><td>HiZ</td><td>1</td><td>8.3</td></tr><tr><td>1</td><td>0</td><td>10</td></tr><tr><td>1</td><td>HiZ</td><td>11.9</td></tr><tr><td>1</td><td>1</td><td>13.9</td></tr></table>	EQ[x]0	EQ[x]0	Peaking in dB	0	0	1.3	0	HiZ	2	0	1	3.6	HiZ	0	5	HiZ	HiZ	6.5	HiZ	1	8.3	1	0	10	1	HiZ	11.9	1	1	13.9	I²C mode No action needed
EQ[x]0	EQ[x]0	Peaking in dB																																
0	0	1.3																																
0	HiZ	2																																
0	1	3.6																																
HiZ	0	5																																
HiZ	HiZ	6.5																																
HiZ	1	8.3																																
1	0	10																																
1	HiZ	11.9																																
1	1	13.9																																
LPA LPB LPC	P14 N14 M14	Input (with 48-kΩ pulldown) 2.5-V/3.3-V CMOS	GPIO mode LPx enables loopback for port x HIGH: Loopback enabled LOW: Loopback disabled See Table 2 and Figure 13 for device logic	I²C mode No action needed																														
SEL0 SEL1 SEL2 SEL3	P1 N1 M1 L1	Input (with 48-kΩ pulldown) 2.5-V/3.3-V CMOS	GPIO mode SELx, A/B switch control for lane x HIGH: port B is selected LOW: port A is selected See Table 2 and Figure 12 for device logic	I²C mode No action needed																														
REXT	P13	Input, analog	External bias resistor, 1,200 Ω to ground																															
CS	C13	Input (with 48-kΩ pulldown) 2.5-V/3.3-V CMOS	GPIO mode No action needed	I²C mode HIGH: acts as chip select LOW: disables I ² C interface																														
PWD	E14	Input (with 48-kΩ pullup) 2.5-V/3.3-V CMOS	LOW: Powers down the device, inputs off and outputs disabled, resets I ² C HIGH: Normal operation																															
DIAG	L12	Input (with 48-kΩ pulldown) 2.5-V/3.3-V CMOS	GPIO mode HIGH: Enables the same data on the line side (Port C) to be output on both fabric side ports (Port A and Port B). LOW: Normal operation See Table 2 and Figure 12 for device logic.	I²C mode No action needed																														
LN_0_EN LN_1_EN LN_2_EN LN_3_EN	K12 K13 L14 L13	Input (with 48-kΩ pullup) 2.5-V/3.3-V CMOS	GPIO mode LN_x_EN = High, enables lane x of ports A, B, and C LN_x_EN = Low, disables lane x of ports A, B, and C	I²C mode No action needed																														
DIS_AGC_A DIS_AGC_B DIS_AGC_C	B1 C1 D1	Input (with 48-kΩ pulldown) 2.5-V/3.3-V CMOS	GPIO mode Disables the AGC loop internal to the SN65LVCP114 DIS_AGC = High, disables the AGC loop DIS_AGC = Low, enables the AGC loop	I²C mode No action needed																														
VOD_A VOD_B VOD_C	N2 M2 L2	Input, 2.5-V/3.3-V CMOS - 3-state	GPIO mode HIGH: selects VOD output range: 1.2 V maximum and a gain of 2.2 LOW: selects VOD output range: 600 mV maximum and a gain of 1.1 If left floating, it defaults to 1.2 V maximum and a gain of 2.2.	I²C mode No action needed																														
Gain_A Gain_B Gain_C	E2 D2 E3	Input, 2.5-V/3.3-V CMOS - 3-state	GPIO mode HIGH: Receiver gain = 1 LOW: Receiver gain = 0.5 If left floating, it defaults to 0.5	I²C mode No action needed																														
SDA	A2	Input / output, open-drain output	GPIO mode No action needed	I²C mode I ² C data. Connect a 10-kΩ pullup resistor externally																														
SCL	B2	Input, open-drain input	GPIO mode No action needed	I²C mode I ² C clock. Connect a 10-kΩ pullup resistor externally																														

PIN DESCRIPTIONS (continued)

PIN		DIRECTION TYPE SUPPLY	DESCRIPTION	
SIGNAL	BALLS			
FST_SW	D13	Input (with 48-kΩ pullup) 2.5-V/3.3-V CMOS input	GPIO mode HIGH: Fast switching; the idle outputs are squelched (see tSM specification). LOW: Slow switching; the idle outputs are powered off (see tSM1 specification).	I²C mode No action needed
I2C_SEL	D14	Input (with 48-kΩ pulldown) 2.5-V/3.3-V CMOS input	Configures the device in I ² C or GPIO mode of operation HIGH: Enables I ² C mode LOW: Enables GPIO mode	
POWER SUPPLY				
VCC	B4, B5, B7, B8, B10, B11, B13, E13, G2, G13, H2, H13, K2,N4, N5, N7, N10, N11, N13	Power, 2.5 V ±5% / 3.3 V ±5%	Power supply pins	
GROUND				
GND	A5, A8, A11, B3, B6, B9, B12, C4, C7, C10,D12, F2, F13,G1, G12, G1, G12, H3, H14,J2, J13, L3, M5,M8, M11, N3, N6, N8, N9, N12, P4, P7, P10	Ground	Ground pins	
GND CenterPad	E6, E7 , E8, E9, E10, F5, F6, F7, F8, F9, F10, G5, G6, G7,G8, G9, G10, H5, H6, H7, H8, H9, H10, J5, J6, J7, J8, J9, J10, K5, K6, K7,K8, K9, K10	Ground	These pins must be connected to the GND plane.	

ABSOLUTE MAXIMUM RATINGS

over operating free-air temperature range (unless otherwise noted) ⁽¹⁾

			VALUE / UNIT
V _{CC}	Supply voltage range ⁽²⁾		–0.3 V to 4 V
V _{IN,DIFF}	Differential voltage between xINx_P and xINx_N		\pm 2.5 V
V _{IN+} , IN–	Voltage at xINx_P and xINx_N		–0.5 V to VCC + 0.5 V
V _{IO}	Voltage on control I/O pins		–0.3 V to VCC + 0.5 V
I _{IN+} , I _{IN–}	Continuous current at high-speed differential data inputs (differential)		–25 mA to 25 mA
I _{OUT+} , I _{OUT–}	Continuous current at high-speed differential data outputs		–25 mA to 25 mA
ESD	Human-body model ⁽³⁾	All pins	2 kV
	Charged-device model ⁽⁴⁾	All pins	500 V

- (1) Stresses beyond those listed under *Absolute Maximum Ratings* may cause permanent damage to the device. These are stress ratings only, and functional operation of the device at these or any other conditions beyond those indicated under *Recommended Operating Conditions* is not implied. Exposure to absolute-maximum-rated conditions for extended periods may affect device reliability.
- (2) All voltage values, except differential I/O bus voltages, are with respect to network ground terminal.
- (3) Tested in accordance with JEDEC Standard 22, Test Method A114-A.
- (4) Tested in accordance with JEDEC Standard 22, Test Method C101.

SN65LVCP114

SLLSEA8 –JANUARY 2012

www.ti.com

THERMAL INFORMATION

THERMAL METRIC ⁽¹⁾		SN65LVCP114	UNITS
		ZJA (167 PINS)	
θ_{JA}	Junction-to-ambient thermal resistance ⁽²⁾	38.8	°C/W
θ_{JCTop}	Junction-to-case (top) thermal resistance ⁽³⁾	7.55	
θ_{JB}	Junction-to-board thermal resistance ⁽⁴⁾	17.8	
ψ_{JT}	Junction-to-top characterization parameter ⁽⁵⁾	0.2	
ψ_{JB}	Junction-to-board characterization parameter ⁽⁶⁾	17.5	
θ_{JCbott}	Junction-to-case (bottom) thermal resistance ⁽⁷⁾	N/A	

- (1) For more information about traditional and new thermal metrics, see the *IC Package Thermal Metrics* application report, [SPRA953](#).
- (2) The junction-to-ambient thermal resistance under natural convection is obtained in a simulation on a JEDEC-standard, high-K board, as specified in JESD51-7, in an environment described in JESD51-2a.
- (3) The junction-to-case (top) thermal resistance is obtained by simulating a cold plate test on the package top. No specific JEDEC-standard test exists, but a close description can be found in the ANSI SEMI standard G30-88.
- (4) The junction-to-board thermal resistance is obtained by simulating in an environment with a ring cold plate fixture to control the PCB temperature, as described in JESD51-8.
- (5) The junction-to-top characterization parameter, ψ_{JT} , estimates the junction temperature of a device in a real system and is extracted from the simulation data for obtaining θ_{JA} , using a procedure described in JESD51-2a (sections 6 and 7).
- (6) The junction-to-board characterization parameter, ψ_{JB} , estimates the junction temperature of a device in a real system and is extracted from the simulation data for obtaining θ_{JA} , using a procedure described in JESD51-2a (sections 6 and 7).
- (7) The junction-to-case (bottom) thermal resistance is obtained by simulating a cold plate test on the exposed (power) pad. No specific JEDEC standard test exists, but a close description can be found in the ANSI SEMI standard G30-88.

RECOMMENDED OPERATING CONDITIONS

SPECIFICATION	MIN	NOM	MAX	UNIT
Operating data rate, dR			14.2	Gbps
Supply voltage, V_{CC} , 2.5-V nominal supply	2.375	2.5	2.625	V
Supply voltage, V_{CC} , 3.3-V nominal supply	3.135	3.3	3.465	V
PSNR BG, bandgap circuitry PSNR, 10 Hz–10 GHz	20			dB
CONTROL INPUTS				
V_{IH} High-level input voltage	0.8 × V_{CC}			
V_{IM} Mid-level input voltage	$V_{CC}/2 - 0.3$	$V_{CC}/2 + 0.3$		V
V_{IL} Low-level input voltage		0.2 × V_{CC}		V
T_C Junction temperature ⁽¹⁾	–10		125	°C
Maximum Board Temperature ⁽¹⁾			See Table 1	°C

- (1) Use of θ_{JB} and ψ_{JB} are recommended for thermal calculations. For more information about traditional and new thermal metrics, see *IC Package Thermal Metrics* application report, [SPRA953](#).

ELECTRICAL CHARACTERISTICS ($V_{CC} 2.5 V \pm 5\%$)

over operating conditions range. All parameters are referenced to package pins (unless otherwise noted).

PARAMETER		TEST CONDITIONS	MIN	TYP	MAX	UNIT
POWER CONSUMPTION						
PD_L	Device power dissipation, loopback mode	Ports A, B, and C in loopback mode with all 12 channels active. VOD = LOW	1800	2300		mW
PD_N	Device power dissipation, normal mode	Device configured in mux-demux mode with 8 channels active. VOD = LOW	1400	1800		mW
PD_{OFF}	Device power dissipation, lanes disabled	All 4 lanes disabled. See the I ² C section for device configuration.	50			mW
PD_{STB}	Device power dissipation, standby	All 12 channels active, VOD = LOW, FAST_SW = HIGH. See the I ² C section for device configuration.	1800	2300		mW

ELECTRICAL CHARACTERISTICS ($V_{CC} 3.3 V \pm 5\%$)

over operating conditions range. All parameters are referenced to package pins (unless otherwise noted).

PARAMETER		TEST CONDITIONS	MIN	TYP	MAX	UNIT
POWER CONSUMPTION						
PD_L	Device power dissipation, loopback mode	Ports A, B, and C in loopback mode with all 12 channels active. VOD = LOW	2500	3150		mW
PD_N	Device power dissipation, normal mode	Device configured in mux-demux mode with 8 channels active. VOD = LOW	1800	2500		mW
PD_{OFF}	Device power dissipation, lanes disabled	All 4 lanes disabled. See the I ² C section for device configuration.	50			mW
PD_{STB}	Device power dissipation, standby	All 12 channels active, VOD = LOW, FAST_SW = HIGH. See I ² C section for device configuration.	2500	3150		mW

ELECTRICAL CHARACTERISTICS ($V_{CC} 3.3 V \pm 5\%$, $2.5 V \pm 5\%$)

over operating conditions range. All parameters are referenced to package pins (unless otherwise noted).

PARAMETER		TEST CONDITIONS	MIN	TYP ⁽¹⁾	MAX	UNIT
CMOS DC SPECIFICATIONS						
I_{IH}	High-level input current	$V_{IN} = 0.9 \times V_{CC}$			80	μA
I_{IL}	Low-level input current	$V_{IN} = 0.1 \times V_{CC}$	-80			μA
CML INPUTS (A1NP[3:0], A1NN[3:0], B1NP[3:0], B1NN[3:0], C1NP[3:0], C1NN[3:0])						
r_{IN}	Differential input resistance	INx_P to INx_N		100		Ω
V_{INPP}	Input linear dynamic range	Gain = 0.5		1200		mVpp
V_{ICM}	Common-mode input voltage	Internally biased		$V_{CC} - 0.3$		V
SCD11	Input differential to common-mode conversion	100 MHz to 7.1GHz		-25		dB
SDD11	Differential input return loss	100 MHz to 7.1GHz		-10		dB
CML OUTPUTS (A0UTP[3:0], A0UTN[3:0], B0UTP[3:0], B0UTN[3:0], C0UTP[3:0], C0UTN[3:0])						
V_{OD}	Output linear dynamic range	$R_L = 100 \Omega$, $V_{OD} = \text{High}$		1200		mVpp
		$R_L = 100 \Omega$, $V_{OD} = \text{Low}$		600		
V_{OS}	Output offset voltage	$R_L = 100 \Omega$, 0 V applied at inputs			20	mVpp
$V_{CM,RIP}$	Common-mode output ripple	K28.5 pattern at 14.2 Gbps, no interconnect loss, $V_{OD} = \text{HIGH}$		10	20	mVRMS
$V_{OD,RIP}$	Differential path output ripple	K28.5 pattern at 14.2Gbps, no interconnect loss, $V_{IN} = 1200 \text{ mVpp}$. Outputs squelched.			20	mVpp
V_{OCM}	Output common mode voltage	See Figure 4		$V_{CC} - 0.35$		V
$V_{OC(SS)}$	Change in steady-state common-mode output voltage between logic states			± 10		mV
t_{PLH}	Low-to-high propagation delay	See Figure 5		200		ps
t_{PHL}	High-to-low propagation delay			200		ps
$t_{SK(O)}$	Inter-pair output skew ⁽²⁾	All outputs terminated with 100 Ω . See Figure 7		50		ps

(1) All typical values are at 25°C and with 2.5-V and 3.3-V supply, unless otherwise noted.

(2) $t_{SK(O)}$ is the magnitude of the time difference between the channels within a Port. For more information, see SN65LVCP114 Guidelines for Skew Compensation, [SLLA323](#).

SN65LVCP114

SLLSEA8 – JANUARY 2012

www.ti.com

ELECTRICAL CHARACTERISTICS (V_{CC} 3.3 V ±5%, 2.5 V ±5%) (continued)

over operating conditions range. All parameters are referenced to package pins (unless otherwise noted).

PARAMETER		TEST CONDITIONS	MIN	TYP ⁽¹⁾	MAX	UNIT
t _{SK(PP)}	Part-to-part skew ⁽³⁾				100	ps
t _R	Rise time	Input signal with 30ps rise time, 20% to 80%. See Figure 6		31		ps
t _F	Fall time	Input signal with 30ps fall time, 20% to 80%. See Figure 6		31		ps
SDD22	Differential output return loss	100 MHz to 7.1GHz		–10		dB
SCC22	Common-mode output return loss	100 MHz to 7.1GHz		–5		dB
t _{SM}	Multiplexer switch time	Mux to valid output (idle outputs are squelched)		100		ns
t _{SM1}		Mux to valid output (idle outputs are turned off)		10		μs
Ch _{iso}	Channel-to-channel isolation ⁽⁴⁾	Frequency at 5.1625 GHz		52.2		dB
		Frequency at 7.1GHz		43.5		
OUT _{NOISE}	Output referred noise	10 MHz to 7.1 GHz. No other noise source present. V _{OD} = LOW			1500	μV _{RMS}
		10 MHz to 7.1 GHz. No other noise source present. V _{OD} = HIGH			3000	
V _{pre}	Output pre-cursor pre-emphasis	Input signal with 3.75 pre-cursor and measured on the output signal. See Figure 8 . V _{pre} = 20 log(V ₃ /V ₂)		5		dB
V _{pst}	Output post-cursor pre-emphasis	Input signal with 12 dB post-cursor and measure it on the output signal. See Figure 8 . V _{pst} = 20 log(V ₁ /V ₂)		14		dB
r _{OT}	Single-ended output resistance	Single-ended on-chip terminations to VCC, outputs are ac-coupled		50		Ω
r _{OM}	Output termination mismatch at 1 MHz	$\Delta_{rom} = 2 \times \frac{r_p - r_n}{r_p + r_n} \times 100$			5	%
EQUALIZATION						
EQ _{Gain}	At 7.1 GHz input signal	Equalization gain, EQ = MAX	10	15		dB
DJ1	TX residual deterministic jitter at 10.3125 Gbps	Tx launch amplitude = 0.6Vpp, EQ=1.3dB, VOD and GAIN are High. Test Channel = 0". See Figure 10 .		0.08		Ulp-p
DJ2	TX residual deterministic jitter at 14.2 Gbps	Tx launch Amplitude = 0.6 Vpp, EQ=1.3dB, VOD and GAIN are High. Test Channel = 0". See Figure 10 .		0.06		Ulp-p
DJ3	RX residual deterministic jitter at 10.3125 Gbps	Tx Launch Amplitude = 0.6 Vpp, test channel = 12" (9dB loss at 5GHz), EQ=13.9dB, VOD and GAIN are High. See Figure 9 .		0.04		Ulp-p
DJ4	RX residual deterministic Jitter at 14.2 Gbps	Tx Launch Amplitude = 0.6 Vpp, test channel = 8" (9dB loss at 7GHz), EQ=13.9dB, VOD=LOW and GAIN=HIGH. See Figure 9 .		0.08		Ulp-p

- (3) t_{SK(PP)} is the magnitude of the difference in propagation delay times between any specified terminals of two devices when both devices operate with the same supply voltages, at the same temperature, and have identical packages and test circuits.
- (4) All noise sources added.

Table 1. RECOMMENDED MAXIMUM BOARD TEMPERATURE

LOOP_A	LOOP_B	LOOP_C	DIAG	Maximum Board Temperature ⁽¹⁾			
				V _{CC} = 2.5V		V _{CC} = 3.3V	
				V _{OD} = LOW	V _{OD} = HIGH	V _{OD} = LOW	V _{OD} = HIGH
LOW	LOW	LOW	LOW	85°C	85°C	85°C	75°C
LOW	LOW	LOW	HIGH	85°C	85°C	75°C	System Specific ⁽²⁾
LOW	LOW	HIGH	LOW	85°C	85°C	85°C	75°C
LOW	LOW	HIGH	HIGH	85°C	85°C	85°C	75°C
LOW	HIGH	LOW	LOW	85°C	85°C	75°C	System Specific ⁽²⁾
LOW	HIGH	LOW	HIGH	85°C	85°C	75°C	System Specific ⁽²⁾
LOW	HIGH	HIGH	LOW	85°C	85°C	75°C	System Specific ⁽²⁾
LOW	HIGH	HIGH	HIGH	85°C	85°C	75°C	System Specific ⁽²⁾
HIGH	LOW	LOW	LOW	85°C	85°C	85°C	75°C
HIGH	LOW	LOW	HIGH	85°C	85°C	75°C	System Specific ⁽²⁾
HIGH	LOW	HIGH	LOW	85°C	85°C	85°C	75°C
HIGH	LOW	HIGH	HIGH	85°C	85°C	75°C	System Specific ⁽²⁾
HIGH	HIGH	LOW	LOW	85°C	85°C	75°C	System Specific ⁽²⁾
HIGH	HIGH	LOW	HIGH	85°C	85°C	75°C	System Specific ⁽²⁾
HIGH	HIGH	HIGH	LOW	85°C	85°C	75°C	System Specific ⁽²⁾
HIGH	HIGH	HIGH	HIGH	85°C	85°C	75°C	System Specific ⁽²⁾

(1) Maximum board temperature is allowed as long as the device maximum junction temperature is not exceeded.

(2) Texas Instruments recommends a system thermal and device use case power analysis to decide possible use of a heat sink.

PARAMETER MEASUREMENT INFORMATION

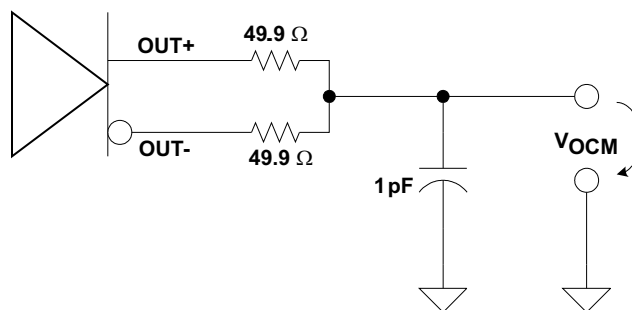


Figure 4. Common-Mode Output-Voltage Test Circuit

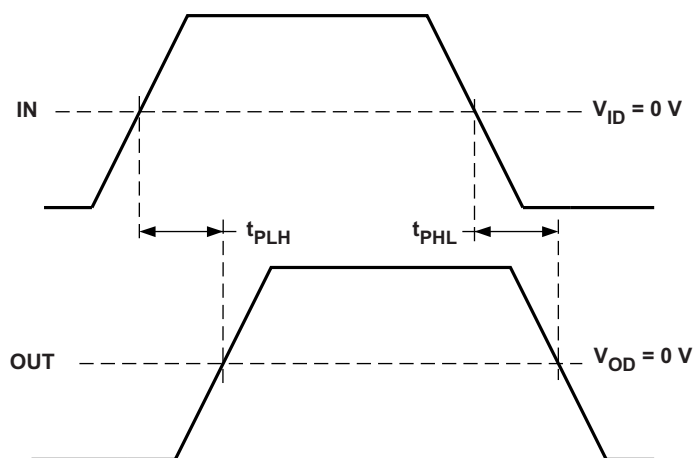


Figure 5. Propagation Delay, Input to Output

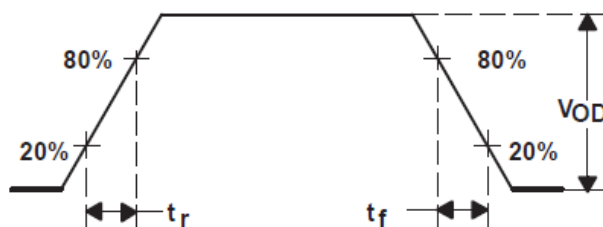


Figure 6. Output Rise and Fall Times

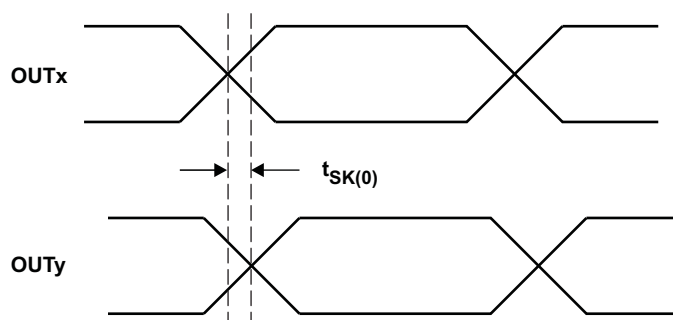


Figure 7. Output Inter-Pair Skew

PARAMETER MEASUREMENT INFORMATION (continued)

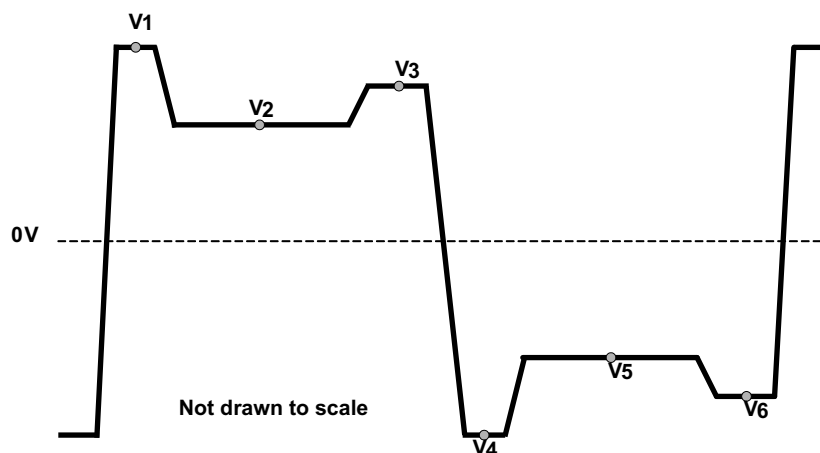


Figure 8. Vpre and Vpost [The Test Pattern is 1111111100000000 (Eight 1s, Eight 0s)]

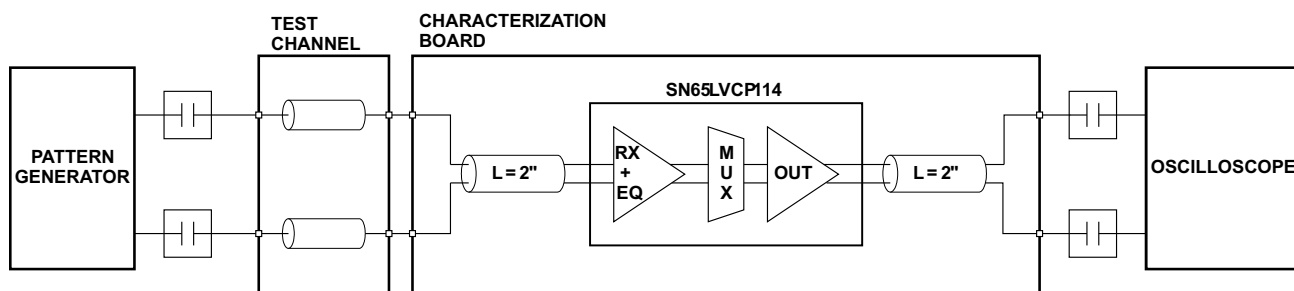


Figure 9. Receive-Side Performance Test Circuit

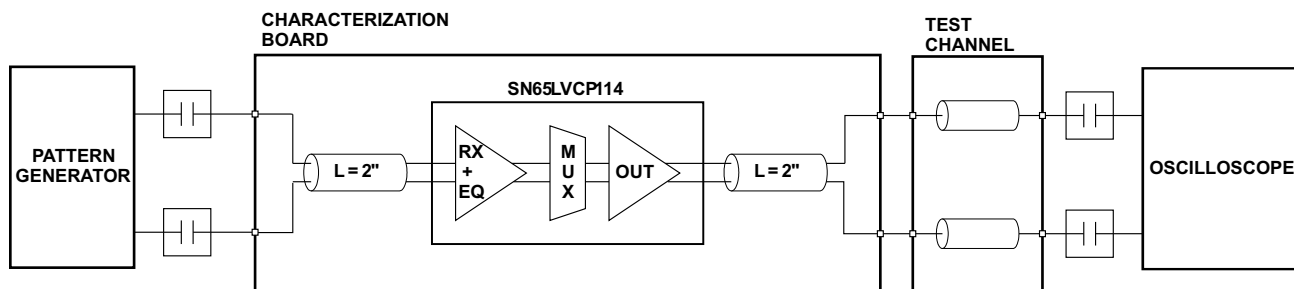


Figure 10. Transmit-Side Performance Test Circuit

PARAMETER MEASUREMENT INFORMATION (continued)

EQUIVALENT INPUT AND OUTPUT SCHEMATIC DIAGRAMS

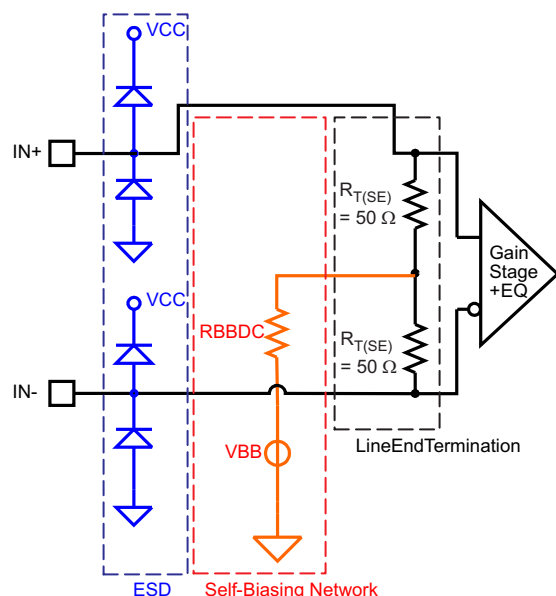


Figure 11. Equivalent Input Circuit Design

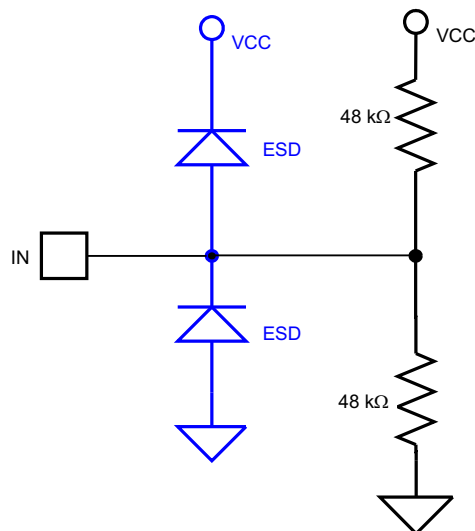


Figure 12. 3-Level Input Biasing Network

FUNCTIONAL DEFINITIONS

Table 2. Loopback, DIAG, and SEL Controls

Loop_A	Loop_B	Loop_C	DIAG	SEL[3:0]	Output Port A	Output Port B	Output Port C
0	0	0	0	0	In_Port_C[3:0]	idle	In_Port_A[3:0]
0	0	0	0	1	idle	In_Port_C[3:0]	In_Port_B[3:0]
0	0	0	1	0	In_Port_C[3:0]	In_Port_C[3:0]	In_Port_A[3:0]
0	0	0	1	1	In_Port_C[3:0]	In_Port_C[3:0]	In_Port_B[3:0]
0	0	1	0	0	In_Port_C[3:0]	Idle	In_Port_C[3:0]
0	0	1	0	1	Idle	In_Port_C[3:0]	In_Port_C[3:0]
0	0	1	1	0	In_Port_C[3:0]	In_Port_C[3:0]	In_Port_C[3:0]
0	0	1	1	1	In_Port_C[3:0]	In_Port_C[3:0]	In_Port_C[3:0]
0	1	0	0	0	In_Port_C[3:0]	In_Port_B[3:0]	In_Port_A[3:0]
0	1	0	0	1	Idle	In_Port_B[3:0]	In_Port_B[3:0]
0	1	0	1	0	In_Port_C[3:0]	In_Port_B[3:0]	In_Port_A[3:0]
0	1	0	1	1	In_Port_C[3:0]	In_Port_B[3:0]	In_Port_B[3:0]
0	1	1	0	0	In_Port_C[3:0]	In_Port_B[3:0]	In_Port_C[3:0]
0	1	1	0	1	Idle	In_Port_B[3:0]	In_Port_C[3:0]
0	1	1	1	0	In_Port_C[3:0]	In_Port_B[3:0]	In_Port_C[3:0]
0	1	1	1	1	In_Port_C[3:0]	In_Port_B[3:0]	In_Port_C[3:0]
1	0	0	0	0	In_Port_A[3:0]	Idle	In_Port_A[3:0]
1	0	0	0	1	In_Port_A[3:0]	In_Port_C[3:0]	In_Port_B[3:0]
1	0	0	1	0	In_Port_A[3:0]	In_Port_C[3:0]	In_Port_A[3:0]
1	0	0	1	1	In_Port_A[3:0]	In_Port_C[3:0]	In_Port_B[3:0]
1	0	1	0	0	In_Port_A[3:0]	Idle	In_Port_C[3:0]
1	0	1	0	1	In_Port_A[3:0]	In_Port_C[3:0]	In_Port_C[3:0]
1	0	1	1	0	In_Port_A[3:0]	In_Port_C[3:0]	In_Port_C[3:0]
1	0	1	1	1	In_Port_A[3:0]	In_Port_C[3:0]	In_Port_C[3:0]

PARAMETER MEASUREMENT INFORMATION (continued)

Table 2. Loopback, DIAG, and SEL Controls (continued)

Loop_A	Loop_B	Loop_C	DIAG	SEL[3:0]	Output Port A	Output Port B	Output Port C
1	1	0	0	0	In_Port_A[3:0]	In_Port_B[3:0]	In_Port_A[3:0]
1	1	0	0	1	In_Port_A[3:0]	In_Port_B[3:0]	In_Port_B[3:0]
1	1	0	1	0	In_Port_A[3:0]	In_Port_B[3:0]	In_Port_A[3:0]
1	1	0	1	1	In_Port_A[3:0]	In_Port_B[3:0]	In_Port_B[3:0]
1	1	1	0	0	In_Port_A[3:0]	In_Port_B[3:0]	In_Port_C[3:0]

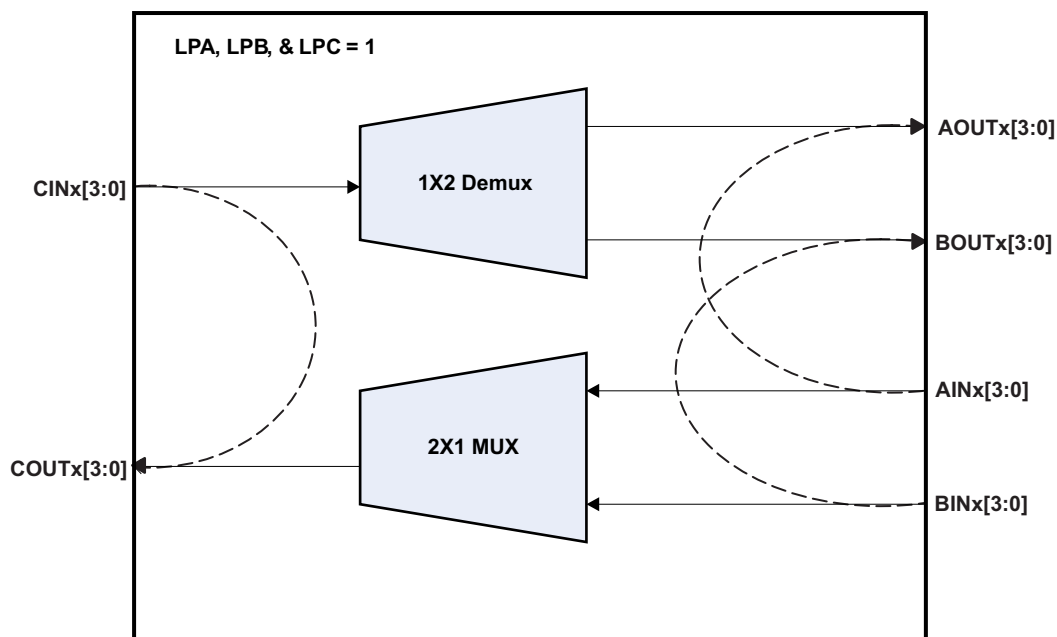


Figure 13. Loopback Mode

SN65LVCP114

SLLSEA8 –JANUARY 2012

www.ti.com

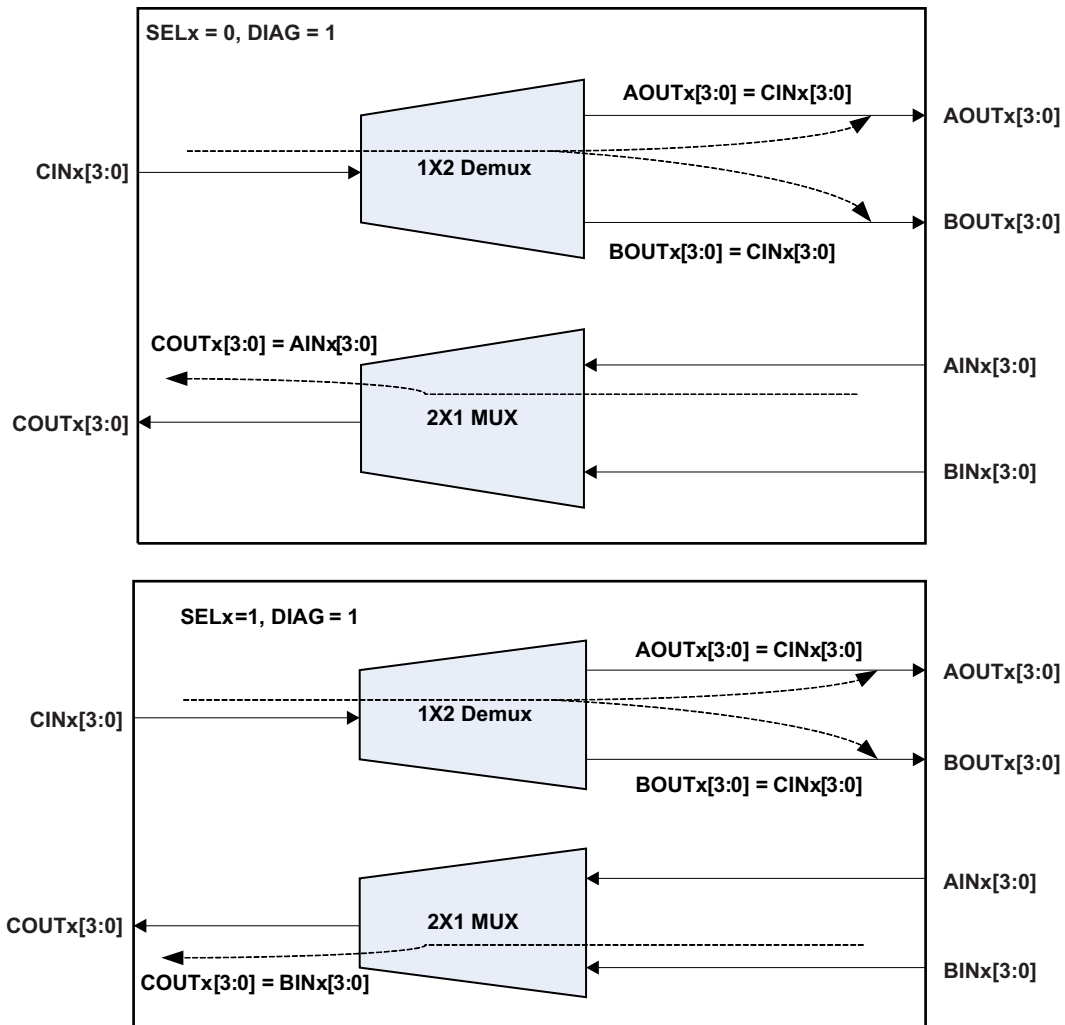


Figure 14. Diagnostic Mode

Table 3. Overall Gain Settings

Gain_x	Input Gain [dB]	VOD_x	VOD Gain [dB]	EQ[x]0	EQ[x]1	Total DC gain [dB]	Total EQ gain (7 GHz) [dB]
LOW	–6	LOW	1	LOW	LOW	–5	1.3
LOW	–6	LOW	1	LOW	HiZ	–5	2
LOW	–6	LOW	1	LOW	HIGH	–5	3.6
LOW	–6	LOW	1	HiZ	LOW	–8	5
LOW	–6	LOW	1	HiZ	HiZ	–8	6.5
LOW	–6	LOW	1	HiZ	HIGH	–8	8.3
LOW	–6	LOW	1	HIGH	LOW	–11	10
LOW	–6	LOW	1	HIGH	HiZ	–11	11.9
LOW	–6	LOW	1	HIGH	HIGH	–11	13.9
LOW	–6	HIGH	6.8	LOW	LOW	0.8	1.3
LOW	–6	HIGH	6.8	LOW	HiZ	0.8	2
LOW	–6	HIGH	6.8	LOW	HIGH	0.8	3.6
LOW	–6	HIGH	6.8	HiZ	LOW	–2.2	5
LOW	–6	HIGH	6.8	HiZ	HiZ	–2.2	6.5
LOW	–6	HIGH	6.8	HiZ	HIGH	–2.2	8.3
LOW	–6	HIGH	6.8	HIGH	LOW	–5.2	10
LOW	–6	HIGH	6.8	HIGH	HiZ	–5.2	11.9
LOW	–6	HIGH	6.8	HIGH	HIGH	–5.2	13.9
HIGH	0	LOW	1	LOW	LOW	1	1.3
HIGH	0	LOW	1	LOW	HiZ	1	2
HIGH	0	LOW	1	LOW	HIGH	1	3.6
HIGH	0	LOW	1	HiZ	LOW	–2	5
HIGH	0	LOW	1	HiZ	HiZ	–2	6.5
HIGH	0	LOW	1	HiZ	HIGH	–2	8.3
HIGH	0	LOW	1	HIGH	LOW	–5	10
HIGH	0	LOW	1	HIGH	HiZ	–5	11.9
HIGH	0	LOW	1	HIGH	HIGH	–5	13.9
HIGH	0	HIGH	6.8	LOW	LOW	6.8	1.3
HIGH	0	HIGH	6.8	LOW	HiZ	6.8	2
HIGH	0	HIGH	6.8	LOW	HIGH	6.8	3.6
HIGH	0	HIGH	6.8	HiZ	LOW	3.8	5
HIGH	0	HIGH	6.8	HiZ	HiZ	3.8	6.5
HIGH	0	HIGH	6.8	HiZ	HIGH	3.8	8.3
HIGH	0	HIGH	6.8	HIGH	LOW	0.8	10
HIGH	0	HIGH	6.8	HIGH	HiZ	0.8	11.9
HIGH	0	HIGH	6.8	HIGH	HIGH	0.8	13.9

TYPICAL CHARACTERISTICS

Typical operating condition is at $V_{CC} = 2.5\text{ V}$ and $T_A = 25^\circ\text{C}$, no interconnect line at the output, and with default device settings (unless otherwise noted).

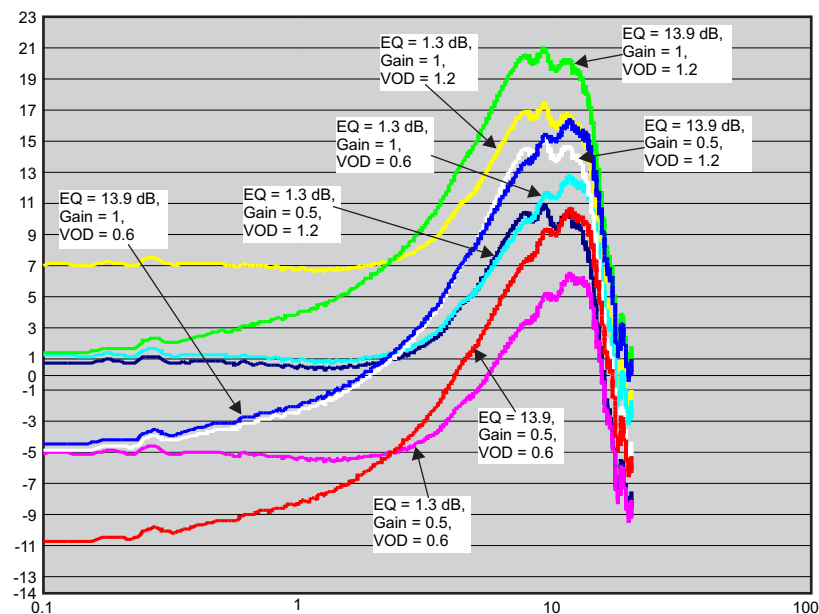


Figure 15. Typical EQ Gain Profile Curve

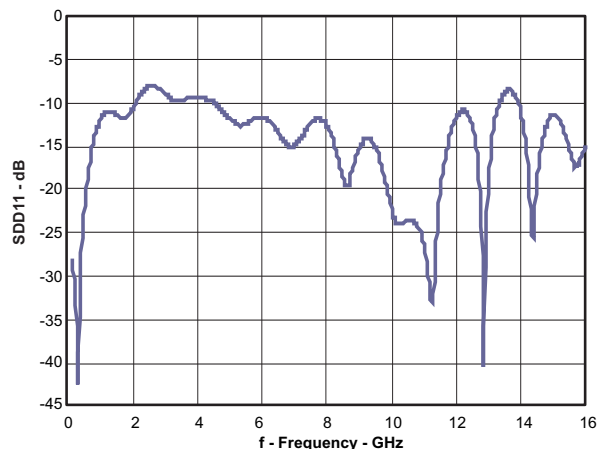


Figure 16. Differential Input Return Loss

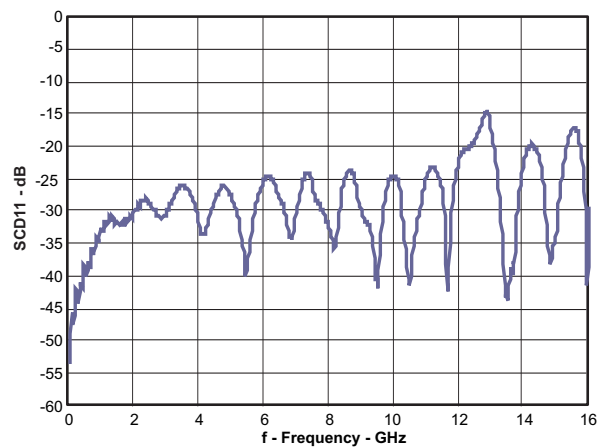


Figure 17. Differential to Common-Mode Conversion

TYPICAL CHARACTERISTICS (continued)

Typical operating condition is at $V_{CC} = 2.5\text{ V}$ and $T_A = 25^\circ\text{C}$, no interconnect line at the output, and with default device settings (unless otherwise noted).

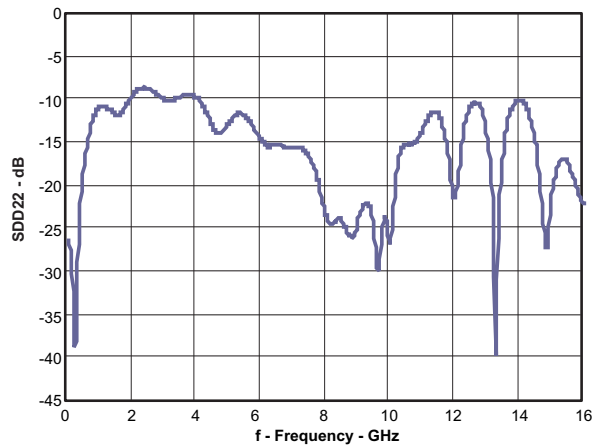


Figure 18. Differential Output Return Loss

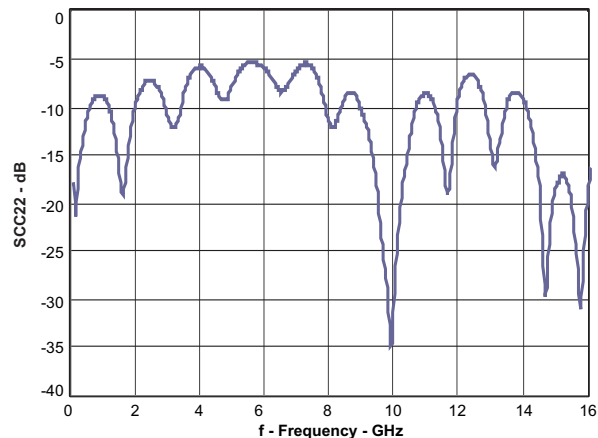


Figure 19. Common-Mode Output Return Loss

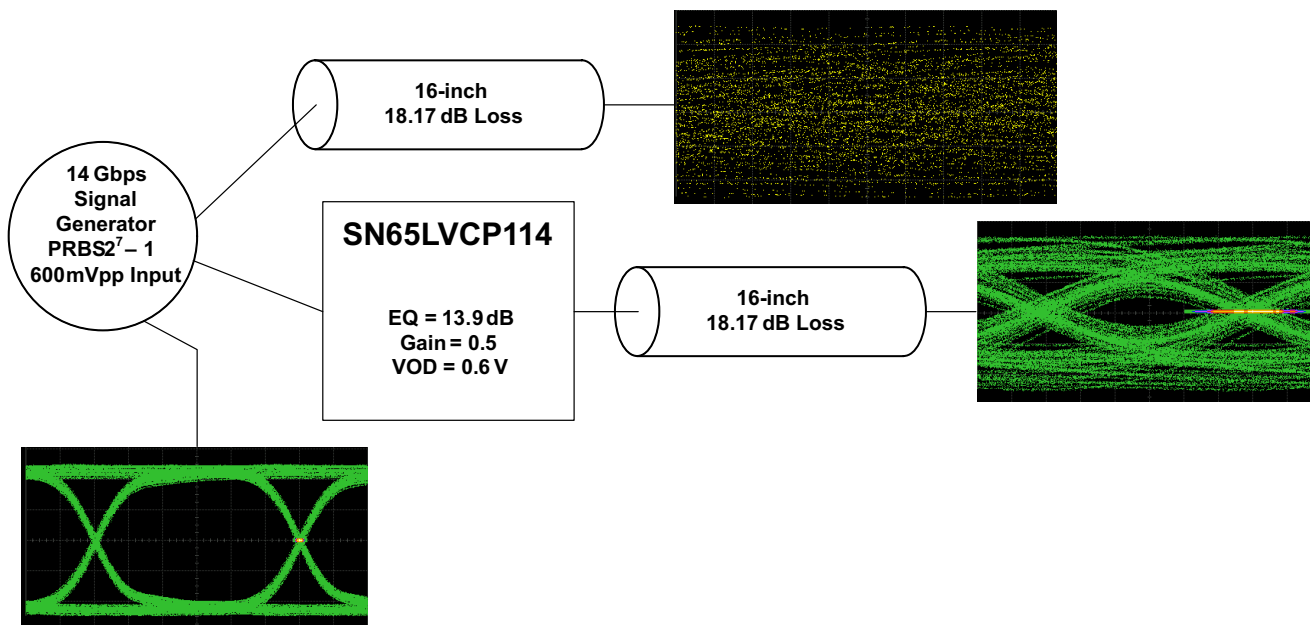


Figure 20. Transmit-Side Typical Application

SN65LVCP114

SLLSEA8 –JANUARY 2012

www.ti.com

TYPICAL CHARACTERISTICS (continued)

Typical operating condition is at $V_{CC} = 2.5\text{ V}$ and $T_A = 25^\circ\text{C}$, no interconnect line at the output, and with default device settings (unless otherwise noted).

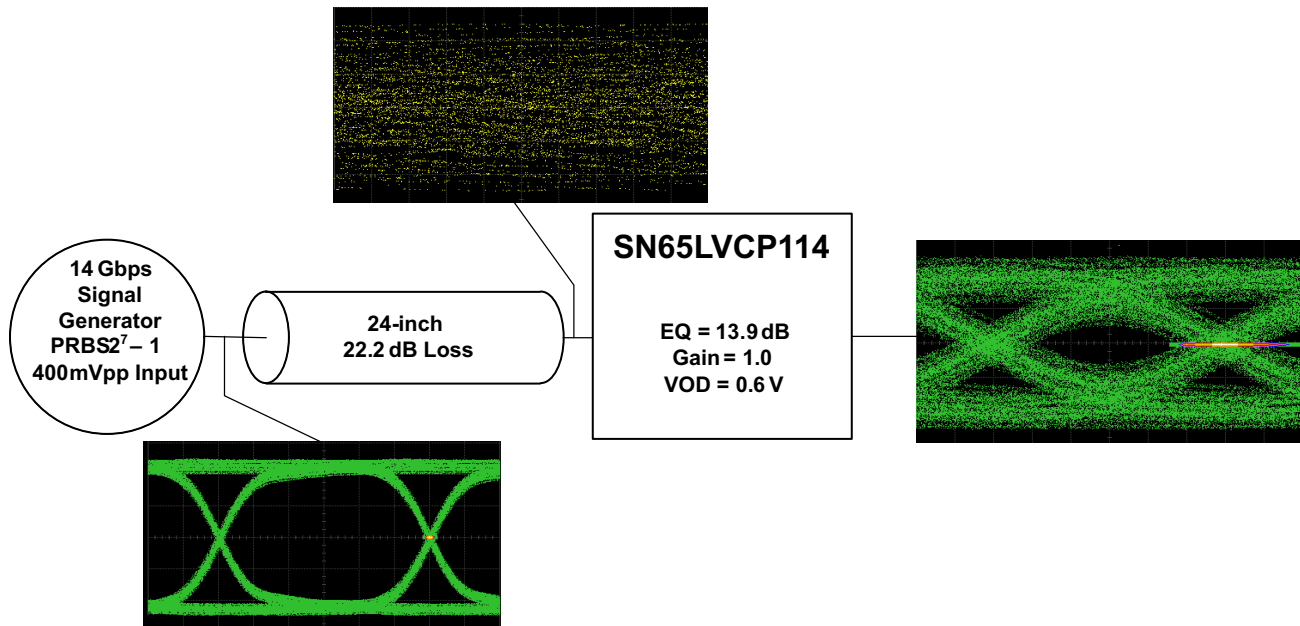


Figure 21. Receive-Side Typical Application

APPLICATION INFORMATION

TWO-WIRE SERIAL INTERFACE AND CONTROL LOGIC

The SN65LVCP114 uses a 2-wire serial interface for digital control. The two circuit inputs, SDA and SCL, are driven, respectively, by the serial data and serial clock from a microprocessor, for example. The SDA and SCL pins require external 10-k Ω pullups to V_{CC} .

The 2-wire interface allows write access to the internal memory map to modify control registers and read access to read out the control signals. The SN65LVCP114 is a slave device only, which means that it cannot initiate a transmission itself; it always relies on the availability of the SCL signal for the duration of the transmission. The master device provides the clock signal as well as the START and STOP commands. The protocol for a data transmission is as follows:

1. START command
2. 7-bit slave address (0000ADD[2:0]) followed by an 8th bit which is the data direction bit (R/W). A zero indicates a WRITE and a 1 indicates a READ. The ADD[2:0] address bits change with the status of the ADD2, ADD1, and ADD0 device pins, respectively. If the pins are left floating or pulled down, the 7-bit slave address is 0000000.
3. 8-bit register address
4. 8-bit register data word
5. STOP command

Regarding timing, the SN65LVCP114 is I^2C compatible. The typical timing is shown in Figure 22, and a complete data transfer is shown in Figure 23. Parameters for Figure 22 are defined in Table 4.

Bus Idle: Both SDA and SCL lines remain HIGH

Start data transfer: A change in the state of the SDA line, from HIGH to LOW, while the SCL line is HIGH, defines a START condition (S). Each data transfer is initiated with a START condition.

Stop Data Transfer: A change in the state of the SDA line from LOW to HIGH while the SCL line is HIGH defines a STOP condition (P). Each data transfer is terminated with a STOP condition; however, if the master still must communicate on the bus, it can generate a repeated START condition and address another slave without first generating a STOP condition.

Data Transfer: The number of data bytes transferred between a START and a STOP condition is not limited and is determined by the master device. The receiver acknowledges the transfer of data.

Acknowledge: Each receiving device, when addressed, is obliged to generate an acknowledge bit. The transmitter releases the SDA line, and a device that acknowledges must pull down the SDA line during the acknowledge clock pulse in such a way that the SDA line is stable LOW during the HIGH period of the acknowledge clock pulse. Setup and hold times must be taken into account. When a slave-receiver does not acknowledge the slave address, the data line must be left HIGH by the slave. The master can then generate a STOP condition to abort the transfer. If the slave-receiver does acknowledge the slave address but some time later in the transfer cannot receive any more data bytes, the master must abort the transfer. This is indicated by the slave generating the not acknowledge on the first byte to follow. The slave leaves the data line HIGH and the master generates the STOP condition.

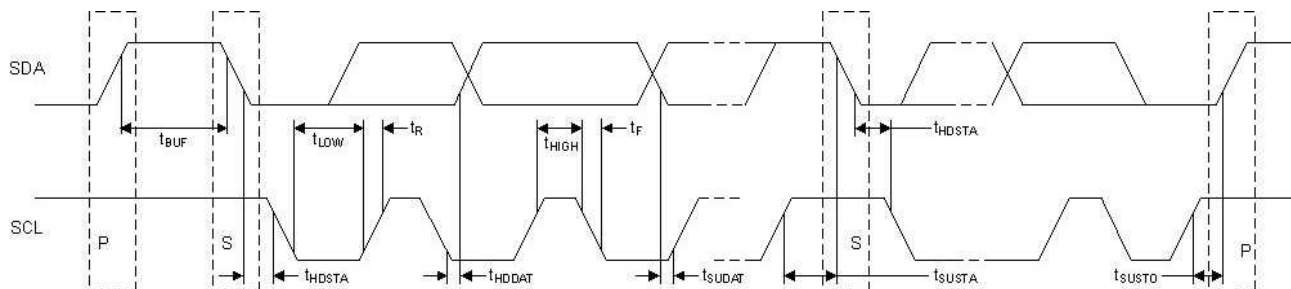


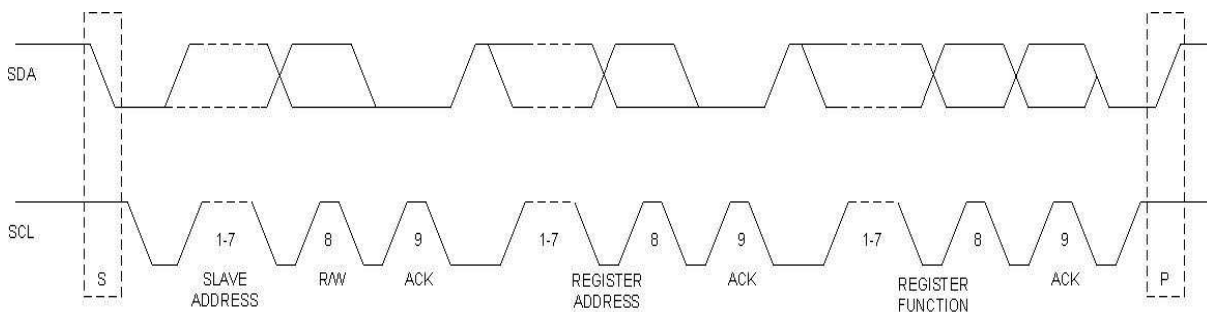
Figure 22. Two-Wire Serial Interface Timing Diagram

SN65LVCP114

SLLSEA8 –JANUARY 2012

www.ti.com
Table 4. Two-Wire Serial Interface Timing Diagram Definitions

SYMBOL	PARAMETER	MIN	MAX	UNIT
f_{SCL}	SCL clock frequency		400	kHz
t_{BUF}	Bus free time between START and STOP conditions	1.3		μ s
t_{HDSTA}	Hold time after repeated START condition. After this period, the first clock pulse is generated.	0.6		μ s
t_{LOW}	Low period of the SCL clock	1.3		μ s
t_{HIGH}	High period of the SCL clock	0.6		μ s
t_{SUSTA}	Setup time for a repeated START condition	0.6		μ s
t_{HDDAT}	Data hold time	0		μ s
t_{SUDAT}	Data setup time	100		ns
t_R	Rise time of both SDA and SCL signals		300	ns
t_F	Fall time of both SDA and SCL signals		300	ns
t_{SUSTO}	Setup time for STOP condition	0.6		μ s


Figure 23. Two-wire Serial Interface Data Transfer

SN65LVCP114 Register Mapping Information

Register 0x00 (General Device Settings) R/W							
Bit 7	Bit 6	Bit 5	Bit 4	Bit 3	Bit 2	Bit 1	Bit 0
SW_GPIO	PWRDOWN						RSVD

Register 0x01 (Device Control Settings) R/W							
Bit 7	Bit 6	Bit 5	Bit 4	Bit 3	Bit 2	Bit 1	Bit 0
DIAG	LOOP[C]	LOOP[B]	LOOP[A]	SEL[3]	SEL[2]	SEL[1]	SEL[0]

Register 0x02 (Port A Control Settings) R/W							
Bit 7	Bit 6	Bit 5	Bit 4	Bit 3	Bit 2	Bit 1	Bit 0
OUT_DIS_0	OUT_DIS_1	OUT_DIS_2	OUT_DIS_3	FAST_SW	RSVD		DIS_AGC

Register 0x03 (Port A Input Settings) R/W							
Bit 7	Bit 6	Bit 5	Bit 4	Bit 3	Bit 2	Bit 1	Bit 0
INOFF	RSVD	RSVD	RSVD	EQ3	EQ2	EQ1	EQ0

Register 0x04 (Port A Output Settings) R/W							
Bit 7	Bit 6	Bit 5	Bit 4	Bit 3	Bit 2	Bit 1	Bit 0
		VOD1	VOD0			GAIN1	GAIN0

Register 0x06 (Port B Control Settings) R/W							
Bit 7	Bit 6	Bit 5	Bit 4	Bit 3	Bit 2	Bit 1	Bit 0
OUT_DIS_0	OUT_DIS_1	OUT_DIS_2	OUT_DIS_3	FAST_SW	RSVD		DIS_AGC

Register 0x07 (Port B Input Settings) R/W							
Bit 7	Bit 6	Bit 5	Bit 4	Bit 3	Bit 2	Bit 1	Bit 0
INOFF	RSVD	RSVD	RSVD	EQ3	EQ2	EQ1	EQ0

Register 0x08 (Port B Output Settings) R/W							
Bit 7	Bit 6	Bit 5	Bit 4	Bit 3	Bit 2	Bit 1	Bit 0
		VOD1	VOD0			GAIN1	GAIN0

Register 0x0A (Port C Control Settings) R/W							
Bit 7	Bit 6	Bit 5	Bit 4	Bit 3	Bit 2	Bit 1	Bit 0
OUT_DIS_0	OUT_DIS_1	OUT_DIS_2	OUT_DIS_3	FAST_SW	RSVD		DIS_AGC

Register 0x0B (Port C Input Settings) R/W							
Bit 7	Bit 6	Bit 5	Bit 4	Bit 3	Bit 2	Bit 1	Bit 0
INOFF	RSVD	RSVD	RSVD	EQ3	EQ2	EQ1	EQ0

Register 0x0C (Port C Output Settings) R/W							
Bit 7	Bit 6	Bit 5	Bit 4	Bit 3	Bit 2	Bit 1	Bit 0
		VOD1	VOD0			GAIN1	GAIN0

Register 0x0D (Reserved Settings) R/W							
Bit 7	Bit 6	Bit 5	Bit 4	Bit 3	Bit 2	Bit 1	Bit 0
RSVD	RSVD	RSVD	RSVD	RSVD	RSVD	RSVD	RSVD

Register 0x0F (Reserved Settings) Read Only							
Bit 7	Bit 6	Bit 5	Bit 4	Bit 3	Bit 2	Bit 1	Bit 0
RSVD	RSVD	RSVD	RSVD	RSVD	RSVD	RSVD	RSVD

Register 0x10 (Polarity Control Settings for Port A and B) R/W							
Bit 7	Bit 6	Bit 5	Bit 4	Bit 3	Bit 2	Bit 1	Bit 0
POL_B[3]	POL_B[2]	POL_B[1]	POL_B[0]	POL_A[3]	POL_A[2]	POL_A[1]	POL_A[0]

Register 0x11 (Polarity Control Settings for Port C) R/W							
Bit 7	Bit 6	Bit 5	Bit 4	Bit 3	Bit 2	Bit 1	Bit 0
				POL_C[3]	POL_C[2]	POL_C[1]	POL_C[0]

Register 0x12 (Lane Enable) R/W							
Bit 7	Bit 6	Bit 5	Bit 4	Bit 3	Bit 2	Bit 1	Bit 0
				LN_EN[3]	LN_EN[2]	LN_EN[1]	LN_EN[0]

SN65LVCP114

SLLSEA8 –JANUARY 2012

www.ti.com
Table 5. SN65LVCP114 Register Descriptions

REGISTER	BIT	SYMBOL	FUNCTION	DEFAULT
0x00	7	SW_GPIO	Switching logic is controlled by GPIO or I ² C: 1 = GPIO control 0 = I ² C control	00000000
	6	PWRDOWN	Power down the device: 0 = Normal operation 1 = Power down	
	5			
	4			
	3			
	2			
	1			
	0	RSVD	For TI use only	
0x01	7	DIAG	Enables Diag Mode: 0 = Disable 1 = Enable	00000000
	6	LOOP[C]	Enables port C loopback: 0 = Disable 1 = Enable	
	5	LOOP[B]	Enables port B loopback: 0 = Disable 1 = Enable	
	4	LOOP[A]	Enables port A loopback: 0 = Disable 1 = Enable	
	3	SEL[3]	Lane 3, port A/port B switch control: 0 = Port A selected 1 = Port B selected	
	2	SEL[2]	Lane 2, port A/port B switch control: 0 = Port A selected 1 = Port B selected	
	1	SEL[1]	Lane 1, port A/port B switch control: 0 = Port A selected 1 = Port B selected	
	0	SEL[0]	Lane 0, port A/port B switch control: 0 = Port A selected 1 = Port B selected	

Table 5. SN65LVCP114 Register Descriptions (continued)

REGISTER	BIT	SYMBOL	FUNCTION							DEFAULT
0x02 0x06 0x0A	7	OUT_DIS0	Disables output lane 0: 0 = Enable 1 = Disable							00001100
	6	OUT_DIS1	Disables output lane 1: 0 = Enable 1 = Disable							
	5	OUT_DIS2	Disables output lane 2: 0 = Enable 1 = Disable							
	4	OUT_DIS3	Disables output lane 3: 0 = Enable 1 = Disable							
	3	FAST_SW	Fast switch: 0 = Idle outputs are disabled (save power) 1 = Idle outputs are squelched (fast switch time)							
	2	RSVD	For TI use only							
	1									
	0	DIS_AGC	AGC loop: 0 = Enable 1 = Disable							
0x03 0x07 0x0B	7	IN_OFF	Power down input stages: 0 = Normal 1 = Power down							00000000
	6	RSVD	For TI use only							
	5	RSVD	For TI use only							
	4	RSVD	For TI use only							
	3	EQ3		EQ3	EQ2	EQ1	EQ0	Peaking in dB		
	2	EQ2		0	x	x	x	1.3		
	1	EQ1		1	0	0	0	2		
				1	0	0	1	3.6		
				1	0	1	0	5		
				1	0	1	1	6.5		
				1	1	0	0	8.3		
				1	1	0	1	10		
				1	1	1	0	11.9		
0	EQ0	1	1	1	1	13.9				
0x04 0x08 0x0C	7									00000000
	6									
	5	VOD1	VOD control [VOD1:VOD0]: 00 = 1200 mV maximum 01 = 600 mV maximum 10 = 1200 mV maximum 11 = 1200 mV maximum							
	4	VOD0								
	3									
	2									
	1	GAIN1	GAIN control [GAIN1:GAIN0]: 00 = 0.5 01 = 1 10 = 0.5 11 = 1							
	0	GAIN0								

SN65LVCP114

SLLSEA8 –JANUARY 2012

www.ti.com
Table 5. SN65LVCP114 Register Descriptions (continued)

REGISTER	BIT	SYMBOL	FUNCTION	DEFAULT
0x05 0x09 0x0E	7			00000000
	6			
	5			
	4			
	3			
	2			
	1			
	0			
0x0D	7	RSVD	For TI use only	00000000
	6	RSVD	For TI use only	
	5	RSVD	For TI use only	
	4	RSVD	For TI use only	
	3	RSVD	For TI use only	
	2	RSVD	For TI use only	
	1	RSVD	For TI use only	
	0	RSVD	For TI use only	
0x0F	7	RSVD	For TI use only	00010001
	6	RSVD	For TI use only	
	5	RSVD	For TI use only	
	4	RSVD	For TI use only	
	3	RSVD	For TI use only	
	2	RSVD	For TI use only	
	1	RSVD	For TI use only	
	0	RSVD	For TI use only	
0x10	7	POL_B[3]	Polarity switch of output lane 3 of port B: 0 = Normal 1 = Switched	00000000
	6	POL_B[2]	Polarity switch of output lane 2 of port B: 0 = Normal 1 = Switched	
	5	POL_B[1]	Polarity switch of output lane 1 of port B: 0 = Normal 1 = Switched	
	4	POL_B[0]	Polarity switch of output lane 0 of port B: 0 = Normal 1 = Switched	
	3	POL_A[3]	Polarity switch of output lane 3 of port A: 0 = Normal 1 = Switched	
	2	POL_A[2]	Polarity switch of output lane 2 of port A: 0 = Normal 1 = Switched	
	1	POL_A[1]	Polarity switch of output lane 1 of port A: 0 = Normal 1 = Switched	
	0	POL_A[0]	Polarity switch of output lane 0 of port A: 0 = Normal 1 = Switched	

Table 5. SN65LVCP114 Register Descriptions (continued)

REGISTER	BIT	SYMBOL	FUNCTION	DEFAULT
0x11	7			00000000
	6			
	5			
	4			
	3	POL_C[3]	Polarity switch of output lane 3 of port C: 0 = Normal 1 = Switched	
	2	POL_C[2]	Polarity switch of output lane 2 of port C: 0 = Normal 1 = Switched	
	1	POL_C[1]	Polarity switch of output lane 1 of port C: 0 = Normal 1 = Switched	
	0	POL_C[0]	Polarity switch of output lane 0 of port C: 0 = Normal 1 = Switched	
0x12	7			00001111
	6			
	5			
	4			
	3	LN_EN_3	Lane 3 of ports A, B, and C: 0 = Disable 1 = Enable	
	2	LN_EN_2	Lane 2 of ports A, B, and C: 0 = Disable 1 = Enable	
	1	LN_EN_1	Lane 1 of ports A, B, and C: 0 = Disable 1 = Enable	
	0	LN_EN_0	Lane 0 of ports A, B, and C: 0 = Disable 1 = Enable	

PACKAGING INFORMATION

Orderable Device	Status ⁽¹⁾	Package Type	Package Drawing	Pins	Package Qty	Eco Plan ⁽²⁾	Lead/ Ball Finish	MSL Peak Temp ⁽³⁾	Samples (Requires Login)
SN65LVCP114ZJA	ACTIVE	NFBGA	ZJA	167	189	Green (RoHS & no Sb/Br)	SNAGCU	Level-3-260C-168 HR	

⁽¹⁾ The marketing status values are defined as follows:

ACTIVE: Product device recommended for new designs.

LIFEBUY: TI has announced that the device will be discontinued, and a lifetime-buy period is in effect.

NRND: Not recommended for new designs. Device is in production to support existing customers, but TI does not recommend using this part in a new design.

PREVIEW: Device has been announced but is not in production. Samples may or may not be available.

OBSOLETE: TI has discontinued the production of the device.

⁽²⁾ Eco Plan - The planned eco-friendly classification: Pb-Free (RoHS), Pb-Free (RoHS Exempt), or Green (RoHS & no Sb/Br) - please check <http://www.ti.com/productcontent> for the latest availability information and additional product content details.

TBD: The Pb-Free/Green conversion plan has not been defined.

Pb-Free (RoHS): TI's terms "Lead-Free" or "Pb-Free" mean semiconductor products that are compatible with the current RoHS requirements for all 6 substances, including the requirement that lead not exceed 0.1% by weight in homogeneous materials. Where designed to be soldered at high temperatures, TI Pb-Free products are suitable for use in specified lead-free processes.

Pb-Free (RoHS Exempt): This component has a RoHS exemption for either 1) lead-based flip-chip solder bumps used between the die and package, or 2) lead-based die adhesive used between the die and leadframe. The component is otherwise considered Pb-Free (RoHS compatible) as defined above.

Green (RoHS & no Sb/Br): TI defines "Green" to mean Pb-Free (RoHS compatible), and free of Bromine (Br) and Antimony (Sb) based flame retardants (Br or Sb do not exceed 0.1% by weight in homogeneous material)

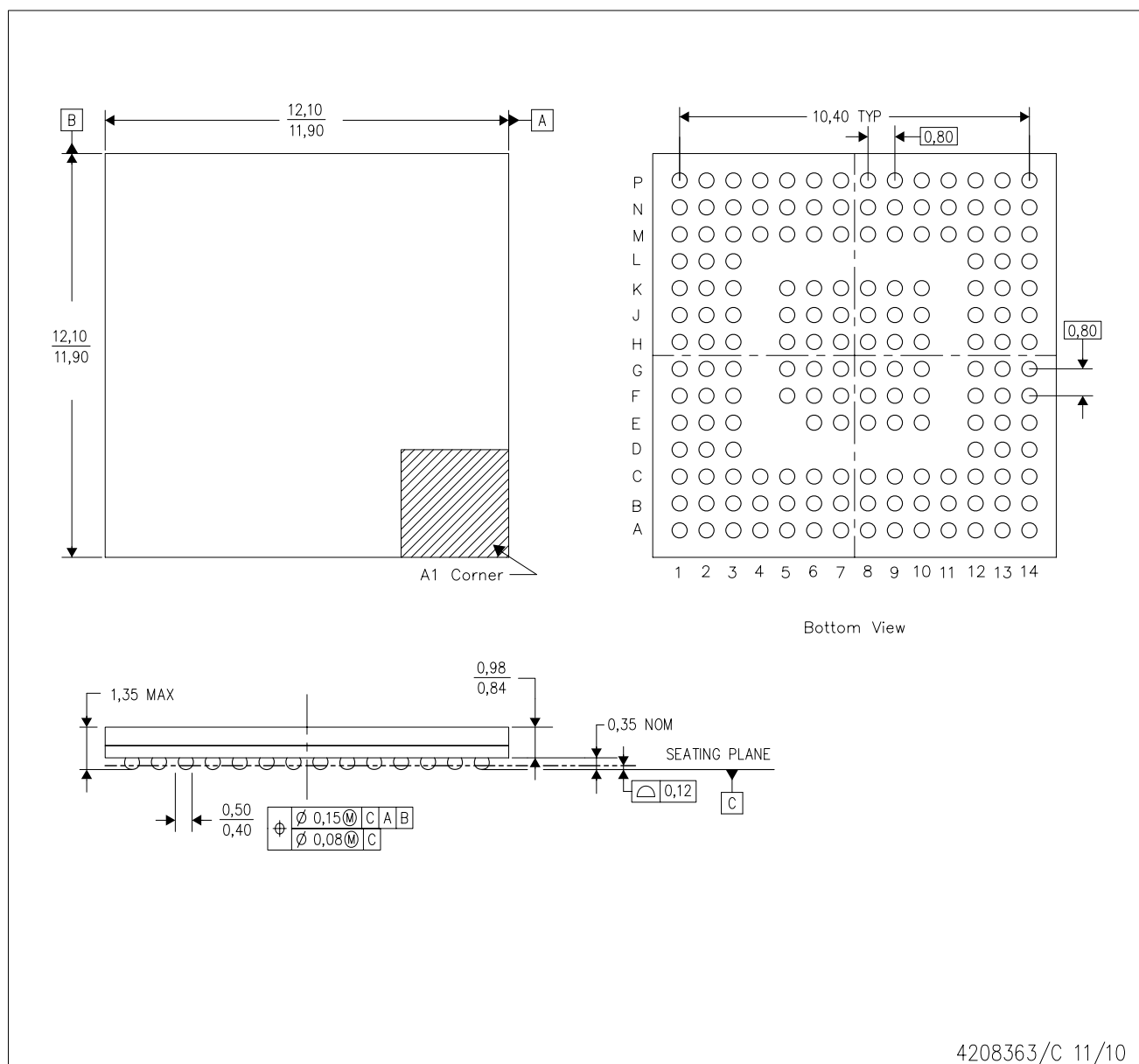
⁽³⁾ MSL, Peak Temp. -- The Moisture Sensitivity Level rating according to the JEDEC industry standard classifications, and peak solder temperature.

Important Information and Disclaimer: The information provided on this page represents TI's knowledge and belief as of the date that it is provided. TI bases its knowledge and belief on information provided by third parties, and makes no representation or warranty as to the accuracy of such information. Efforts are underway to better integrate information from third parties. TI has taken and continues to take reasonable steps to provide representative and accurate information but may not have conducted destructive testing or chemical analysis on incoming materials and chemicals. TI and TI suppliers consider certain information to be proprietary, and thus CAS numbers and other limited information may not be available for release.

In no event shall TI's liability arising out of such information exceed the total purchase price of the TI part(s) at issue in this document sold by TI to Customer on an annual basis.

ZJA (S-PBGA-N167)

PLASTIC BALL GRID ARRAY



- NOTES:
- A. All linear dimensions are in millimeters. Dimensioning and tolerancing per ASME Y14.5M-1994.
 - B. This drawing is subject to change without notice.
 - C. This is a Pb-free solder ball design.

IMPORTANT NOTICE

Texas Instruments Incorporated and its subsidiaries (TI) reserve the right to make corrections, modifications, enhancements, improvements, and other changes to its products and services at any time and to discontinue any product or service without notice. Customers should obtain the latest relevant information before placing orders and should verify that such information is current and complete. All products are sold subject to TI's terms and conditions of sale supplied at the time of order acknowledgment.

TI warrants performance of its hardware products to the specifications applicable at the time of sale in accordance with TI's standard warranty. Testing and other quality control techniques are used to the extent TI deems necessary to support this warranty. Except where mandated by government requirements, testing of all parameters of each product is not necessarily performed.

TI assumes no liability for applications assistance or customer product design. Customers are responsible for their products and applications using TI components. To minimize the risks associated with customer products and applications, customers should provide adequate design and operating safeguards.

TI does not warrant or represent that any license, either express or implied, is granted under any TI patent right, copyright, mask work right, or other TI intellectual property right relating to any combination, machine, or process in which TI products or services are used. Information published by TI regarding third-party products or services does not constitute a license from TI to use such products or services or a warranty or endorsement thereof. Use of such information may require a license from a third party under the patents or other intellectual property of the third party, or a license from TI under the patents or other intellectual property of TI.

Reproduction of TI information in TI data books or data sheets is permissible only if reproduction is without alteration and is accompanied by all associated warranties, conditions, limitations, and notices. Reproduction of this information with alteration is an unfair and deceptive business practice. TI is not responsible or liable for such altered documentation. Information of third parties may be subject to additional restrictions.

Resale of TI products or services with statements different from or beyond the parameters stated by TI for that product or service voids all express and any implied warranties for the associated TI product or service and is an unfair and deceptive business practice. TI is not responsible or liable for any such statements.

TI products are not authorized for use in safety-critical applications (such as life support) where a failure of the TI product would reasonably be expected to cause severe personal injury or death, unless officers of the parties have executed an agreement specifically governing such use. Buyers represent that they have all necessary expertise in the safety and regulatory ramifications of their applications, and acknowledge and agree that they are solely responsible for all legal, regulatory and safety-related requirements concerning their products and any use of TI products in such safety-critical applications, notwithstanding any applications-related information or support that may be provided by TI. Further, Buyers must fully indemnify TI and its representatives against any damages arising out of the use of TI products in such safety-critical applications.

TI products are neither designed nor intended for use in military/aerospace applications or environments unless the TI products are specifically designated by TI as military-grade or "enhanced plastic." Only products designated by TI as military-grade meet military specifications. Buyers acknowledge and agree that any such use of TI products which TI has not designated as military-grade is solely at the Buyer's risk, and that they are solely responsible for compliance with all legal and regulatory requirements in connection with such use.

TI products are neither designed nor intended for use in automotive applications or environments unless the specific TI products are designated by TI as compliant with ISO/TS 16949 requirements. Buyers acknowledge and agree that, if they use any non-designated products in automotive applications, TI will not be responsible for any failure to meet such requirements.

Following are URLs where you can obtain information on other Texas Instruments products and application solutions:

Products

Audio	www.ti.com/audio
Amplifiers	amplifier.ti.com
Data Converters	dataconverter.ti.com
DLP® Products	www.dlp.com
DSP	dsp.ti.com
Clocks and Timers	www.ti.com/clocks
Interface	interface.ti.com
Logic	logic.ti.com
Power Mgmt	power.ti.com
Microcontrollers	microcontroller.ti.com
RFID	www.ti-rfid.com
OMAP Mobile Processors	www.ti.com/omap
Wireless Connectivity	www.ti.com/wirelessconnectivity

Applications

Automotive and Transportation	www.ti.com/automotive
Communications and Telecom	www.ti.com/communications
Computers and Peripherals	www.ti.com/computers
Consumer Electronics	www.ti.com/consumer-apps
Energy and Lighting	www.ti.com/energy
Industrial	www.ti.com/industrial
Medical	www.ti.com/medical
Security	www.ti.com/security
Space, Avionics and Defense	www.ti.com/space-avionics-defense
Video and Imaging	www.ti.com/video

TI E2E Community Home Page

e2e.ti.com

Mailing Address: Texas Instruments, Post Office Box 655303, Dallas, Texas 75265
Copyright © 2012, Texas Instruments Incorporated