



SAW Components

Data Sheet B9006

Data Sheet

An abstract, grayscale graphic featuring a globe with a grid pattern, overlaid with a large, stylized, and slightly blurred "EPCOS" logo. The logo is rendered in a light gray, almost white, color, giving it a three-dimensional appearance as if it's floating or attached to the globe. The background is dark and textured, with some light streaks and a sense of motion or depth.

EPCOS



SAW Components

B9006

Low-Loss Filter for Mobile Communication

881,5 MHz

Data Sheet



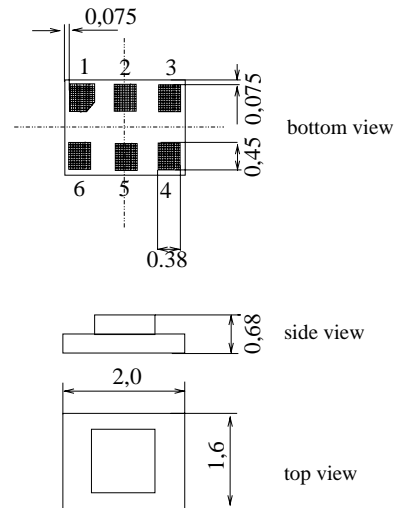
Chip sized SAW package DCS6Q

Features

- Low-loss RF filter for mobile telephone GSM850/AMPS system, receive path
- Usable passband 25 MHz
- Unbalanced to balanced operation
- Impedance transformation from 50 Ω to 200 Ω
- Suitable for GPRS class 1 to 12
- Ceramic package for **Surface Mounted Technology (SMT)**

Terminals

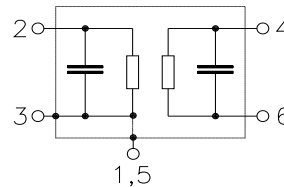
- Ni, gold-plated



Dimensions in mm, approx. weight 0,006g

Pin configuration

- 2 Unbalanced input
- 4, 6 Balanced output
- 1, 3, 5 To be grounded



Type	Ordering code	Marking and Package according to	Packing according to
B9006	B39881-B9006-E710	C61157-Z7-C208	F61074-V8152-Z000

Electrostatic Sensitive Device (ESD)

Maximum ratings

Operable temperature range	T	- 30 / + 85	$^{\circ}\text{C}$	
Storage temperature range	T_{stg}	- 40 / + 85	$^{\circ}\text{C}$	
DC voltage	V_{DC}	5	V	
ESD	V_{ESD}	100	V	(machine model)
		250	V	(human body model)
Input power at GSM850, GSM900, GSM1800 and GSM1900 Tx bands	P_{IN}	15	dBm	peak power of GSM signal, duty cycle 4:8



SAW Components

B9006

Low-Loss Filter for Mobile Communication

881,5 MHz

Data Sheet



Characteristics

Operating temperature range: $T = -30$ to $+85$ °C
Terminating source impedance: $Z_S = 50 \Omega$ (unbalanced)
Terminating load impedance: $Z_L = 200 \Omega$ (balanced)

		min.	typ.	max.	
Center frequency	f_C	—	881,5	—	MHz
Maximum insertion attenuation	α_{\max}				
869,0 ... 894,0 MHz		—	1,9	2,4	dB
Amplitude ripple (p-p)	$\Delta\alpha$				
869,0 ... 894,0 MHz		—	0,6	1,1	dB
Input return loss					
869,0 ... 894,0 MHz		12,0	13,0	—	dB
Output return loss					
869,0 ... 894,0 MHz		12,0	14,0	—	dB
Output phase balance ($\phi(S_{31}) - \phi(S_{21}) + 180^\circ$)					
869,0 ... 894,0 MHz		-10	0	10	degree
Output amplitude balance ($ S_{31}/S_{21} $)					
869,0 ... 894,0 MHz		-1,0	0	1,0	dB
Attenuation	α				
0,0 ... 824,0 MHz		45	68	—	dB
824,0 ... 849,0 MHz		40	44	—	dB
914,0 ... 950,0 MHz		20	25	—	dB
950,0 ... 6000,0 MHz		40	60	—	dB



SAW Components

B9006

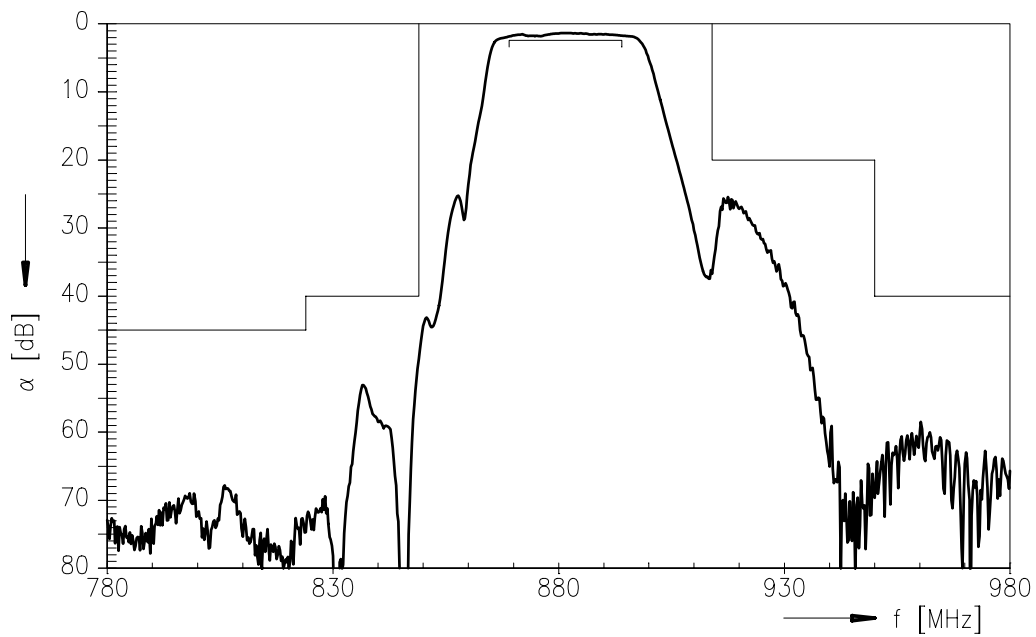
Low-Loss Filter for Mobile Communication

881,5 MHz

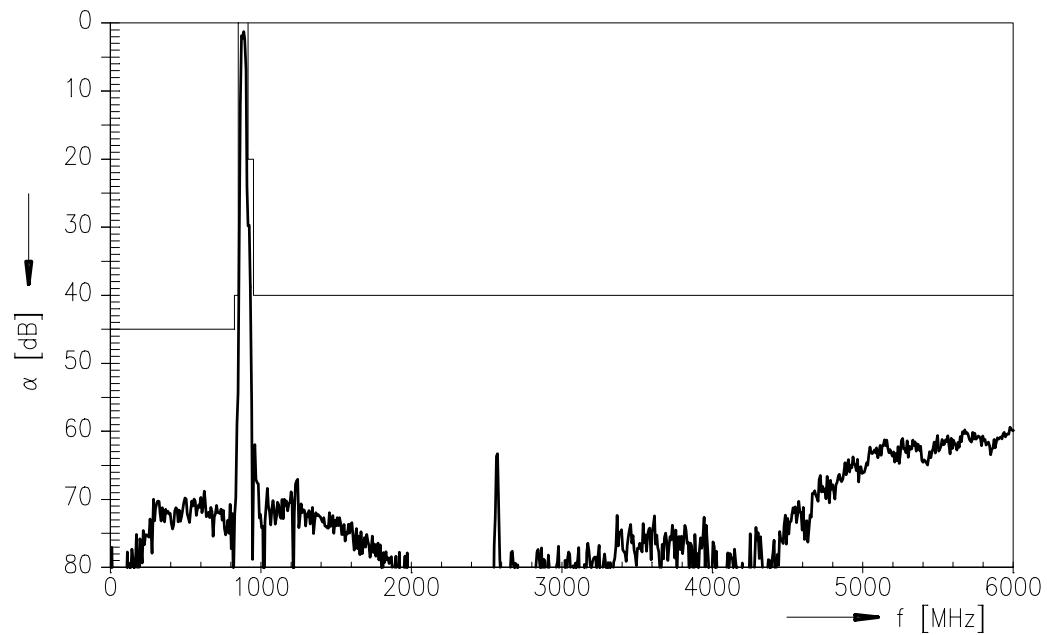
Data Sheet



Transfer function (narrowband; 50 Ω to 200 Ω operation)



Transfer function (wideband; 50 Ω to 200 Ω operation)





SAW Components

B9006

Low-Loss Filter for Mobile Communication

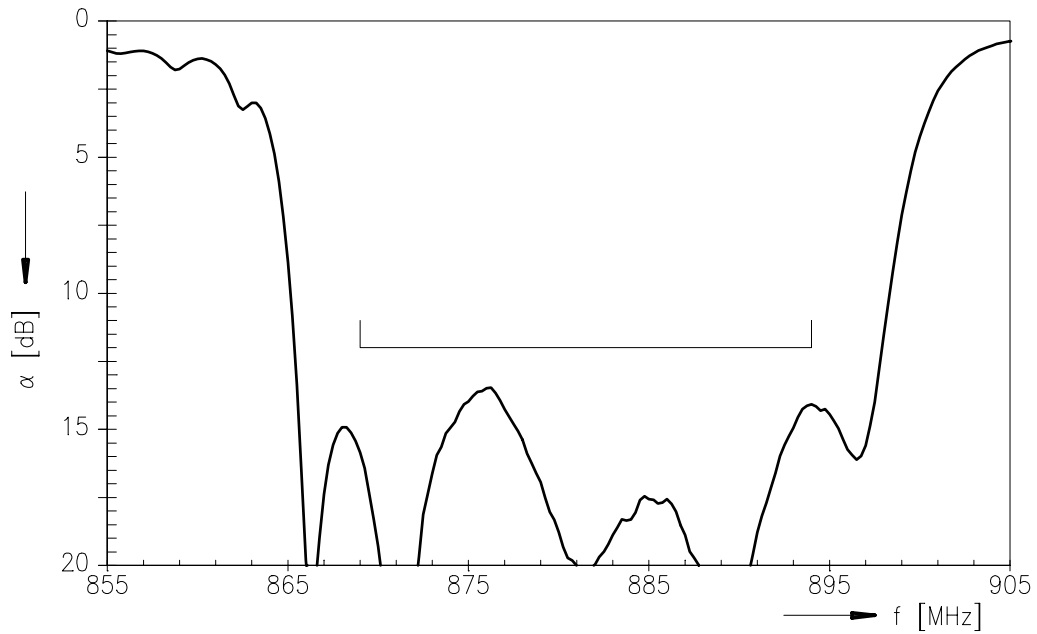
881,5 MHz

Data Sheet

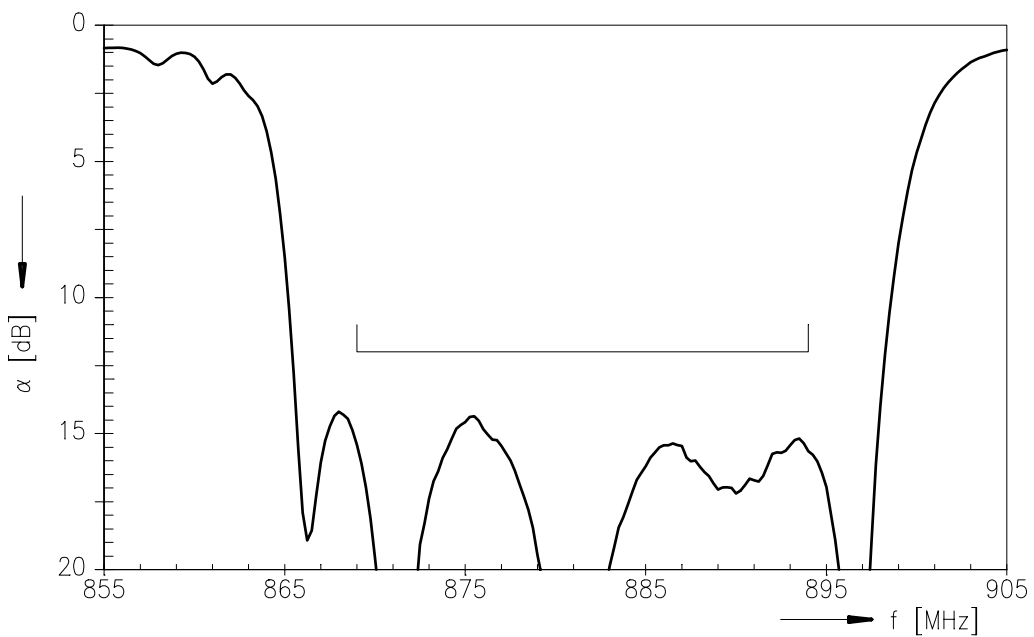


Matching (measurement; 50 Ω to 200 Ω operation)

Input return loss



Output return loss





SAW Components

B9006

Low-Loss Filter for Mobile Communication

881,5 MHz

Data Sheet



Published by EPCOS AG

Surface Acoustic Wave Components Division, SAW MC WT

P.O. Box 80 17 09, 81617 Munich, GERMANY

© EPCOS AG 2002. Reproduction, publication and dissemination of this brochure and the information contained therein without EPCOS' prior express consent is prohibited.

Purchase orders are subject to the General Conditions for the Supply of Products and Services of the Electrical and Electronics Industry recommended by the ZVEI (German Electrical and Electronic Manufacturers' Association), unless otherwise agreed.

This brochure replaces the previous edition.

For questions on technology, prices and delivery please contact the Sales Offices of EPCOS AG or the international Representatives.

Due to technical requirements components may contain dangerous substances. For information on the type in question please also contact one of our Sales Offices.