

C&K C Series Power Rocker Switches



Features/Benefits

- Positive detent
- Attractive design
- Snap-in mounting

Typical Applications

- Floor care products
- Power outlet strips
- Small appliances
- RoHS compliant



Specifications

CONTACT RATING: All Models: 15 AMPS @ 125 V AC; 10 AMPS @ 250 V AC . Models also available with see rating section.

ELECTRICAL LIFE: 10,000 make-and-break cycles at full load.

INSULATION RESISTANCE: $10^9 \Omega$ min.

DIELECTRIC STRENGTH: 2,500 Vrms min. @ sea level.

NOTE: For the latest information regarding RoHS compliance, please go to: www.ittcannon.com/rohs.

NOTE: Specifications and materials listed above are for switches with standard options. For information on specific and custom switches, consult Customer Service center.

Materials

HOUSING & ACTUATOR: 6/6 nylon (UL 94V-2), black (standard).

MOVABLE CONTACTS: Copper, silver plated.

STATIONARY CONTACT & TERMINALS:

C121, C122 models with 'QA' rating: Copper, silver plated.

C221, C222 models with 'QA' rating: Copper.

All models with 'QF' rating: Copper, silver plated.

CONTACT SPRING: Music wire or stainless steel.

OPERATING TEMPERATURE: -30°C to +65°C

Build-A-Switch

To order, simply select desired option from each category and place in the appropriate box. Available options are shown and described on pages H-103 and H-105. For additional options not shown in catalog, consult Customer Service Center.

<div>Switch Function</div> <div>C121 SPDT, On-On</div> <div>C122 SPST, On-Off</div> <div>C221 DPDT, On-On</div> <div>C222 DPST, On-Off</div>	<div>Actuator</div> <div>J1 Rocker</div> <div>Actuator Color</div> <div>2 Black</div> <div>1 White</div> <div>3 Red</div> <div>Mounting Style/Color</div> <div>S2 Snap-in, black</div> <div>S1 Snap-in, white</div> <div>Terminations</div> <div>05 Quick connect</div> <div>WC Wire Wrap</div> <div>Actuator Markings</div> <div>NONE No markings</div> <div>D ON-OFF</div> <div>P 0 -</div> <div>Contact Material</div> <div>QA Silver (UL/CSA)</div> <div>QF Silver (UL/CSA/VDE)</div>
--	---

Rocker



Dimensions are shown: Inch (mm)
Specifications and dimensions subject to change

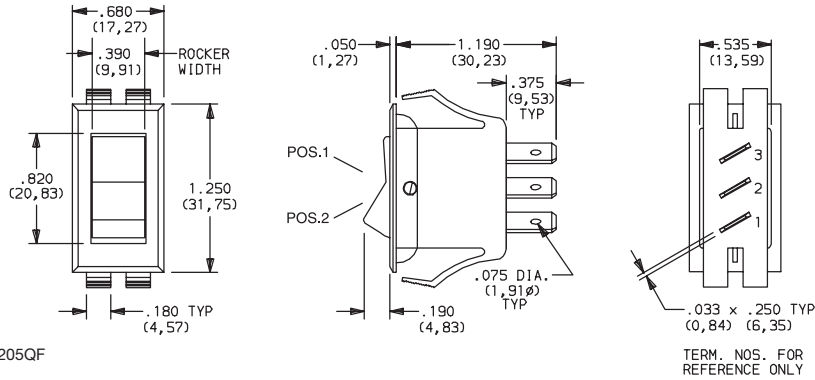
C&K C Series Power Rocker Switches

SWITCH FUNCTION



NO. POLES	MODEL NO.	SWITCH FUNCTION		CONNECTED TERMINALS		SCHEMATIC	
		POS. 1	POS. 2	POS. 1	POS. 2		
SP	C121	ON	ON	2-1 1-1A	2-3 1-1B	SPDT	SPDT
	C122	ON	OFF	2-1 1-1A	OPEN	SPST	SPST
DP	C221	ON	ON	1-1A, 2-2A	1-1B, 2-2B	DPDT	DPDT
	C222	ON	OFF	1-1A, 2-2A	OPEN	DPST	DPST

SPDT

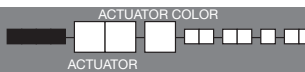


All models with all options.

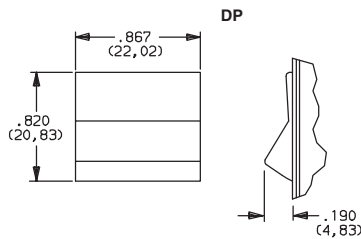
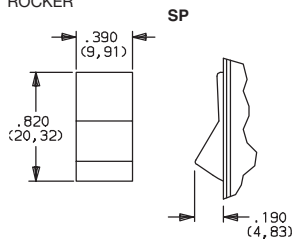
Only models with 'QF' rating meet international dimensional and electrical requirements .

Contacts make on side opposite actuator thrown.

ACTUATOR



J1 ROCKER



OPTION CODE	ACTUATOR COLOR
2	BLACK
1	WHITE
3	RED

NOTE: Actuator finish: gloss (standard).
Other colors available, consult Customer Service Center.

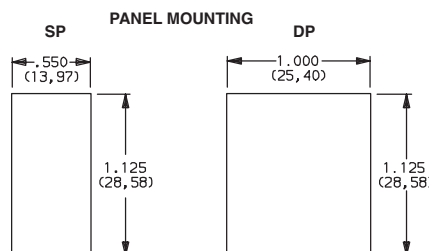
MOUNTING STYLE/COLOR



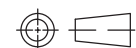
S1, S2 SNAP-IN

OPTION CODE	HOUSING COLOR
S2	BLACK
S1	WHITE

NOTE: Frame finish on housing: gloss (standard).
Other colors available, consult Customer Service Center.



PANEL THICKNESS:
.020 (0,51) TO .200 (5,08)



Third Angle Projection

Dimensions are shown: Inch (mm)

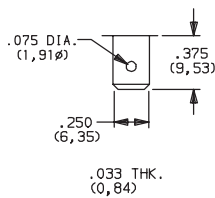
Specifications and dimensions subject to change



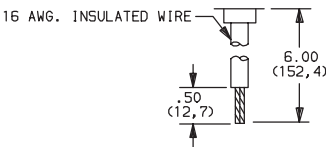
C&K C Series Power Rocker Switches

TERMINATIONS

05 QUICK CONNECT



WC WIRE WRAP



Available with 'QA' contact material only,
(only) SP models only.
Black wire standard, other colors and
lengths available, consult Customer
Service Center. UL style 1015.

ACTUATOR MARKINGS

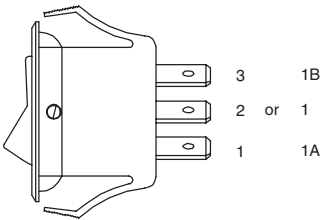
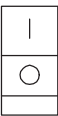
NONE NO MARKING



D ON-OFF



P O -



NOTE: Orientation of actuator
markings and terminals.

'D, H, K & P' marking options: marking color white, standard for all actuator colors except white.
Black, standard for white actuators. Consult Customer Service Center for other available markings and colors.

CONTACT MATERIAL

OPTION CODE	RoHS COMPLIANT *	RoHS COMPATIBLE *	CONTACT AND TERMINAL MATERIAL	RATINGS	
				POWER	
QA	YES	YES	SILVER 1,2		15 AMPS @ 125 V AC; 10 AMPS @ 250 V AC (UL/CSA).
QF	YES	YES			15 AMPS @ 125 V AC; 10 AMPS @ 250 V AC (UL/CSA/VDE).

* Note: See Technical Data section of this catalog for RoHS compliant and compatible definitions and specifications.

- ¹ STATIONARY CONTACT & TERMINALS:
All models with 'QA' rating: Copper, silver plated.
All models with 'QF' rating: Copper, silver top lay.
² MOVABLE CONTACTS: Copper, silver plated.

NOTE: 'QF' rating available with '05' terminations only.

NOTE: For the latest information regarding RoHS compliance, please go to:
www.ittcannon.com/rohs.

All models .
Only models with 'QF' rating meet international dimensional
and electrical requirements .

Rocker



H



ITT



Dimensions are shown: Inch (mm)
Specifications and dimensions subject to change

www.ittcannon.com