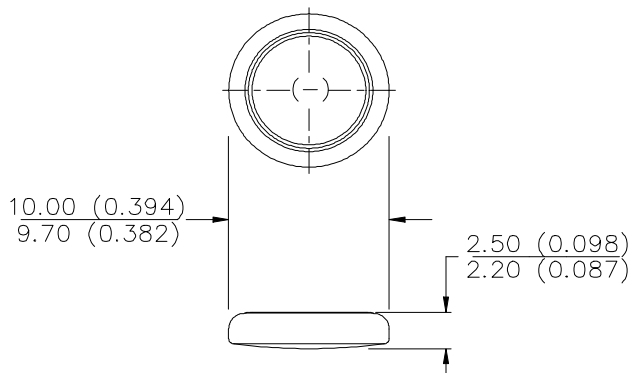


ENERGIZER NO. CR1025



Industry Standard Dimensions in mm (inches)



Chemical System: Lithium / Manganese Dioxide (Li/MnO₂)

Designation: IEC-CR1025

Battery Voltage: 3.0 Volts

Average Weight: 0.7 grams (0.02 oz.)

Volume: 0.2 cubic centimeters (0.01 cubic inch)

Average Capacity: 30 mAh to 2.0 volts
(Rated at 45k ohms continuous at 21°C)

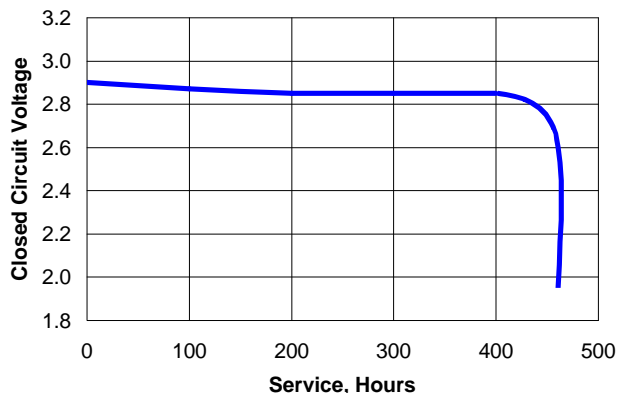
Maximum Reverse

Charge Current: 1 microampere

Energy Density: 124 milliwatt hr/g, 435 milliwatt hr/cc

TYPICAL DISCHARGE CURVE

Simulated Test @ 21°C (70°F)



Simulated Application Test
Estimated Average Service at 21°C (70°F)

Schedule:	Typical Drains at 2.9V (microamperes)	Load (ohms)	Cutoff Voltage
			2.0V
24 hours/day	64	45,000	467 Hours

Important Notice

This data sheet contains information specific to batteries manufactured at the time of its publication.

Contents herein do not constitute a warranty.

Copyright © Eveready Battery Co. Inc. - All Rights Reserved