

# PM Series

## 5 Tumbler Miniature Snap-in Switchlocks

### Features/Benefits

- International agency listings
- Snap-in mounting
- Wire lead terminations available
- 5 Tumbler lock with positive detent

### Typical Applications

- Computers
- Point-of-sale terminals
- Marine equipment



Models Available

### Specifications

**CONTACT RATING:** Q contact material: 4 AMPS @ 125 V AC or 28 V DC; 2 AMPS @ 250 V AC (UL/CSA); 4 AMPS @ 125 V AC, 2 AMPS @ 250 V AC, T65 (VDE). See page M-33 for additional ratings.

**ELECTRICAL LIFE:** 10,000 make-and-break cycles at full load.

**CONTACT RESISTANCE:** Below 10 m  $\Omega$  typ. initial @ 2-4 V DC, 100 mA, for both silver and gold plated contacts.

**INSULATION RESISTANCE:** 10<sup>9</sup>  $\Omega$  min.

**DIELECTRIC STRENGTH:** 1,000 Vrms min. @ sea level.

**INDEXING:** 90°:2 positions.

### Materials

**LOCK:** 6/6 nylon with matte finish (UL 94V-2), color black, 5 tumbler, single bitted lock with integral detent mechanism.

**KEYS:** Two nickel plated brass keys with black plastic head, other colors available.

**SWITCH HOUSING:** 6/6 nylon (UL 94V-2).

**CONTACTS & TERMINALS:** Q contact material: Copper, silver plated. See page L-33 for additional contact materials.

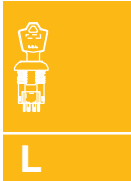
**NOTE:** Any models supplied with Q or B contact material are RoHS compliant.

**NOTE:** Specifications and materials listed above are for switchlocks with standard options. For information on specific and custom switchlocks, consult Customer Service Center.

### Build-A-Switch

To order, simply select desired option from each category and place in the appropriate box. Available options are shown and described on pages L-32 and L-33. For additional options not shown in catalog, consult Customer Service Center.

<div>Switch and lock Function</div> <div>PM0613 SP, 90°, Index, keypull pos. 1</div> <div>PM061U SP, 90° Index, keypull pos. 1 &amp; 3</div>	<div>Keying</div> <div>E Two nickel plated brass keys with insert molded plastic head</div>	<div>Lock Type</div> <div>B 5 Tumbler lock with detent</div>	<div>Lock Finish</div> <div>M Plastic lock with matte finish</div>	<div>Terminations</div> <div>05 Quick connect</div> <div>WC Wire lead</div>	<div>Lock Style</div> <div>K Cone shaped facing</div>	<div>Contact Material</div> <div>Q Silver</div> <div>B Gold</div>	<div>Lock Color</div> <div>2 Black</div>	<div>Key Color</div> <div>2 Black</div>
--	---	--	--	---	---	---	--	---



Switchlock





Dimensions are shown: Inch (mm)  
Specifications and dimensions subject to change

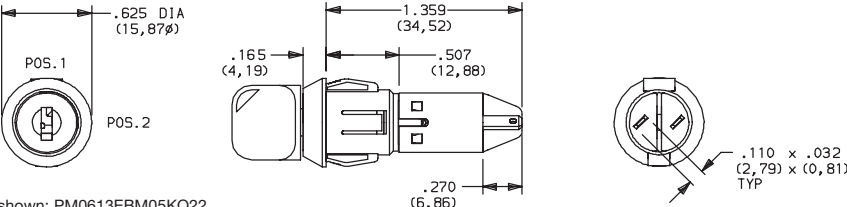
# PM Series

## 5 Tumbler Miniature Snap-in Switchlocks

### SWITCH AND LOCK FUNCTION

NO. POLES	MODEL NO.	SWITCH FUNCTION		KEY PULL POSITIONS	LOCK CONFIGURATION	INDEXING
		POS. 1	POS. 2			
SP	PM0613	OFF	ON	Position 1		90°
	PM061U			Positions 1 & 2		

SP



Part number shown: PM0613EBM05KQ22

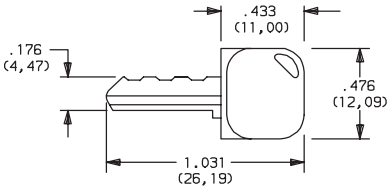
All models with all options when ordered with 'Q' contact material.

#### LEGEND

- = Detent Position (90°)
- ⊙ = Key pull possible in these positions.
- ⦿ = Stop Positions

### KEYING

**E** TWO NICKEL PLATED BRASS KEYS WITH INSERT MOLDED PLASTIC HEAD



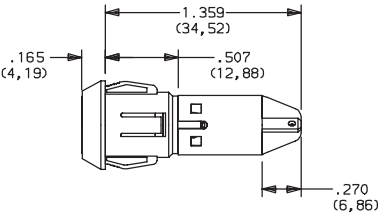
Key part number: 334C1004102

OPTION CODE	KEY COLOR
2	BLACK

**NOTE:** Molded plastic head color is black, standard. For more than one key code, replacement keys, or other special features, consult Customer Service Center.

### LOCK TYPE

**B** 5 TUMBLER LOCK WITH DETENT



OPTION CODE	LOCK COLOR
2	BLACK



Third Angle  
Projection

Dimensions are shown: Inch (mm)  
Specifications and dimensions subject to change

# PM Series

## 5 Tumbler Miniature Snap-in Switchlocks

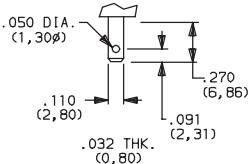
### LOCK FINISH

**M** PLASTIC LOCK WITH MATTE FINISH

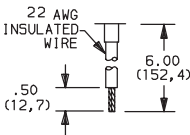


### TERMINATIONS

**05** QUICK CONNECT



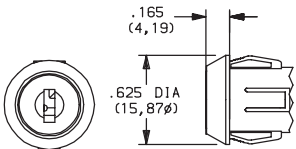
**WC** WIRE LEAD



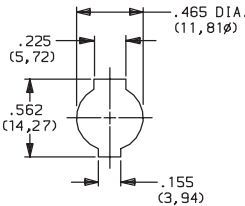
UL style 1015.  
Black wire standard, other colors and lengths available,  
consult Customer Service Center.

### LOCK STYLE

**K** CONE SHAPED FACING



#### PANEL MOUNTING



Panel thickness:  
.050-.080 (1,27-2,03)

### CONTACT MATERIAL

OPTION CODE	RoHS COMPLIANT*	RoHS COMPATIBLE*	CONTACT AND TERMINAL MATERIAL	RATING	
<b>Q</b>	YES	YES	SILVER <sup>2</sup>	POWER	4 AMPS @ 125 V AC or 28 V DC; 2 AMPS @ 250 V AC (UL/CSA). 4 AMPS @ 125 V AC; or 2 AMPS @ 250 V AC; T65 (VDE).
<b>B</b>	YES	YES	GOLD <sup>1</sup>	LOW LEVEL/DRY CIRCUIT	0.4 VA MAX. @ 20 V AC or DC MAX.

\* Note: See Technical Data section of this catalog for RoHS compliant and compatible definitions and specifications.

<sup>1</sup> CONTACTS & TERMINALS: Copper, with gold plate over nickel plate.

<sup>2</sup> CONTACTS & TERMINALS: Copper, silver plated (standard with all termination options).

All models with all options when ordered with 'Q' contact material.



Switchlock

### AVAILABLE HARDWARE

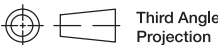


Key Code: 041

**PART NO. (ONE KEY)**

**334C1004102** BLACK

**Material:** Brass  
**Finish:** Nickel plate  
**6/6 Nylon insert molded head**



Dimensions are shown: Inch (mm)  
Specifications and dimensions subject to change

[www.ck-components.com](http://www.ck-components.com)